

428 LONG DRIVE

GREENFORD, UB6 8UH

FOREST
REAL ESTATE

TO LET

64,526 SQ FT

Newly refurbished industrial unit with a private undercroft yard.

Key Features

- Newly Refurbished
- Open Plan Warehouse
- 5 Loading Doors
- Passenger Lift
- On-site Security
- Newly Built Offices
- Undercroft Yard
- 3 Phase Power
- Concrete Flooring
- 18 parking spaces

428 Long Drive
Greenford, UB6 8UH





Description

This newly refurbished warehouse features an open-plan layout, accessible through five loading doors for convenient logistics. Internally, the unit boasts clear eaves heights, concrete flooring, and the added advantage of 3-phase power infrastructure.

The second-floor office spaces are newly constructed, consisting of an open plan layout with ancillary private offices, meeting rooms and boardroom. These offices are equipped with air conditioning for a comfortable working environment, and multiple well-appointed WC facilities enhance convenience.

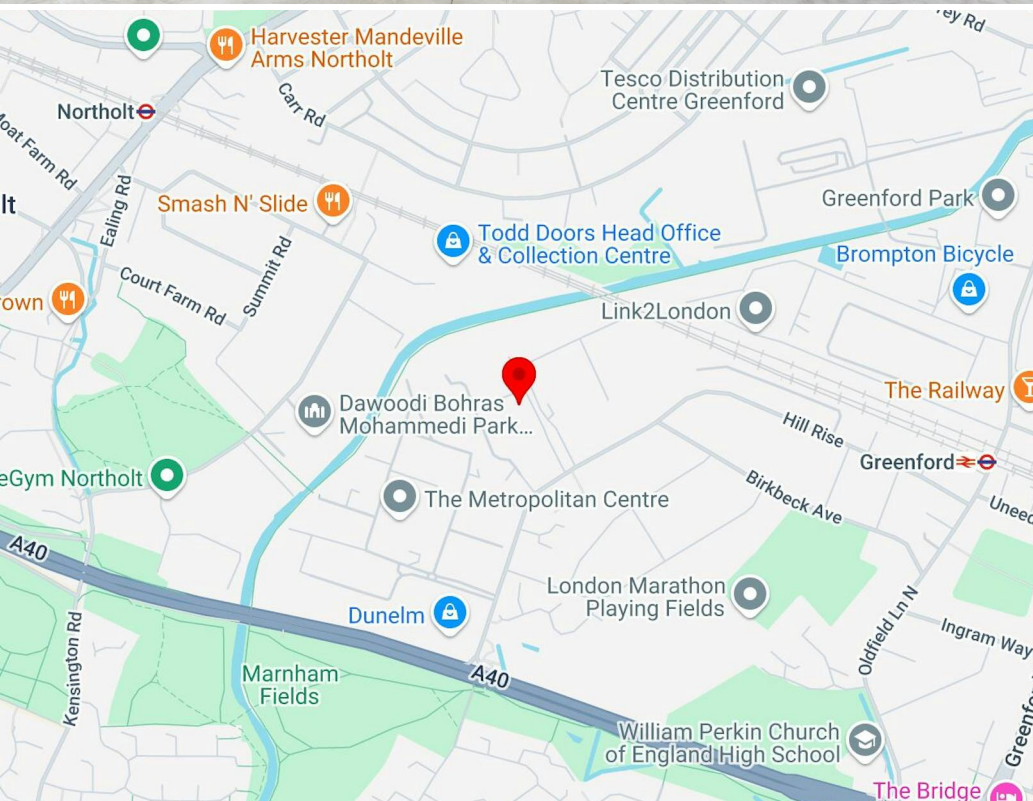
Externally, the property offers a substantial undercroft forecourt designed to facilitate the seamless loading and unloading of artic lorries.

Furthermore, the premises include ample parking space accommodating up to 18 vehicles, ensuring practicality and efficiency for both warehouse and office operations.

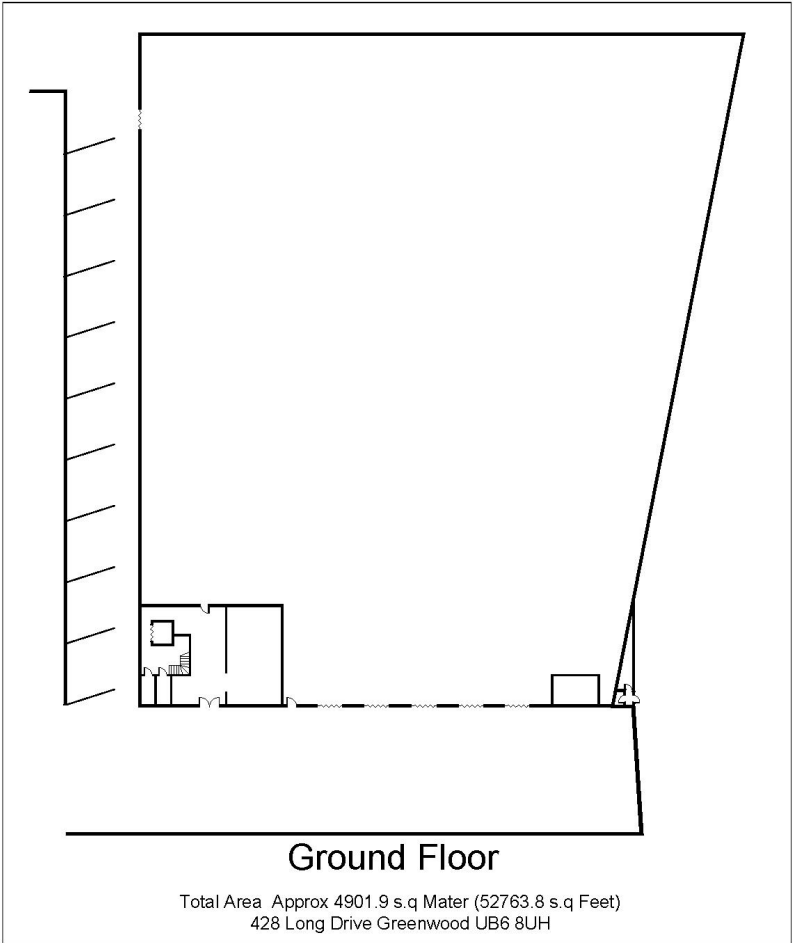
Location

The building is located with direct access to Central London to the East. The estate benefits from excellent access to the A40, providing direct access to the M40 and M25 Motorways to the West.

Greenford Underground Station (Central Line) is within a 15 minute walk.







Availability

The accommodation comprises the following areas:

Name	sq ft	sq m
Ground	52,764	4,901.94
2nd	11,762	1,092.73
Total	64,526	5,994.67
Lease	New Lease	
Rent	£15 per sq ft	
Rates	Tenant to make their own enquiries to the London Borough of Ealing.	
Service Charge	To be confirmed.	
VAT	Applicable	
EPC	On application	

Contact

Cormac Sears

020 3355 1555 | 07788 235 185
cormac@forestrealestate.co.uk

Ethan Shine

020 3355 1555 | 07792 781 096
ethan@forestrealestate.co.uk

London Office Team

55 St John Street, London, EC1M 4AN
020 3370 4470

London Industrial Team

1 Bridge Lane, London, NW11 0EA
020 3355 1555

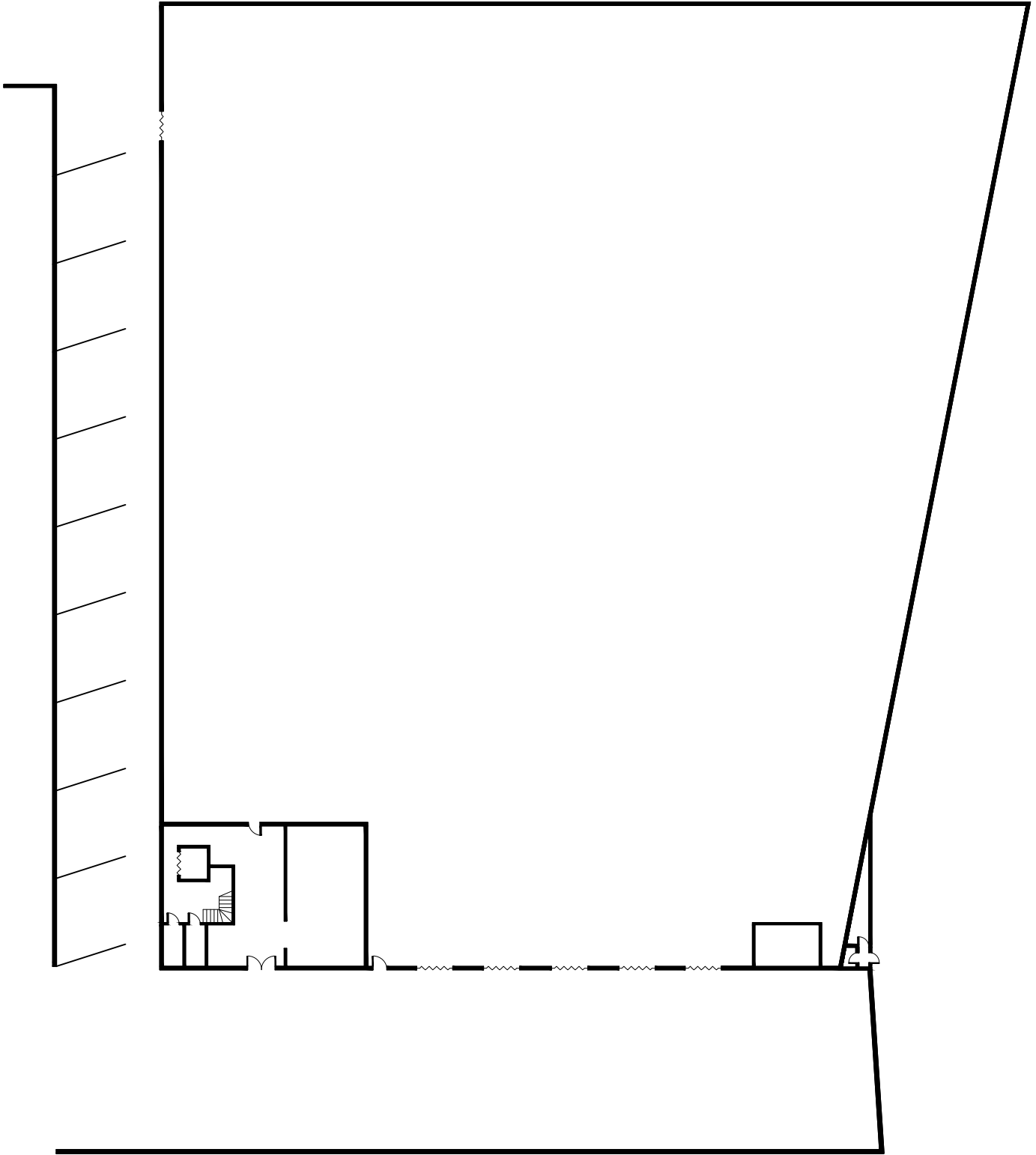
Hertfordshire Team

1a Local Board Road, Watford, WD17 2JP
01923 911 007

www.forestrealestate.co.uk
info@forestrealestate.co.uk

428 Long Drive
Greenford, UB6 8UH

F O R E S T
REAL ESTATE



Ground Floor

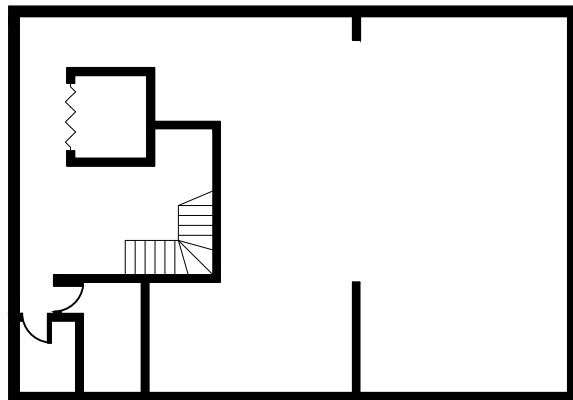
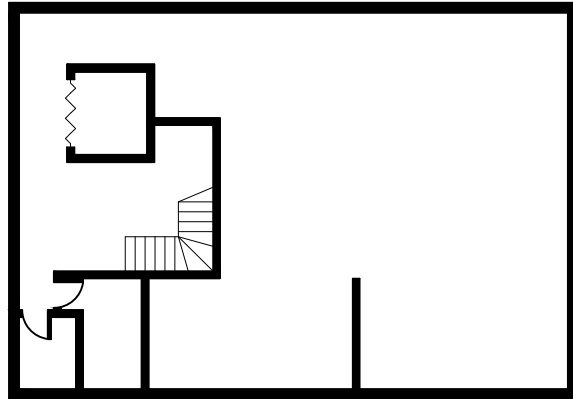
Total Area Approx 4901.9 s.q Meter (52763.8 s.q Feet)
428 Long Drive Greenwood UB6 8UH



Ground Floor
Parking

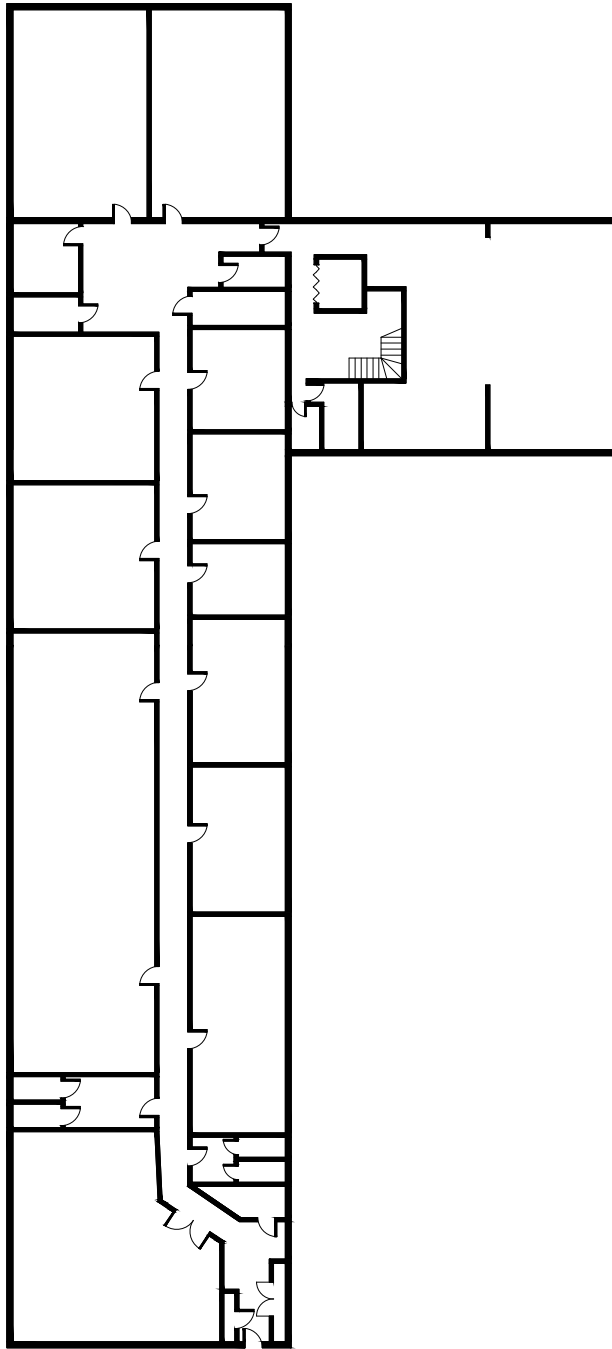
428 Long Drive Greenwood UB6 8UH

First Floor



Third Floor

428 Long Drive Greenwood UB6 8UH



Second Floor

Total Area Approx 1092.7 s.q Meter (11761.8 s.q Feet)
428 Long Drive Greenwood UB6 8UH