

Compton

For Sale
Unit 4
Islington N1



Ground & lower ground office unit
available for purchase within a
quaint development overlooking the
Wenlock Basin

For Sale

Angel Wharf

Unit 4
54 Eagle Wharf Road
Islington N1

Size

1,450 Ft²

Price

£750,000

Fitout

Not Fitted

Description

This stylish and self-contained office/showroom unit offers 1,450 sq ft of flexible workspace arranged over the ground and lower ground floors. The interior has been newly refurbished to a good standard, providing a bright and contemporary environment ideal for creative, media, or professional use. Large windows and a waterside aspect fill the space with natural light and create a calm setting. The unit benefits from its own private entrance within a gated development, offering both security and independence.



For Sale

Angel Wharf

Unit 4
54 Eagle Wharf Road
Islington N1

Size

1,450 Ft²

Price

£750,000

Fitout

Not Fitted

Description

Additional features include modern finishes throughout, good ceiling heights, bike storage, and access to a communal courtyard overlooking the tranquil Wenlock Basin, perfect for breakout space or informal meetings.



For Sale

Angel Wharf
Unit 4
54 Eagle Wharf Road
Islington N1

[Click to Play](#)



For Sale

Angel Wharf
Unit 4
54 Eagle Wharf Road
Islington N1

Unit 4

Size

1,450 Ft²

Price

£750,000

Fitout

Not Fitted

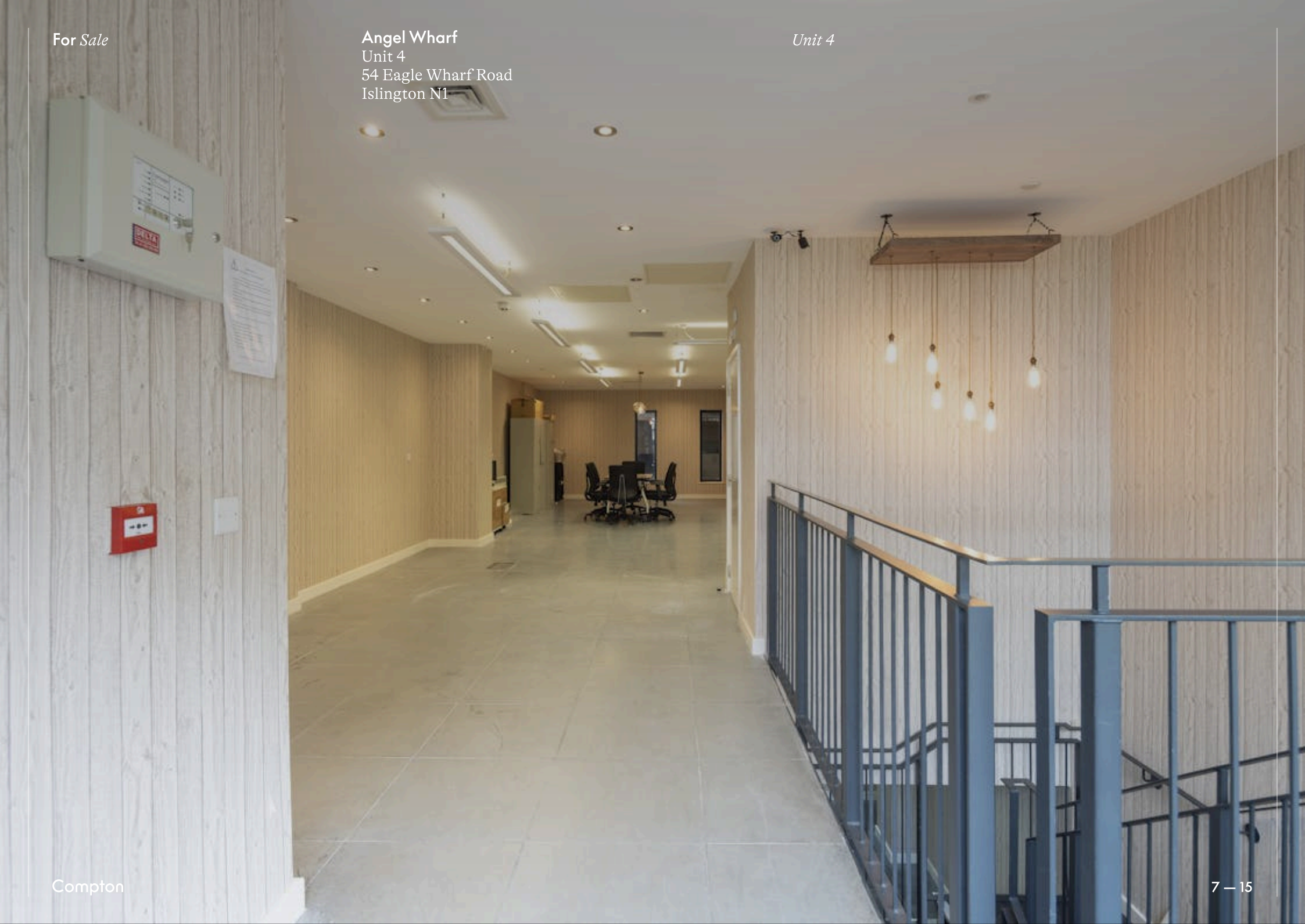


Compton

For Sale

Angel Wharf
Unit 4
54 Eagle Wharf Road
Islington N1

Unit 4



For Sale

Angel Wharf
Unit 4
54 Eagle Wharf Road
Islington N1

Unit 4



Unit 4

For Sale

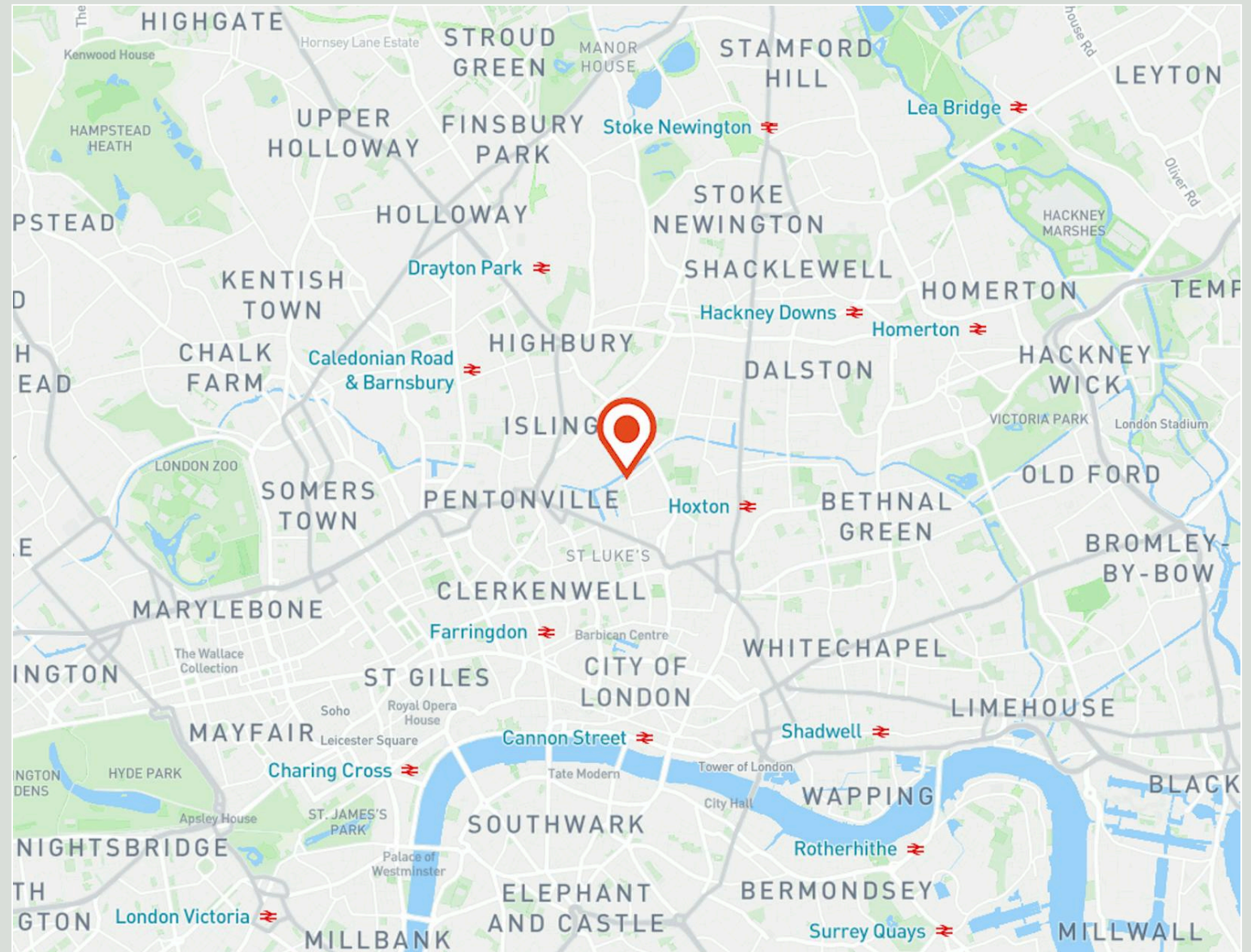
Angel Wharf

Unit 4
54 Eagle Wharf Road
Islington N1

Location

Located on Eagle Wharf Road, Angel Wharf is ideally positioned in the heart of North London. With easy access to major transport links, including nearby Angel and Old Street stations, the area is well-connected and offers a vibrant mix of local amenities, cafes, and restaurants.

This estate is uniquely located overlooking the Wenlock Basin which leads into the Regents Canal. This is an amenity enjoyed by all tenants who use the landscaped water's edge during lunch time as a communal place to meet, eat and relax.



Compton

For Sale

Angel Wharf
Unit 4
54 Eagle Wharf Road
Islington N1

Unit 4

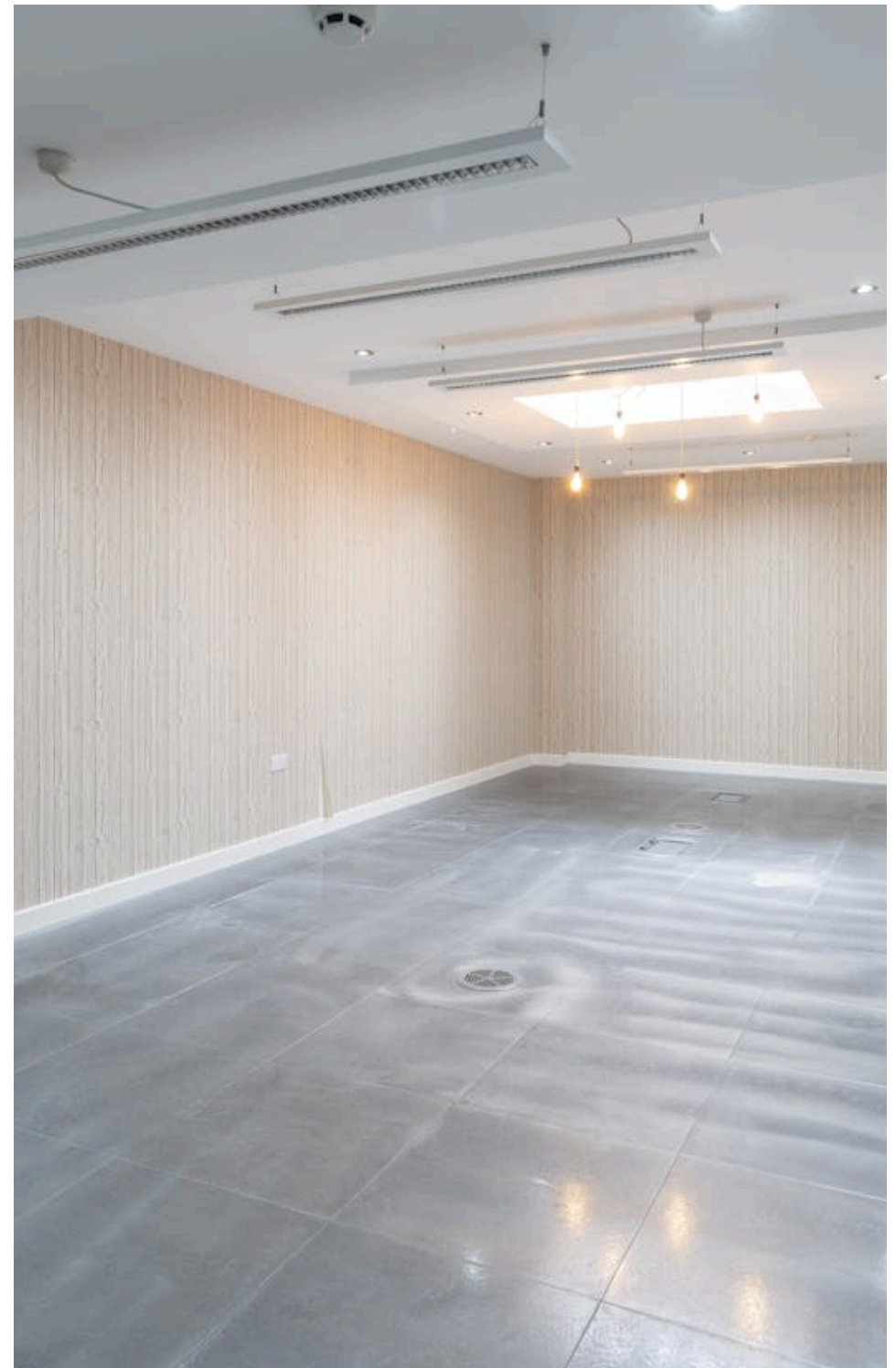


For Sale

Angel Wharf
Unit 4
54 Eagle Wharf Road
Islington N1

Amenities

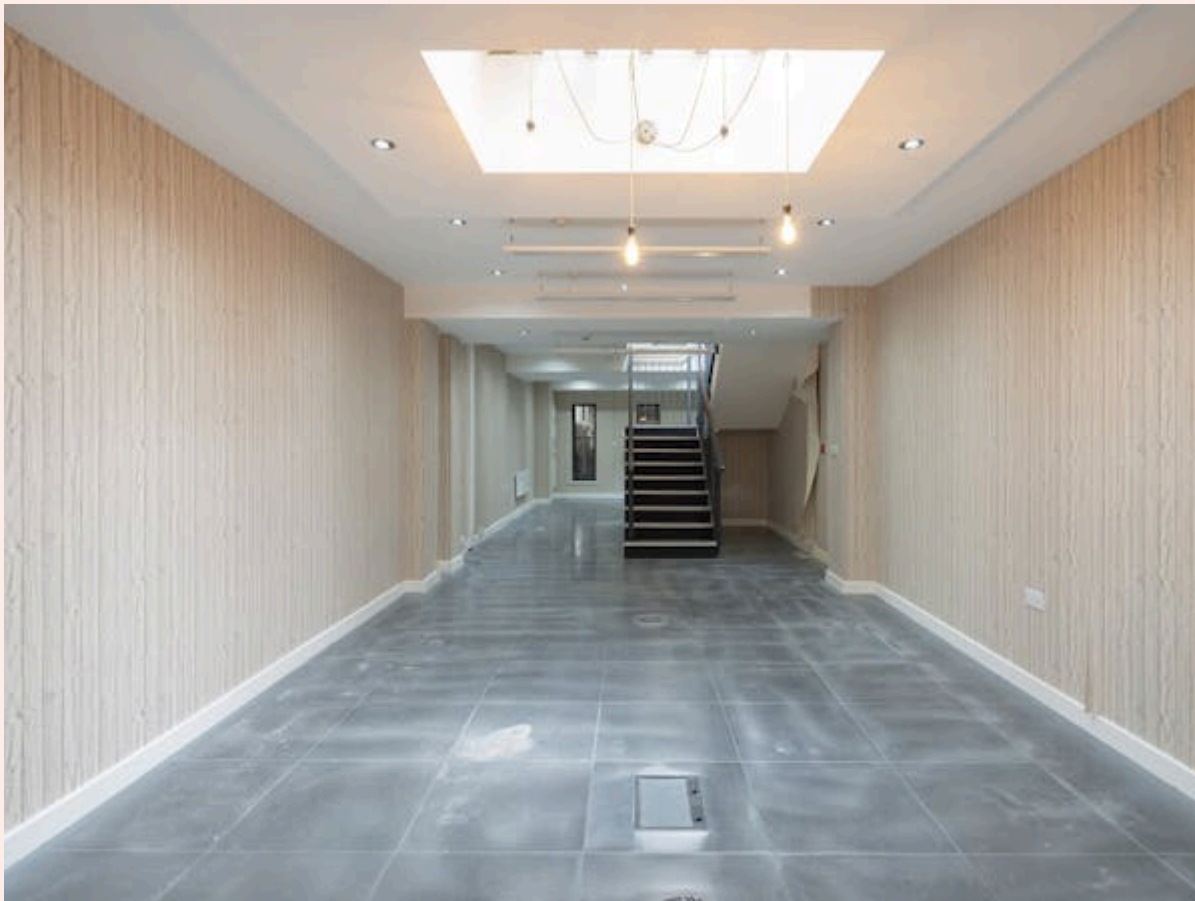
- Self-contained Ground & Lower Ground unit
- Ideal for showroom or office occupiers
- Communal Courtyard seating
- Newly refurbished
- Bike storage
- Gated development
- Overlooking the Wenlock Basin



For Sale

Angel Wharf
Unit 4
54 Eagle Wharf Road
Islington N1

Unit 4



Unit 4

For Sale

Angel Wharf
Unit 4
54 Eagle Wharf Road
Islington N1

Availability

Name	Sq Ft	Price	Rates Payable (Sq Ft)	Service Charge (Sq Ft)	Availability
Unit - G & LG	1,450	£750,000	£13.08	On Application	Available

For Sale

Angel Wharf
Unit 4
54 Eagle Wharf Road
Islington N1

Compton Concierge

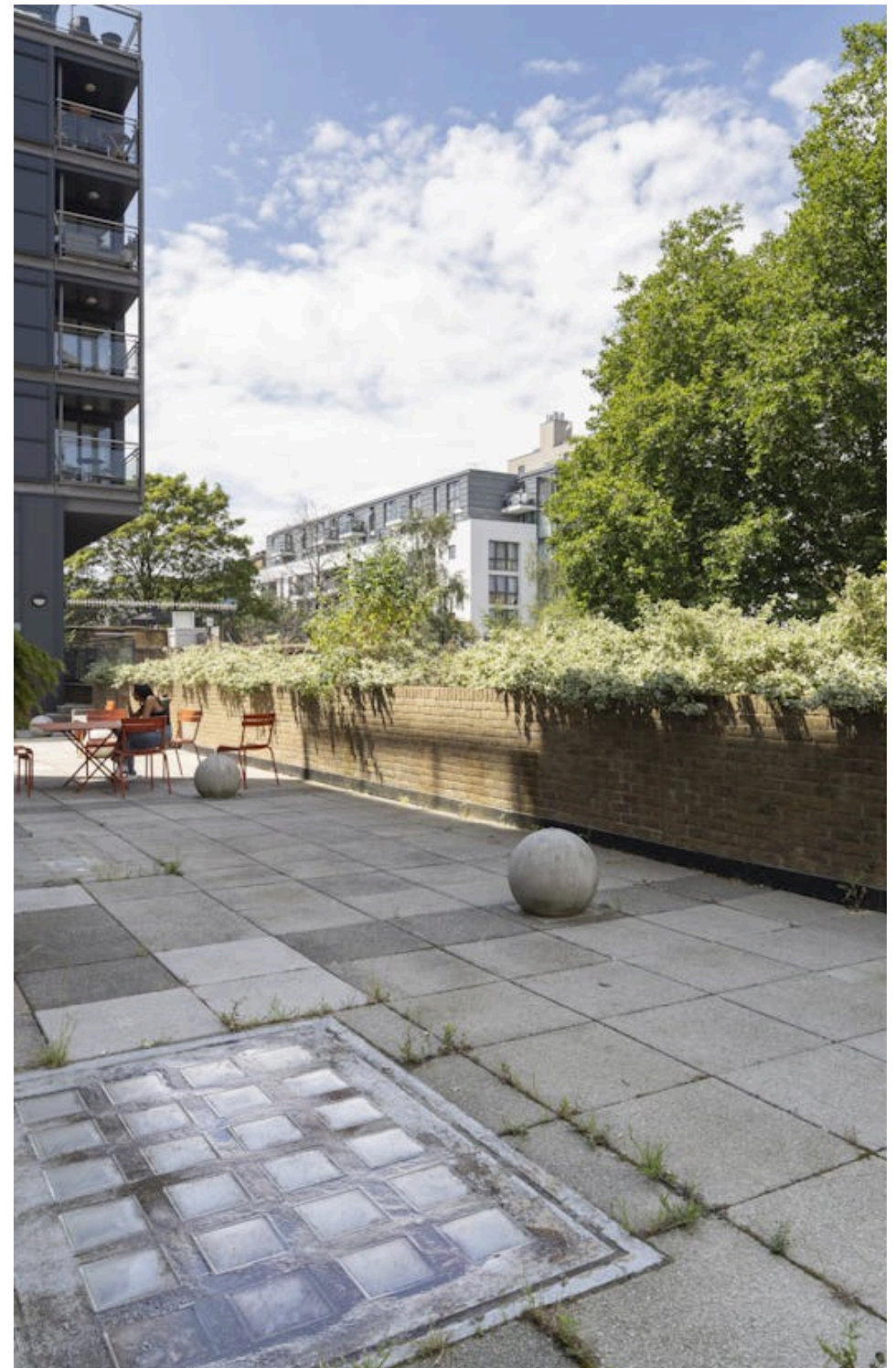
Want your workspace *managed*?

Find out more

compton.london/concierge

Content

Watch the Film
(click button)



Contact Us

[compton.london](https://www.compton.london)

020 7101 2020

enquiries@compton.london

All appointments to view must be arranged via sole agents, Compton, through:



Andy Gilbert

ag@compton.london

020 7101 2020 | 07833 993 714



Josh Perlmutter

jp@compton.london

0207 101 2020 | 07814 699 096