



W

WHITEHALL COURT

• 3 Whitehall Court SW1A 2EL •

SUITE 101A

# ICONIC BUILDING

A rare opportunity to lease a unique 1,495 sq. ft. office space in an iconic building near Whitehall. This boutique ground-floor suite boasts high ceilings, a reception area, and security services. Ideally located in the heart of Westminster, it offers a prestigious address with excellent access to central London.



• 3 Whitehall Court SW1A 2EL •



ICONIC BUILDING



1,495 SQ. FT. (138.8 SQ M) TO LET



UNIQUE PRIVATE MEMBERSHIP  
OPPORTUNITY (SUBJECT TO TERMS)





PRIME LOCATION



# VERSATILE SPACE



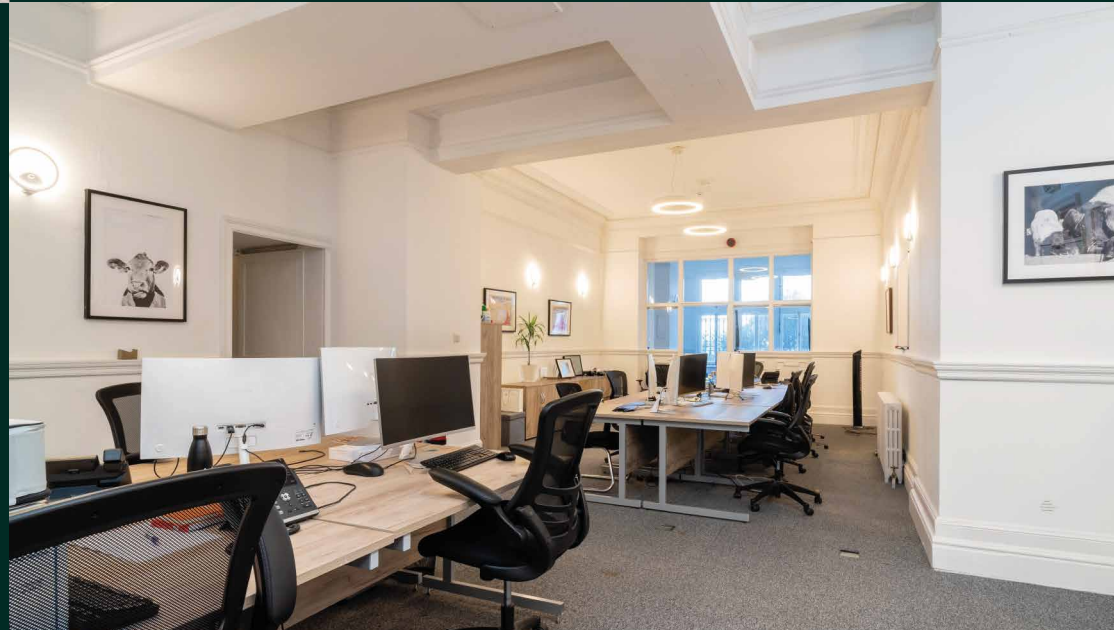
• 3 Whitehall Court SW1A 2EL •

The property comprises a ground-floor office with stunning period features and impressive high ceilings.

This versatile office space seamlessly blends traditional charm with modern functionality. Boasting high ceilings that enhance its airy ambiance, the area features a private meeting space perfect for focused discussions. The neutral decor creates a calm and professional atmosphere, allowing for easy customisation to suit your brand's identity. Ideal for teams seeking flexibility without sacrificing character, this office offers both comfort and a sense of professionalism.

This office suite, available within the iconic building shared with the Farmers' Club (potential for membership), the Royal Horseguards Hotel, and the National Liberal Club, offers a prestigious address.

The building benefits from 24-hour security and reception services. Additionally, the office has access to a small kitchen, private shower, and bike storage.

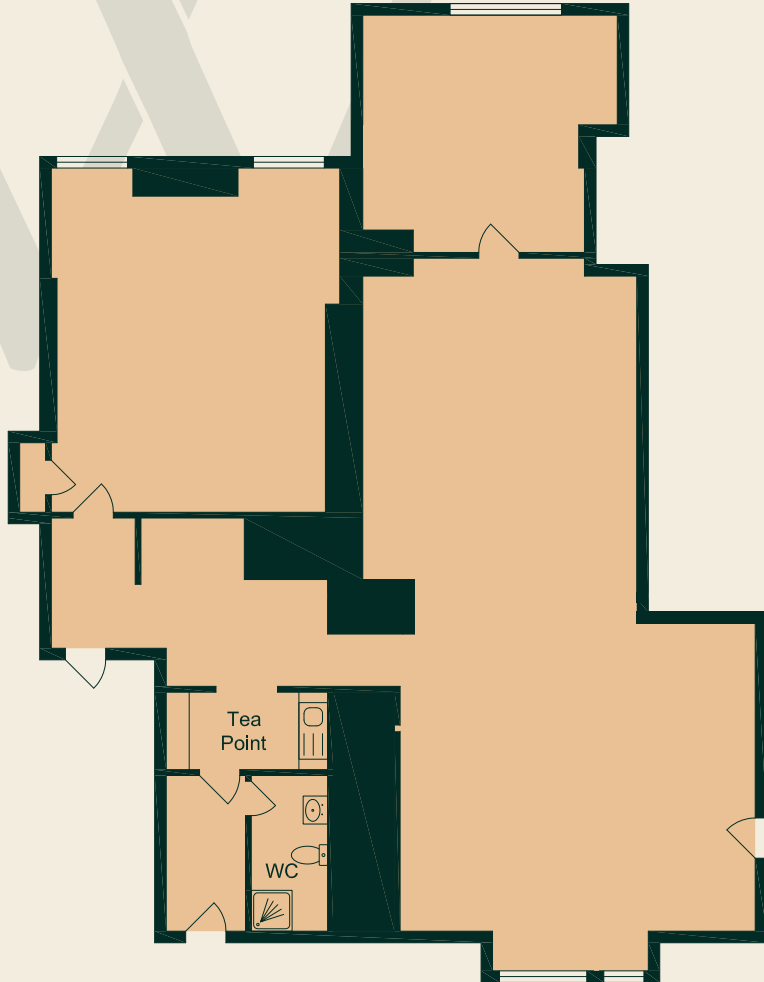


# OFFICE IN THE HEART OF WHITEHALL

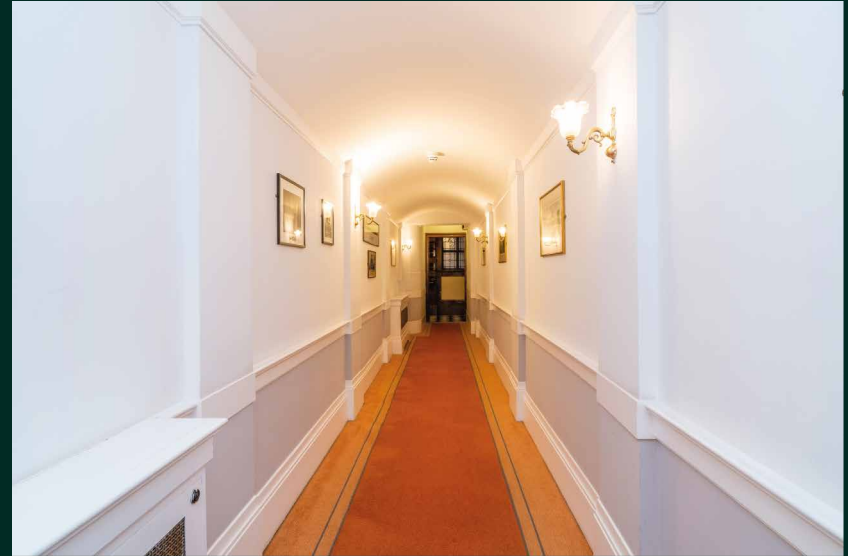


# FLOOR PLAN

1,495 SQ. FT. (138.8 SQ M) TO LET



Floor plan for illustration only.



GRADE II LISTED FEATURES THROUGHOUT



24 HOUR SECURITY



HIGH CEILINGS



GRADE II LISTED BUILDING



BIKE STORE



SHOWERS



CONCIERGE



# THE FARMERS CLUB

• 3 Whitehall Court SW1A 2EL •

The Farmers' Club is located within the same building, offering excellent dining options, accommodation, function rooms, and stunning views over the River Thames. Membership is available, subject to terms and conditions.

# HISTORY

Whitehall Court, designed by Alfred Waterhouse and Archer & Green in the mid-1880s, is one of London's most iconic landmarks, situated on the River Thames embankment. With its fairy-tale towers and spires, it forms a key part of the famous view from St. James's Park, looking towards Horse Guards Parade.

The building houses the National Liberal Club, the Royal Horseguards Hotel, the Farmers' Club, and 120 luxury residential apartments. Notable past residents include George Bernard Shaw, H. G. Wells, Oscar Wilde, William Gladstone, Herbert Kitchener, 1st Earl Kitchener, and Alec Douglas-Home.



# PRIME WHITEHALL LOCATION



Whitehall Court

The area around Whitehall Court is a key part of London, rich in history and political significance. It's home to iconic landmarks such as the Houses of Parliament, Big Ben, and Westminster Abbey, all just a short walk away. The area also includes Trafalgar Square, known for Nelson's Column and the National Gallery, as well as St. James's Park, a peaceful green space near Buckingham Palace.

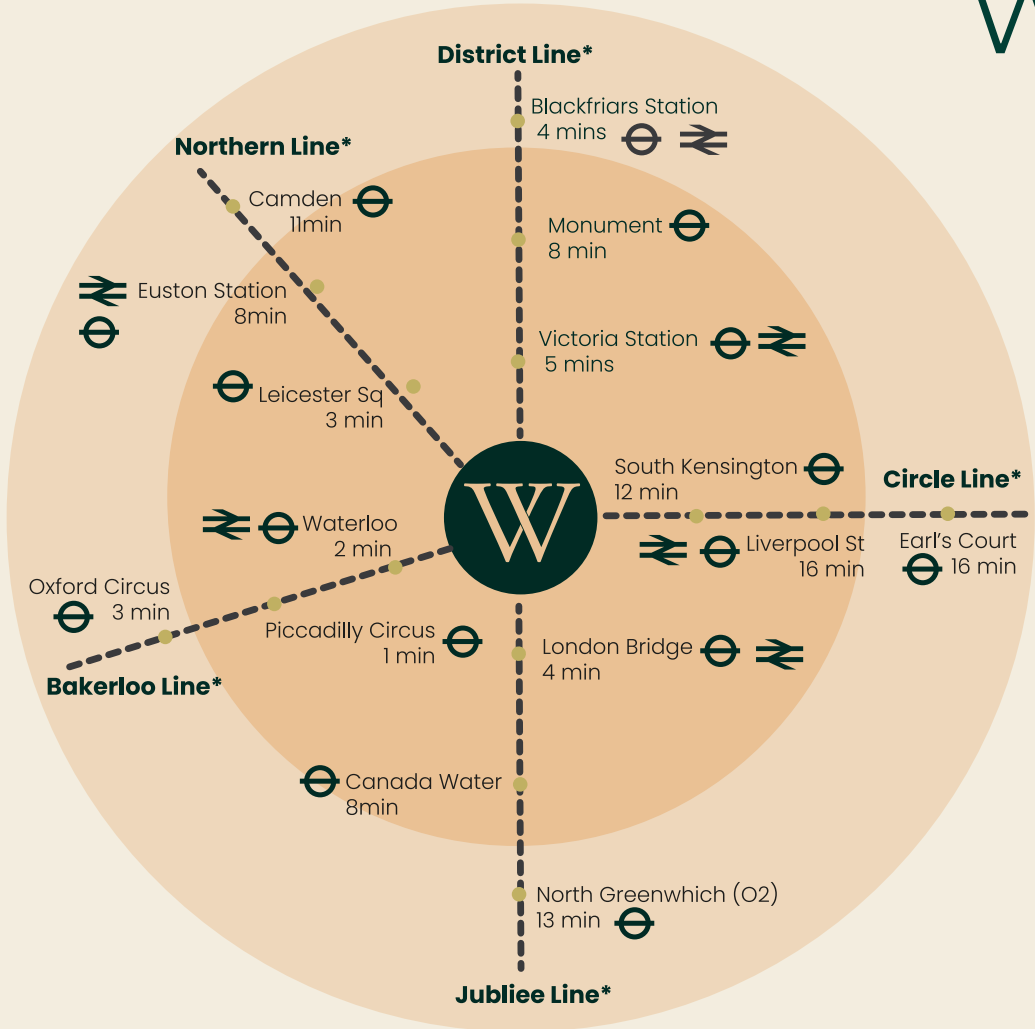
For dining, there's a mix of options from Kerridges Bar and Grill, The Corinthia Hotel and multiple offers at the newly refurbished OWO (Old War office), which also houses the world famous Raffles. The neighborhood is also home to key government buildings like the Treasury and the Foreign and Commonwealth Office, making it a political hub.

Transportation is convenient with Westminster Station offering connections to the Jubilee, District, and Circle lines, and Charing Cross Station nearby for National Rail services. This area combines political power, cultural landmarks, and diverse dining options, making it a vibrant and dynamic part of London.

• 3 Whitehall Court SW1A 2EL •



# WELL CONNECTED



8

Trafalgar Sq 8 mins walk+

10

Southbank centre 10 mins walk+

11

Houses of Parliament 11 mins walk+

15

Covent Garden 15 mins walk+

\*Time shown is taken from closest station for that Line. Time according to google maps.

+Distance from Whitehall Court

# CONVENIENT TRANSPORT LINKS



2 min Walk



## Embankment Station

Northern Line  
Bakerloo Line  
District Line  
Circle Line



4 min Walk



## Charing Cross Station

Northern Line  
Bakerloo Line  
National Rail



8 min Walk



## Westminster Station

Jubilee Line  
District Line  
Circle Line

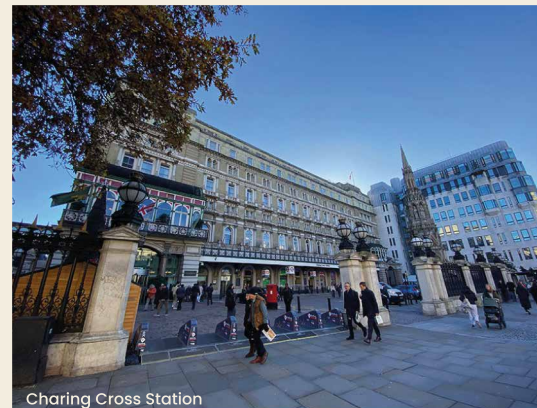
Embankment Station (around 4 minutes on foot) – offering Bakerloo, District, Circle, and Northern line services, connecting to locations such as the South Bank, Covent Garden, and London Bridge.

Charing Cross Station (about 4-minute walk) – served by the Bakerloo and Northern lines, providing quick access to destinations like Oxford Street, Camden, and Waterloo.

Westminster Station (approximately 8-minute walk) – served by the Jubilee, District, and Circle lines, providing direct links to major areas such as Canary Wharf, the City of London, and the West End.

### National Rail:

London Victoria Station (15-minute walk) is one of the main rail terminals nearby, providing services to the south of England, including Brighton, Gatwick, and other coastal destinations. Charing Cross Station (10-minute walk) offers services to southeast London and Kent.



Charing Cross Station



Embankment Station



Westminster Station



River Thames from Jubilee Bridge

WHITEHALL IS ONE OF LONDON'S MOST WELL-CONNECTED AREAS, OFFERING EXCELLENT TRANSPORT LINKS FOR EASY ACCESS TO VARIOUS PARTS OF THE CITY AND BEYOND.

BEING BASED IN WHITEHALL COURT MEANS YOU ARE CONVENIENTLY SERVED BY SEVERAL NEARBY LONDON UNDERGROUND STATIONS, INCLUDING WESTMINSTER STATION, KING CROSS STATION AND EMBANKMENT STATION.



The Corinthia



Kerridges at the Corinthia



Whitehall Gardens



Trafalgar Square/ The Strand



Club Quarters Hotel



The Corinthia



Kerridges at the Corinthia



The Sherlock Holmes



Westminster Abbey



Big Ben & Houses of Parliament

# NEIGHBOURHOOD



## Food

1. Kerridges Bar and Grill
2. The Corinthia
3. The Northhall
4. The Royal Horseguards Hotel
5. One Twenty One Two
6. The North Hall
7. Boyds Bar and Grill
8. Laparouse (French)
9. Saison by Mauro Colagreco (Raffles)
10. Paper Moon
11. Skylon



## Drink

1. Equus
2. The Guards Bar
3. The Clarence
4. 40 Elephants
5. Silver Cross
6. Old Shades
7. Boyds Bar and Grill
8. Laparouse (French)
9. Saison by Mauro Colagreco (Raffles)
10. Paper Moon
11. Skylon



## Landmarks

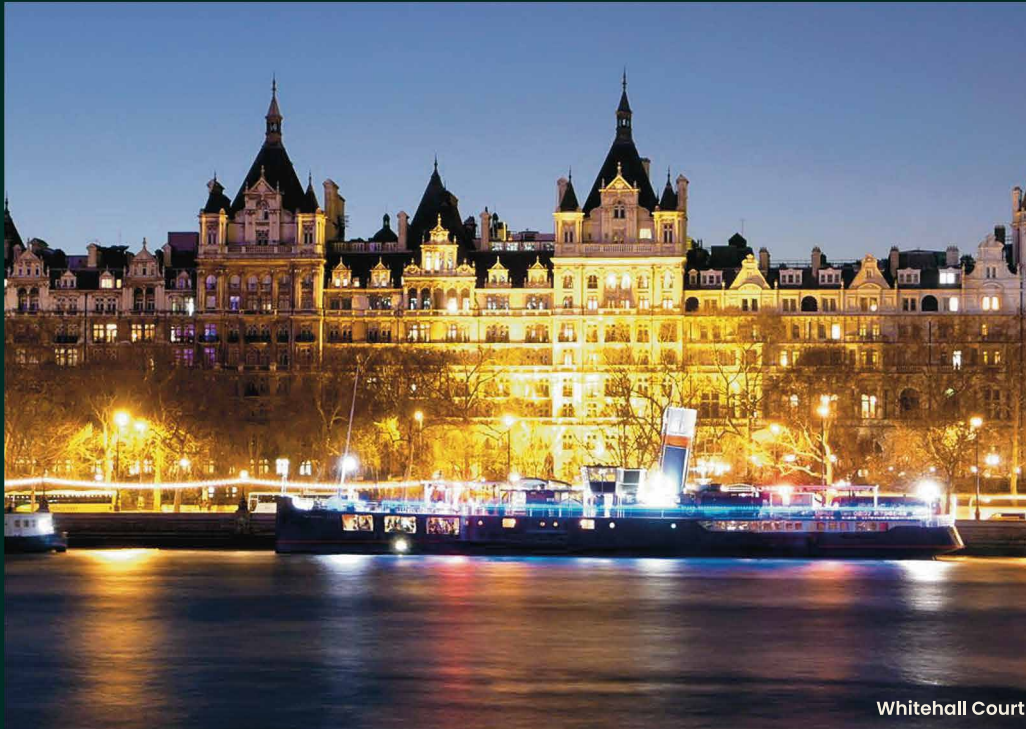
1. Trafalgar Sq
2. OWO (Old War Office)
3. Raffles
4. Horse Guards Parade
5. The Farmers Club
6. Whitehall Gardens
7. Westminster & House of Commons
8. Downing Street
9. County Hall
10. St James Park
11. Royal Festival Hall



# TERMS

**New Flexible Direct from the landlord**

**Rent £89,500 per annum, inclusive of service charge.**



Whitehall Court

Misrepresentation act 1967

These particulars are intended only to give a fair description of the property and do not form the basis of a contract or any part thereof. The descriptions, dimensions and all other information are believed to be correct but their accuracy is in no way guaranteed.

# GET IN TOUCH

**Please contact sole agents Medway and Law Chartered Surveyors for further information or to arrange a viewing.**



**ASHLEY MEDWAY BSc (Hons) MRICS**

COMMERCIAL AGENT

**T:** 0207 043 0111

**M:** 07812 205327

**E:** [ashley@medwayandlaw.co.uk](mailto:ashley@medwayandlaw.co.uk)



**Oliver Cliftt**

COMMERCIAL AGENT

**T:** 0207 043 0111

**E:** [Oliver@medwayandlaw.co.uk](mailto:Oliver@medwayandlaw.co.uk)



**MEDWAY & LAW**  
CHARTERED SURVEYORS

[www.medwayandlaw.co.uk](http://www.medwayandlaw.co.uk)

20 HANOVER STREET, MAYFAIR, LONDON, W1S 1YR