



Unit 6 Jupiter House

Calleva Park, Aldermaston, RG7 8NN

Storage / Workshop Unit

1,193 sq ft
(110.83 sq m)

- 5.3 m eaves height
- 3 phase power
- WC's
- Blower heaters (to be tested)
- Lighting

Unit 6 Jupiter House, Calleva Park, Aldermaston, RG7 8NN

Summary

Available Size	1,193 sq ft
Rent	£15,000 per annum exclusive
Rateable Value	£6,000
Service Charge	£1,924 per annum
Legal Fees	Each party to bear their own costs
EPC Rating	C (73)

Description

Unit 6 Jupiter House comprises a mid terraced unit. Unusually for Calleva Park the unit has no mezzanine therefore the unit benefits from 5.3 m eaves height. It has the benefit of its own WC's and kitchenette.

Location

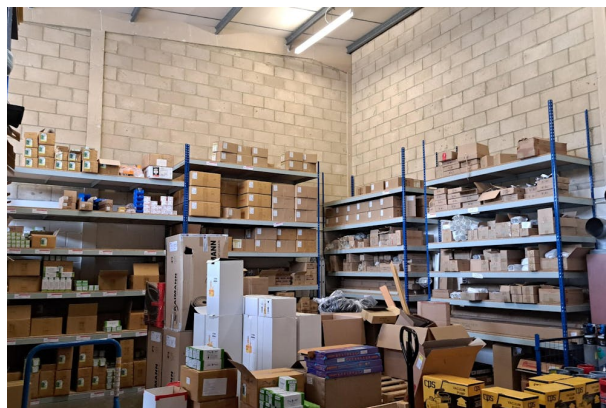
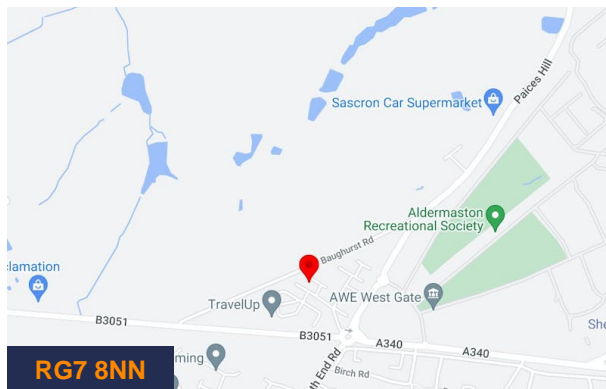
Calleva Park, Aldermaston, which fronts the A340 and B3051, is at the centre of the triangle bounded by Reading, Newbury and Basingstoke, each within an approximate 10 mile radius. Junction 6 of the M3 is approximately 9 miles and Junction 12 of the M4 is only 8 miles. The Park provides a UK base for a number of international organisations, together with newly formed and expanding businesses involved in the electronics, computing and manufacturing and service sectors.

Viewings

Strictly by appointment through the sole agents.

Terms

A new lease for a term by arrangement to be outside the Security of Tenure and Compensation Provisions of the Landlord & Tenant Act 1954 Part II (as amended).



Viewing & Further Information



Brian Pickett

01256 840777 | 07780 994420
brian.pickett@bdt.uk.com



Russell Ware

01256 840777 | 07747 846422
Russell.Ware@bdt.uk.com



Andy Gibbs

01256 840777 | 07766 951719
andy.gibbs@bdt.uk.com