



OFFICE TO LET

## 30 BROADWICK STREET

London, W1F 8LX

A rare opportunity to acquire the best floor in Soho

10,572 SQ FT

**RX**  
LONDON

# Summary

Available Size	10,572 sq ft
Rates Payable	£49.25 per sq ft
Service Charge	£19.15 per sq ft
Total	-
EPC Rating	A (18)

## Key Features

- Three demised terraces
- Premium fit out
- Floor to ceiling glazing
- Views across Soho
- High end shower and locker facilities
- Large building reception

## Description

Introducing a rare opportunity to acquire a floor in one of Soho's best buildings. The 5th floor of 30 Broadwick Street offers 10,572 sq ft of premium office space benefiting from a high quality fit out and three stunning terraces with unrivalled views across Soho.

## Location

The building is exceptionally located in the heart of Soho on the doorstep of a vibrant retail and restaurant scene, and just a short stroll to the Tottenham Court Road Elizabeth line entrance on Dean Street.

## Accommodation

The accommodation comprises the following areas:

Name	sq ft	sq m	Availability
5th	10,572	982.17	Available
<b>Total</b>	<b>10,572</b>	<b>982.17</b>	

## Viewings

Approved named parties only.

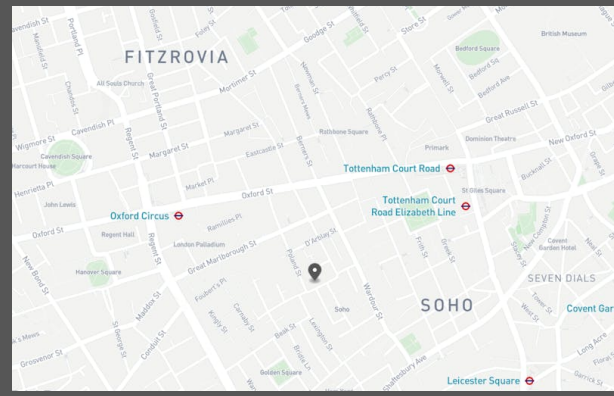
All enquiries strictly through RX London.

## Terms

The floor is available by way of Assignment until November 2026.

The lease is contracted inside the security of tenure provisions of the Landlord & Tenant Act 1954, Part II (as amended), at a passing rent of £1,163,000 per annum.

Premiums offers are sought.



## Get in touch

Catherine Lloyd

020 7096 7050 | 07795 445 833  
catherine.lloyd@rx.london

Ed Betts

020 7096 7050 | 07771 513 169  
ed.betts@rx.london

### rx.london

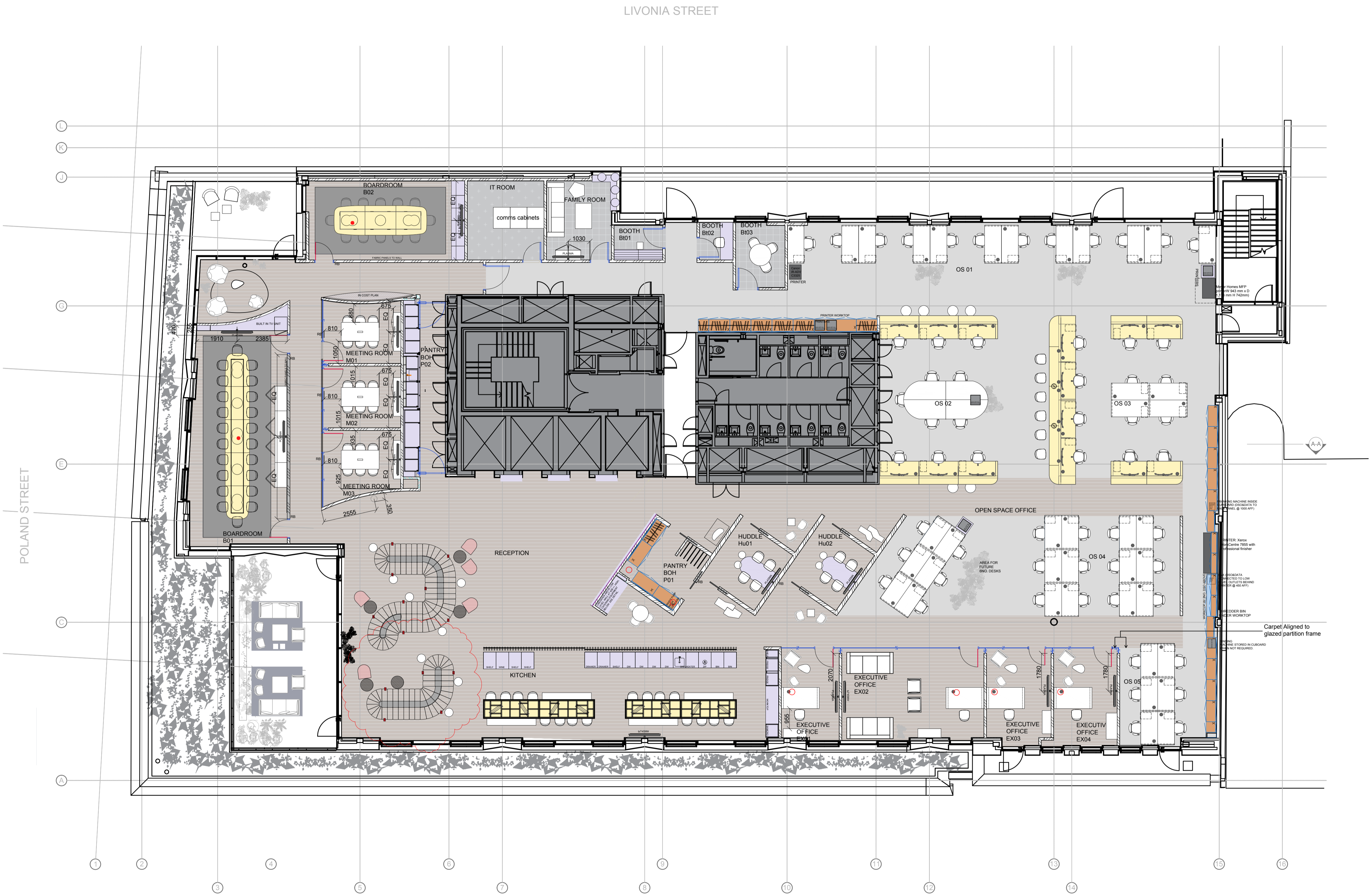
These particulars are for general information only and do not constitute any part of an offer or contract. All statements contained therein are made without responsibility on the part of the vendors or lessors and are not to be relied upon as statement or representation of fact. Intending purchasers or lessees must satisfy themselves, by inspection, or otherwise, as to the correctness of each of the statements of dimensions contained in these particulars.

Generated on 29/01/2025



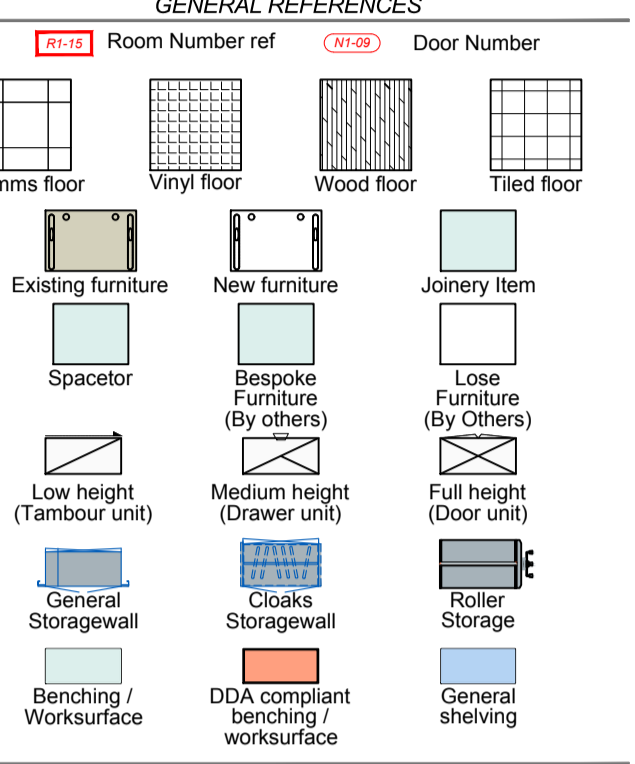
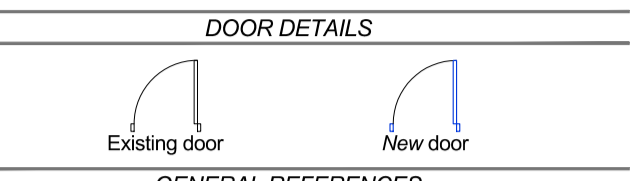






**GENERAL ARRANGEMENT LEGEND**

Symbols shown are not to scale  
some symbols may not appear on the layout plan



NOTE:  
All Loose Furniture Produced By DHL

S	Update lounge	HW	19.03.19
R	Update barista	HW	03.03.19
Q	Update printer areas/Exec offices	HW	06.03.19
P	Update printer areas/Exec offices	HW	21.02.19
O	Update printer sizes/Exec offices	HW	19.02.19
Rev	Descriptive amendments	Drawn by	Date

Pre-Design - Construction - As Built  
**CONSTRUCTION**

Client  
**MEYER BERGMAN**

Client Contact

Site Address  
**30, Broadwick Street  
London  
W1F 8JB**

Drawing Title  
**General Arrangement**

Account Manager  
**Rob Gregory**

Designer/ Project Manager  
**Hannah Walsworth**

Scale  
**1:100@A1**

Drawn by  
**AA**

First Drawing Date  
**05/11/2018**

Contract Number  
**59077**

Building  
**01**

Floor  
**05th**

Detail  
**GA**

Revision  
**S**

First Floor  
322 High Holborn  
London  
WC1V 7PB  
T: +44 (0)20 7553 9500  
www.oktra.co.uk

NOTES: This drawing is the exclusive Copyright of Oktra and may not be copied or handed to any Third parties without prior consent. All dimensions must be checked on site and not scaled from the drawing. All drawings and proposals are subject to approvals by statutory authorities