



ESSEX ROAD, DALSTON, N1 GUIDE PRICE £325,000

Share of Freehold

GUIDE PRICE £325,000 to £350,000

Ground Floor & Basement Retail Space on Essex Road, Islington, N1 is now available.

Offered with VACANT POSSESSION, this space, spanning across over 900 square feet over two floors, makes for an

- Footfall
- Freehold
- Ground Floor
- Investment
- Retail
- Spacious
- Storage

Ground Floor & Basement Retail Space on Essex Road, Islington, N1 is now available. Offered with vacant possession, this space, spanning across over 900 square feet over two floors, makes for an excellent investment opportunity.

The subject property is situated on Essex Road, in between Essex Road Station, Highbury & Islington Station, Dalston Junction and Dalston Kingsland Station.

Essex Road comprises of an abundance of retail spaces generating a high footfall at all times. This property was formerly used as a launderette.

The property is a mid-terrace property with a shop front entrance, previously used as a launderette over ground and basement floors of approx. 948 sq. ft with a WC and utility room.

Tenure: Share of Freehold




ESSEX ROAD, DALSTON, N1
GUIDE PRICE £325,000 Share of Freehold

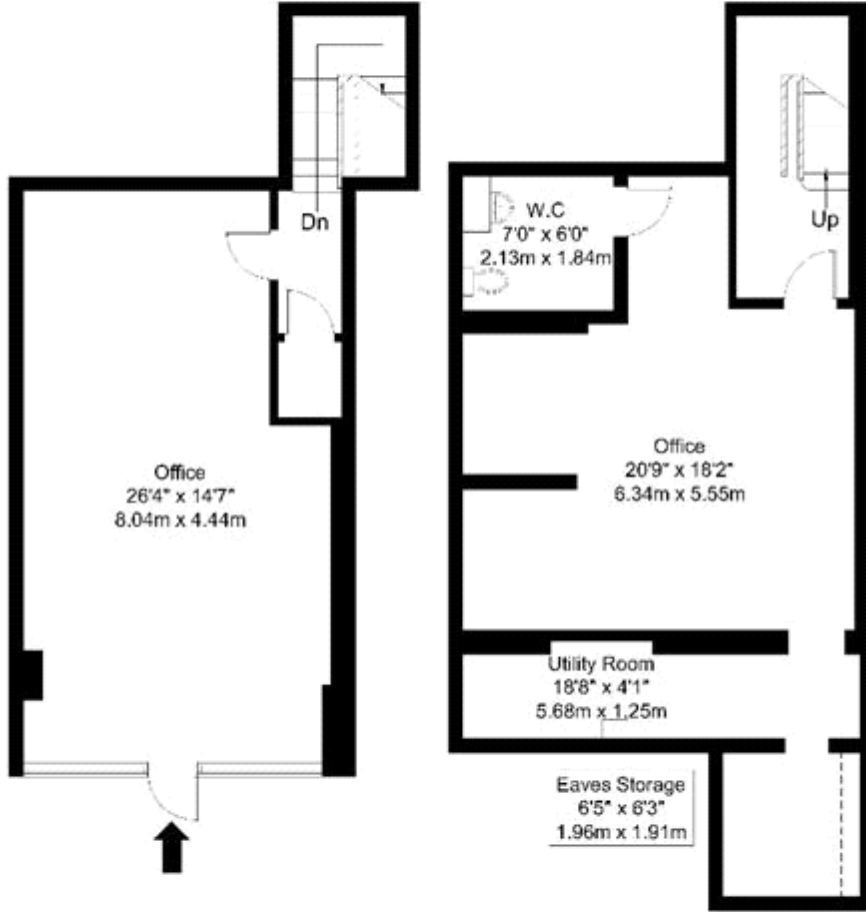
Essex Road, N1 3PD

Approx Gross Internal Area = 87 sq m / 936 sq ft

Reduced Headroom = 1.1 sq m / 12 sq ft

Total = 88.1 sq m / 948 sq ft

 Reduced Headroom



Ground Floor

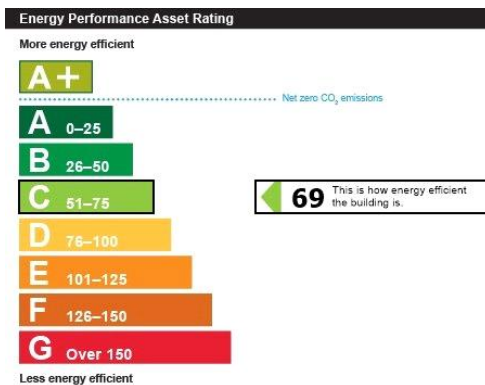
Lower Ground Floor

Ref:

Copyright **BLEU
PLAN**

The Floor plan is not to scale and measurements and areas shown are approximate and therefore should be used for illustrative purposes only. The plan has been prepared in accordance with the RICS code of Measuring Practice and whilst we have confidence in the information produced it must not be relied on. Maximum lengths and widths are represented on the floor plan. If there is any aspect of particular importance, you should carry out or commission your own inspection of the property.

Copyright @ BLEUPLAN



Whilst every effort is made to ensure the accuracy of these details, it should be noted that the measurements are approximate only. Floorplans are for representation purposes only and prepared according to the RICS Code of Measuring Practice by our floorplan provider. Therefore, the layout of doors, windows and rooms are approximate and should be regarded as such by any prospective purchaser. Any internal photographs are intended as a guide only and it should not be assumed that any of the furniture/fitments are included in any sale. Where shown, details of lease, ground rent and service charge are provided by the vendor and their accuracy cannot be guaranteed, as the information may not have been verified and further checks should be made either through your solicitor/conveyance. Where appliances, including central heating, are mentioned, it cannot be assumed that they are in working order, as they have not been tested. Please also note that wiring, plumbing and drains have not been checked.