

AREA PLAN

UNIT B2

Greatham Road Ind. Est., WATFORD, WD23

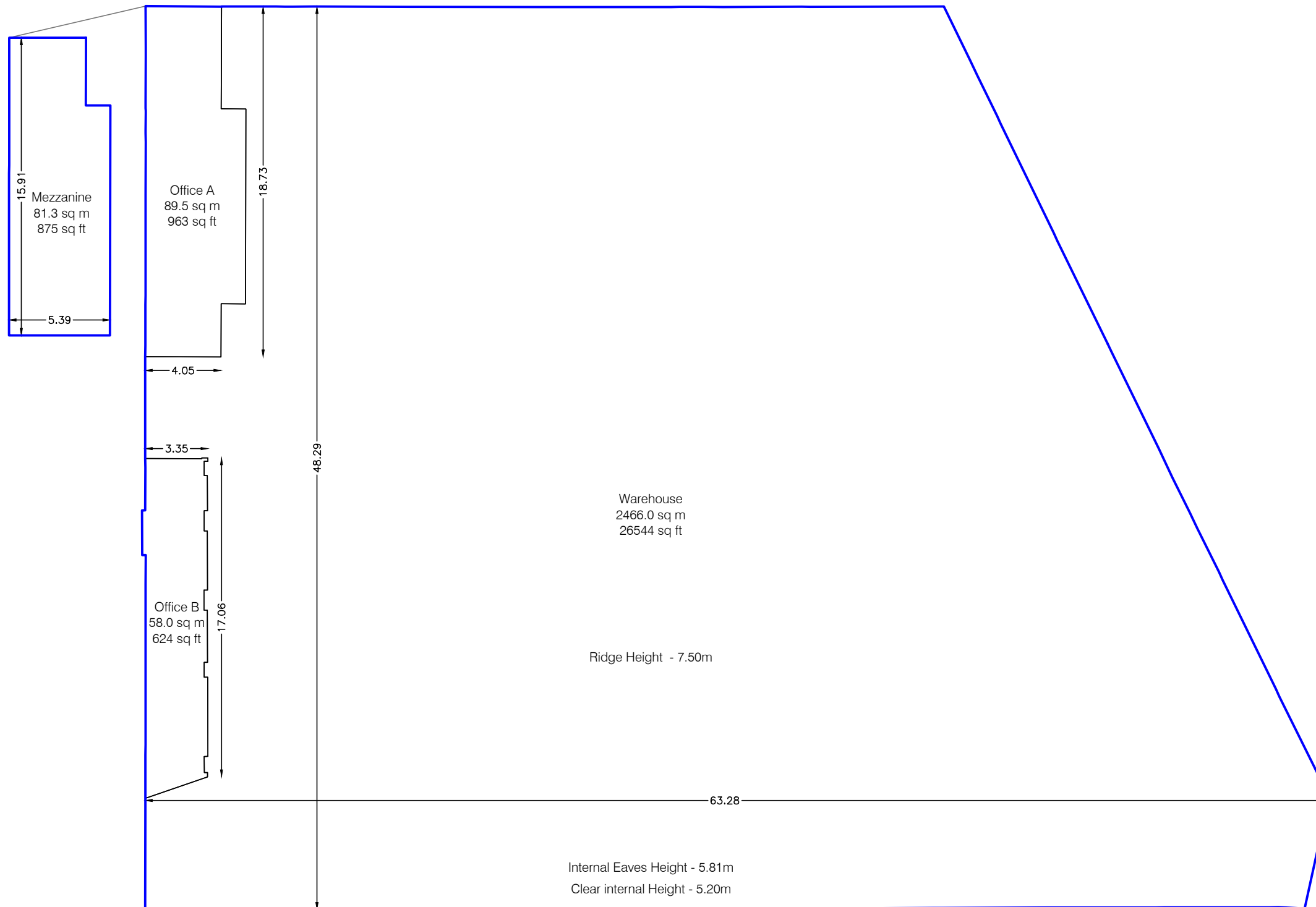
Ground Floor & Mezzanine

Gross Internal Area

 GIA	2694.8 sq m	29006 sq ft
------------------------------------------------------------------------------------------------------	--------------------	--------------------

The following have been INCLUDED in the TOTAL GIA:

Office A	89.5 sq m	963 sq ft
Office B	58.0 sq m	624 sq ft
Warehouse	2466.0 sq m	26544 sq ft
Mezzanine	81.3 sq m	875 sq ft



Dwg No.

46256-AG

Issue A

February 2021

Scaled for presentation purposes

Plowman Craven

Regulated by RICS



T +44(0)1582 765566

W www.plowmancraven.co.uk

Condition of Site:

Occupied
Vacant
 Under Construction
 Heavy Fit-Out
 Cat A Fit-Out
Shell & Core

Notes:

This drawing complies with the RICS Code of Measuring Practice, 6th edition (September 2007) and the Globally applicable 6th Edition (May 2015). It indicates the extent of the areas quoted, produced to an accuracy commensurate with standard presentation scales. It is held in a scaled digital CAD format.

Revisions:

A - Original Issue (February 2021)