



Storage Compound

Binsey Lane, Oxford, OX2 0EX

Secure storage compound close to Oxford city centre

19,200 sq ft
(1,783.74 sq m)

- 0.44 acres
- Secure palisade fencing
- 0.8 miles from Oxford City Centre
- 1 mile from Osney Mead Industrial Estate
- Two double gates to front of site

Storage Compound, Binsey Lane, Oxford, OX2 0EX

Summary

Available Size	19,200 sq ft
Rent	£35,000 per annum
Business Rates	RV Yard 2: £11,750 and Yard 3: £9,300
Service Charge	N/A
Estate Charge	N/A
EPC Rating	EPC exempt - No building present

Location

The property is located on Binsey Lane, which is accessed from Botley Road, a main arterial road into Oxford City Centre.

Binsey Lane is a quiet lane leading to Binsey Village including the Perch public house and PGA Golf.

The location is in close proximity to Oxford city centre and Osney Mead Industrial Estate.

Description

The storage compound comprises a level site of approximately 0.44 acres with a durable stone and compacted earth surface. The site is fully secure with palisade fencing to the front and timber fencing, thick trees and bushes to the rear. The palisade fencing includes two double gates for flexible access arrangements.

There is a secure site containing an electricity pylon directly to the rear of the site.

Accommodation

The accommodation comprises the following areas:

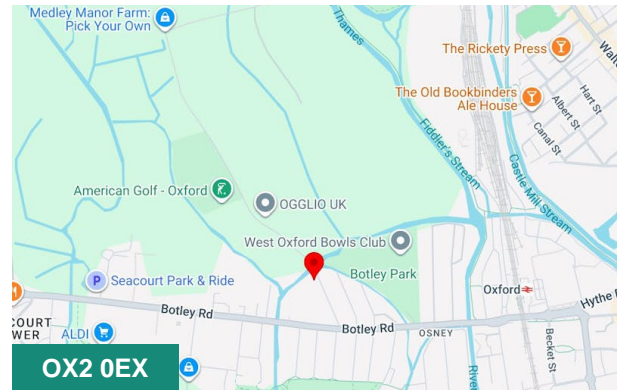
Name	sq ft	sq m	Availability
Outdoor - Yard 3&4	19,200	1,783.74	Available
Total	19,200	1,783.74	

Viewings

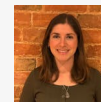
The site can be viewed from Binsey lane at any time. Access into the site itself is through prior arrangement with the sole agents.

Terms

Available by way of a new lease on terms to be agreed.



Viewing & Further Information



Sophie Holder

01865883364 | 07587221536

sophie@benedicts.co.uk



Edward Lifely

01865 883364 | 07464492953

edward@benedicts.co.uk