

# ADELAIDE HOUSE

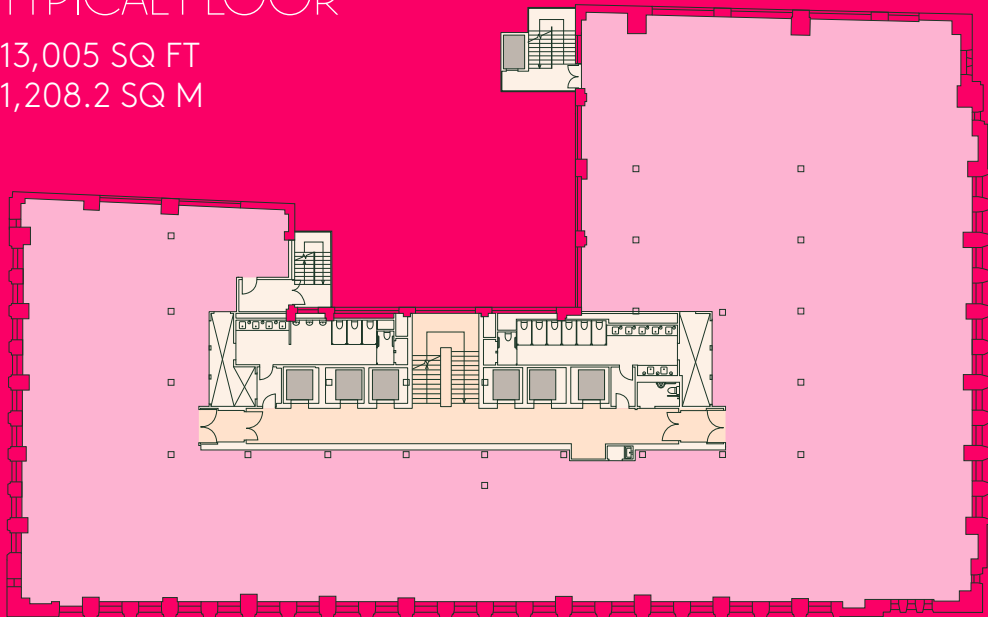
LONDON BRIDGE



129,000 SQ FT OF  
ICONIC RIVERSIDE  
WORKSPACE WITH  
SPECTACULAR VIEWS.  
PC Q4 2024.

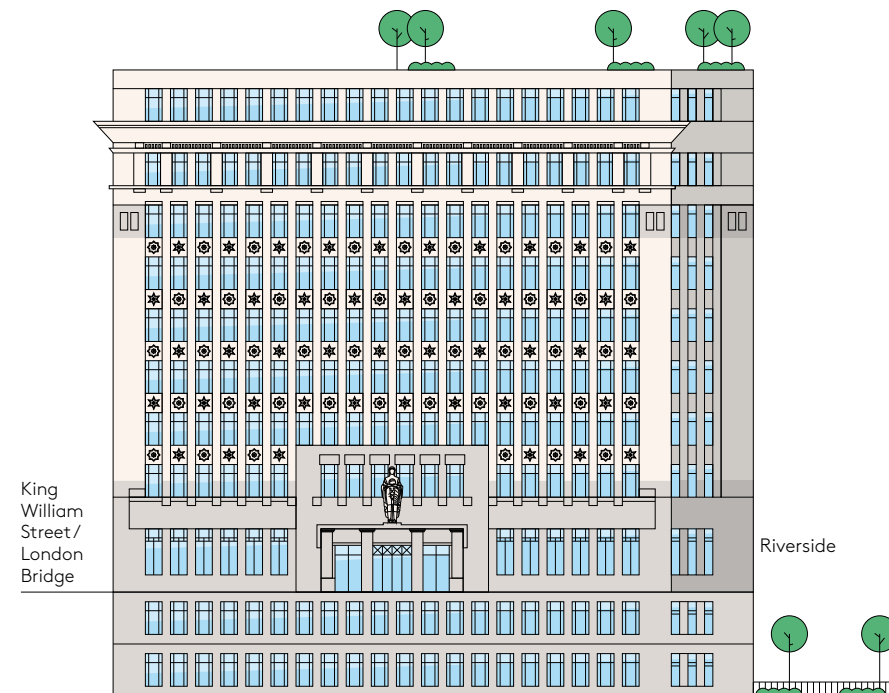
TYPICAL FLOOR

13,005 SQ FT  
1,208.2 SQ M



Indicative view of the top floor terrace

	OFFICE (SQ FT)
8	13,069
7	12,858
6	13,021
5	13,083
4	13,005
3	13,167
2	13,225
1	13,403
G	11,578
RL	13,284
TOTAL	129,693



ALL AREAS ARE APPROXIMATE.

ADELAIDE HOUSE

# BUILDING HIGHLIGHTS



Major rebuild with all new services, repositioned core & new windows



6 new passenger lifts



4 pipe fan coil air conditioning



Potential for a business lounge



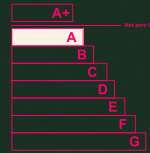
330 Cycle Spaces



Occupational density of 1:8 sq m



Targeting Breeam Excellent



Targeting EPC Rating A

## AdelaideHouse.com

Important notice relating to the Misrepresentation Act 1967 and the Property Misdescriptions Act 1991: (i) the particulars are set out as a general outline only for guidance of intending purchasers or lessees and do not constitute, nor constitute part of, an offer or contract (ii) all descriptions, dimensions, references to condition and necessary permission for use and occupation, and other details are given in good faith and are believed to be correct, but any intending purchasers or occupiers should not rely on them as statements or representations of fact, but must satisfy themselves by inspection or otherwise as to the correctness of each of them. April 2023.

