



**316 & 317 PORTSMOUTH MOTOR PARK, PORTSMOUTH,  
PO3 5RF**

DATA CENTRE / HI TECH / LAB / INDUSTRIAL / WAREHOUSE TO LET  
20,690 TO 46,410 SQ FT (1,922.16 TO 4,311.63 SQ M)

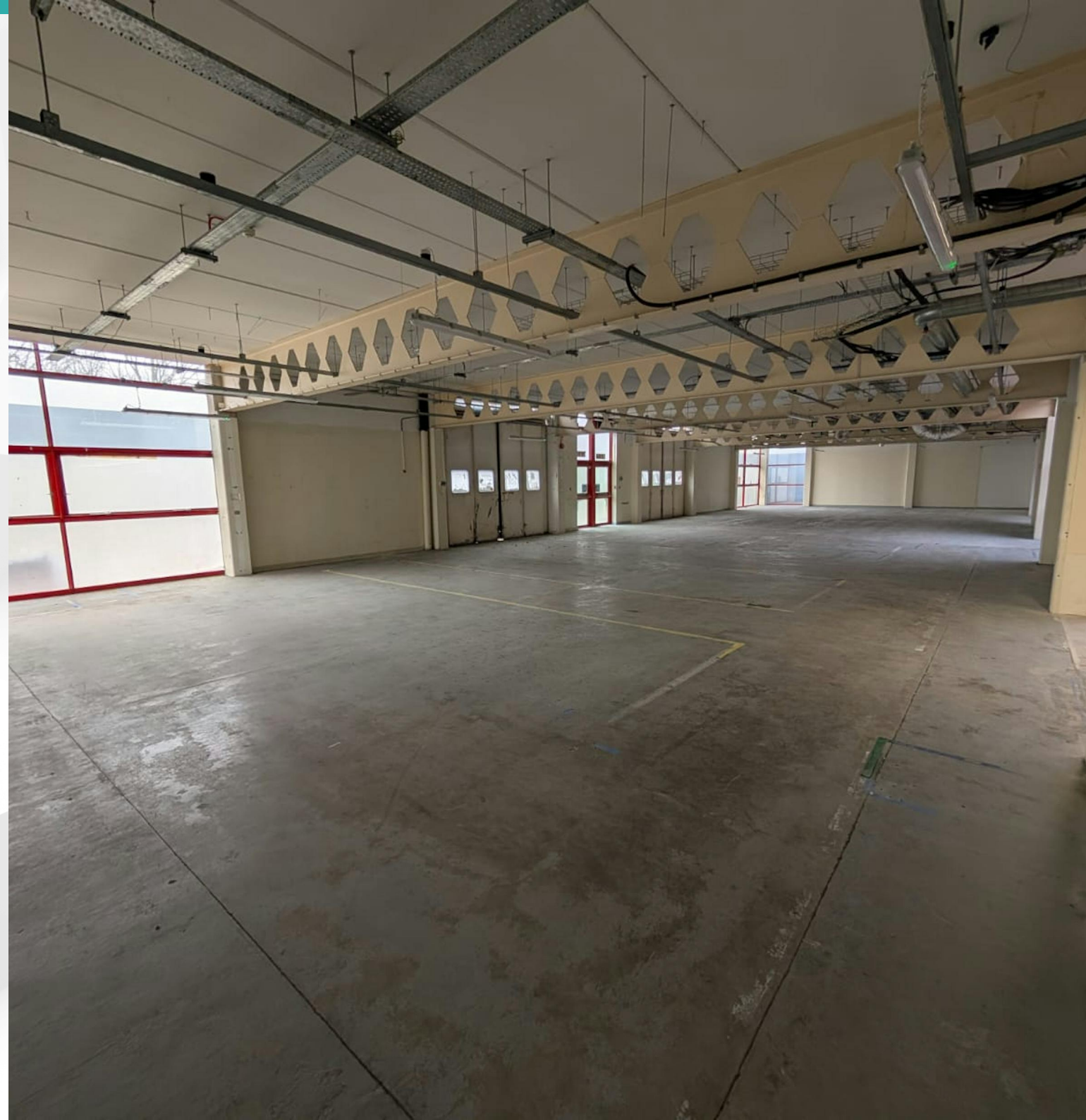


# Summary

## Hybrid Industrial warehouse and office space available TO LET

Available Size	20,690 to 46,410 sq ft
Rent	Rent on application
EPC Rating	Upon enquiry

- Quasi industrial and office space
- Dedicated parking
- Flexible lease terms available
- Household name neighbouring occupiers
- Loading doors
- Secure and private entrance to site

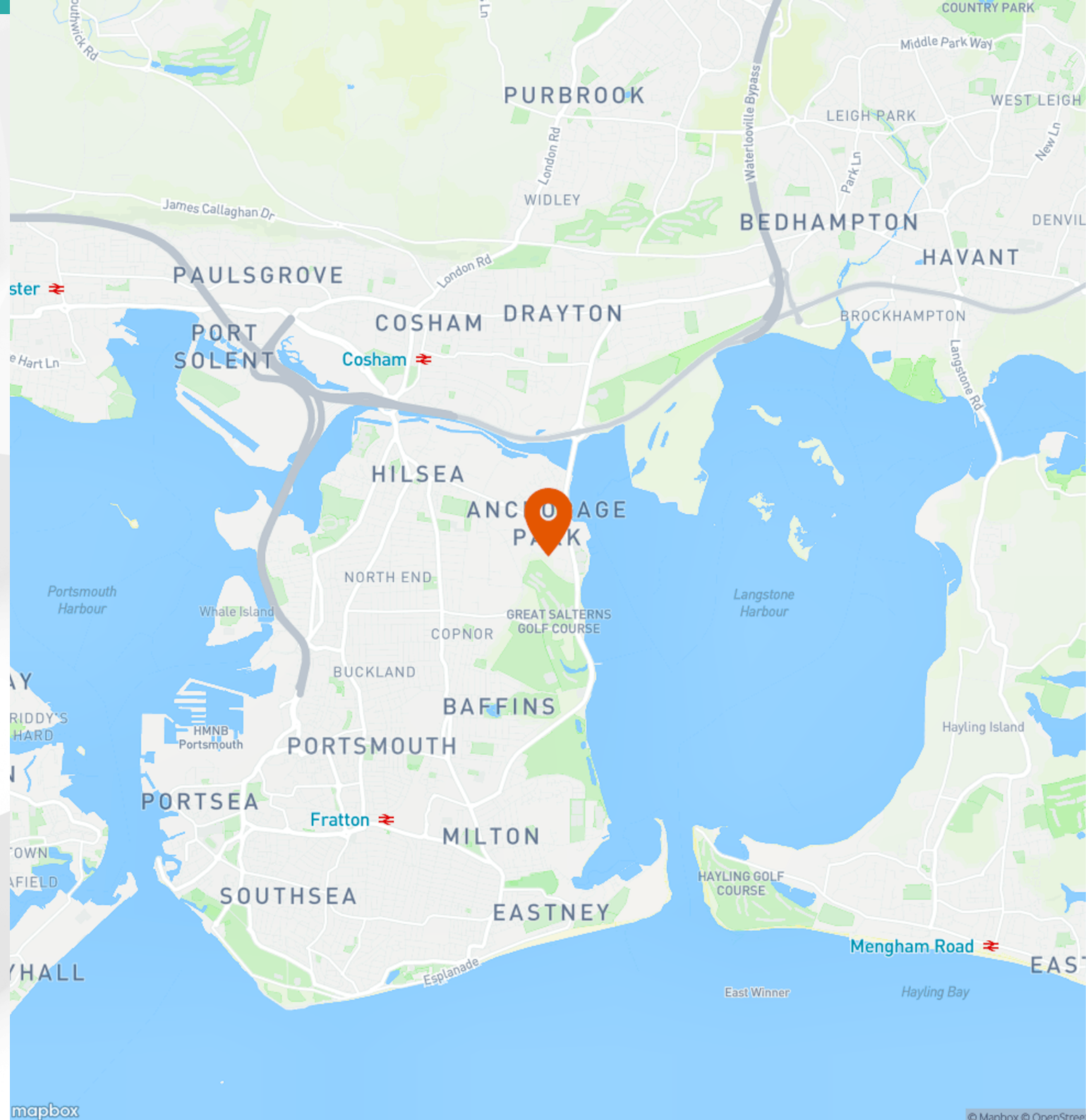


# Location



**316 & 317 Portsmouth Motor Park, Airspeed Road, Portsmouth, PO3 5RF**

316 - 317 Portsmouth Motor Park is located just off Airspeed Road which is directly accessed from Airport Service Road connecting to the Eastern Road, providing easy access into Portsmouth City Centre and South Coast via the A27/ M27.





# Further Details

## Description

The brick built constructed buildings offer an even split of light industrial/manufacturing space and first floor office space around a central courtyard design with good parking. Each building benefits from 3 phase electric, gas supply, WC's and loading doors.

Neighbouring occupiers include Marshall Mercedes, Snows BMW, Harwoods Audi, Peter Cooper Volkswagen and Hendy Renault.

## Accommodation

The accommodation comprises the following areas:

Name	sq ft	sq m	Availability
Unit - 316 Ground Floor	10,357	962.20	Available
Unit - 316 First Floor	10,333	959.97	Available
Unit - 317 Ground Floor	12,870	1,195.66	Available
Unit - 317 First Floor	12,850	1,193.80	Available
<b>Total</b>	<b>46,410</b>	<b>4,311.63</b>	

## Terms

Flexible lease terms available - The buildings are available to let on an individual basis or combined. More details on application.

## Legal costs

Each party to be responsible for their own legal costs incurred in this transaction.

## VAT

Unless otherwise stated terms are strictly exclusive of Value Added Tax and interested parties must satisfy themselves as to the incidence of this tax in the subject case.







## Enquiries & Viewings



**Alex Gauntlett**

[agauntlett@vailwilliams.com](mailto:agauntlett@vailwilliams.com)

07584 657 826



**Russell Mogridge**

[rmogridge@vailwilliams.com](mailto:rmogridge@vailwilliams.com)

07815 737175

02392203200

**Elise Evans (Lambert  
Smith Hampton)**

07703 393120

01489 663 532



**Vail  
Williams**

[View on our website](#)