

5 Featherby Way,

Rochford,
Essex, SS4 1LD



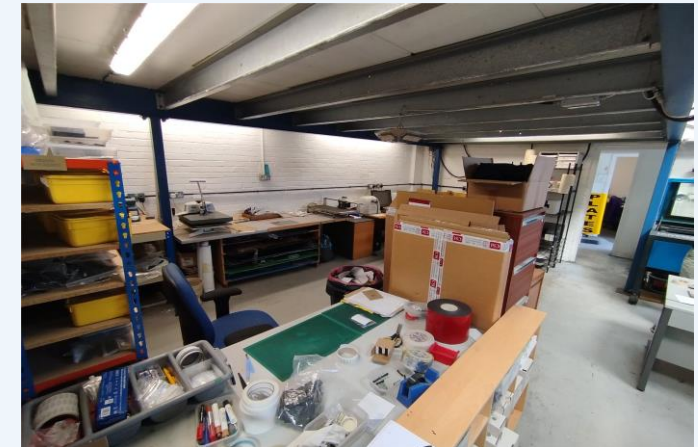
TO LET - PURDEY'S INDUSTRIAL ESTATE. APPROX. 2,585 SQ. FT.



Accommodation: All floor areas are approximate and have been measured on a gross internal basis. Ground Floor Warehouse 2,227 sq.ft. (207.9 sq. m). Ground Floor Office 135 sq.ft. (12.54 sq. m). Mezzanine Level 223sq. ft. (20.71sq. m).

Features:

- Gas Heating
- Available on a New FRI Lease
- Roller Shutter
- 3 Phase Power
- Off Street Parking to the Front
- 233 sq. ft. Mezzanine Level



Energy Performance Certificate: Rating E - 116 Valid until 16th October 2028.

Terms: New FRI Lease £28,000. per annum

Business Rates: The property appears on the 2023 Rating List as Workshop & Premises with an adopted rateable value of £16,000.

Planning: Interested parties are recommended to make their own enquiries with the Local Planning Authority (Rochford District Council 01702 318111) to ensure that any proposed use is in accordance with the current planning policy.

Legal Fees: Each party to bear their own costs.

Viewing: Strictly via prior appointment with the sole selling agents, Dedman Gray Commercial.

For further information or to arrange a viewing contact: Matt Parsons: 01702 311143 E: Matt@dedmangray.co.uk