



56 Bridge Street

Pinner, HA5 3JF

Freehold Shop & Uppers For Sale

1,563 sq ft

(145.21 sq m)

- Excellent freehold opportunity for owner occupiers / investors.
- Pinner Metropolitan Underground Station (0.3 miles).
- First & second floor split level flat with separate access to rear.
- Sold with VP.
- Flat income previously producing £1,430.00 pcm.

Summary

Available Size	1,563 sq ft
Price	£850,000
Business Rates	Upon Enquiry
VAT	Applicable
Legal Fees	Each party to bear their own costs
EPC Rating	Upon enquiry

Description

The building comprises a ground floor retail shop with residential uppers. The retail unit benefits from a predominantly open plan layout with W/C facilities situated in a prime position in Pinner.

The upper parts comprise a split level, three bedroom flat which has recently been renovated, currently vacant, previously generating a rental income of £1,430 per calendar month.

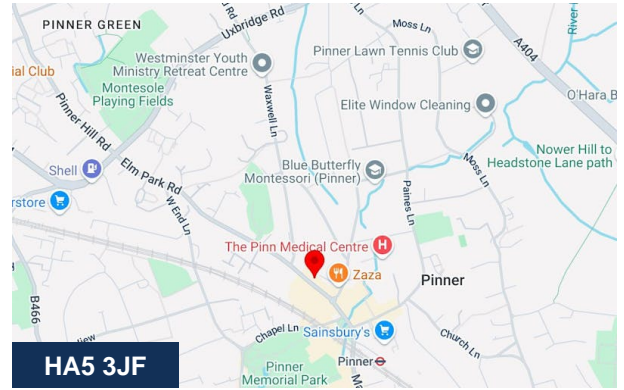
Location

The property is located on the north-east side of Bridge Street, in a prominent position in the centre of Pinner. The premises are close to numerous well-known retailers such as Lidl, Sainsbury's, Marks & Spencer, Starbucks, Café Nero, Zaza's, and WH Smith. Pinner Metropolitan line underground station is within 0.3 miles of the property. Parking is available either by way of on street pay and display bays (1 hour free) or in Chapel Lane & Love Lane public car parks both within 0.2 miles.

Accommodation

The accommodation comprises the following areas:

Name	sq ft	sq m	Availability
Ground - Retail Shop	700	65.03	Available
1st - Flat	424.32	39.42	Available
2nd - Flat	439.47	40.83	Available
Total	1,563.79	145.28	



Viewing & Further Information



George Moriarty

020 8429 9003 | 07522 700 507

george@davidcharles.co.uk



Tom O'Malley

020 8429 9005 | 07522 700 508

tom@davidcharles.co.uk

The above information contained within this email is sent subject to contract. These particulars are for general information only and do not constitute any part of an offer or contract. All statements contained therein are made without responsibility on the part of the vendors or lessors and are not to be relied upon as statement or representation of fact. Intending purchasers or lessees must satisfy themselves, by inspection, or otherwise, as to the correctness of each of the statements of dimensions contained in these particulars. Generated on 06/03/2026



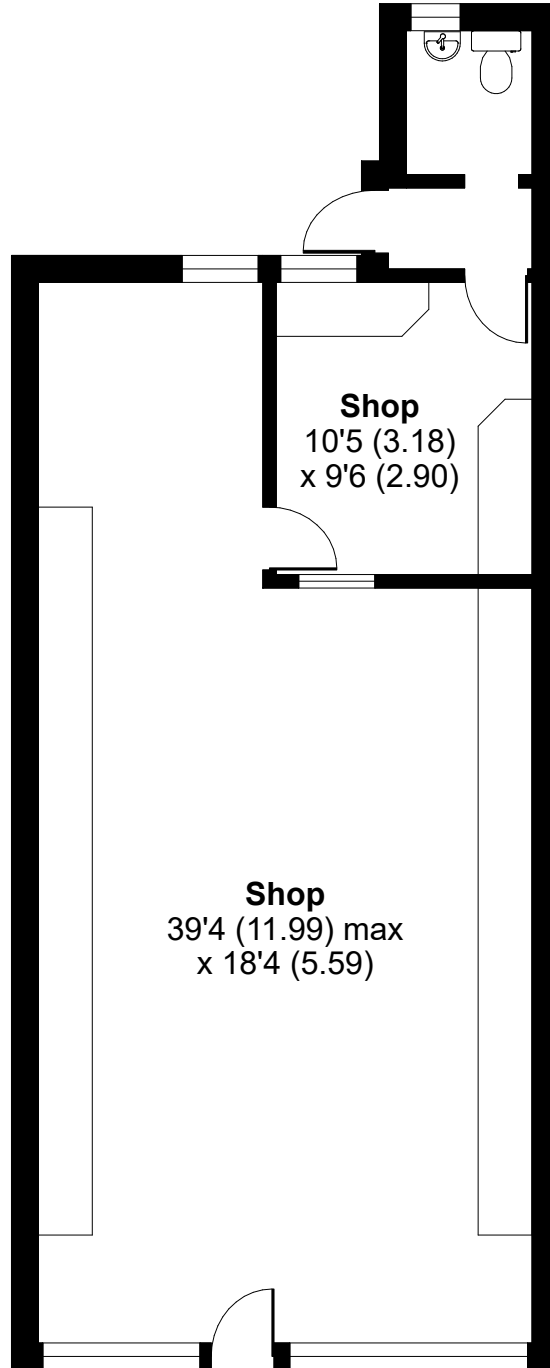
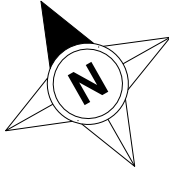




Bridge Street, Pinner, London, HA5

Approximate Area = 767 sq ft / 71.3 sq m

For identification only - Not to scale

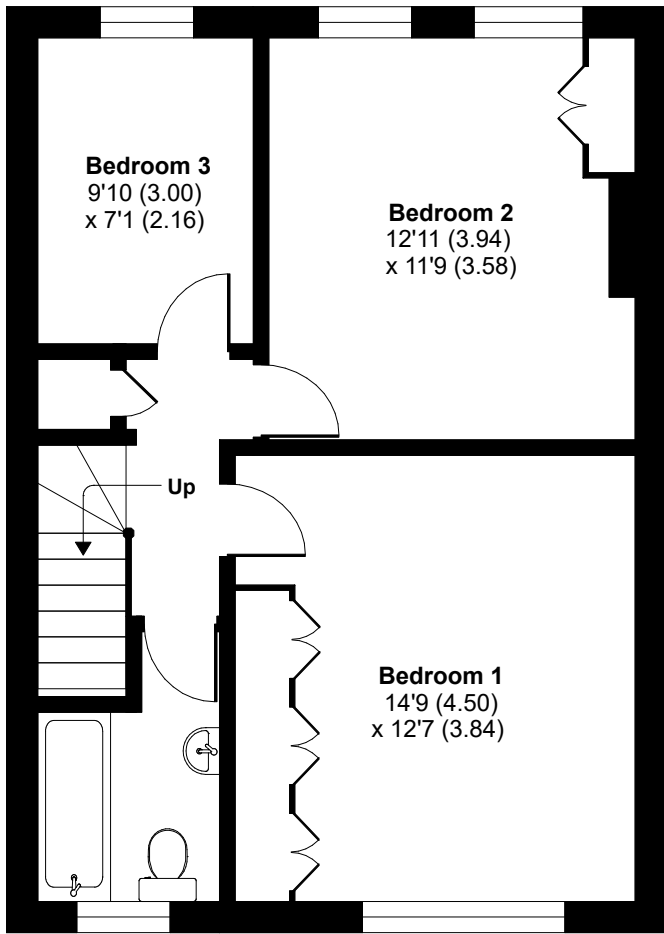
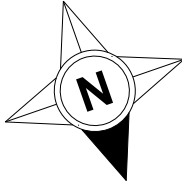


GROUND FLOOR

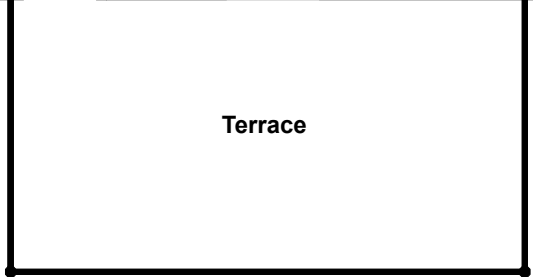
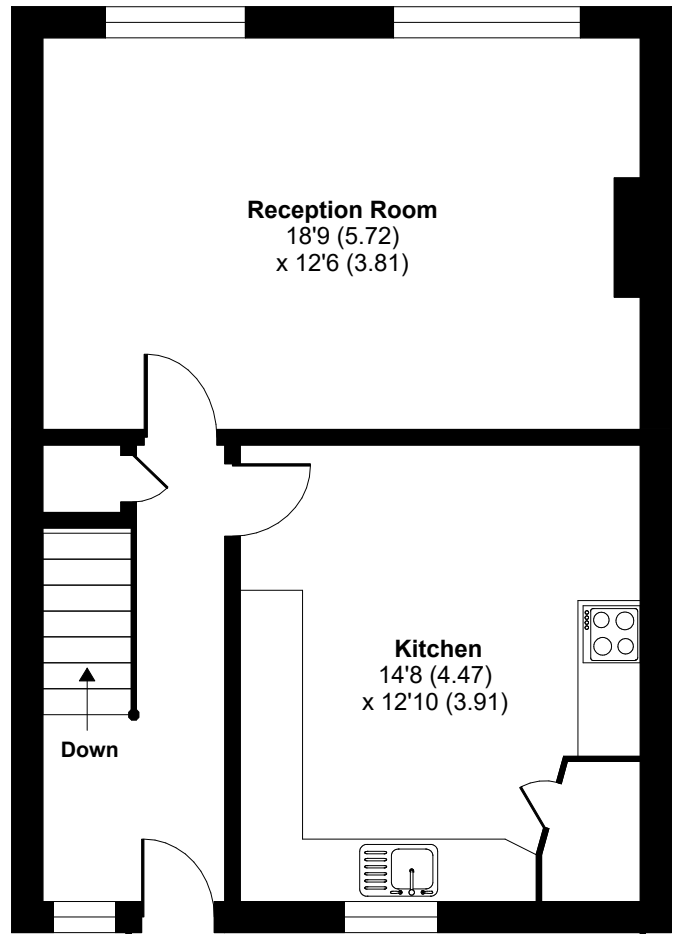
Bridge Street, Pinner, London, HA5

Approximate Area = 1062 sq ft / 98.6 sq m

For identification only - Not to scale



SECOND FLOOR



THIRD FLOOR