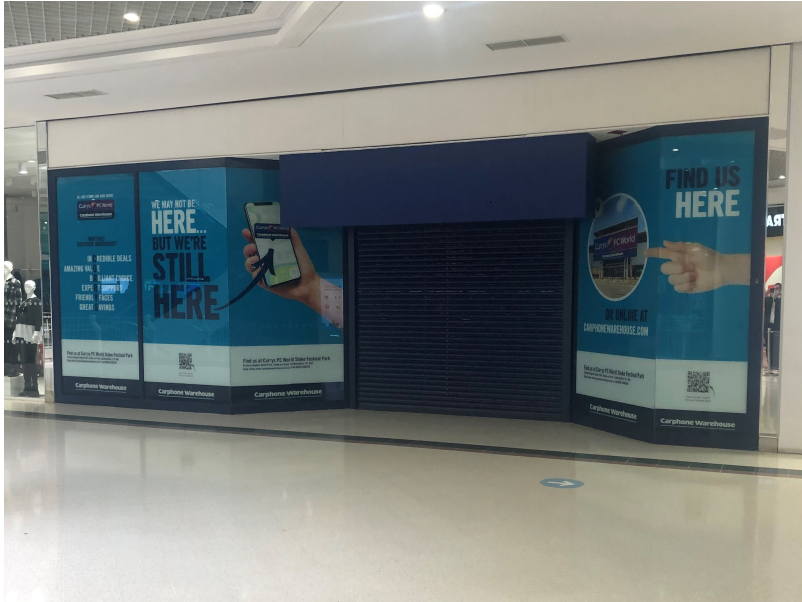


The Potteries Shopping Centre Hanley

Unit 126



SHOP TO LET

LOCATION

The Potteries Shopping Centre provides the focus for the prime retail shopping destination for Stoke on Trent. The scheme comprises a mix of retail and leisure, incorporating 94 units over 636,000 sq ft with 1,200 car parking spaces on site. The Centre is anchored by **Primark, Next, H&M** and **River Island** amongst others.

SITUATION

The unit is located in the Middle Mall with neighbouring occupiers including **Primark, JD Sports, Pandora, Superdry** and **River Island**.

LEASE

The premises are available by way of a new lease for a term to be agreed.

RENT

On Application

LEGAL COSTS

Each party to be responsible for their own legal costs.

EPC

A copy of the Energy Performance Certificate is available on request.

ACCOMMODATION

Ground Floor	1,561 sq ft	145 sq m
First Floor	708 sq ft	66 sq m

BUSINESS RATES & SERVICE CHARGE

Rateable Value (2024)	£52,000
Service Charge (2024)	£50,501

This information is for guidance only. Interested parties are advised to verify figures with the local authority.

VIEWING

For further information or to arrange a viewing, please contact:

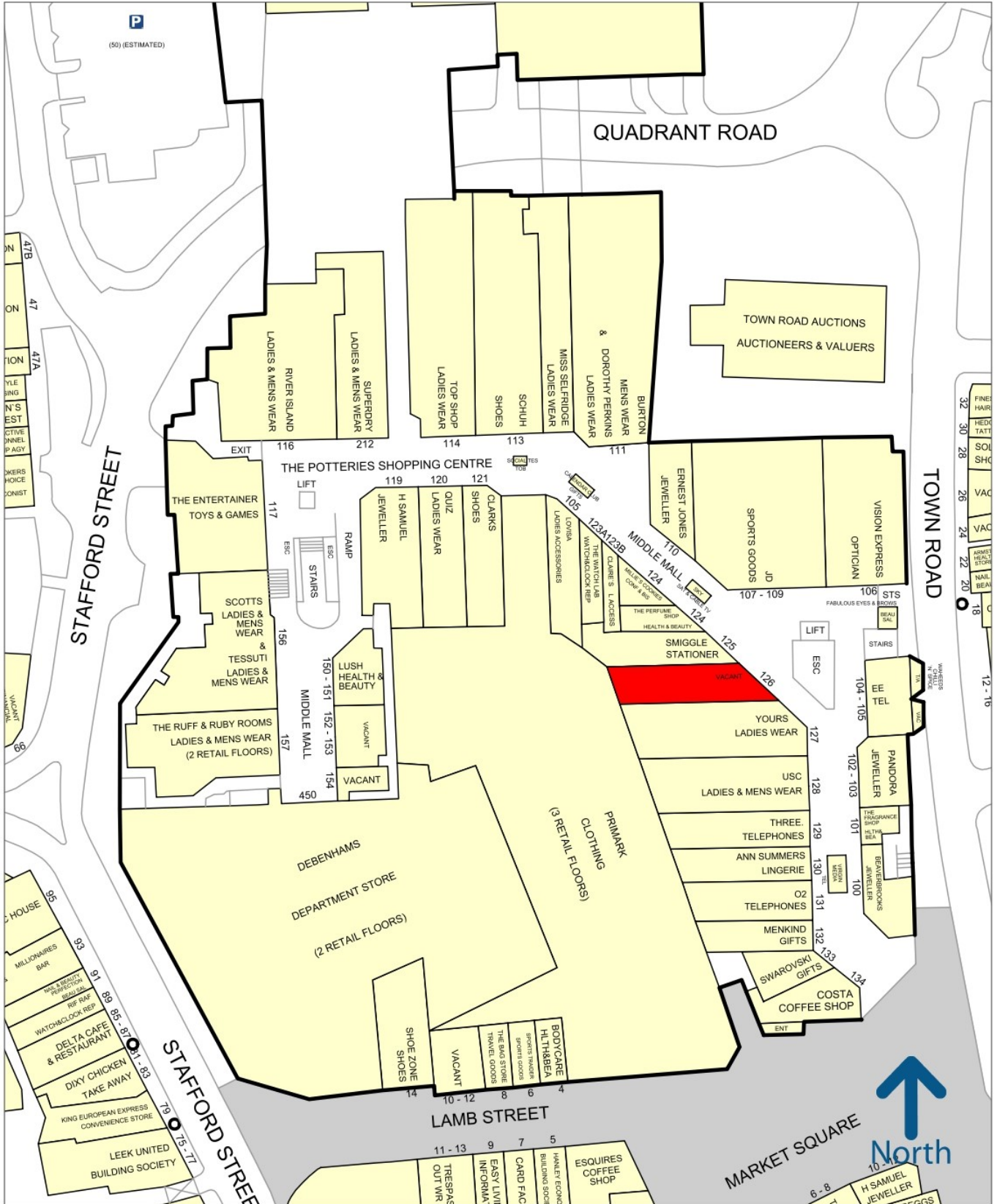
BWD

Richard Bidwell
07747534357
rbidwell@bwdretail.co.uk

or joint agents:

Barker Proudlove

0161 631 2852



50 metres

Experian Goad Plan Created: 02/03/2021
Created By: Bidwell Webber De Pons Ltd



Copyright and confidentiality Experian, 2020. © Crown copyright and database rights 2020. OS 100019885

For more information on our products and services:
www.experian.co.uk/goad | goad.sales@uk.experian.com | 0845 601 6011