

PERFECTLY POSITIONED IN THE HEART OF MAYFAIR

3rd FLOOR OFFICE - TO LET

798 Sq. Ft / 74 Sq. m



LOCATION

16 Curzon Street is positioned on the north side of Curzon Street, directly opposite Shepherds Market. It has excellent transport links with Hyde Park Corner, Green Park, Bond Street and Piccadilly Circus stations within easy walking distance. Perfectly located with exclusive shopping, the finest restaurants and Curzon Mayfair cinema on its doorstep.

DESCRIPTION

The 3rd floor provides entirely self-contained office accommodation, with private WCs and Kitchen, alongside an open plan area and a private meeting room or executives office.

Featuring high quality finishes throughout including wooden flooring, LED lighting, excellent natural light and comfort cooling. The communal areas are finished to a very high standard providing excellent first impressions upon entry and throughout the building. There is an event space on the 1st floor which also is available for private hire at a discounted rate – featuring two large rooms which offers a unique blend of modern design and classic charm, perfect for an art exhibition, networking event or the like.



16 CURZON STREET MAYFAIR, LONDON W1J 5HP

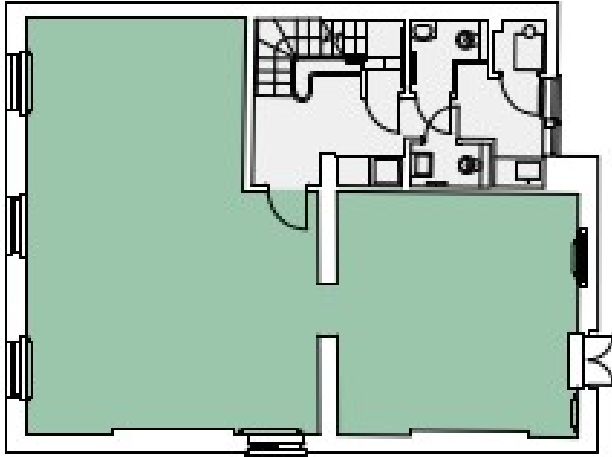




16 CURZON STREET MAYFAIR, LONDON W1J 5HP

ACCOMMODATION

Floor	Sq. Ft	Sq. M
3 rd	798	74



Plan not to scale, for indicative purposes only.

AMENITIES

- High quality self-contained office
- Furniture can be provided – upon request
- Comfort cooling
- Excellent natural light
- Incredible period features
- All-inclusive monthly cost
- Private WC and kitchenette
- Fibre connectivity
- Fitted with private exec office / meeting room
- Event space on 1st floor for hire at a discounted rate

TERMS

A new sub-lease for a term to be agreed.

ALL IN MONTHLY COST

£9,975 per month – inclusive of rent, business rates, service charge, internet, utilities and cleaning.

LEGAL COSTS

Each party is to be responsible for its own legal costs incurred in this transaction.

POSSESSION

Available Immediately.

Viewings by arrangement through sole agents Noble Harris:-

Matthew Noble
M: 07980 991 214
E: mnoable@nobleharris.co.uk

Carl Dobrin
M: 07545 077 959
E: cdobrin@nobleharris.co.uk

MISREPRESENTATION ACT | COPYRIGHT | DISCLAIMER

The Noble Harris Partnership, for themselves and for the vendors of this property, whose agents they are, give notice that (1) the particulars and any further information communicated by any means to potential purchasers of the property described in the particulars, or their advisers, in connection with the possible sale of the property are provided solely for the purpose of assisting potential purchasers in deciding whether they wish to proceed with further investigation of the property and do not constitute either the whole or any part of an invitation, offer or contract for sale of the property; (2) all descriptions, dimensions, references to condition and necessary permissions for use and occupation and other details are given in good faith and are believed to be correct as at the date of the particulars (or the date of the relevant information if earlier); However, potential purchasers are not entitled to rely on them as statements or representations of fact but should satisfy themselves by research, enquiries, surveys and inspections or otherwise with regard to the accuracy of such details. No responsibility or liability is or will be accepted by Noble Harris, the vendor(s) of the property or any of their respective subsidiaries, affiliates, directors, officers, representatives, employees, advisors, or agents for any loss or damage suffered by any party, resulting from reliance on the particulars or any other information communicated by any means to that party, or its advisers, in connection with the possible sale of the property. No person in the employment of Noble Harris or the vendor(s) has authority to make or give any representation or warranty, express or implied, in relation to the property. References to Noble Harris include any joint agents acting with Noble Harris.