



BELMONT ROAD, UXBRIDGE UB8 1HE



THE BUILDING

Belmont is a contemporary and thriving headquarters office building in the heart of Uxbridge, and home to a host of exciting businesses including giffgaff, Optical Express, Orega and PFU Fujitsu.





A WARM WELCOME

High quality finishes, bespoke meeting area and artwork create an impressive introduction to the building.



Offering some of the largest floor plates of any office in the Thames Valley, and with floor to ceiling windows, there is a wonderful sense of open space at Belmont.



BELMONT CAFÉ

Our café offers a range of artisan coffee and freshly prepared hot and cold food and is for the exclusive use of our occupiers.



With its choice of refreshments, free wifi and USB ports at every table, Belmont Café provides the perfect environment for informal meetings, lunch with colleagues or just a break from work.



Two roof terraces offer outstanding views and great spaces for staff or client entertaining. There is also a terrace on the ground floor.



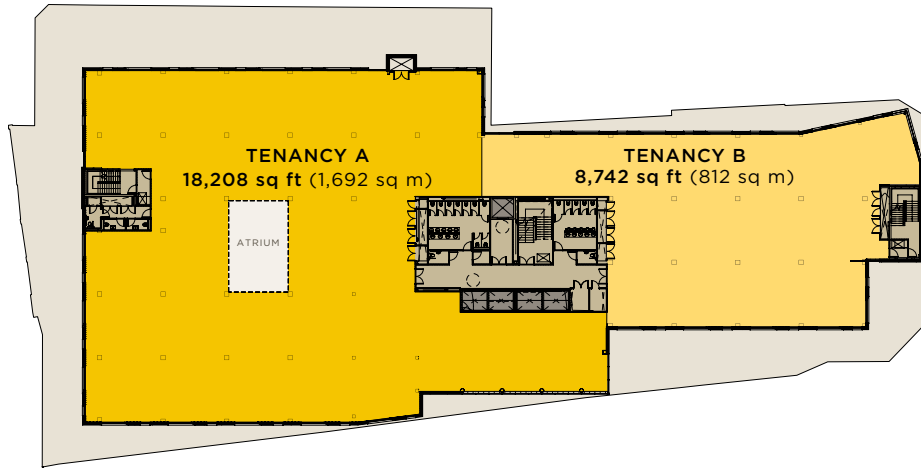
SCHEDULE OF AREAS

Fourth Floor	Let to PFU Fujitsu Let to Bramham Properties	
Third Floor	Let to Orega	
Second Floor	26,950 sq ft	2,504 sq m
First Floor	26,951 sq ft	2,504 sq m
Ground Floor	Let to giffgaff	
Street Level	Let to Optical Express and Belmont Café	
CURRENT AVAILABILITY	56,901 sq ft	5,008 sq m
Car Parking	170 parking spaces	1:751 sq ft

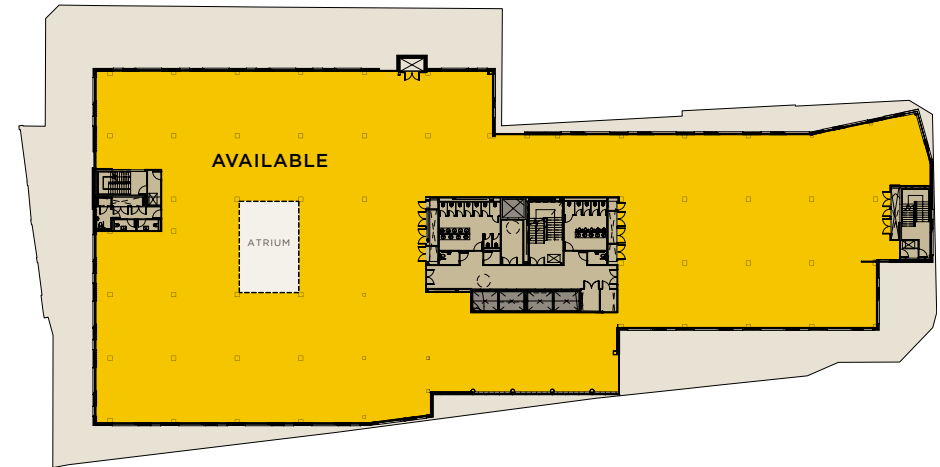
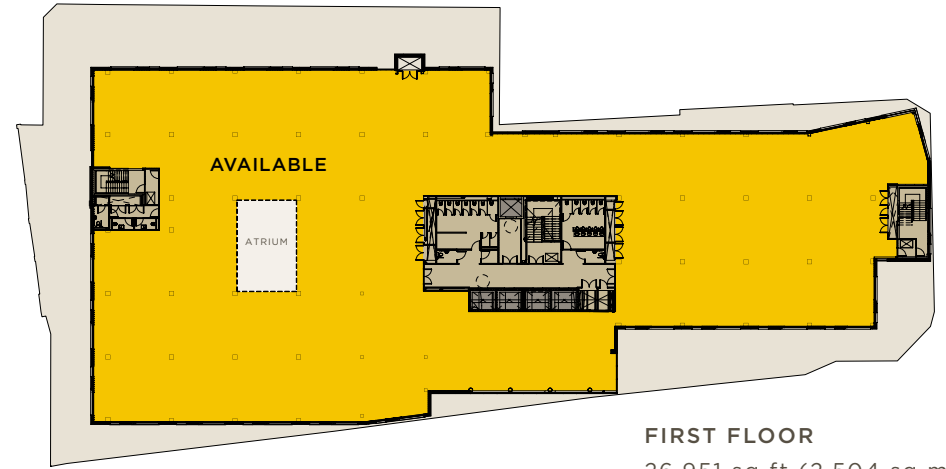
Approximate IPMS3 Areas



FLOOR PLANS



POTENTIAL TENANCY SPLIT



- Office
- Parking
- Cycle Facilities
- Plant
- Terrace
- Core
- Lifts



Floor plans not to scale - for indicative purposes only



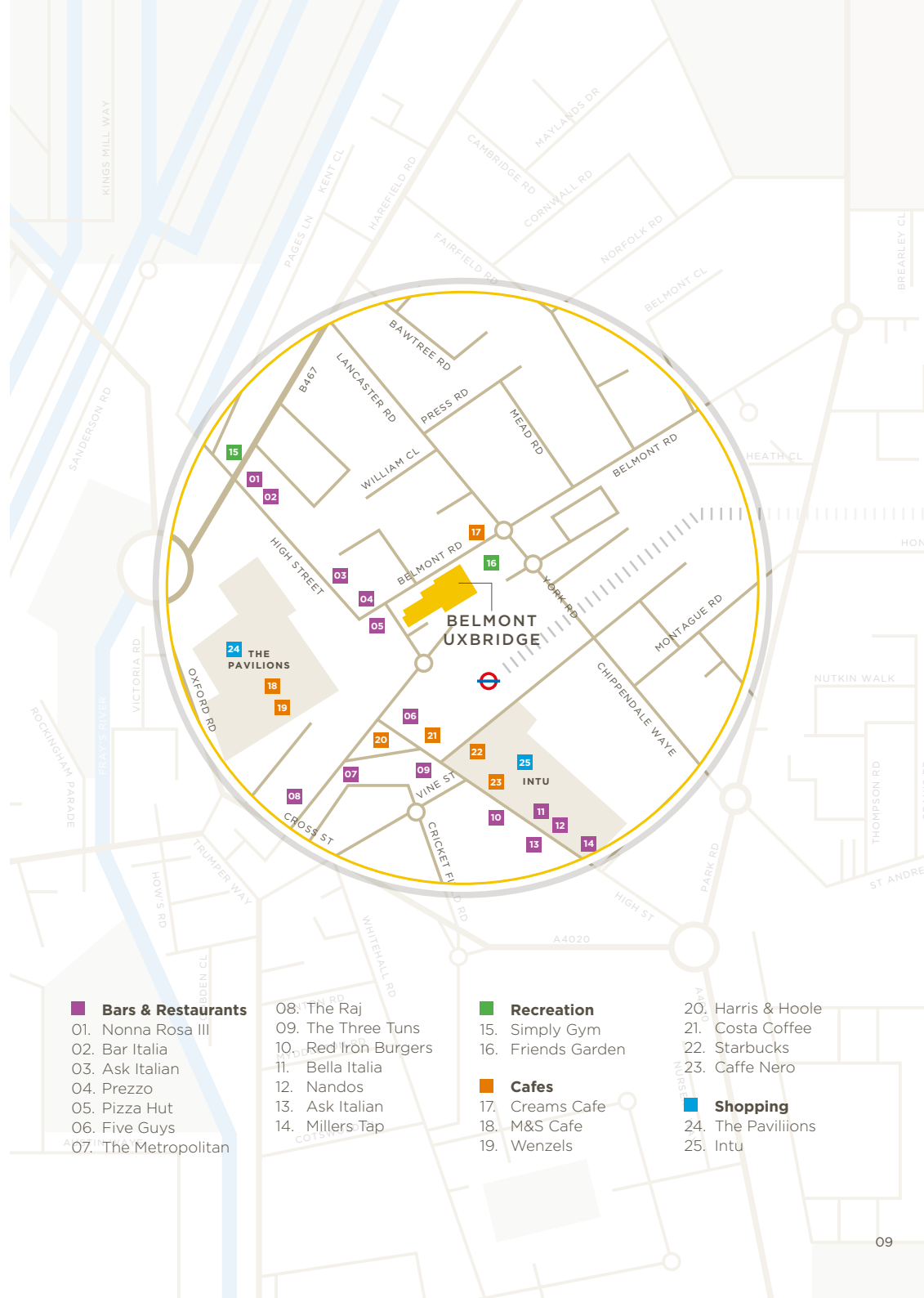
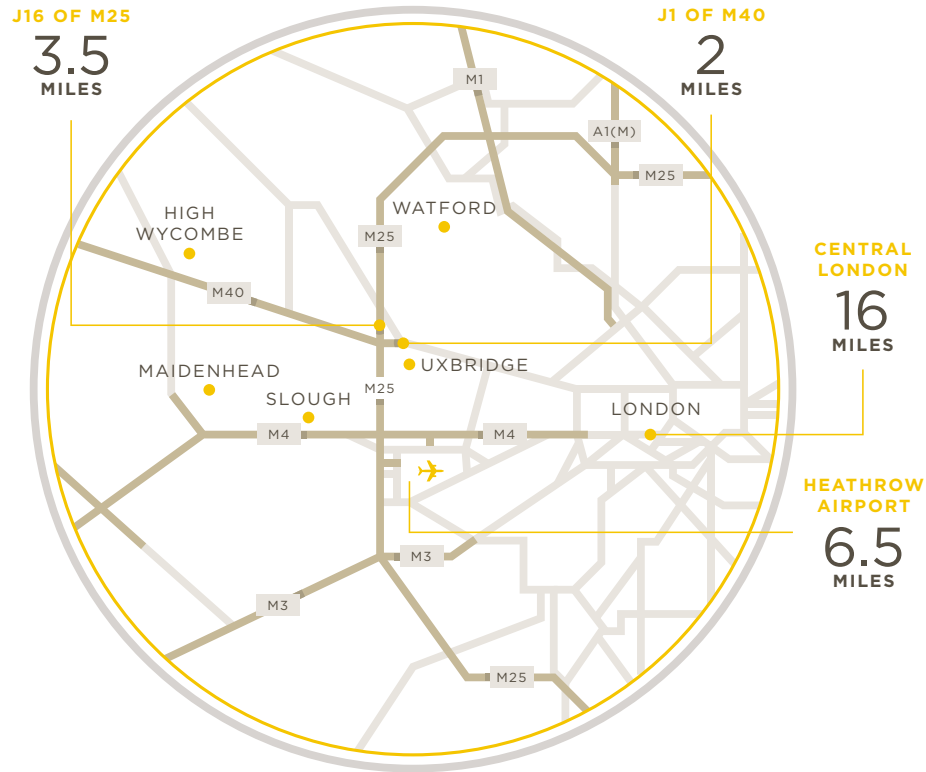
THE LOCATION

There are over 100 shops in Uxbridge town centre offering a mixture of small independent retailers and well known high street brands.



BELMONT IS SITUATED IN THE HEART OF UXBRIDGE, A VIBRANT TOWN CENTRE WITH A HOST OF RETAIL & LEISURE OPTIONS RIGHT ON YOUR DOORSTEP.





Belmont is located adjacent to Uxbridge underground station which is served by the Metropolitan and Piccadilly lines. Connecting directly to the heart of London in under 45 minutes.

All buses run from the adjacent bus station providing access to Heathrow and the surrounding area.

- **Bars & Restaurants**
- 01. Nonna Rosa III
- 02. Bar Italia
- 03. Ask Italian
- 04. Prezzo
- 05. Pizza Hut
- 06. Five Guys
- 07. The Metropolitan
- 08. The Raj
- 09. The Three Tuns
- 10. Red Iron Burgers
- 11. Bella Italia
- 12. Nandos
- 13. Ask Italian
- 14. Millers Tap
- **Recreation**
- 15. Simply Gym
- 16. Friends Garden
- **Cafes**
- 17. Creams Cafe
- 18. M&S Cafe
- 19. Wenzels
- **Shopping**
- 20. Harris & Hoole
- 21. Costa Coffee
- 22. Starbucks
- 23. Caffe Nero
- 24. The Pavilions
- 25. Intu



BELMONT-UXBRIDGE.COM

All enquiries



Willem Janssen
07793 683838
willem.janssen@colliers.com

Frederick Stork
07729 105339
frederick.stork@colliers.com



Andy Tucker
020 3130 6402
07721 260545
atucker@hanovergreen.co.uk

Richard Zoers
020 3130 6414
07730 567607
rzoers@hanovergreen.co.uk

Owner



Cushman & Wakefield LLP and Colliers International on its own behalf and for vendors or lessors of this property, whose agent it is, gives notice that: 1. The particulars are produced in good faith, but are a general guide only and do not constitute any part of a contract. 2. No person in the employment of the agent(s) has any authority to make or give any representation or warranty whatsoever in relation to this property. 3. The property is offered subject to contract and unless otherwise stated all rents are quoted exclusive of VAT. 4. Nothing in these particulars should be deemed a statement that the property is in good condition, or that any services or facilities are in working order. 5. Unless otherwise stated, no investigations have been made regarding pollution, or potential land, air or water contamination. Interested parties are advised to carry out their own investigations if required.