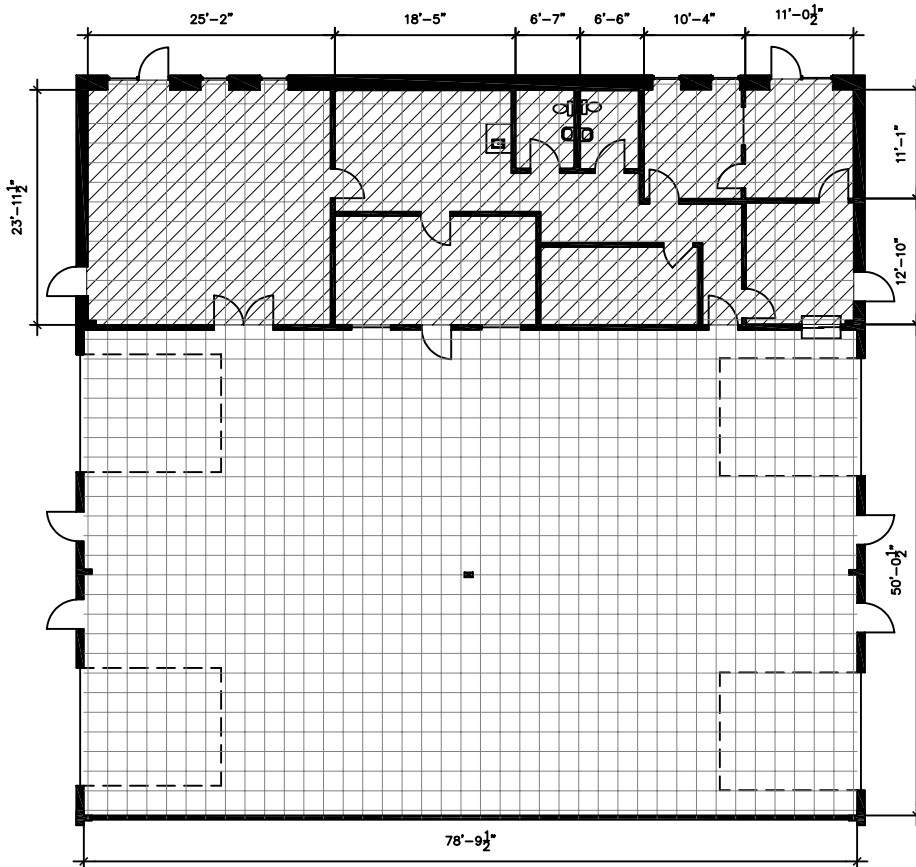
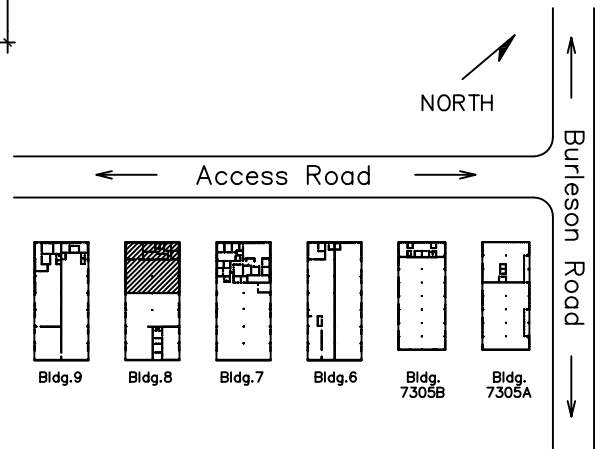


Office SF = 2,083
 Warehouse SF = 3,997
 Total RSF = 6,080



NOTE:
 Overlying grid is 2' x 2'
 Not to scale.

 Air Conditioned Area



PARK LAYOUT

<p>Drawing for: L.H. LAYNE COMPANY 404 W. Powell, Ste. 202 Austin, Texas 78753 Ph: 252-9900 Fax: 252-9902</p>	<p>SUITE 801/806 OMNI BUSINESS PARK 7303 Burleson Rd. RENTABLE AREA: 6,080 S.F.</p>	<p>THE MEASUREMENTS AND FLOOR PLANS ARE ACCURATE TO WITHIN 2% INTERIOR WALLS AND DEMISING WALLS ARE ASSUMED TO BE 5" THICK. Project No.: 20306.03 Rev. Date: Oct. 22, 2009 ©2009</p>	<p>†DIMENSIONS† FLOOR PLANS www.dimensionsfloorplans.com Austin, Texas Ph: 342-0114 Fax: 342-1965</p>
--	---	---	---