

GORDON HOUSE

Leicester Street
Southport PR9 0ER

LAST
REMAINING SUITES
AVAILABLE
623-1,416 SQ FT
WITH ON SITE CAR PARKING

GORDON HOUSE

DESCRIPTION +

WELL LOCATED TOWN CENTRE OFFICE BUILDING AVAILABLE ON FLEXIBLE LEASE TERMS.

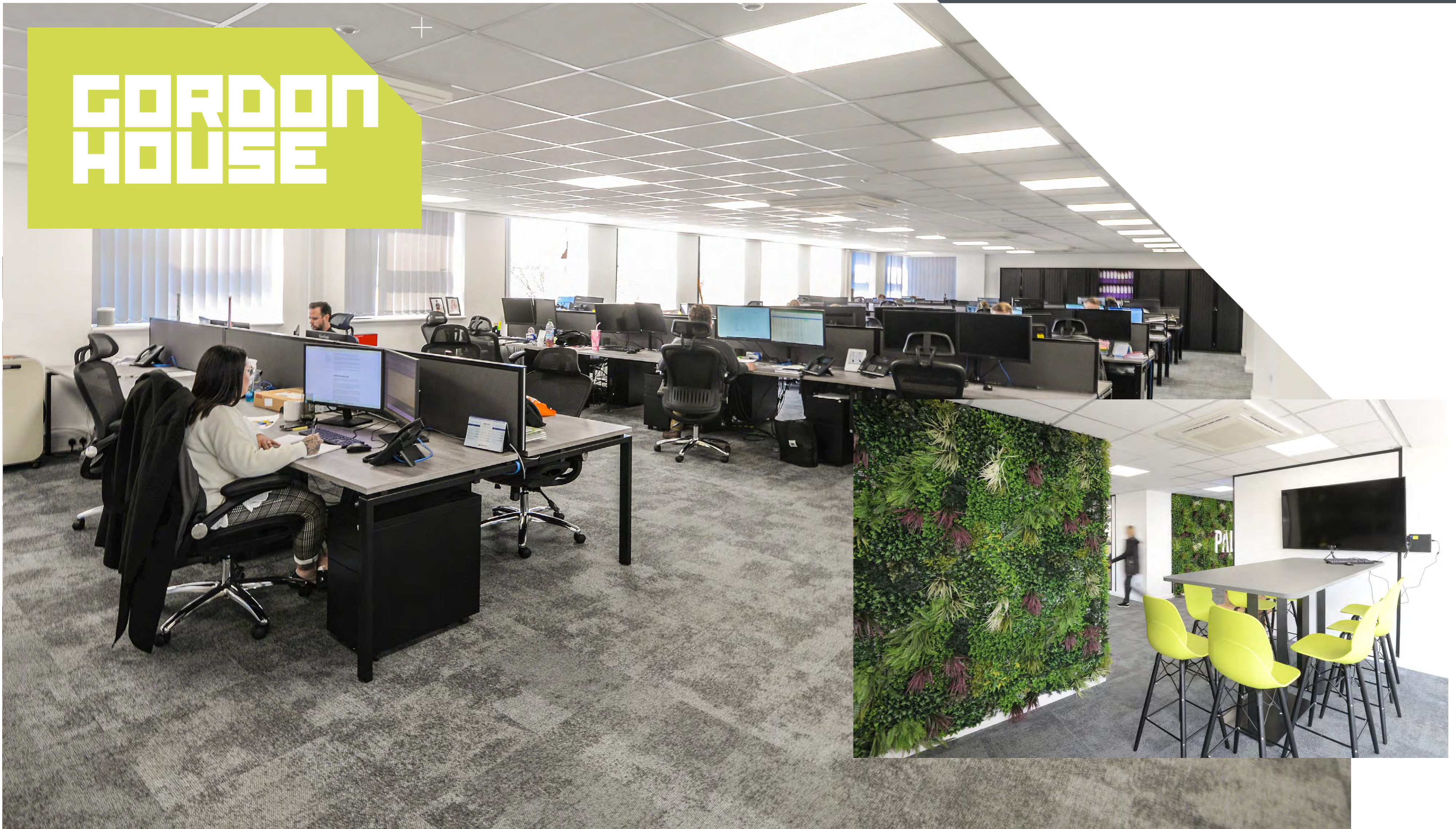
Gordon House is a high profile office building well located in the centre of Southport, providing a mix of office suites benefitting from excellent natural light and on site car parking.

- Refurbished Offices Suites Finished to High Standard
- Secure On Site Parking
- Adjacent to Lord Street & All Amenities
- Lift to all floors
- DDA access
- Intercom access system
- Cycle storage



* Images show existing tenant fit-out

GORDON HOUSE



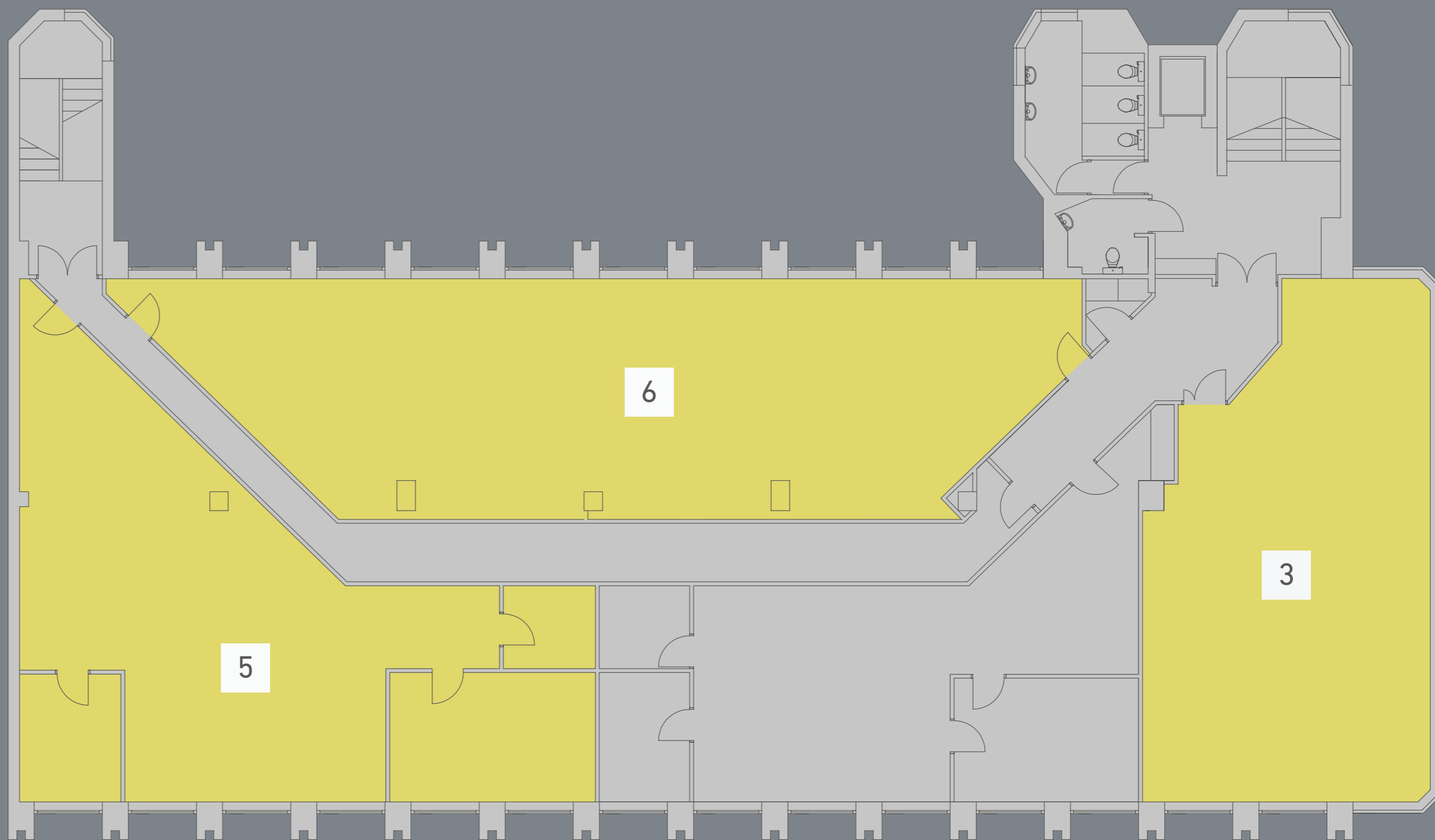


GORDON HOUSE

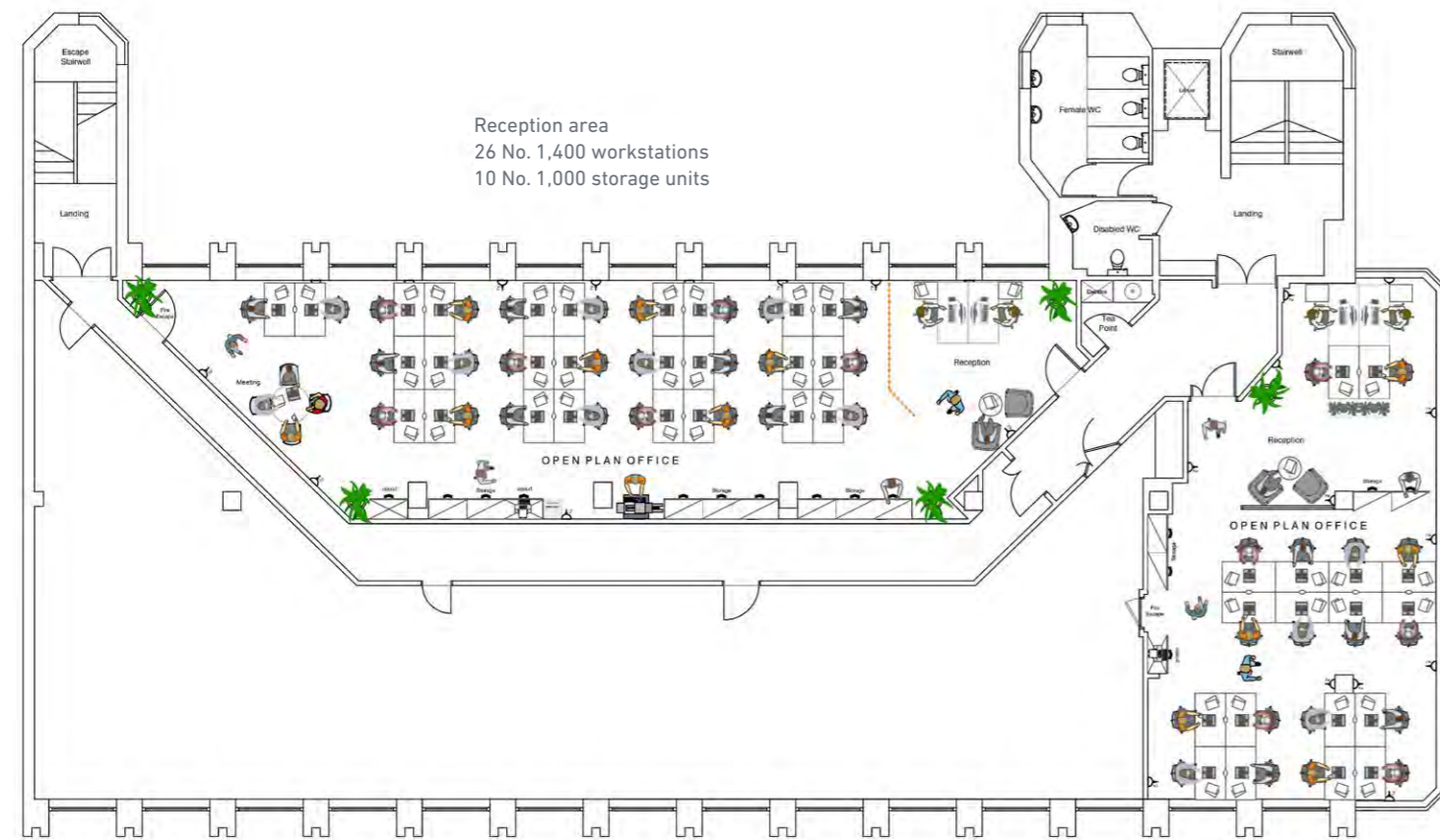
FIRST FLOOR
REFURBISHED
OFFICES

AVAILABILITY +

SUITE	SQ FT	SQ M
3	990	92.0
5	1,195	111.0
6 (can sub-divide)	1,416	131.5

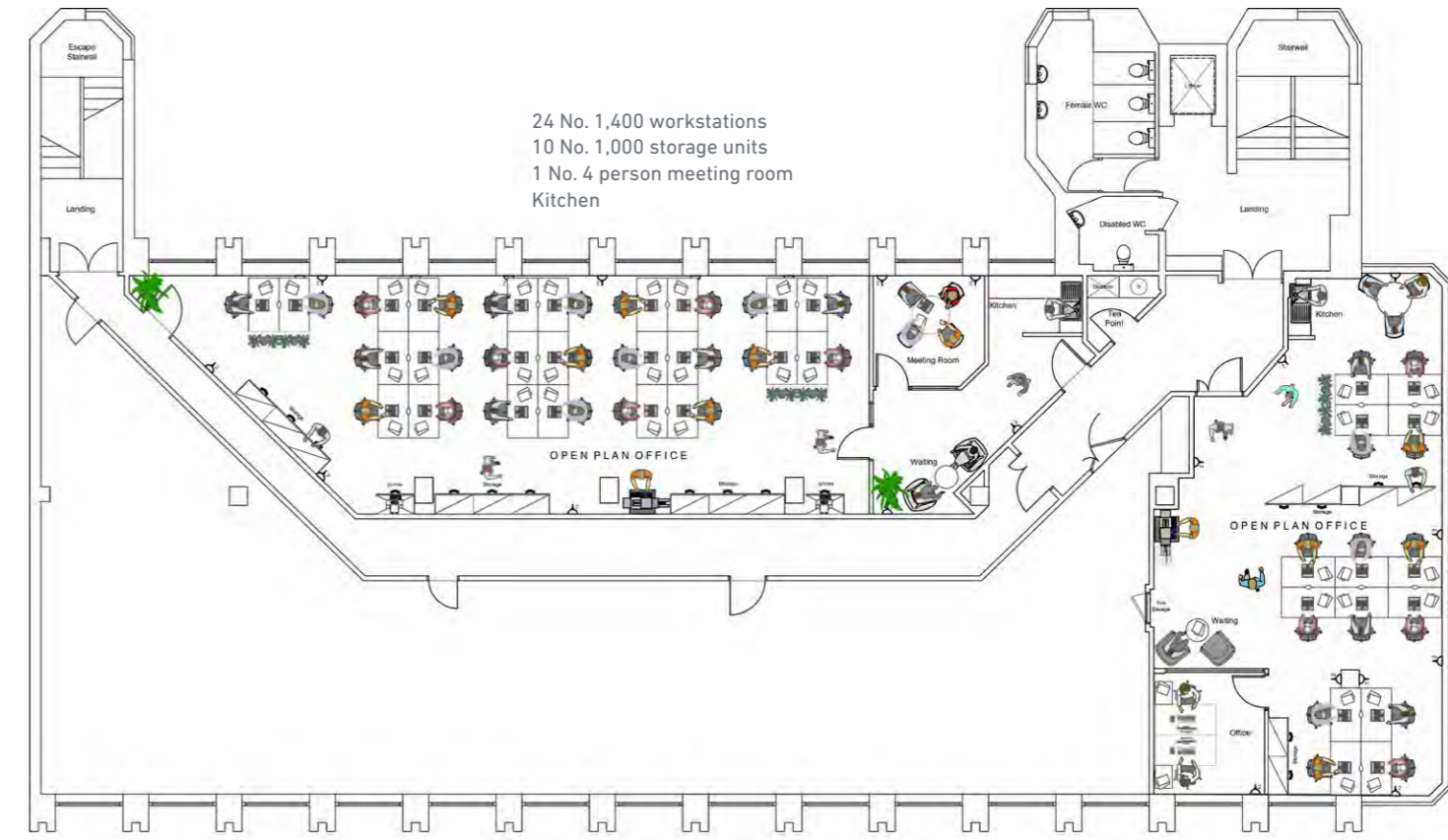


PROPOSED FLOOR LAYOUT OPTIONS +



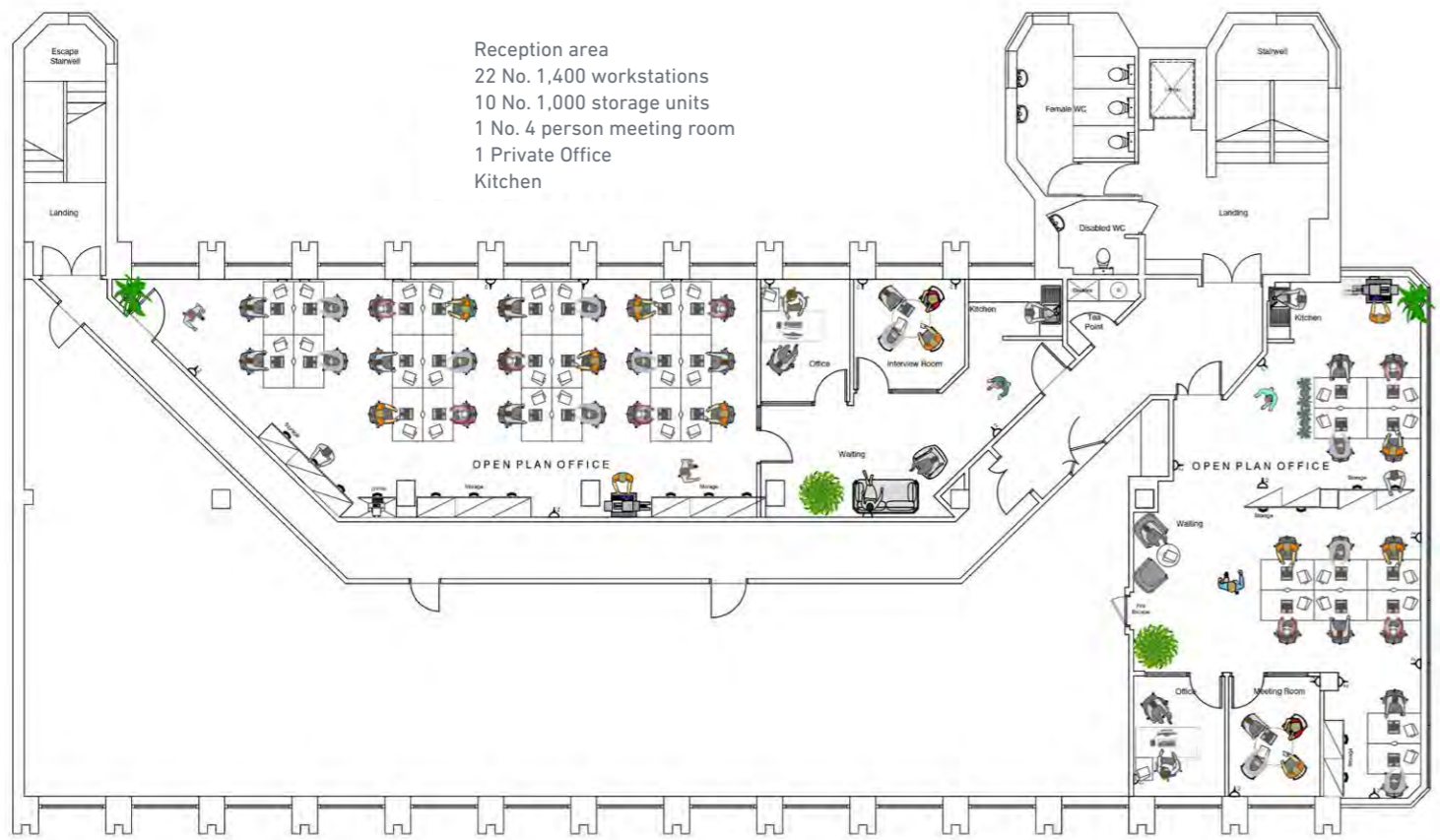
Option 1

20 No. 1,400 workstations
5 No. 1,000 storage units



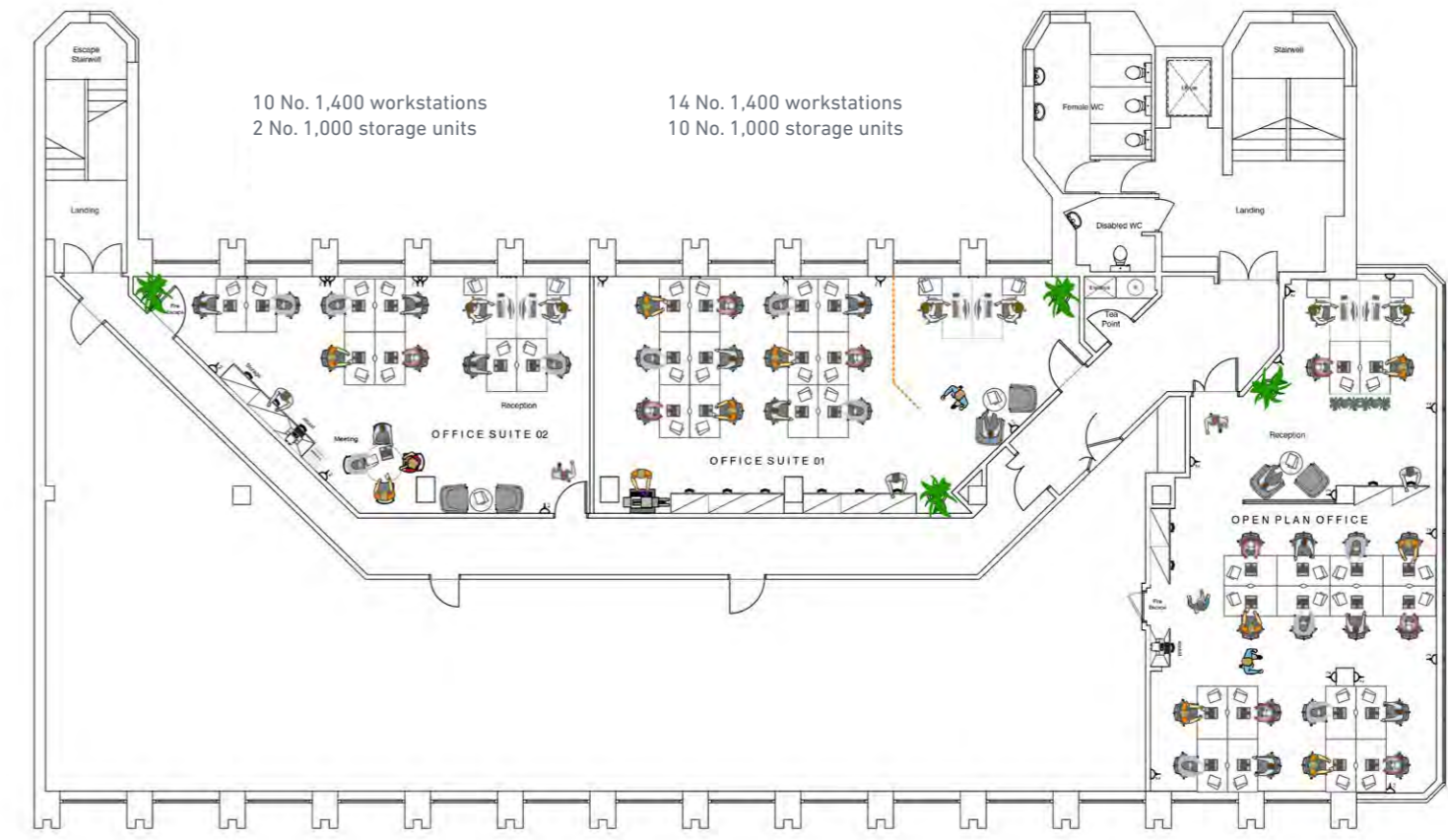
Option 2

14 No. 1,400 workstations
5 No. 1,000 storage units
1 Private Office
Kitchen



Option 3

12 No. 1,400 workstations
6 No. 1,000 storage units
1 No. 4 person meeting room
1 Private office
Kitchen



Option 4

20 No. 1,400 workstations
5 No. 1,000 storage units

GORDON HOUSE

LOCATION +

THE PROPERTY IS SITUATED AT THE JUNCTION OF LEICESTER STREET AND ALBERT ROAD IN SOUTHPORT TOWN CENTRE

It is located at the northerly end of Lord Street, adjacent to all amenities and benefits from excellent public transport links with Mersey Rail at Southport Station, located within 0.5 miles of the property.



SAT NAV PR9 0ER +

GORDON HOUSE

FURTHER INFORMATION +

+ TERMS

The property is available by way of a new lease for a term to be agreed. Rent on application.

+ EPC

An energy performance certificate is available on request.

+ CONTACT

For further information or to arrange a viewing please contact the letting agents, Colliers or Fitton Estates.

Conor Walmsley
+44 7716 406211
conor.walmsley@colliers.com



Cerys Davies
01704 500345
cerys@fittonestates.com



Misrepresentation Act 1967. These details are provided only as a general guide to what is being offered subject to contract and subject to lease being available and are not intended to be construed as containing any representation of fact upon which any interested party is entitled to rely. Other than this general guide neither we nor any person in our employ has any authority to make, give or imply any representation or warranty whatsoever relating to the properties in these details. Designed and produced by Richard Barber & Co. 0161 833 0555. richardbarber.co.uk. August 2024