

alder king

PROPERTY CONSULTANTS

TO LET

Units 12 & 13 Coln Park, Andoversford Industrial Estate, Cheltenham, GL54 4HJ



Approximately 5,387 sq ft (500.56 sq m)

- Available on a new FRI Lease
- Popular Business Location
- Adjacent A40 Trunk Road

Location

The property is situated within the popular Coln Park, forming part of Andoversford Industrial Estate approximately 6 miles to the east of Cheltenham.

Coln Park is an attractive modern development and provides a mixture of trade, logistics, industrial and warehouse units.

The site is adjacent to the main A40 trunk road connecting Cheltenham, Oxford and London. The A436 provides access to Junction 11a of the M5 Motorway approximately 10 miles to the west with Gloucester approximately 14 miles west.

**M5 Motorway
Junction 11A**



**10 miles
west**

Gloucester

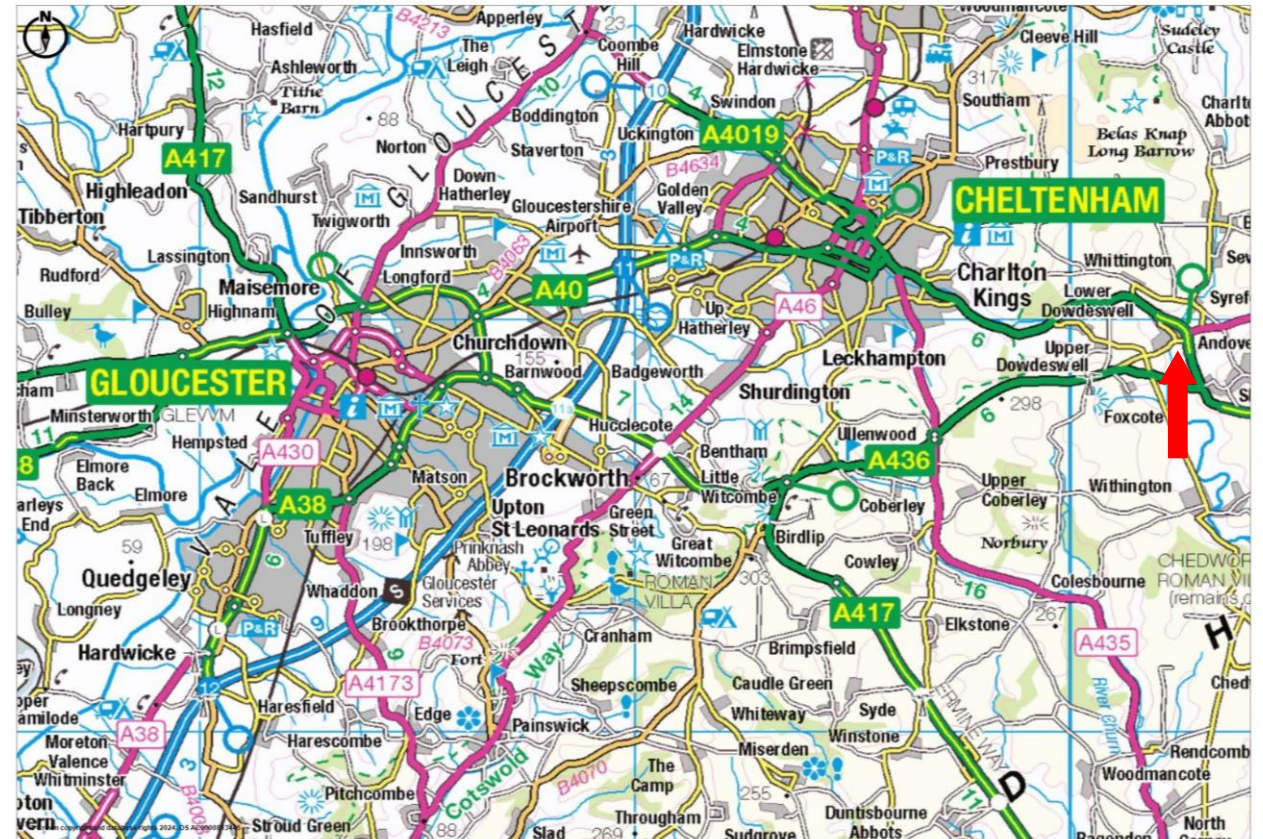


**14 miles
west**

Cheltenham



**6 miles
west**



Promap © Crown Copyright and database rights 2024. OS AC0000813445
LANDMARK INFORMATION Plotted Scale - 1:150000. Paper Size - A4

Accommodation

Description

The premises comprise an end terrace building of steel portal frame construction with part brickwork and clad elevations, beneath a pitched plastic coated steel sheet insulated roof incorporating translucent light panels. The construction provides an internal height of approximately 5.6 metres at the frame haunch.

Two pedestrian entrance doors within the front elevation provides access to ground floor reception, office, WCs and kitchenette. The first floor mezzanine comprises open plan space which may be suitable for storage/ office use.

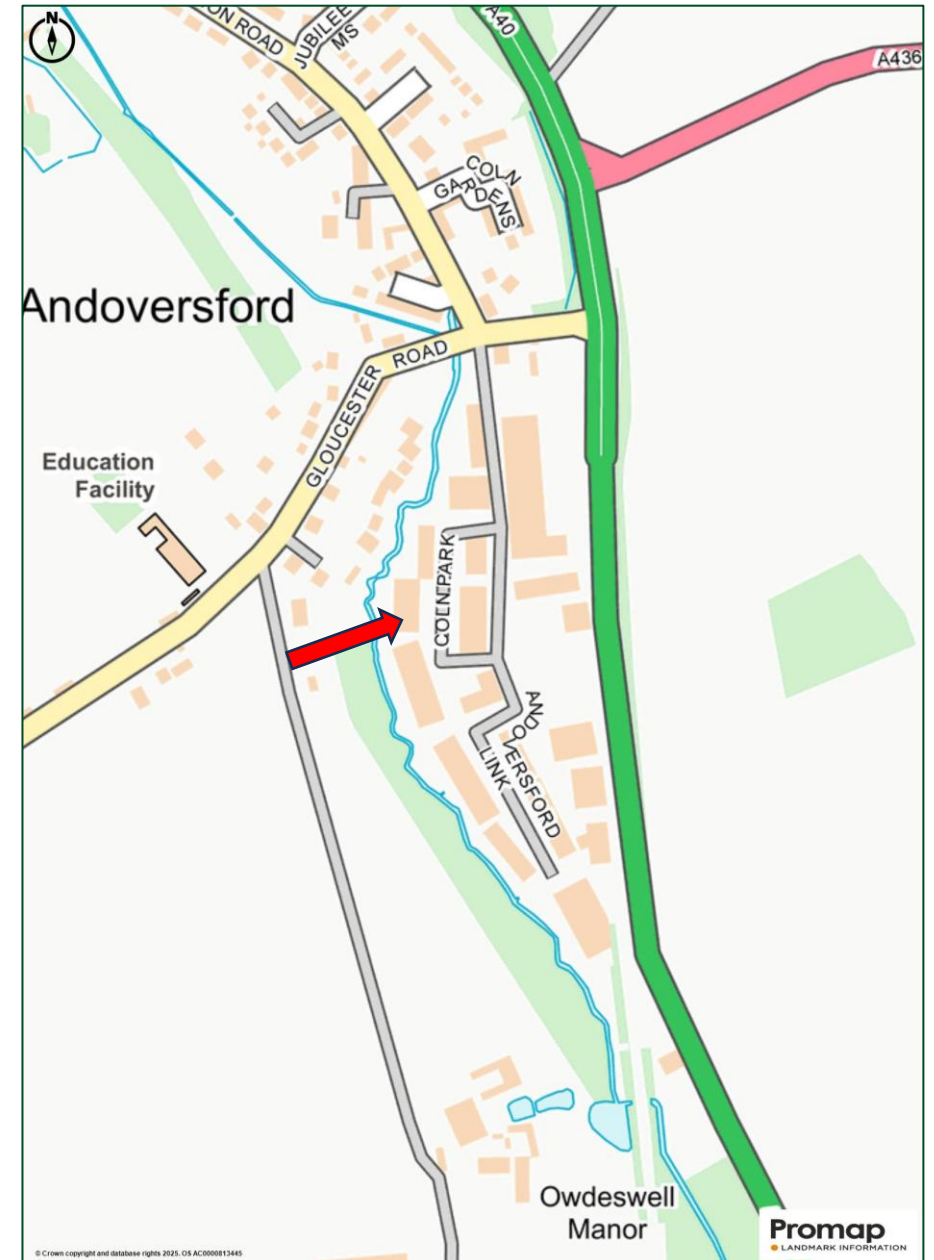
Vehicular access is by way of two sectional overhead loading doors. Car parking and loading is provided to the front of the property.

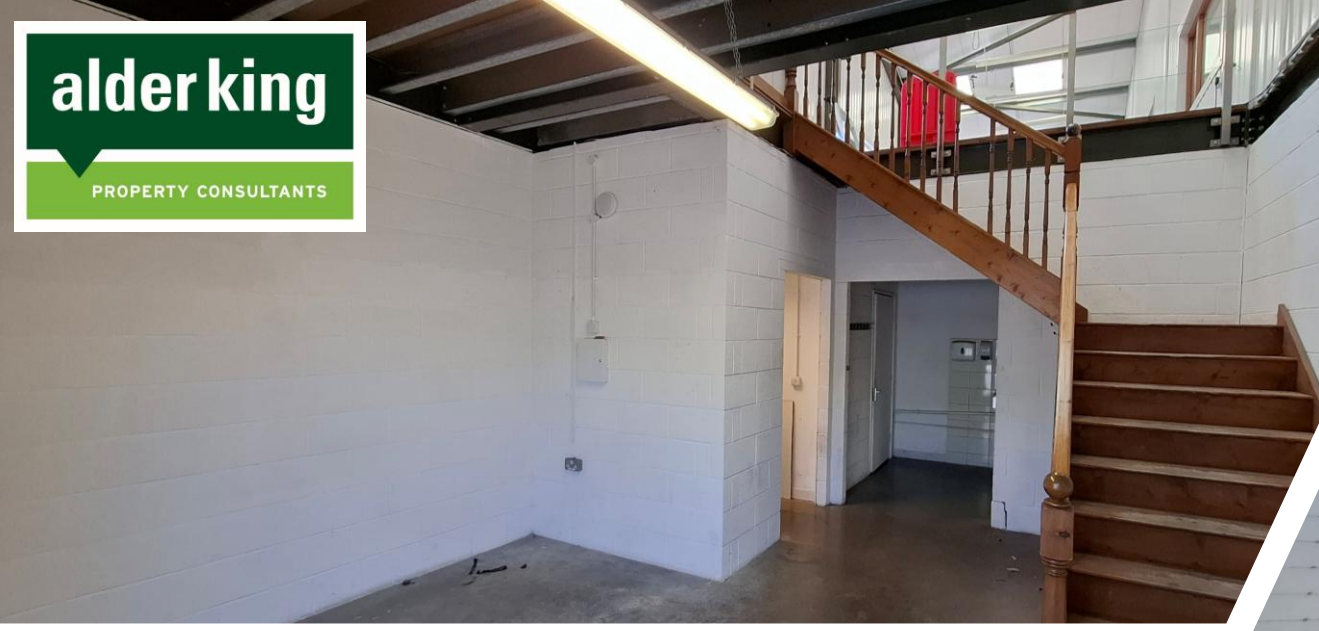
Services

We are advised that electricity, water and drainage are connected to the premises. We confirm that we have not tested any of the service installations and any occupier must satisfy themselves independently as to the state and condition of such items.

Approximate gross internal areas

Unit 12 & 13	Sq ft	Sq m
Warehouse	3,923	364.52
Ground floor entrance & amenity	373	34.66
Mezzanine	1,091	101.38
TOTAL	5,387	500.56





Rates | EPC | Terms

Business Rates

The Valuation Office website states that from April 2026 the property has a rateable value of £37,500.

Interested parties should make their own enquiries to the local billing authority to ascertain the exact rates payable as a change in occupation may trigger an adjustment of the ratings assessment.

www.voa.gov.uk.

Energy Performance Certificate

An EPC has been commissioned.

Code for Leasing

For the latest RICS advice on commercial property leasing, please consult the [RICS Real Estate Code for Leasing 2020](#)

VAT

Under the Finance Acts 1989 and 1997, VAT may be levied on the rent. We recommend that the prospective tenants establish the VAT implications before entering into any agreement.

AML

A successful tenant will be required to provide relevant information to satisfy the AML requirements when Heads of Terms are agreed.

Legal Costs

Each party is to be responsible for their own legal costs.

Terms

The property is available on a leasehold basis. Full details available on request.

References/Rental Deposits

Financial and accountancy references may be sought from any prospective tenant prior to agreement. Prospective tenants may be required to provide a rental deposit.



Viewing Arrangements

For further information or to arrange an inspection, please contact the agents:



Alder King Property Consultants

Brunswick House
Gloucester Business Park
Gloucester
GL3 4AA

www.alderking.com

AK Ref: AJGR/N101558

Date: April 2026

Subject to Contract



Adrian Rowley

07771 874175

arowley@alderking.com



Windsor Cooper

07970 660376

wcooper@alderking.com



COMMERCIAL
AGENCY



INVESTMENT



BUILDING
SERVICES



PLANNING



RESIDENTIAL
DEVELOPMENT



PROFESSIONAL
SERVICES



MANAGEMENT
SERVICES



ASSET
RECOVERY

Important Notice

Alder King LLP is a Limited Liability Partnership registered in England and Wales. No OC306796.
Registered Office: Pembroke House, 15 Pembroke Road, Clifton, Bristol BS8 3BA.
A list of all Members is available at the Registered Office.

1. Money Laundering Regulations 2017

As part of our obligations under the UK Money Laundering Regulations, Alder King LLP requires any purchaser or tenant to provide information and documentation to satisfy our legal obligations.

2. Misrepresentation Act 1967

This marketing brochure is for guidance only and does not form part of any offer or contract and must not be relied upon as statements or representations of fact.

3. Control of Asbestos Regulations 2012 (CAR 2012)

It is the responsibility of the owner or tenant of the property, and anyone else who has control over it and/or responsibility for maintaining it, to comply with the regulations. The detection of asbestos and asbestos-related compounds is beyond the scope of Alder King and accordingly we recommend you obtain advice from a specialist source.