

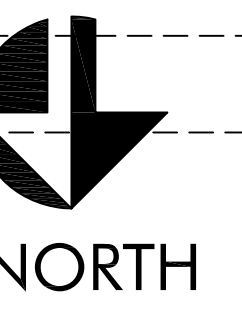
EXISTING BASEMENT LEVEL FLOOR PLAN

FREMONT SHOPPING CENTER

2500 W. COMMONWEALTH AVENUE ALHAMBRA, CA. 91801

PANDA RESTAURANT GROUP, INC.

SCALE: 3/32" = 1'-0" | 1



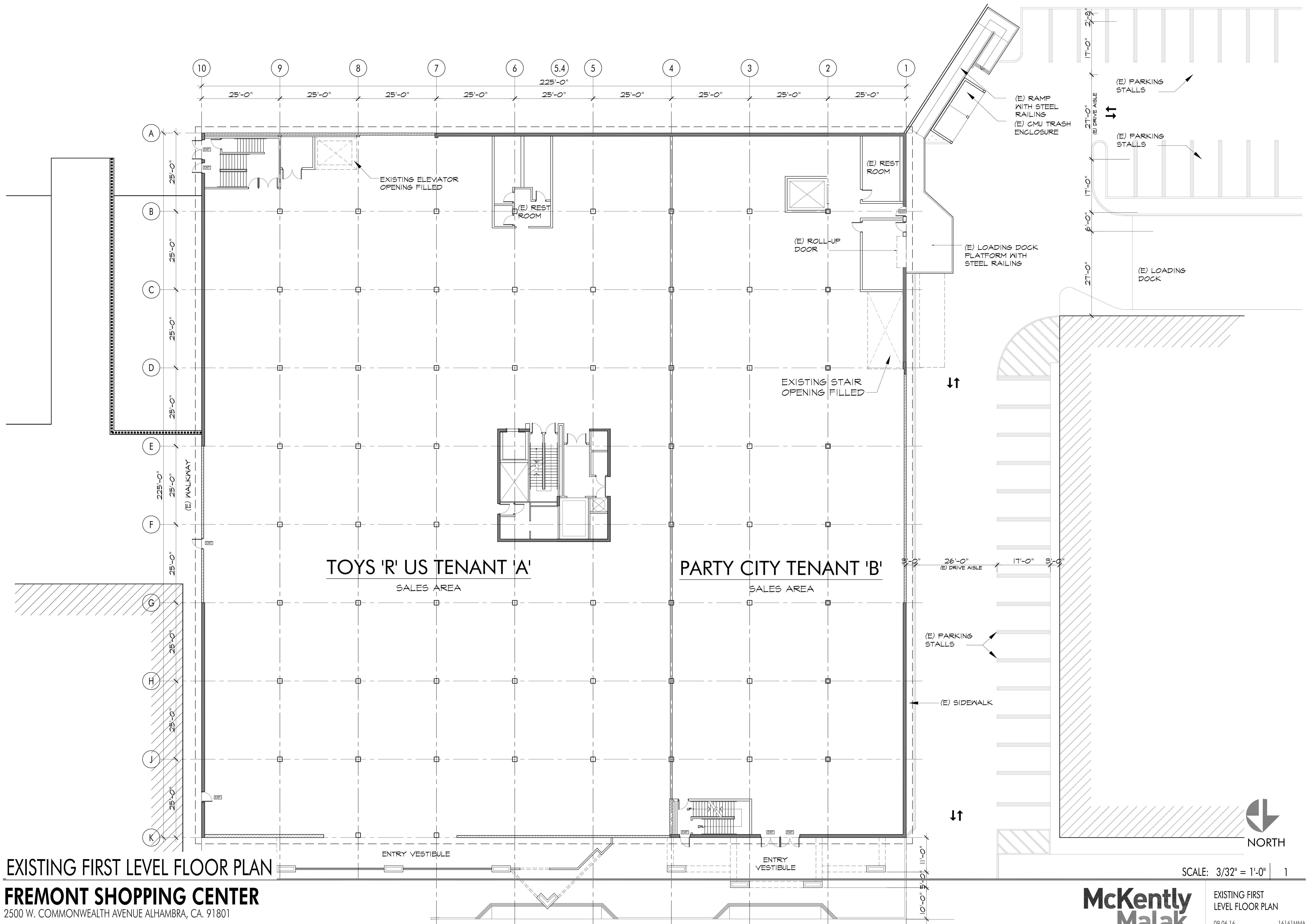
**McKently
Malak
ARCHITECTS**

234 East Colorado Blvd, Suite 725
Pasadena, California 91101-2201
TEL. 626 583.8348 FAX 626 583.8387

EXISTING BASEMENT
LEVEL FLOOR PLAN

09.06.16 16161MMA

EX-100



EXISTING FIRST LEVEL FLOOR PLAN

FREMONT SHOPPING CENTER

2500 W. COMMONWEALTH AVENUE ALHAMBRA, CA. 91801

PANDA RESTAURANT GROUP, INC.

SCALE: 3/32" = 1'-0" 1

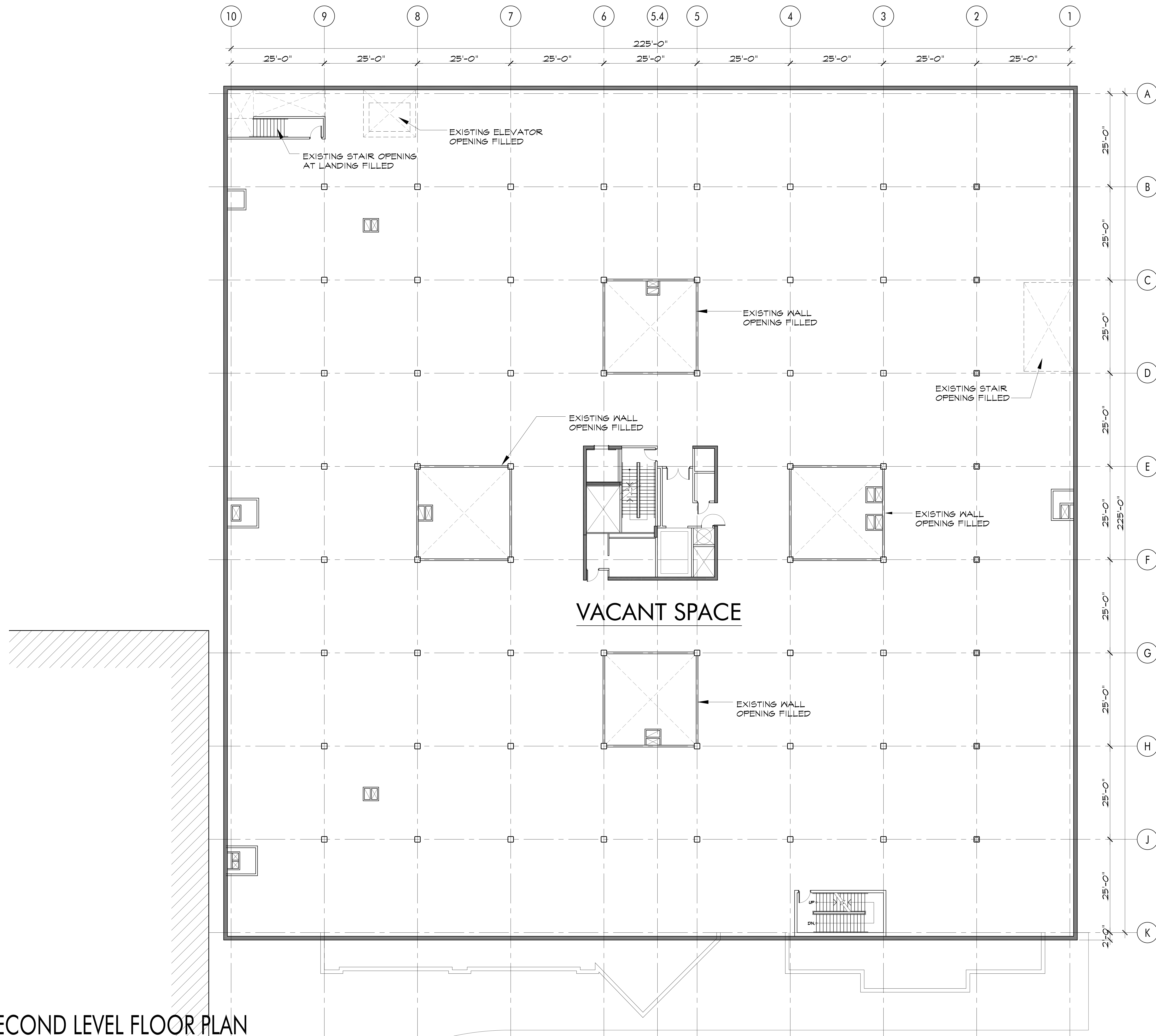
**McKently
Malak
ARCHITECTS**

234 East Colorado Blvd, Suite 725
Pasadena, California 91101-2201
TEL. 626 583.8348 FAX. 626 583.8387

EXISTING FIRST
LEVEL FLOOR PLAN

09.06.16 16161MMA

EX-101



EXISTING SECOND LEVEL FLOOR PLAN

FREMONT SHOPPING CENTER

2500 W. COMMONWEALTH AVENUE ALHAMBRA, CA. 91801

PANDA RESTAURANT GROUP, INC.

SCALE: 3/32" = 1'-0" | 1



**McKently
Malak**
ARCHITECTS

234 East Colorado Blvd, Suite 725
Pasadena, California 91101-2201
TEL. 626 583.8348 FAX. 626 583.8387

EXISTING SECOND
LEVEL FLOOR PLAN

09.06.16 16161MMA

EX-102