



# COPTHALL

BRIDGE HOUSE

OPENING NOVEMBER 2024

[WORKWELLOFFICES.com](http://WORKWELLOFFICES.com)

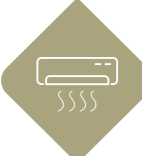










# SPACE AVAILABLE

FLOOR	Office Space (approx.)
GROUND	444 sqm
FIRST	432 sqm
SECOND	432 sqm
THIRD	443 sqm
<b>TOTAL</b>	<b>1,751 sqm</b>

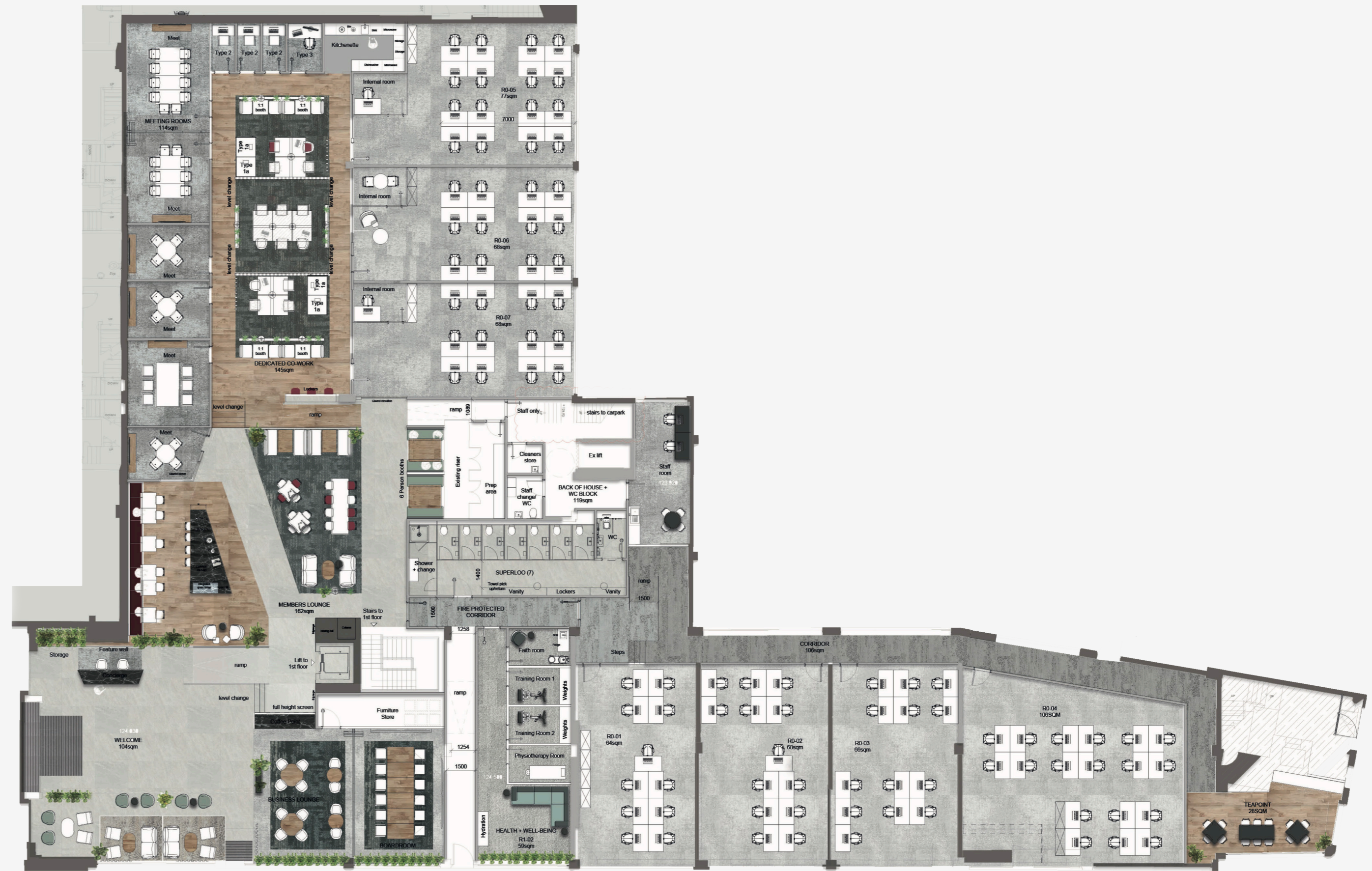
# WHAT'S INCLUDED

-  Air Conditioned
-  EPC Rating B
-  Full access raised floor
-  Turnkey solution
-  Utilities
-  2 DDA compliant lifts
-  Manned reception and 24-hour access control

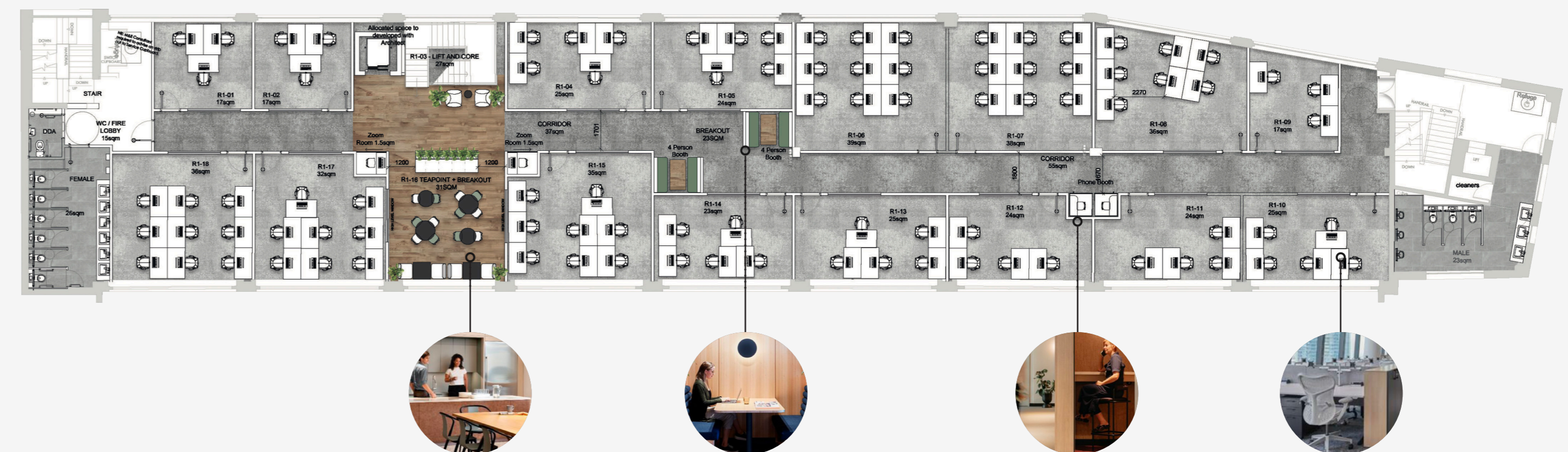
## MEETING ROOM SPACE

FLOOR	Office Space (approx.)
GROUND	188 sqm
FIRST	20 sqm
SECOND	20 sqm
THIRD	20 sqm
TOTAL	248 sqm

## GROUND FLOOR



## FLOORS 1, 2, 3





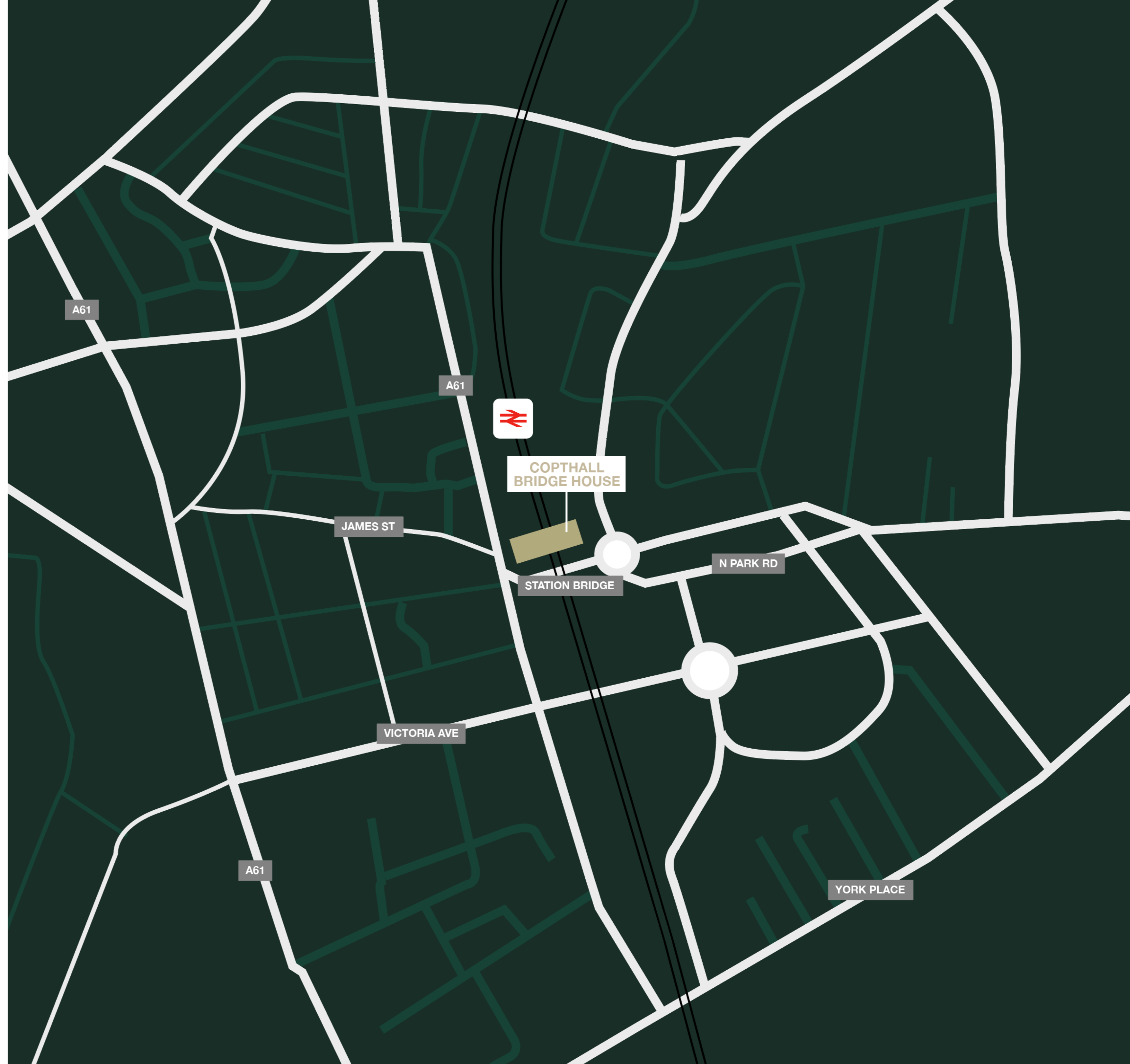
# WORKWELL

SERVICED OFFICES

MEETING ROOMS

CO-WORKING

VIRTUAL OFFICES





---

Thank you. For any questions, please contact [sales@workwelloffices.com](mailto:sales@workwelloffices.com)

[WORKWELLOFFICES.com](http://WORKWELLOFFICES.com)