



THE
PULMAN

20 THAYER STREET
MARYLEBONE W1



OVERVIEW

ELEGANT OFFICES

A brand new 18,000 sq ft
office headquarters in the
heart of Marylebone Village.





OVERVIEW

MADE FOR MARYLEBONE

A history of fine art and design permeates 20 Thayer Street. In 18th Century London important officers of state, as well as London's discerning gentry, chose to buy their personal and office stationery from the highly-regarded George Pulman & Sons.

OVERVIEW

BUILDING

ACCOMMODATION

LOCATION & LIFESTYLE

CONNECTIVITY

CONTACT



OVERVIEW

PRIME LOCATION

Quaint and quintessentially
English. Marylebone is the
West End's only true village.



CGI of aerial view of frontage



BUILDING

CAREFULLY CREATED

Today, the original stationery and publishing house has been rebuilt for the new millennium with an innate sense of style and elegance. A place that puts focus on employee well-being and productivity.

[OVERVIEW](#)

[BUILDING](#)

[ACCOMMODATION](#)

[LOCATION & LIFESTYLE](#)

[CONNECTIVITY](#)

[CONTACT](#)



BUILDING

30 THAYER STREET
Fourth Floor
Third Floor
Second Floor
First Floor


THE
PULMAN
30 THAYER STREET
MANHATTAN, NY



BUILDING

EXQUISITE QUALITY

The Pulman exudes quality throughout, making it an ideal HQ building for premium occupiers.

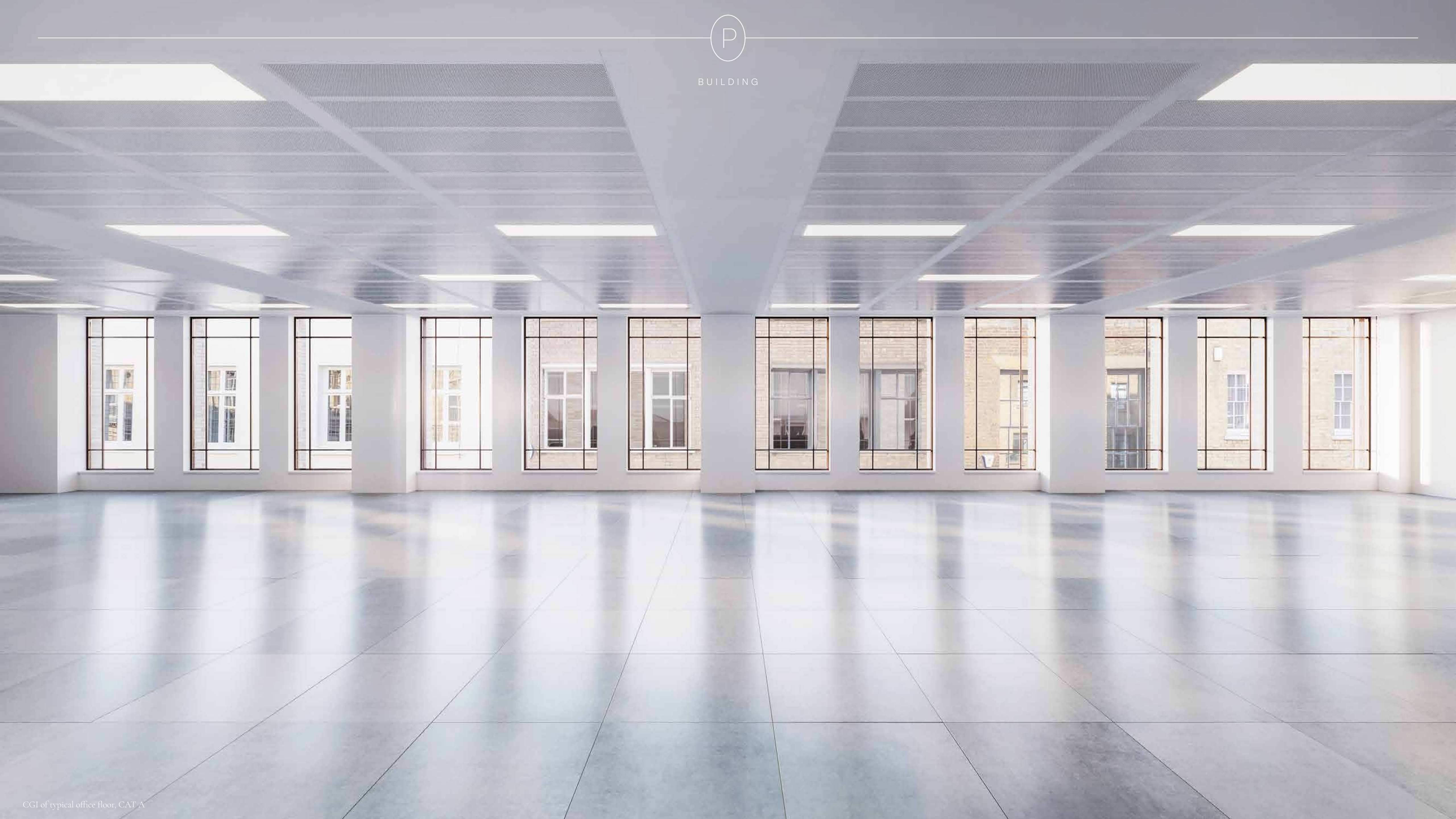


THE
PULMAN

20 THAYER STREET,
MARYLEBONE W1



BUILDING





BUILDING



CGI of typical office floor, fully fitted



BUILDING

ELEGANCE EVERYWHERE

From the stylish, dedicated
office reception on Thayer
Street, to the elegant
terrace on the 4th floor.



CGI of 4th floor terraces, nighttime



ACCOMMODATION

AREAS

FLOOR	SQ FT	SQ M
FOURTH FLOOR (TERRACE - 291 SQ FT)	2,029	188
THIRD FLOOR	4,618	429
SECOND FLOOR	5,112	475
FIRST FLOOR	5,680	528
GROUND (RECEPTION)	657	61
TOTAL	18,096	1,681

GROUND (OFFICE RECEPTION) 657 SQ FT

LOWER GROUND



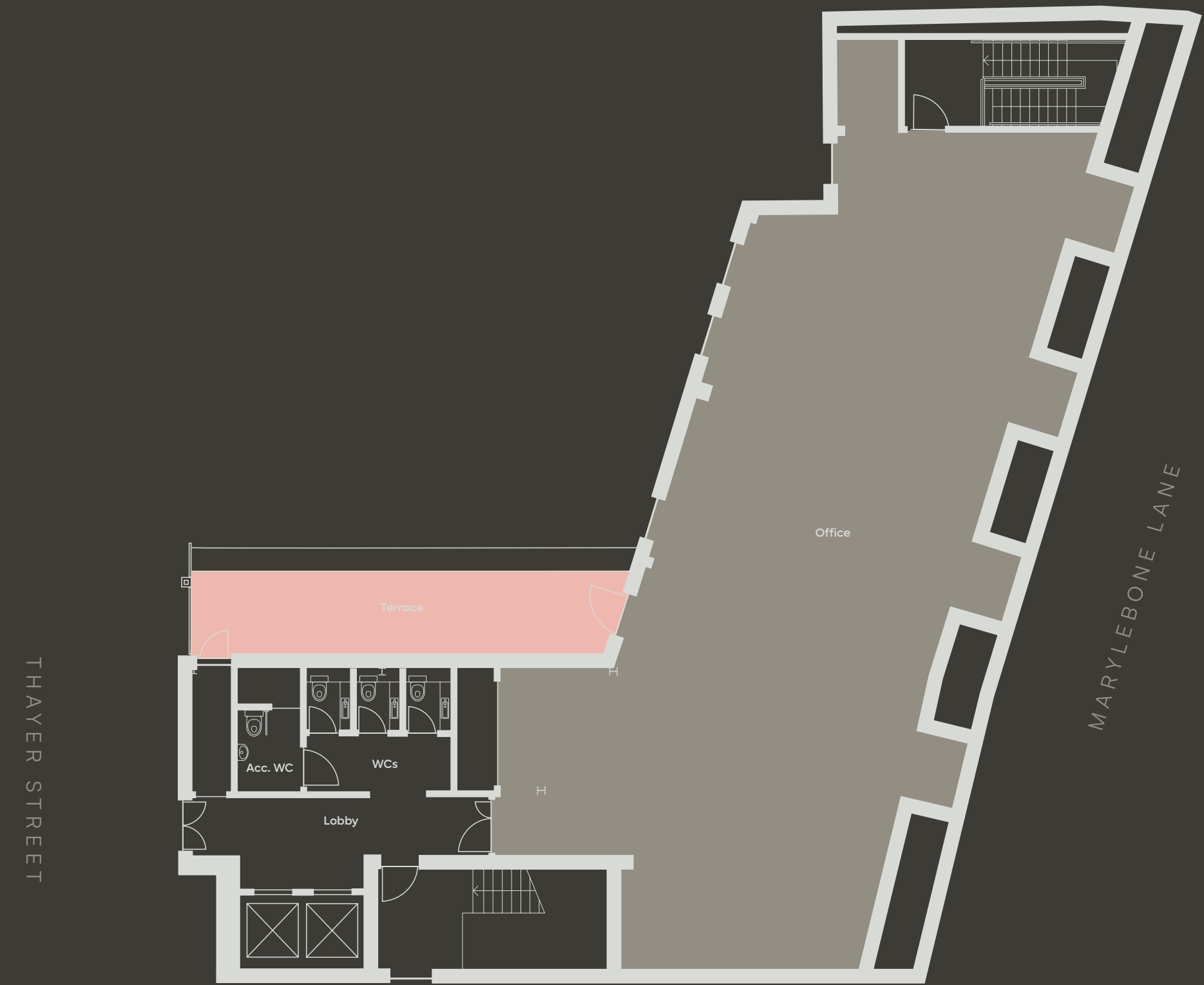
FIRST FLOOR 5,680 SQ FT

SECOND FLOOR 5,112 SQ FT

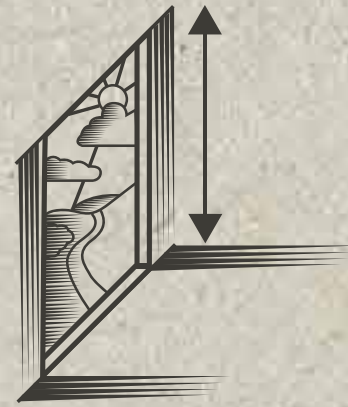


THIRD FLOOR 4,618 SQ FT

FOURTH FLOOR 2,029 SQ FT



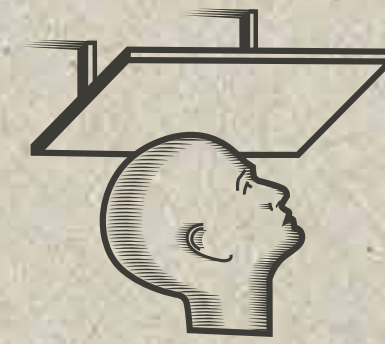
SUMMARY SPECIFICATION



Floor to ceiling windows



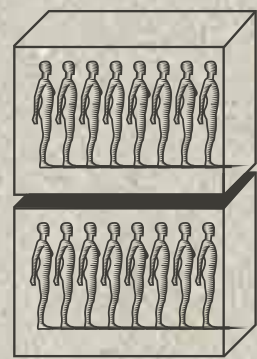
VRV air conditioning



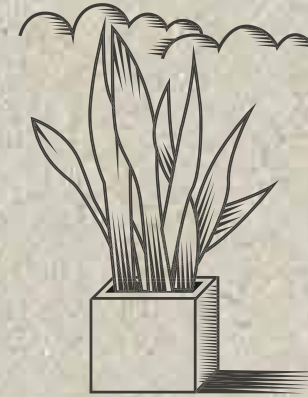
Contemporary suspended ceiling system



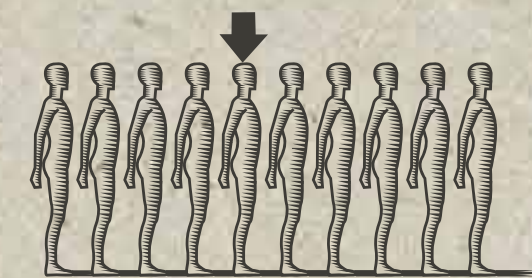
Typical finished ceiling height 2.6m



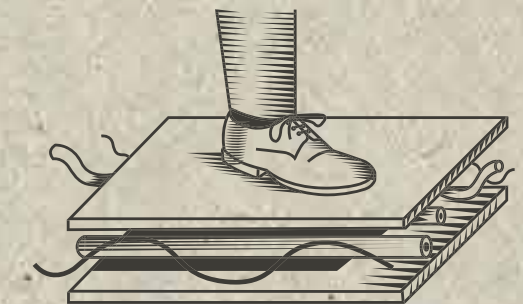
2x 8-Person passenger lifts



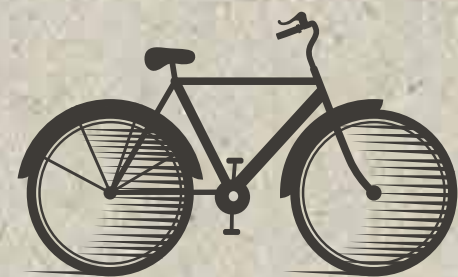
Private terrace (4th floor)



Occupancy density 1:10



Fully accessible raised floor with 70-100 mm void



30x Dedicated cycle spaces, lockers and drying room



7x Showers

ESG CREDENTIALS



BREEAM
Excellent



GREEN ROOF



FITWEL
1 Star



AIR RATED
Silver



LANDSCAPED
TERRACE



EPC
B



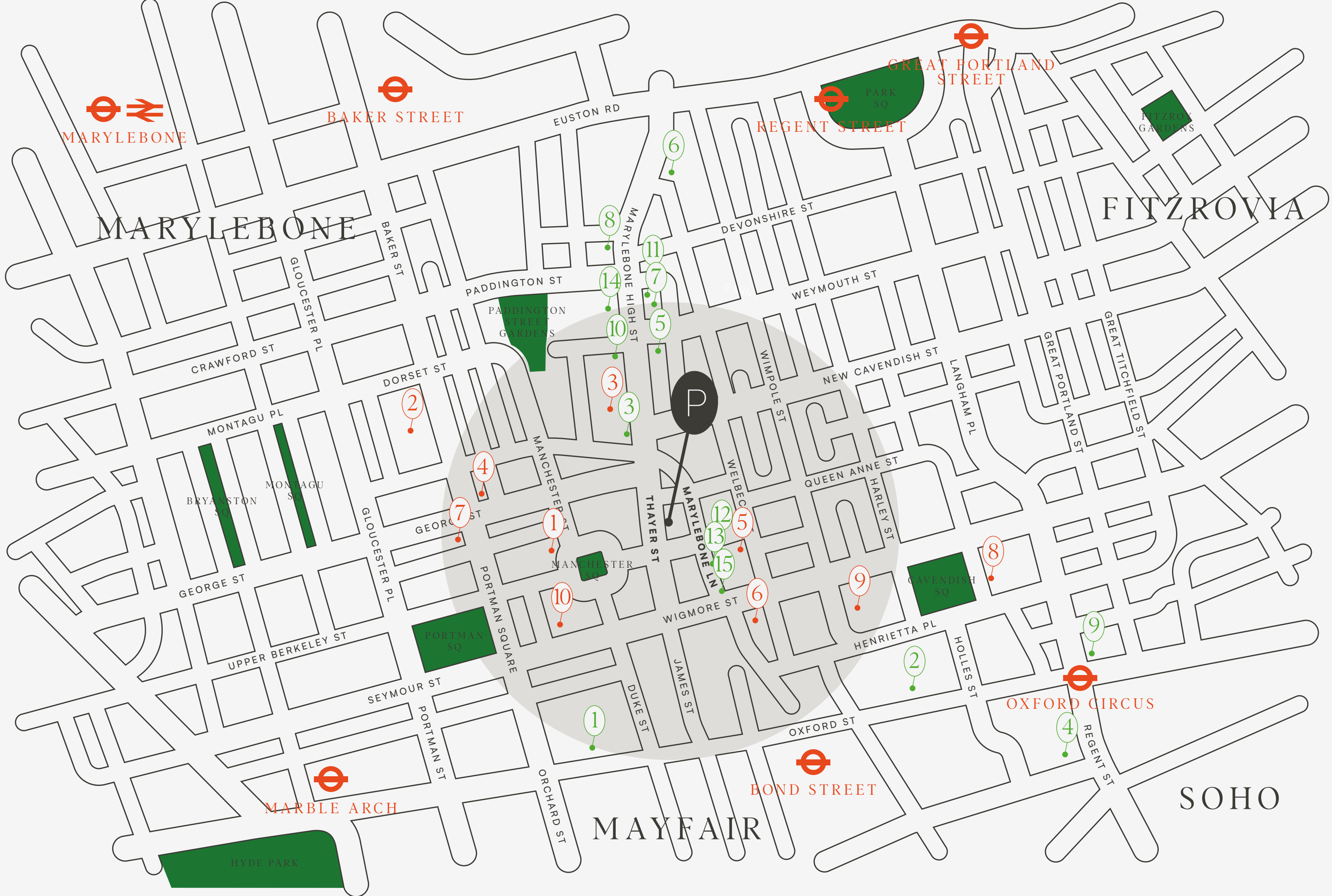
LOCATION & LIFESTYLE

OUT & ABOUT

Experience the best of the West End at this fashionable hub.

With pubs, fine dining, and trendy new restaurants led by top chefs, it's a hotspot for culinary delights. Whatever your taste and requirements, you'll never need to venture too far.

MEET MARYLEBONE



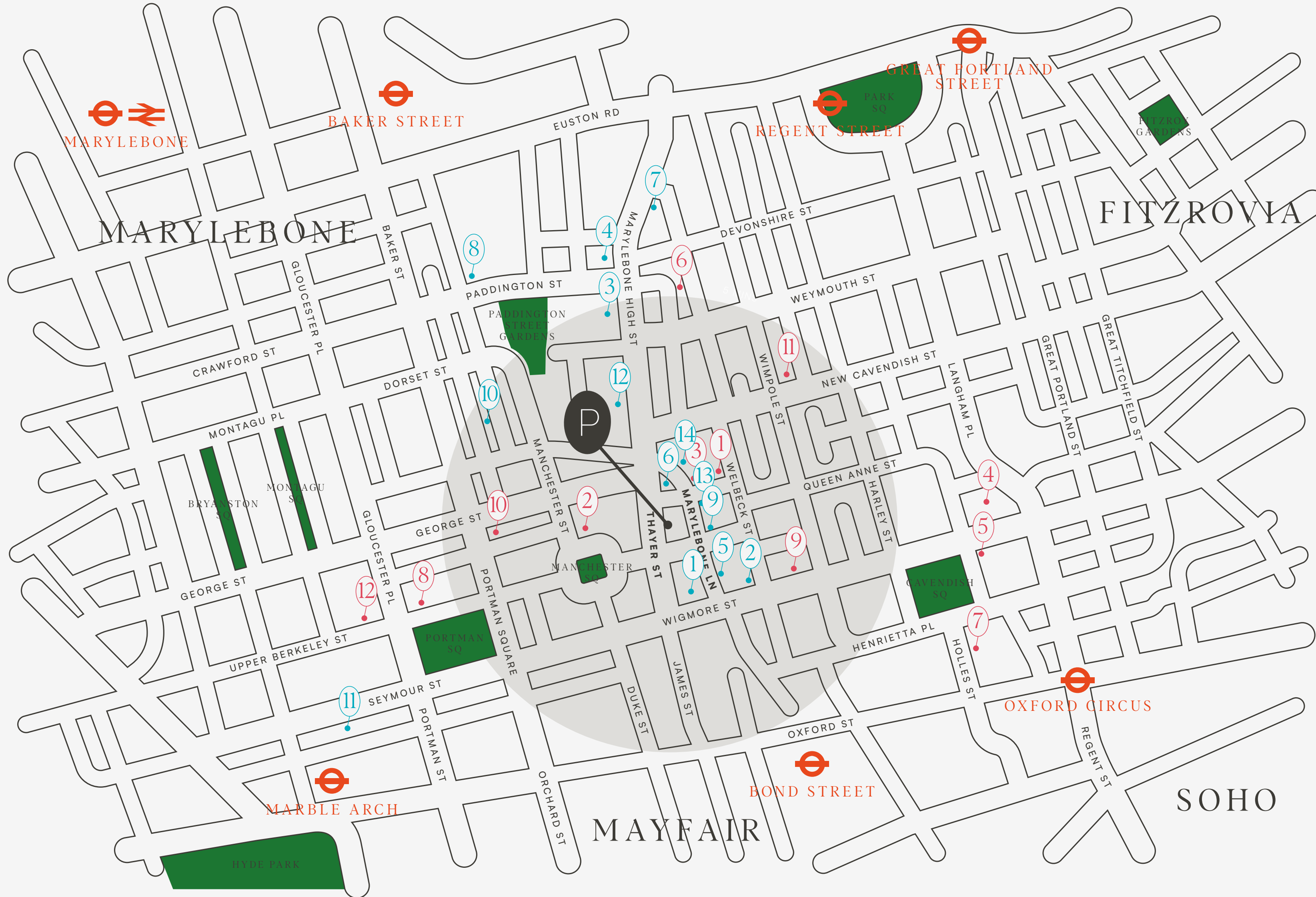
RETAIL

- 1 Selfridges
- 2 John Lewis
- 3 Luca Faloni
- 4 Apple
- 5 Rixo
- 6 The Conran Shop
- 7 Maje
- 8 Lululemon
- 9 Nike
- 10 Wyse London
- 11 Bayley & Sage
- 12 Creative Picture Framing
- 13 Pentons
- 14 Daunt Books
- 15 Koi Bird

OCCUPIERS

- 1. Lazard (2024)
- 2. BDO
- 3. Sequioa Capital
- 4. Forsters LLP (2024)
- 5. TDR Capital
- 6. AIMCo
- 7. Pimco (2025)
- 8. HCA International
- 9. Coca Cola
- 10. Union Bancaire Privee

MEET MARYLEBONE



RESTAURANTS, CAFES & BARS

- 1 Lina Stores
- 2 Cavita
- 3 Hagen
- 4 Carlotta
- 5 Delamina
- 6 Ottolenghi
- 7 Fischers
- 8 Chotto Matte
- 9 The Coach Makers Arms
- 10 The Chiltern Firehouse
- 11 KOL
- 12 Granger & Co
- 13 St. JOHN
- 14 108 Brasserie

LEISURE

- 1 The Marylebone Hotel
- 2 Wallace Collection
- 3 Third Space
- 4 The Langham Hotel
- 5 Barrecore
- 6 AMP Athletic
- 7 iRebel
- 8 Home House
- 9 Wigmore Hall
- 10 Kobox Marylebone
- 11 Club 51
- 12 Nobu



SPLASH OUT

The Village is home to designer clothes shops, unique artisan creators and all the shopping your heart desires can be found on nearby Oxford Street and Bond Street.

A little bit of Paris will soon be arriving in Marylebone with the opening of fashion retailer Sezane this summer.



LOCATION & LIFESTYLE

ATTRACTIVE COLLECTIONS

The Wallace Collection in London displays 5,500+ artworks collected by Marquesses of Hertford and Sir Richard Wallace. Its exhibits comprise paintings by artists such as Rembrandt, Titian, and Velázquez, making it an essential stop for art lovers in London.

EAT OUT

Try the goulash at Paul Rothe & Son and shop at The Farmer's Market, perhaps the best in London. St. JOHN is perfect for evenings of wine and fine food, and 28-50 by Night offers a speakeasy feel and cool jazz. The Coach Makers Arms is a proper pub with food curated by Ben Tish.





LOCATION & LIFESTYLE

GREEN SPACES

Regent's Park and Paddington Street Gardens are on the doorstep of Marylebone Village meaning occupiers can take advantage of the outdoor spaces available.





LOCATION & LIFESTYLE



WORK OUT

Third Space Marylebone is an urban sanctuary of a stylish gym, while Club 51 is a private health and fitness club with programmes designed to drive optimal performance in all areas of your life.



CONNECTIVITY

LINKS

The Pulman's location offers easy access to the rest of London, the UK, and beyond. Nearby Baker Street tube is serviced by multiple lines, and Bond Street, which has the Jubilee and Elizabeth lines, provides connections to Heathrow and the Eurostar. Marylebone Station serves Chilterns and Birmingham.

[OVERVIEW](#)

[BUILDING](#)

[ACCOMMODATION](#)

[LOCATION & LIFESTYLE](#)

[CONNECTIVITY](#)

[CONTACT](#)

WALK & CYCLE TIMES



Walk Times
from

THE
PULMAN

5
MINS

BOND
STREET



11
MINS

OXFORD
CIRCUS



12
MINS

MARBLE
ARCH



16
MINS

BAKER
STREET



18
MINS

MARYLEBONE

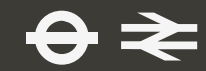


Cycle Times
from

THE
PULMAN

7
MINS

MARYLEBONE



13
MINS

KING'S
CROSS



21
MINS

CITY OF
LONDON



24
MINS

LIVERPOOL
STREET



24
MINS

BATTERSEA
POWER STATION





CONNECTIVITY

TUBE TIMES



Travel Times
from

**BOND
STREET**



PADDINGTON

BANK

**LONDON
BRIDGE**

**KING'S
CROSS**

HEATHROW



From
Paddington

From
Bank

From
London Bridge

From
King's Cross

From
Heathrow

90
MINS

Bristol

110
MINS

Cardiff

4
MINS

Liverpool St

13
MINS

Stratford

40
MINS

Gatwick Airport

50
MINS

Luton Airport

90
MINS

Birmingham

135
MINS

Manchester

100
MINS

Berlin

480
MINS

New York



CONTACT

GET IN TOUCH

JAMES
LUNN

jlunn@geraldeve.com
07825 006 692

RHODRI
PHILLIPS

rphillips@geraldeve.com
07768 615 296

VIVIANA
THURSTAN

vthurstan@geraldeve.com
07385 409 535

THE
HOWARD
deWALDEN
ESTATE

thepulmanw1.co.uk



GERALDEVE
A NEWMARK COMPANY

Disclaimer: Gerald Eve LLP is a limited liability partnership registered in England and Wales (registered number OC339470 and registered office at One Fitzroy 6 Mortimer Street London W1T 3JJ). The term partner is used to refer to a member of Gerald Eve LLP, Newmark GE Services LLP or an employee or consultant with equivalent standing and qualifications. The particulars are issued pursuant to the following conditions: No Offer: These particulars do not, and shall not constitute, in whole or in part, an offer or a contract or part thereof. Gerald Eve LLP, nor any Gerald Eve Person has authority to make or enter into any such offer or contract; No Reliance: All statements contained in these particulars are made without acceptance any liability in negligence or otherwise by Gerald Eve LLP and/or any Gerald Eve Person, for themselves or for the Vendors/Lessors. None of the statements contained in these particulars is to be relied on as a statement or representation of fact or warranty on any matter whatsoever, and intending purchasers must satisfy themselves by whatever means as to the correctness of any statements made within these particulars and/or the fitness of the property for any purpose whatsoever. In particular, and without prejudice to the foregoing: (a) all images, photographs, videos etc. may show only certain parts of the property and only at it appeared at the time they were created; (b) any statement concerning price or value is provided purely as guidance, it does not constitute a formal valuation and should not be relied upon; and (c) any reference to alterations to, or use of, any part of the property does not mean that any necessary planning, building regulations or other consent has been obtained. Crime Prevention: In accordance with our legal obligations pursuant to the Money Laundering, Terrorist Financing and Transfer of Funds (Information on the Payer) Regulations 2017, the Proceeds of Crime Act 2002 and other regulations, Gerald Eve LLP may be required to establish the identity and source of funds of all parties to property transactions (including both Vendors/Lessors and Purchasers/Lessees). Failure to procure this information where needed may delay or cancel any potential transaction or prevent Gerald Eve LLP from acting altogether. Privacy: For further information concerning how we use personal data please see our privacy statement: www.geraldeve.com/privacy-statement/ Particulars issued July 2023.