

BerghemMews

158a Blythe Road W14 0HN

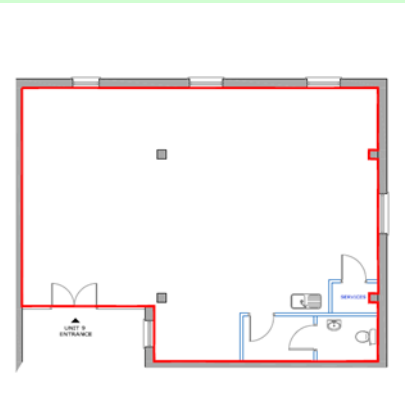
9 & 10 Berghem Mews

Ground floor offices with terrace
553 / 980 / 1533 sq ft approx.

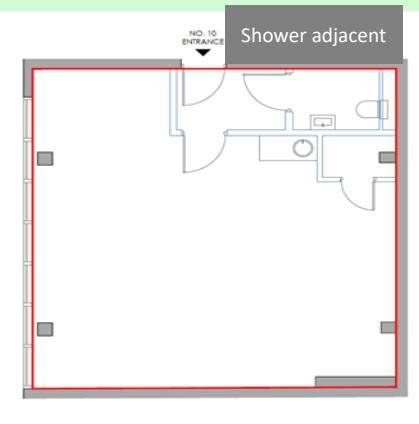
Suitable for
gym or fitness
users!



No. 9 980 sq ft



No. 10 553 sq ft



Rent pax
£35 psf

Rates psf
£12—£13

S/c psf
£8.50

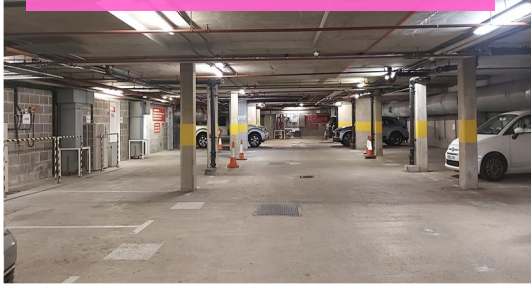
Exclusive of
VAT, tenant
costs, utilities
and insur-
ance and
quoted ap-
prox.

- On site manned security
- Private terrace with No 9
- Great range of sizes
- Brook Green open space very nearby
- Media style fit out with great natural light

- Ample on site parking
- 24 hour access
- Flexible leases
- Most with wood style flooring
- Many suites with airconditioning



Large bright underground car park



Location

These Mews offices are less than 10 minutes walk from Hammersmith or Shepherds Bush tube stations.

Description

Created in Media style we have a great range of bright open plan suites that provide stylish yet practical offices most with their own front doors. All have access to the wide landscaped courtyard and the large underground car park.

Leases

New flexible Leases are available short or long term.

Rates and service charges

See page 1. All figures are approximate.

EPC

Available on request.

Parking

There is a large bright underground car park where low cost spaces are available to rent. Note: Hammersmith and Fulham charge business rates on parking spaces.

Shower

There is a super-smart onsite shared shower



Neville Forrest
07770 477 166

neville@ovingtonproperty.com



Mark Belsham
07973 372 698
Mark.belsham@eddisons.com