



15 Temple Street, Aylesbury, HP20 2RN

To Let | 584 sq ft

GROUND FLOOR OFFICE IN GRADE II LISTED BUILDING



15 Temple Street, Aylesbury, HP20 2RN

TO LET

Summary

- Size: 584 sq ft
- Rent: £16,000 per annum
- Rates payable: TBC
- EPC: C (68)

Further information

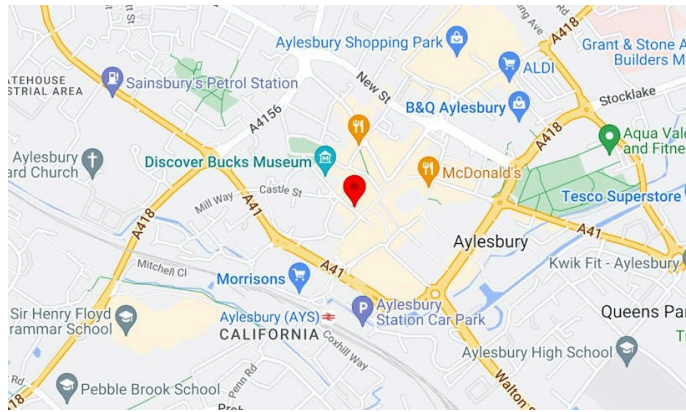
- [View details on our website](#)
- [Microsite](#)

Viewings and Further Information



Neave DaSilva
01494 796054 | 07827 908926
nds@chandlergarvey.com

www.chandlergarvey.com



Description

The property comprises a period Grade II listed building with ground floor office, there is also a cellar used for storage.

The ground floor retail unit has large windows fronting Temple Street which is laid out mainly as open plan with a rear office leading to a kitchen. there is a toilet with access to the back door.

Location

The property is prominently located in Temple Street, close to the main retail areas of Aylesbury. Aylesbury is the County Town of Buckinghamshire and is approximately 44 miles northwest of central London 23 miles from Oxford and 15 miles south of Milton Keynes.

The town is on the junctions of the A41 the A413 and A418 with access to the M40 M1 and M25 motorways within a 20 minute drive. The Chiltern Railway Line provides a direct rail service to London Marylebone of approximately 55 minutes.

Terms

A new lease to be granted direct from the Landlord on



VAT

Not applicable. No VAT is payable

Legal fees

Each party to bear their own costs

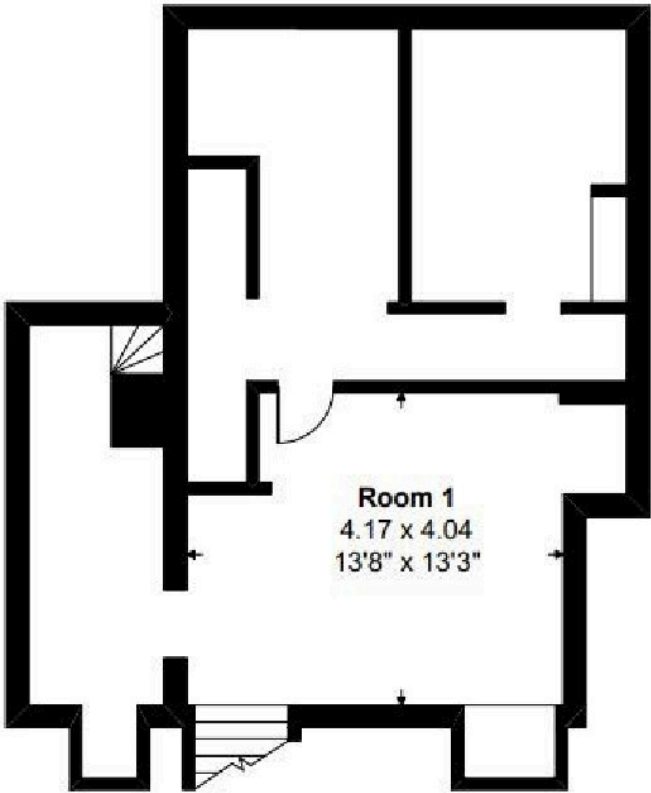
Accommodation

The accommodation comprises the following areas:

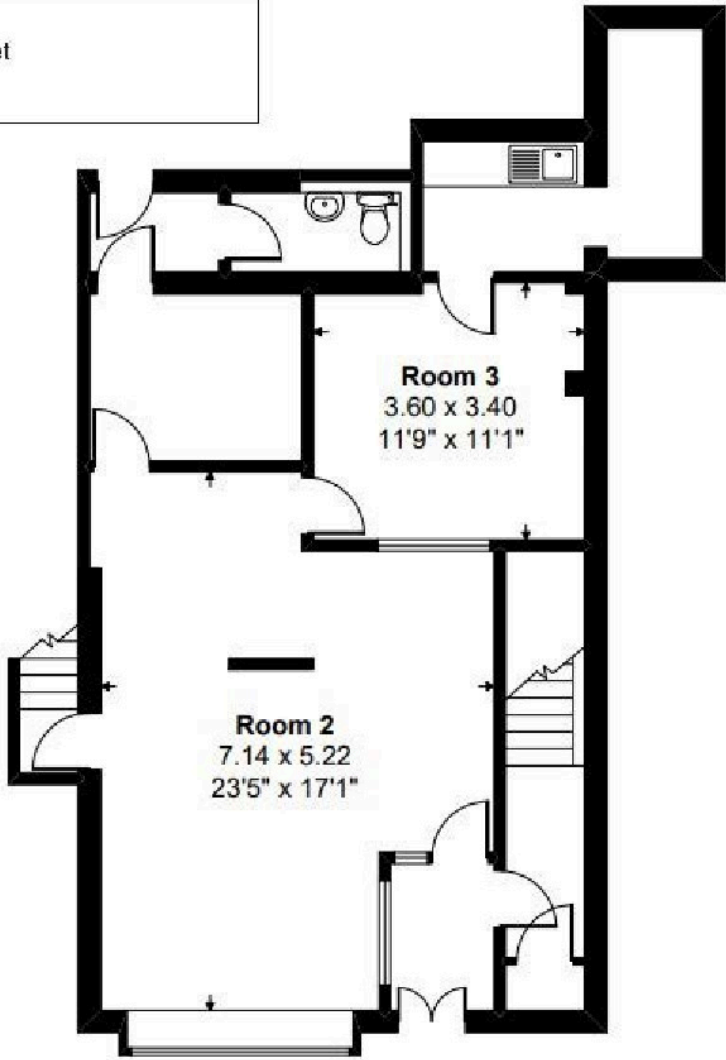
Name	sq ft	sq m	Rent	Availability
Ground - Retail with basement storage	584	54.26	£16,000 /annum	Available
Total	584	54.26		

Floor plan

15 Temple Street
Aylesbury



Basement



Ground Floor

