

Welcome to Unity Marylebone

Ambika House, 9-11 Portland
Place, London W1B 1PR

A workspace designed for success

Unity Marylebone is a vibrant, fully serviced workspace in one of London's most prestigious locations, created for businesses looking for an inspiring and well-connected environment.

Every detail is thoughtfully curated—from premium furnishings and an inviting colour palette to stylish breakout areas, high-spec meeting rooms, and seamless technology—ensuring a workspace that enhances both comfort and productivity.

Join a community of entrepreneurs and business owners who understand the value of wellbeing, culture, and collaboration.



CGI of Unity Marylebone reception



Beautifully designed spaces

At Unity Marylebone, every detail is curated to inspire success and support the way modern teams connect and work.

Breakout areas

Designed for flexibility, our breakout spaces suit every working style—offering space to focus, collaborate, or simply recharge.

At the heart of the first-floor breakout is a symmetrical teapoint, built for effortless flow and high-traffic use. Premium appliances—larger fridges, microwaves, dishwashers, and Zip taps—are strategically placed for ease and efficiency. Barista-style coffee stations allow you to refuel and integrated waste solutions help maintain a clean, seamless aesthetic.

State-of-the-art meeting rooms

Our meeting rooms are creative spaces designed to spark conversation and fresh thinking. Whether you're hosting clients, brainstorming, or connecting with partners, these rooms are perfect for meaningful collaboration.



CGI of Unity Marylebone kitchen and breakout area

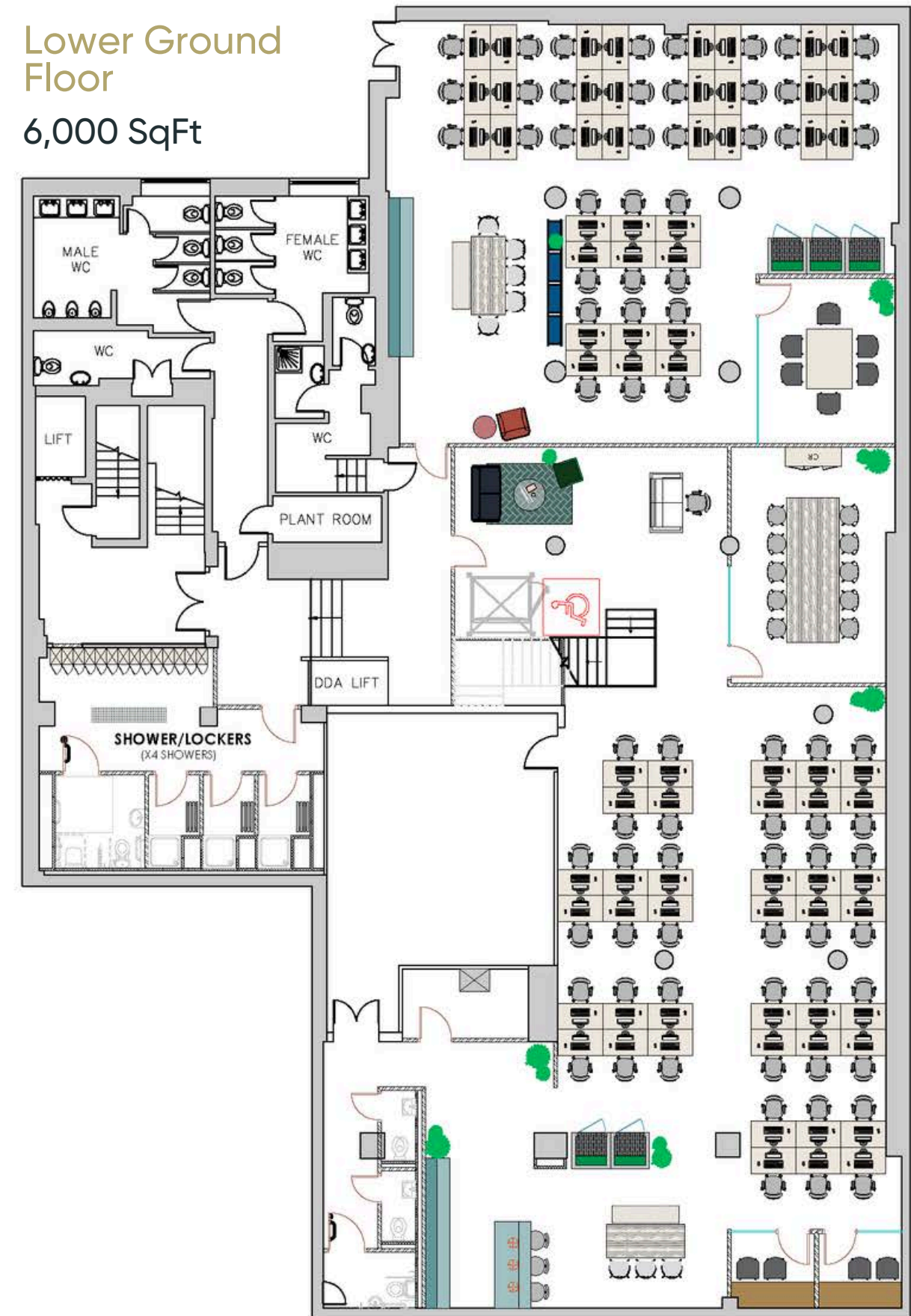


Fantastic possibilities
that could work for you

Ground Floor 3,600 SqFt



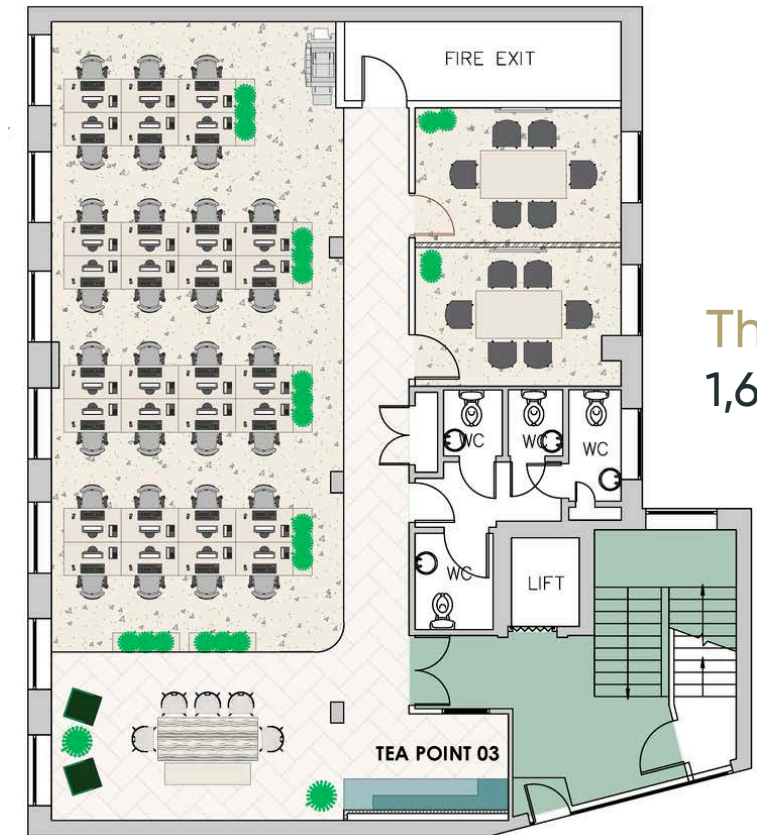
Lower Ground Floor
6,000 SqFt



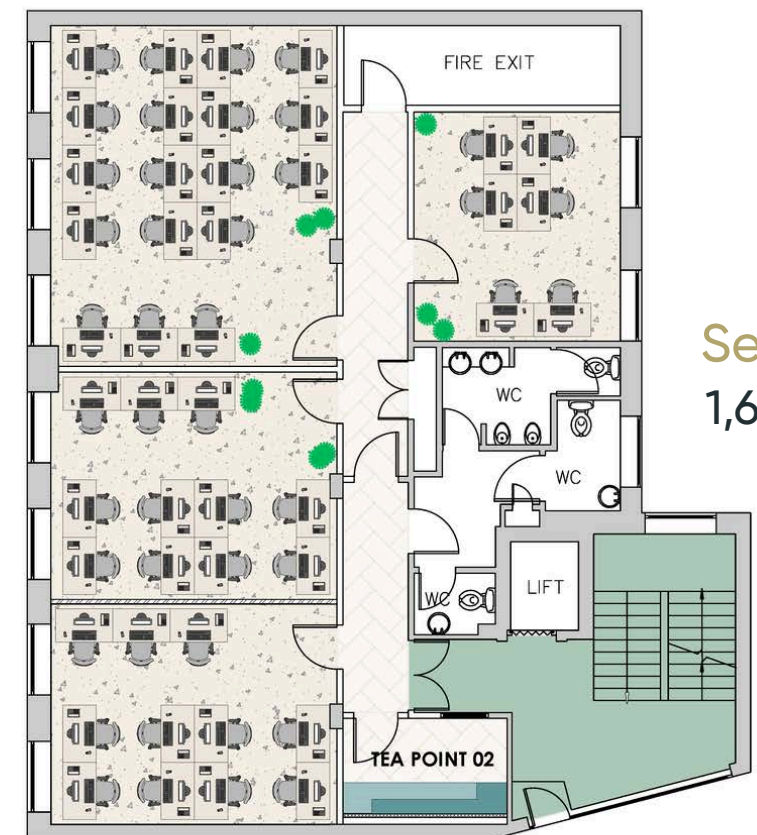
First Floor
10,100 SqFt



Third Floor
1,650 SqFt



Second Floor
1,650 SqFt





Every detail thoughtfully curated with you and your team in mind

Fully furnished office, customisable and tailored to your needs

Fast, secure, resilient wifi and dedicated superfast broadband options are available

Bookable meeting rooms with preferential rates

Fully fitted kitchen, breakout and communal spaces

Complimentary Fairtrade barista coffee, tea, and Brita-filtered water

Access to Meavo's state-of-the-art soundproof phone booths

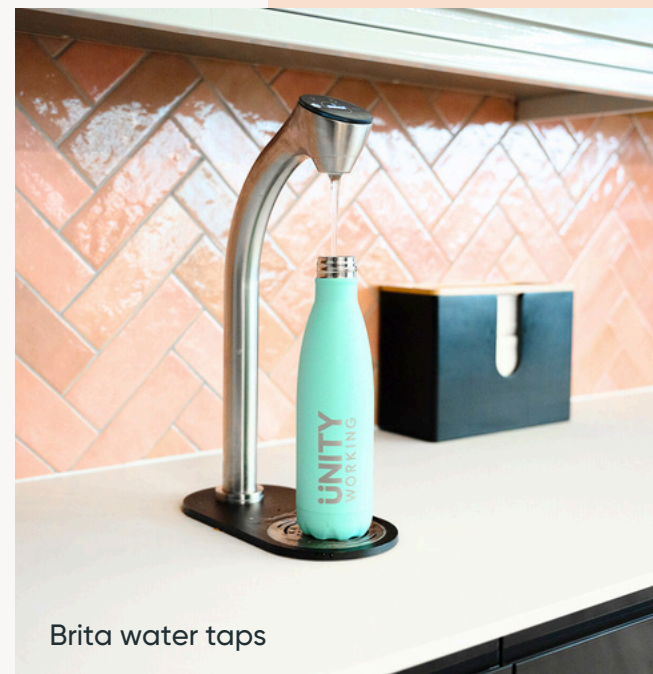
Flexible contracts that scale with your business

24-hour access

On-site showers



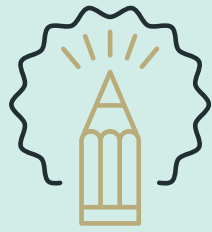
CGI of Unity Marylebone first floor



Brita water taps



Unity Moorgate



Your workspace, your way

At Unity, we understand that every business is unique—so your private workspace should be too. We go beyond one-size-fits-all solutions, offering tailored office spaces that suits how you and your team actually work.

Every layout, function and finish, is thoughtfully considered. From optimising desk layouts to designing meeting rooms and breakout areas, our team works closely with you to create an environment that fits seamlessly into your daily operations.

Unity Marylebone is designed to flex with you, so you can focus on what matters most.



Unity Moorgate

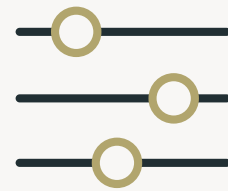


Meavo's state-of-the-art phone booths



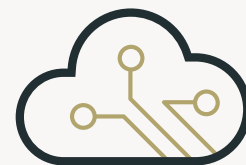
Unity Moorgate

A fully furnished private office that works for you, plus exceptional services to support your business.



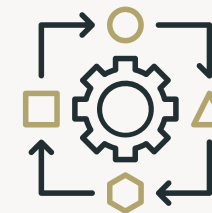
Fully flexible arrangements

When we say flexible, we mean it! From adaptable pricing and contract terms to customisable office layouts and hybrid work support, we tailor every detail to fit your business. With a simple 3-page agreement, we make it easy for you to scale, adapt, and thrive—on your terms.



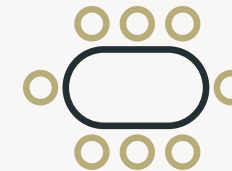
Superfast Wifi & seamless tech

Enjoy superfast and reliable wifi connectivity, allowing you to focus on what truly matters for your business without interruption. Our effortless technology supports varied work styles, ensuring your day flows seamlessly.



Adaptability as you need it

Strike the perfect balance between stability and adaptability. As your business evolves, scales, or shifts direction, we're here to support and assist you every step of the way, ensuring a seamless transition through every phase of your business journey.



State-of-the-art meeting rooms

At Unity, access to our beautifully designed meeting rooms is included — at no extra cost. While others charge for this essential service, we believe great ideas shouldn't come with a booking fee.



Your brand shines at Unity

At Unity, it's our people who make the difference. They're the familiar and friendly faces that understand your needs and make every challenge feel like a breeze. Our front-of-house staff always ensure a warm, inviting atmosphere for your team and visitors.



Artisan coffee, tea and water

Kickstart your day with our artisanal Fairtrade coffee, and stay hydrated with our Brita taps. Our kitchens are functional and aesthetically pleasing, making your coffee and meal breaks a delightful experience.

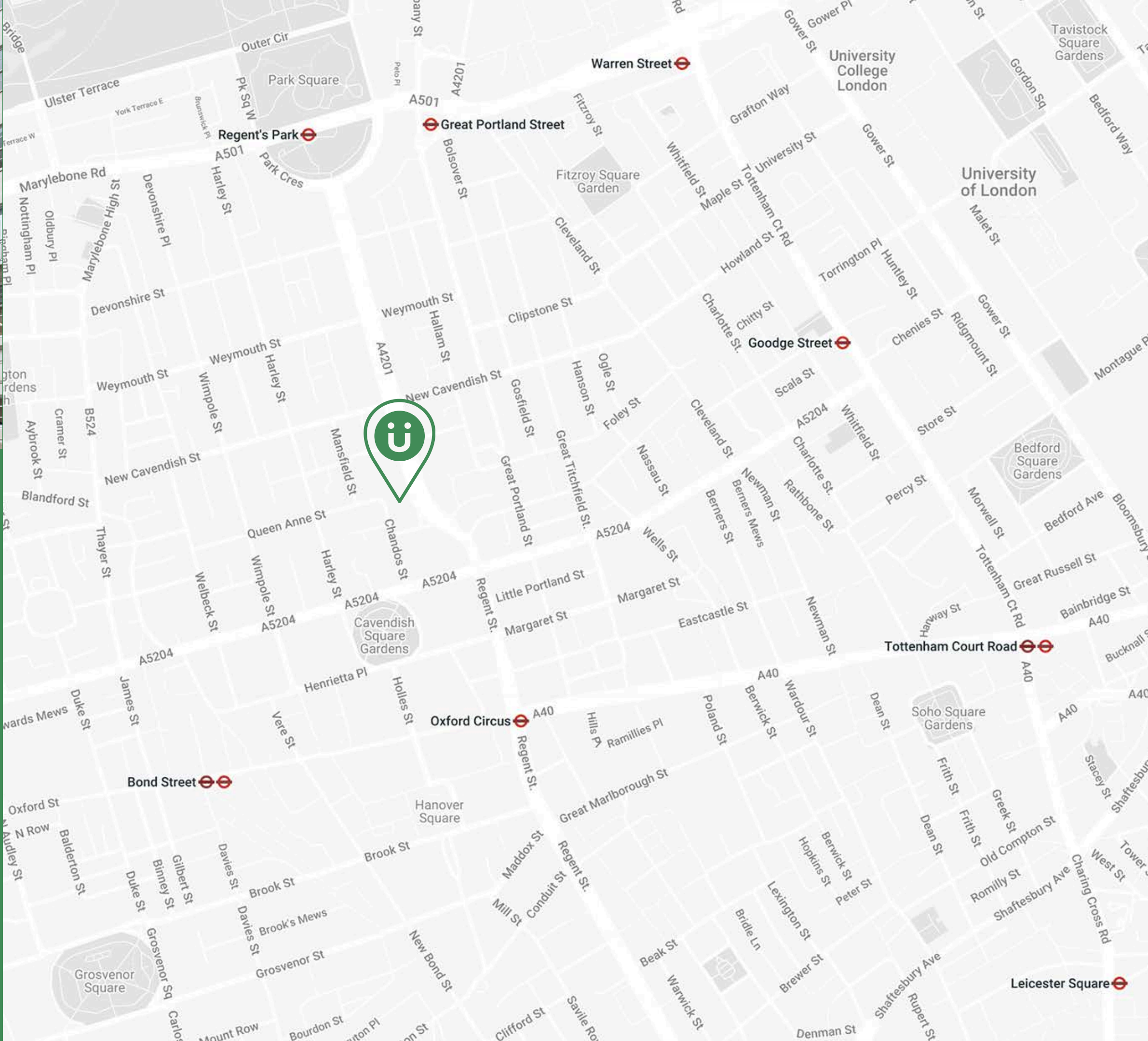


Located at Portland Place, Unity Marylebone is surrounded by world-class dining, boutiques, and cultural landmarks.

Portland Place offers businesses a prime location with exceptional amenities. Moments from Regent's Park, premium fitness centres, and leading medical, legal, and media businesses, this prime address offers prestige, convenience, and connectivity.

With world-class medical, legal, and media businesses nearby, Portland Place is a hub for ambitious companies seeking convenience, prestige, and connectivity.





Within a six minute walk
of the Victoria, Central
and Bakerloo lines



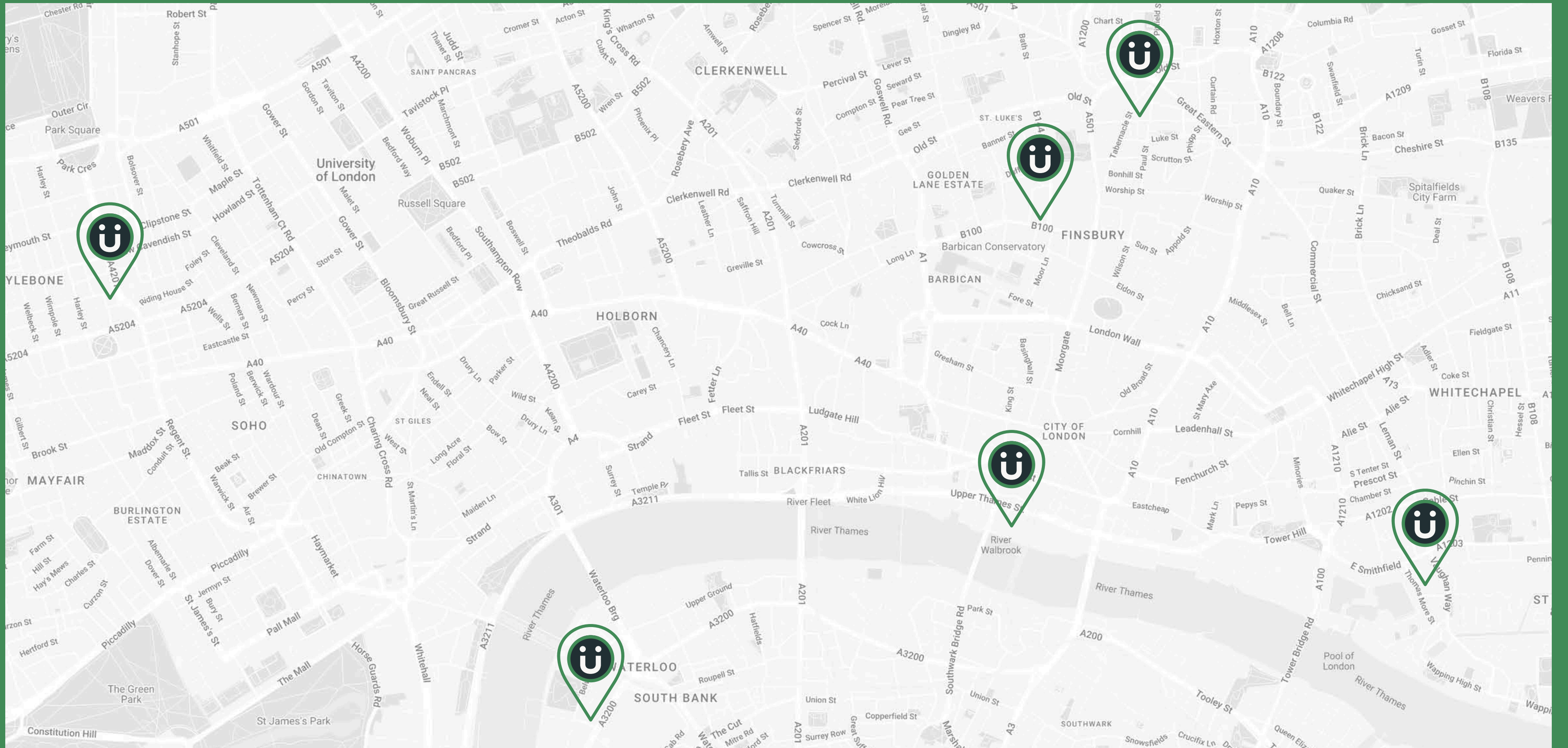
Oxford Circus 6min
Victoria, Central &
Bakerloo lines

Goodge Street 14min
Northern line

Bond Street 9min
Jubilee & Central lines

Euston Station 18min
Rail, Victoria, Northern lines

Leicester Square



 **Unity Working
locations**

Marylebone
Ambika House,
9–11 Portland Place,
London W1B 1PR

Waterloo
8 Leake Street,
London SE1 7NN

Shoreditch
69–77 Paul Street,
London, EC2A 4NW

Moorgate
14–20 Chiswell Street,
London EC1Y 4TW

Cannon Street
78–83 Upper Thames Street,
London EC4R 3TD

Moretown
1 Moretown,
4 Thomas More Street,
London, E1W 1YW

Don't just take our word for it...

We have been using Unity's flexible office space for over four years now and would highly recommend them to anyone. The staff is always courteous and professional, and they go above and beyond to assist us with any requests.

Unity's commercial dealings are always transparent and fair to all parties involved. They are flexible and accommodating whenever required."

Velocity Recruitment

Our lease was coming to an end and due to covid we had fewer people regularly in the office, we decided to downsize and rent some space in a serviced office environment. Unity made everything easy. Moving day was smooth, everything was ready and we were up and running by lunchtime.

Arelion

Unity's offices are extremely well-kept, and more importantly, the team is always welcoming and attentive to any issues that may arise.

What sets them apart is their genuine commitment to creating a good atmosphere within the building and I would wholeheartedly recommend Unity to anyone seeking a high-quality experience"

Feefo





Unity Shoreditch



Unity Moorgate



Unity Shoreditch



Barista coffee machines



Unity Moorgate



Collaborative breakout areas



Unity Shoreditch



various size meeting rooms



Unity Moorgate



Unity Moorgate



Make your next
move with
Unity Working

unityworking.com

Claire Robbins

claire.robbins@unityworking.com

07966 175179