



74 Gloucester Place, London, W1U 6HH

Ground Floor - 545 sq ft

- Furnished to provide 6 x desks in open plan and 1 x meeting room
- Fibre
- Kitchen
- Cooling
- Bright space with excellent natural light
- WCs & Shower

74 Gloucester Place

London, W1U 6HH

CROSSLAND
OTTER HUNT



Summary

Available Size	545 sq ft / 50.63 sq m
Rent	£45 per sq ft
Rates Payable	£20.18 per sq ft
Service Charge	£13.76 per sq ft
EPC	C

Description

The accommodation is located on the ground floor of this period mid-terrace building and is accessed via a well presented entrance hall. The suite comprises two interlinking rooms, the larger of the two has been furnished to provide 6 desks whilst the smaller room provides a meeting space with table and soft seating. The suite benefits from good natural light on both sides and a shared kitchen. There are WCs and a shower on the ground floor also.

Location

The property is situated on the east side of Gloucester Place between Portman Square and Marylebone Road. Baker Street underground station and Marylebone underground / mainline station are both within easy walking distance.

Accommodation

The accommodation comprises the following areas:

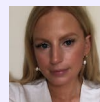
Name	sq ft	sq m	Availability
Ground	545	50.63	Available
Total	545	50.63	

Viewings

Via the sole agents, Crossland Otter Hunt.

Terms

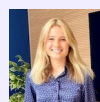
Available by way of a new, flexible lease.



Jessica Flather

020 7399 2743 | 07787296201

jessica@coh.eu



Charlotte Steele

020 7408 1114 | 07503625481

charlotte@coh.eu