



Tel: 0207 739 0494

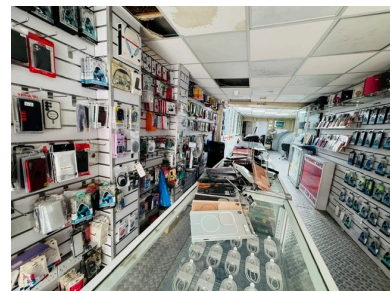
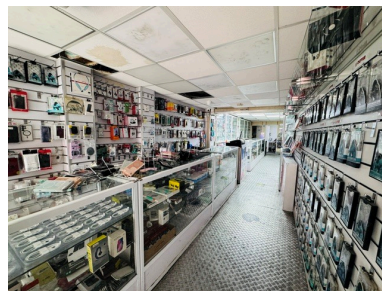
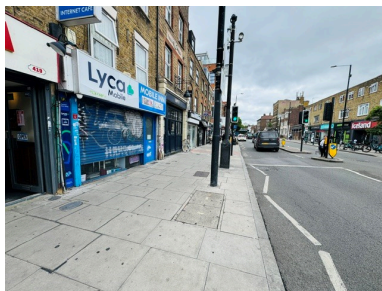
Bethnal Green Road, Bethnal Green, London, E2

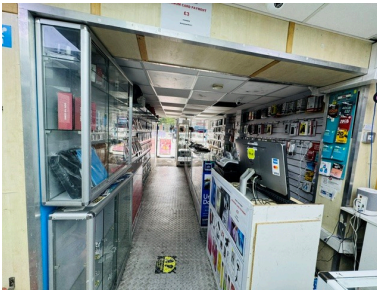
To Rent - £30,000 pa



Shop

An excellent opportunity to lease a spacious E class retail unit of approximately 1,200 sq ft in a highly sought-after location on Bethnal Green Road. Positioned in a high-footfall area, the premises benefit from constant pedestrian traffic and outstanding visibility, making it ideal for a wide range of retail or service-based businesses. The shop is conveniently located just a short walk from Bethnal Green Underground Station and sits directly opposite Iceland, attracting strong passing trade throughout the day. Surrounded by established retailers, independent businesses, and a vibrant local community, this unit offers an exceptional setting for businesses looking to grow and thrive.



**Contact****A:** Greenland Property Services

Ltd

T: 0207 739 0494**E:** info@greenlandsproperty.comReference: **GRN_005035****IMPORTANT NOTICE**

Descriptions of the property are subjective and are used in good faith as an opinion and NOT as a statement of fact. Please make further specific enquires to ensure that our descriptions are likely to match any expectations you may have of the property. We have not tested any services, systems or appliances at this property. We strongly recommend that all the information we provide be verified by you on inspection, and by your Surveyor and Conveyancer.