



frost
meadowcroft

85-87 RICHFORD ST

HAMMERSMITH
W6 7HJ

FOR SALE or TO LET

GUIDE PRICE £2.75 million

RENT £29.50 psf excl.

On the market for the first time in 30 years, this property comprises two self contained office buildings including a light industrial workshop and on-site parking for 10 cars.

Highly accessible with easy access to central London and the A4/M4, the building is situated in a sought after mixed residential area and is one of the last remaining light industrial locations in West London, adjacent to the Hammersmith and City Line.

With a wide range of local amenities, including Virgin Active, the highly acclaimed River Cafe and Hammersmith Broadway.



frost
meadowcroft

WORKSHOP



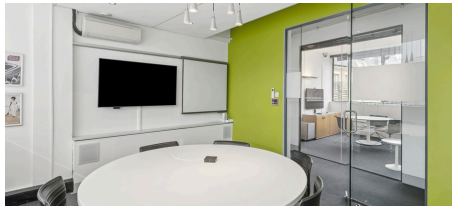
PARKING



OPEN PLAN OFFICES



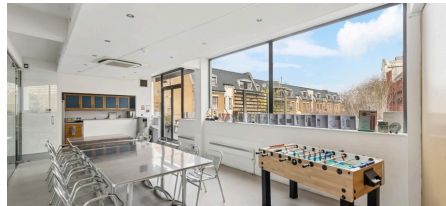
OUTDOOR TERRACE



MEETING ROOMS



KITCHEN FACILITIES



MEETING & BREAKOUT SPACE

POSSESSION

Full vacant possession upon completion.

TENURE

Freehold



10



Hammersmith
Broadway



PARKING



OPEN PLAN OFFICE

ACCOMMODATION

85 Richford St:

Ground: 461 sq ft, 1st: 460 sq ft, 2nd: 697 sq ft.

Total: 1,616 sq ft

87 Richford St:

Ground: 4,595 sq ft, 1st: 2,954sq ft.

Total: 7,549 sq ft

Total site: 9,164 sq ft



OFFICE & MEETING SPACE



LOCATION

RATEABLE VALUE

85 Richford St: £36,250

87 Richford St: £123,000

VAT is not applicatle to the sale

CONTACT

Shaun Wolfe 07900 911 135

swolfe@frostmeadowcroft.com

Tristan David 07789 347 999

tdavid@frostmeadowcroft.com

Misrepresentation Act 1967: These particulars are believed to be correct but their accuracy is not guaranteed and they do not form part of any contract. Unless otherwise stated, all prices and rents are quoted exclusive of VAT.

+44 020 8748 1200
FROSTMEADOWCROFT.COM

CONTACT US

ISLAND STUDIOS, 22 ST PETER'S SQ, HAMMERSMITH, W6 9NW