

To Let

657 to 824 sq ft

22 Gilbert Street, London,
W1K 5HD

Stunning Mayfair Townhouse close
to Bond Street Station at the
junction where Gilbert Street joins
Brook Street.

- Inclusive terms.
- Roof Terrace.
- Shared Onsite Meeting Rooms and Teapoints.
- Fitted or unfurnished.
- Rare Mayfair Small Office.
- Receptionist.

020 7183 8458
victorharris.co.uk



22 Gilbert Street, London, W1K
5HD

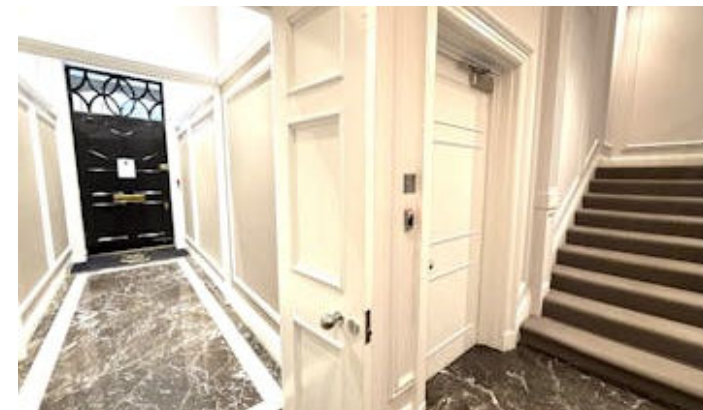
Summary

- Rent: £140 - £145 per sq ft
- VAT: Applicable
- EPC: C
- Lease: New Lease

Contact & Viewings



Lloyd Harris
020 7183 8458 | 07753767727
lloyd@victorharris.co.uk



Description

The property is superbly located in heart of Mayfair ideal for a business wanting to be located in a smart office building with reception.

Location

Located on the West Side of Gilbert Street close to it junction where it meets Brook Street. Only 3 minutes from Bond Street Station.

Accommodation

The accommodation comprises the following areas:

Name	sq ft	sq m	Availability
Ground	657	61.04	Available
3rd	742	68.93	Available
4th	824	76.55	Available
Total	2,223	206.52	



