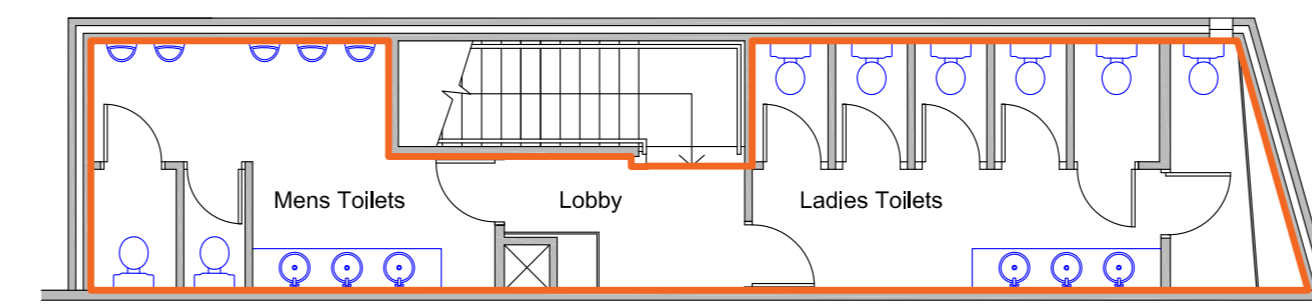


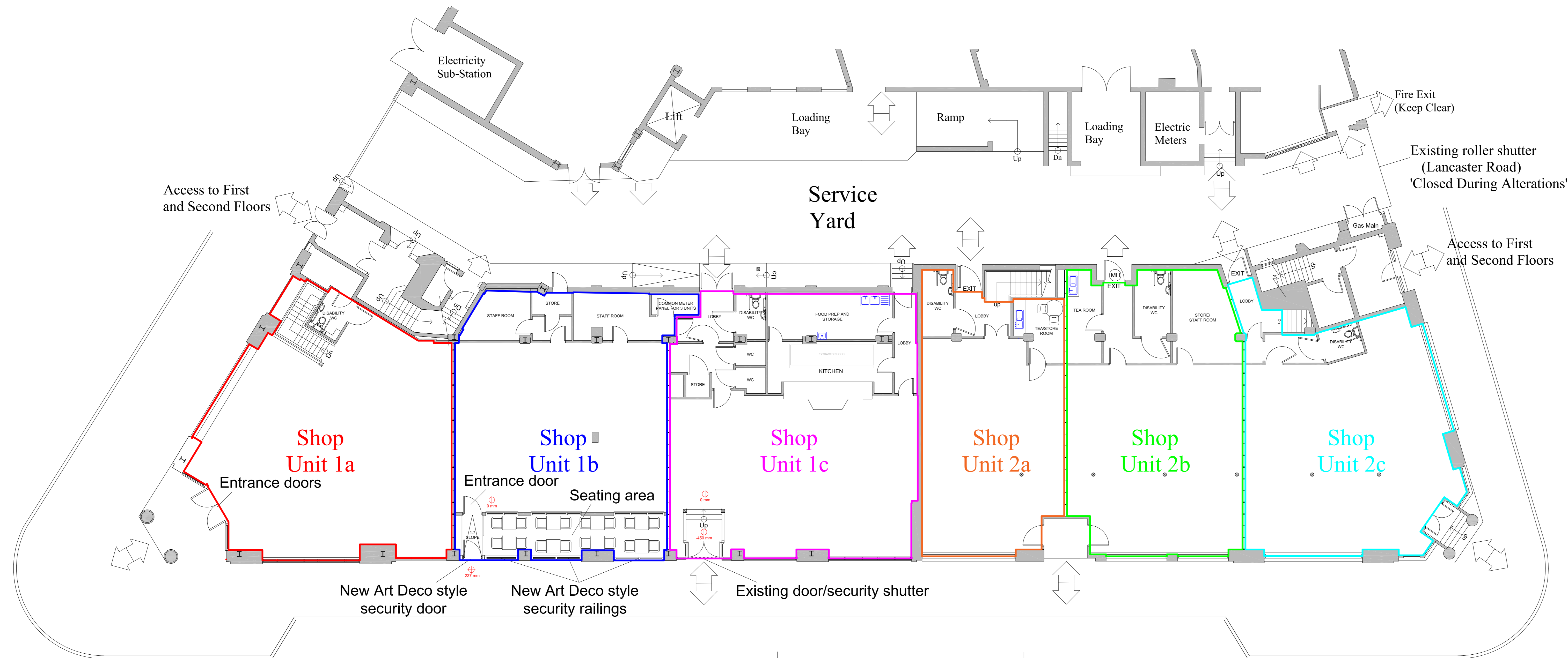
UNIT 1a Unit No.1b Unit No.1c Unit No. 2a Unit No. 2b Unit No. 2c

First Floor	-	-	- (473.9 sq. ft.)	44 sq. m.	-	-
Ground Floor	146 sq. m. (1,573 sq. ft.)	147 sq. m. (1,582 sq. ft.)	166.8 sq. m. (1,795.8 sq. ft.)	95.1 sq. m. (1,023.8 sq. ft.)	123.48 sq. m. (1,329 sq. ft.)	121.12 sq. m. (1,303.8 sq. ft.)
Basement	74.13 sq. m. (798 sq. ft.)	-	-	-	-	126.14 sq. m. (1,357.8 sq. ft.)
TOTAL	220.13 sq. m. (2,371 sq. ft.)	147 sq. m. (1,582 sq. ft.)	166.8 sq. m. (1,795.8 sq. ft.)	139.1 sq. m. (1,497.7 sq. ft.)	123.48 sq. m. (1,329 sq. ft.)	247.26 sq. m. (2,661.6 sq. ft.)



Unit 2a

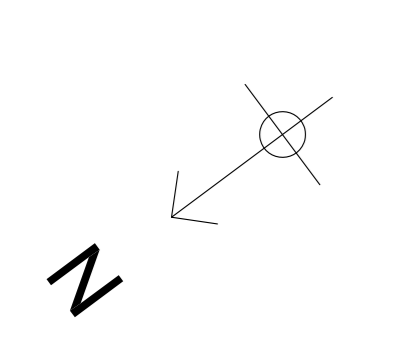
FIRST FLOOR



REGENT STREET
GROUND FLOOR



Shop Unit 1a
BASEMENT



 High Cross, Lancaster Road, Hinckley, Leicestershire, LE10 0AW. Tel: 01455 632777 Fax: 01455 633503			
Client DRE Group Limited High Cross, Lancaster Rd. Hinckley, Leicestershire	Project Proposed Redevelopment Of High Cross Building. Regent St. Hinckley	Scale 1:100 @ A0 site size	Dim. By CPL
Title Proposed Plans for New Unit Nos. 1a, 1b, 1c, 2a, 2b and 2c	Dwg. No. FP2.07-05-004-5	Date Jan 20	Rev. B
SUBJECT TO CONTRACT. WITHOUT PREJUDICE			