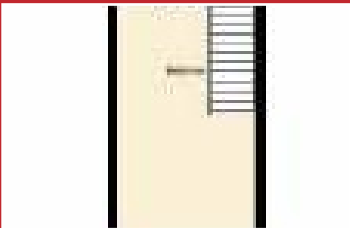
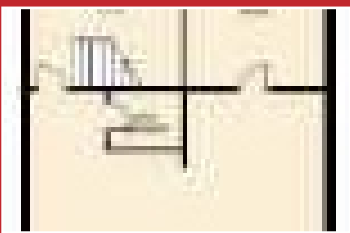


REID & ROBERTS

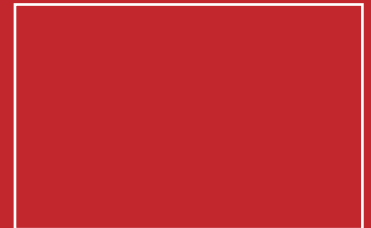
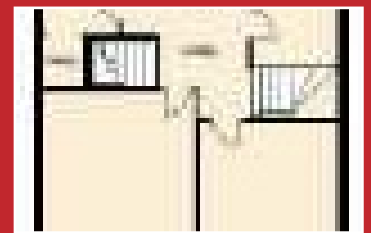
INDEPENDENT ESTATE & LETTING AGENTS

4-6 Well Street, Holywell, CH8 7PL

Offers In The Region Of
£115,000



- Commercial Property
- Two Store Rooms
- Kitchen Area & Wash Room
- Residential Living Space
- Three Bedrooms
- Lounge/ Dining Room
- Kitchen
- Shower Room & Utility



4-6 Well Street, Holywell, CH8 7PL

Reid & Roberts Estate and Letting Agents are pleased to offer For Sale the above Three Storey Commercial property with Residential Three Bedroom Living accommodation above. Situated in Holywell Town Centre with accommodation comprising: Shop Floor with two store rooms, kitchen area and W.C./ wash Room. The shop floor and store room benefit from light and power. Access from the ground floor leads to the residential living space where you will find a Utility and W.C. with stairs giving access to the 1st floor where you will find a Lounge/ Dining Room, Kitchen, Two Bedrooms and a Three Piece Shower Room. Stairs give access to the 2nd floor accommodation where you will find Bedroom Three. Situated in Holywell Town Centre, which offers a wide variety of Shops, Schools and Recreational facilities with the A55 close by offering a link up to the main motorway networks throughout the Northwest Region.

* SITUATED IN HOLYWELL TOWN CENTRE *

ACCOMMODATION COMPRISES

Two wooden doors give access to the shop floor.

SHOP FLOOR

7.75m x 6.20m max measurement (25'5" x 20'4" max measurement) Two single glazed sash windows to the front elevation, wall mounted electric meter, gas meter, power points, alarm panel, flourescent strip lights, tiled flooring.

Door into Store Room and storage cupboard, door gives access into living accommodation.

BUILT-IN STORAGE CUPBOARD

1.68m x 1.27m (5'6" x 4'2") With light.

STORE ROOM/ KITCHEN AREA

4.52m x 3.05m (14'10" x 10'0") Stainless steel sink unit and drainer with taps over and a base unit with storage, shelving, power points, flourescent lights, vinyl flooring, door in to W.C.

DOWNSTAIRS W.C.

1.60m x 1.02m (5'3" x 3'4") Two piece suite comprising: Low flush W.C. and a wall mounted sink unit. Vinyl flooring, extractor fan.

UTILITY

4.27m x 3.33m (14'0" x 10'11") Single glazed window to the rear elevation, wall mounted gas Worcester boiler, single panelled radiator, flourescent lighting, tiled flooring.

Stairs lead upto the first floor accommodation, door opens to the rear, door into W.C..

DOWNSTAIRS W.C.

1.52m x 1.19m (5'0" x 3'11") Two piece suite comprising: Low flush W.C. and a wall mounted sink unit. Single glazed frosted window to the rear elevation, tiled flooring.

1ST FLOOR ACCOMMODATION

LANDING

Thermostat, turned stairs upto the second floor accommodation, doors into:

LOUNGE/ DINER

5.26m x 3.58m (17'3" x 11'9") Single glazed sash window to the front elevation, two double panelled radiators, phone point, aerial socket, textured and coved ceiling, wood effect laminate flooring.

KITCHEN

2.64m x 2.36m (8'8" x 7'9") Housing a range of wall and base units with roll top work surfaces, 1 and a ½ bowl stainless steel sink unit and drainer with mixer taps over, built-in electric oven and four ring gas hob with extractor fan over, space for fridge/ freezer, built-in storage cupboard, single glazed window to the rear elevation, spot lights, wood effect laminate flooring.

BEDROOM ONE

6.10m x 3.05m (20'0" x 10'0") Single glazed sash window to the front elevation, double panelled radiator, telephone point, coved ceiling, wood effect laminate flooring.

4-6 Well Street, Holywell, CH8 7PL

BEDROOM TWO

4.45m x 3.25m (14'7" x 10'8") MAXIMUM OVERALL MEASUREMENT

Single glazed window to the rear elevation, double panelled radiator, coved ceiling, wood effect laminate flooring.

SHOWER ROOM

1.80m x 1.07m (5'11" x 3'6") Three piece suite comprising: Corner shower cubicle with wall mounted mains shower, low flush W.C. and a wall mounted sink unit. Single glazed frosted window to the rear elevation, double panelled radiator, extractor fan, tiled walls and flooring.

2ND FLOOR ACCOMMODATION

Door into:

BEDROOM

6.22m x 3.61m (20'5" x 11'10") Single glazed sash windows to the front elevation, single glazed window to the rear elevation, wood effect laminate flooring.

DIRECTIONS

Situated just off Holywell high street next door to Corbett taxi office.

FLOOR PLANS

These floor plans are included as a guide only. It is included as a service to our customers and is intended as a guide to layout. Not to Scale.

VIEWING ARRANGEMENTS

Strictly by prior appointment through Reid & Roberts Estate Agents. Telephone Holywell 01352 711170. Do you have a house to sell? Ask a member of staff for a FREE VALUATION without obligation.

TO MAKE AN OFFER

TO MAKE AN OFFER - MAKE AN APPOINTMENT. Once you are interested in buying this property, contact this office to make an appointment. The appointment is part of our guarantee to the seller and should be made before contacting a Building Society, Bank or Solicitor. Any delay may result in the property being sold to someone else, and survey and legal fees being unnecessarily incurred.

SERVICES

The agents have not tested the appliances listed in the particulars.

MORTGAGE ADVICE

Reid & Roberts Estate Agents can offer you a full range of Mortgage Products and save you the time and inconvenience of trying to get the most competitive deal yourself. We deal with all major Banks and Building Societies and can look for the most competitive rates around. For more information call 01352 711170.

LOANS

YOUR HOME IS AT RISK IF YOU DO NOT KEEP UP REPAYMENTS ON A MORTGAGE OR OTHER LOANS SECURED ON IT.

HOURS OF BUSINESS

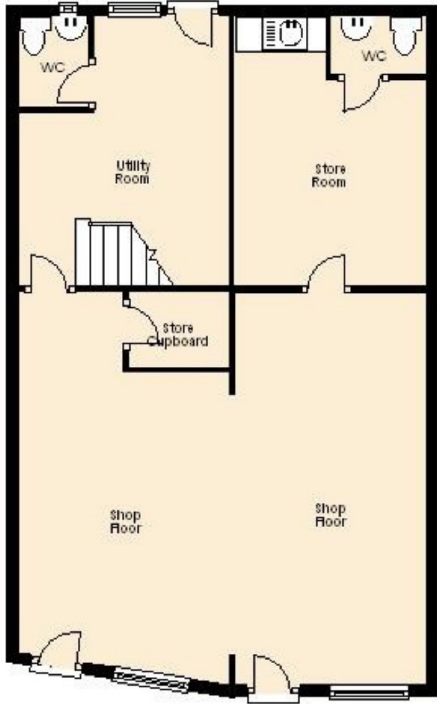
Monday - Friday 9.15am - 5.30pm

Saturday 9.15am - 4.00pm

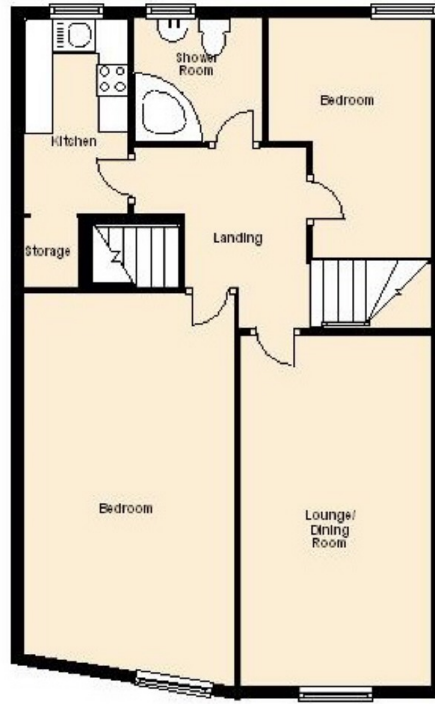
You may download, store and use the material for your own personal use and research. You may not republish, retransmit, redistribute or otherwise make the material available to any party or make the same available on any website, online service or bulletin board of your own or of any other party or make the same available in hard copy or in any other media without the website owner's express prior written consent. The website owner's copyright must remain on all reproductions of material taken from this website.



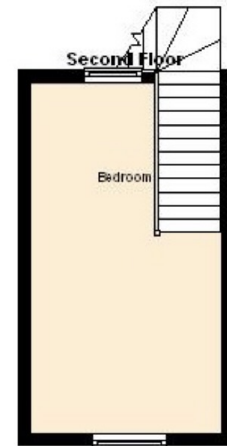
Ground Floor



First Floor



Second Floor



FLINT - FFLINT
Sales Office: 52 Church Street
Flint, Flintshire CH6 5AE
Tel: 01352 762300
Email: flint@reidandroberts.com

FLINT - FFLINT
Lettings Office: 54 Church Street
Flint, Flintshire CH6 5AE
Tel: 01352 763300
Email: lettings@reidandroberts.com

HOLYWELL - TREFFYNNON
10 High Street, Holywell, Flintshire CH8 7LH
Tel: 01352 711170
Fax: 01352 715680
Email: holywell@reidandroberts.com

RHYL
36-38 Bodfor Street
Rhyl, Denbighshire LL18 1AT
Tel: 01745 369700
Email: rhyll@reidandroberts.com

MOLD - YR WYDDGRUG
4 Chester Street, Mold, Flintshire CH7 1EG
Tel: 01352 700070
Fax: 01352 700091
Email: mold@reidandroberts.com

WREXHAM - WRECSAM
6 High Street, Wrexham LL13 8HP
Tel: 01978 353000
Fax: 01978 353999
Email: wrexham@reidandroberts.com