



TO LET

Yard Space
16,350 sq ft (1,518.91 sq m)

- Secure Site
- Adjoining A303
- Tarmac Surface
- Services Available

Amesbury Distribution Park, Amesbury

Yard Adjacent to Unit 9, Amesbury Distribution Park, London Road, Amesbury, SP4 7RT



LOCATION

Amesbury is a market town 9 miles North of Salisbury serving the day to day shopping needs of the resident population of 13,000 and a county population of 510,300 approximately (Source: 2021 Census), including the surrounding villages and the nearby military establishments at Boscombe Down, Larkhill, Bulford Camp and Durrington.

Amesbury Distribution Park is situated on the eastern outskirts of Amesbury, adjacent to and overlooking the A303 dual carriageway and the Solstice Park junction.

DESCRIPTION

The property comprises a storage yard with tarmac surface and partially fenced. An additional storage building and office, totalling 4491 sq ft, may be available, subject to terms.

PLANNING

Interested parties should satisfy themselves as to the suitability of their proposed use. All enquiries should be directed to Wiltshire Council Planning Department, The Council House, Bourne Hill, Salisbury, SP1 3UZ. Tel: 0300 456 0114.

ACCOMMODATION

Yard Area **16,350 sq ft** (1,518.19 sq m)

LEASE TERMS

A new full repairing and insuring lease for a term to be agreed, subject to periodic upward only rent reviews. There is a service charge payable towards the upkeep and maintenance of the common areas of the Distribution Park.

RENT

£20,000 per annum exclusive.

VAT

VAT is payable on the rent.

BUSINESS RATES

To be assessed.*

*Interested parties should satisfy themselves that the Rateable Value/Rates Payable are correct.

SERVICES

More details on request.

Caution: The services and fittings mentioned in these particulars have not been tested and hence, we cannot confirm they are in working order.

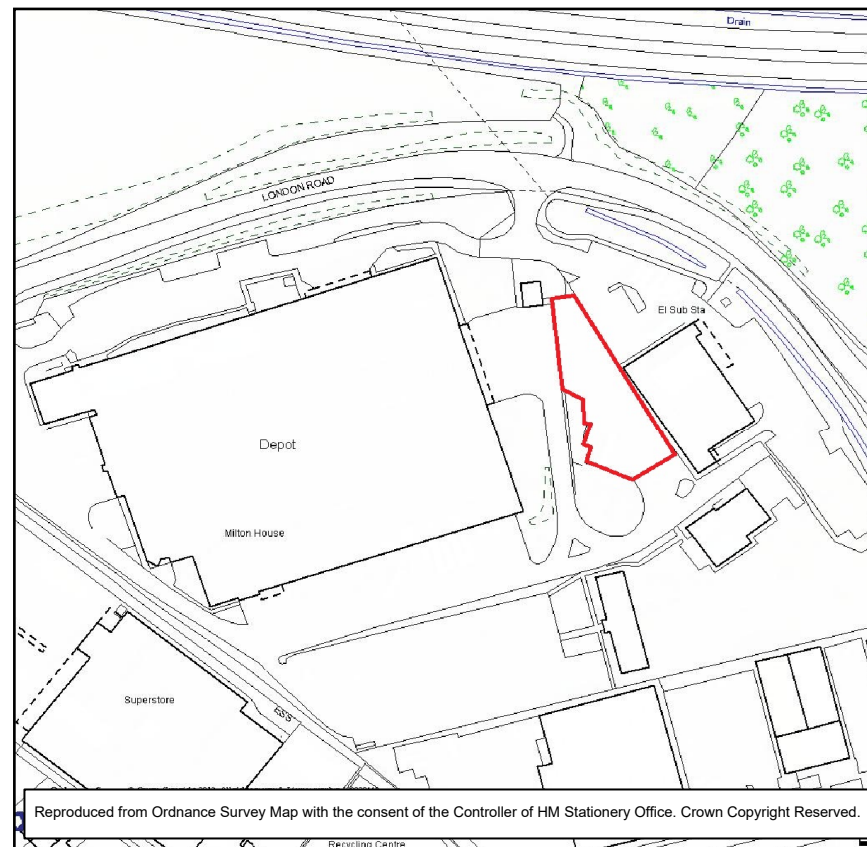
ENERGY PERFORMANCE

An EPC is not required for the site.

VIEWING

Strictly by appointment only.

Ref: DS/JW/16252-9



Money Laundering Regulations Purchasers/Tenants will be required to provide identity information so Anti Money Laundering checks can be undertaken before an offer can be accepted on any property we are marketing.

Code for Leasing Business Premises As an RICS Regulated firm we adhere to the Code for Leasing Business Premises, which recommends you seek professional advice from a qualified surveyor, solicitor or licensed conveyancer before agreeing or signing a business tenancy agreement. The Code is available through the RICS web-site, www.rics.org.

Disclaimer Myddelton & Major for themselves and for the vendors or lessors of this property whose agents they are give notice that:- i) the particulars are set out as a general outline only for the guidance of intended purchasers or lessees, and do not constitute part of an offer or contract. ii) all descriptions, dimensions, reference to condition and necessary permissions for use and occupation, and other details are given without responsibility and any intending purchasers or tenants should not rely on them as statements or representations of fact, but must satisfy themselves by inspection or otherwise as to the correctness of each of them. iii) no person in the employment of Myddelton & Major has any authority to make or give any representation or warranty whatever in relation to this property.