

TBC London

224-226 Tower Bridge Road SE1 2UP

5,461 – 16,343 sq ft

Brand new office space with private terraces and unrivalled views of London

- CAT A offices over 6th and 7th floors
- Impressive views of the River Thames and The City
- 4,454 sq ft private terrace on 6th floor
- 3,257 sq ft communal terrace on 7th floor
- Net Zero Carbon, 100% electric building
- BREEAM Outstanding & WELL Platinum, EPC A
- 1,490 sq ft club room and events space on 7th floor
- New showers, changing rooms, lockers, cycle spaces
- Impressive entrance with café



TBC London - Overview

rebase.



Floor	Area (sq ft)	Rent (per sq ft)	Business Rates (per sq ft)	Service Charge (per sq ft)
7 th	5,461	POA	£28.50	£14.20
6 th	10,882	POA	£28.50	£14.20
TOTAL	16,343			

Description

TBC.London is one of London's most sustainable office buildings, designed with wellbeing in mind. The 6th and 7th floors are available individually or together; both delivered to CAT A specification. The 6th floor includes a 4,454 sq ft private wraparound terrace with panoramic views across London. The 7th floor offers direct access to a 3,527 sq ft communal terrace with an integrated business lounge.

Location

Located moments from Tower Bridge, TBC.London offers exceptional connectivity with easy access to London Bridge station, vibrant riverside amenities, and a thriving business community in the heart of SE1. Blend Family will be soon be opening an iconic food hall within the building.

Terms

Each floor is available by way of sublease or assignment until July 2035. Alternatively, a new lease direct from the Landlord may be negotiated.

Sustainability & Credentials

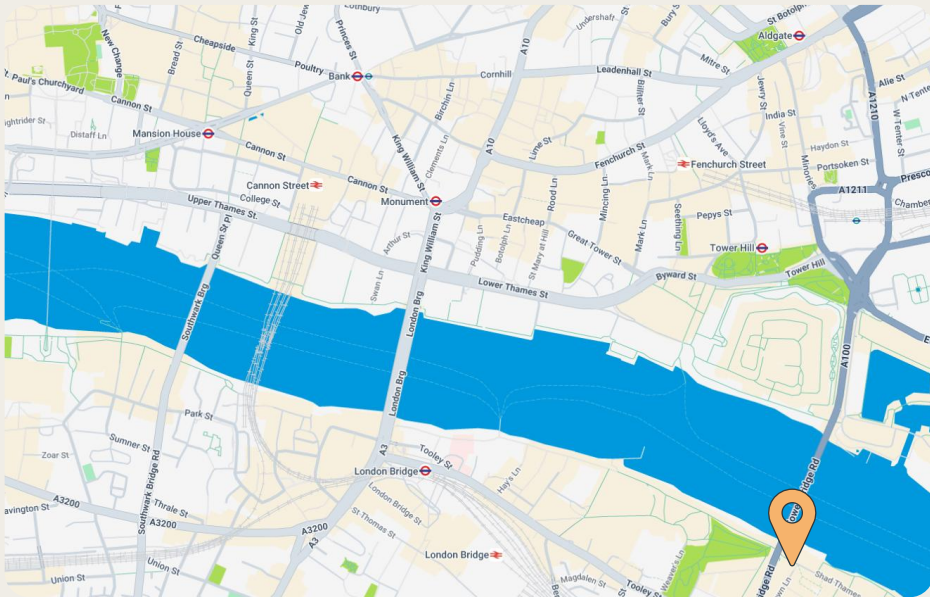
EPC A, BREEAM Outstanding, Nabers 5.5 stars, Wired Score Platinum, Active Score Platinum

Contact:

Charlie Bruxner-Randall
M: +44 7545 958 740
E: charlie@rebasegroup.com

George Haworth
M: +44 7872 960 406
E: george@rebasegroup.com

Nick Brennan
M: +44 7834 782 379
E: nick@rebasegroup.com



TBC London – Building & Reception

rebase.



TBC London – Terrace & Clubroom

rebase.



TBC London – 7th floor

rebase.



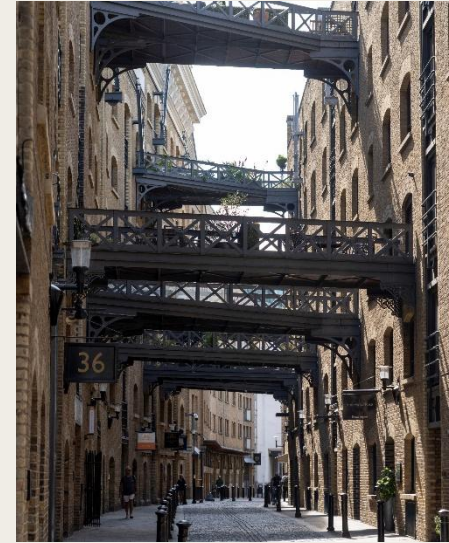
TBC London – 6th floor

rebase.

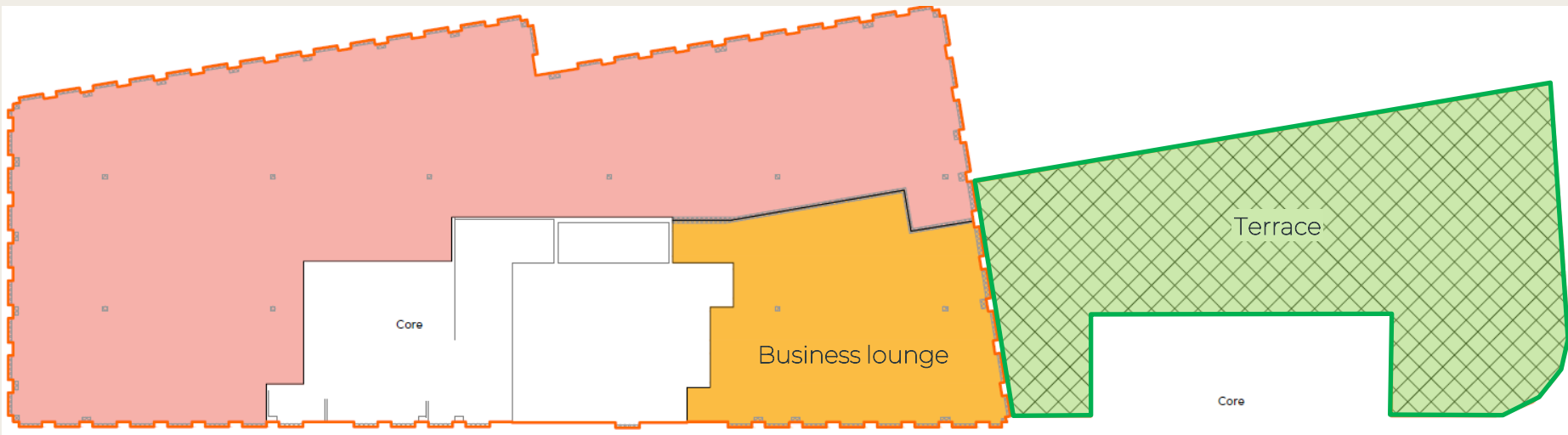


TBC London – Local Area

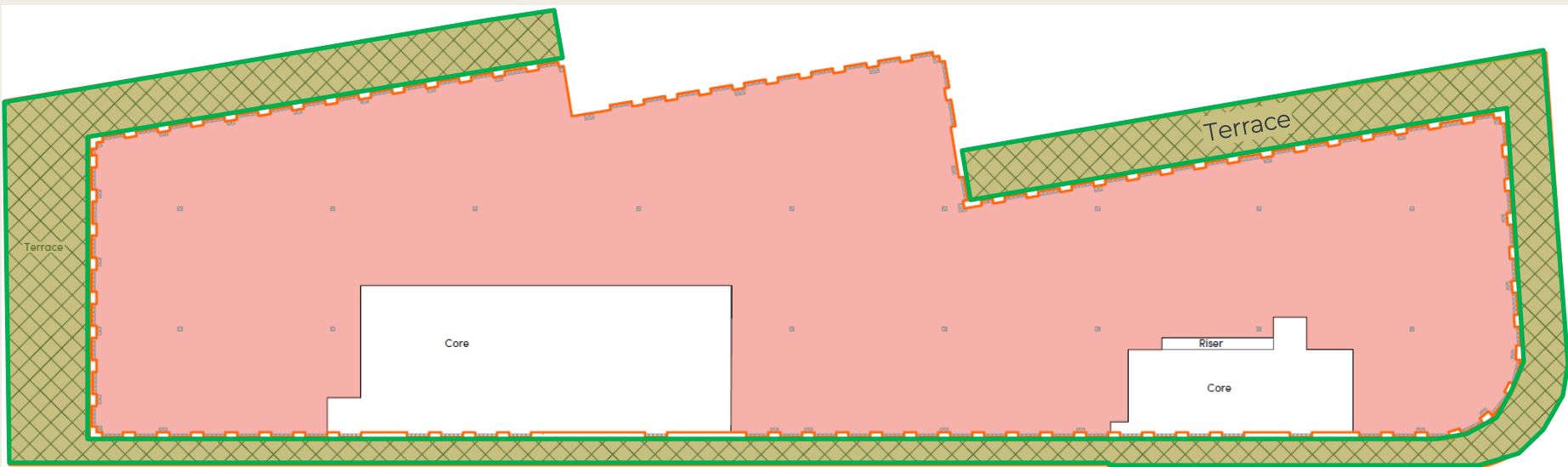
rebase.



TBC London - Floorplans

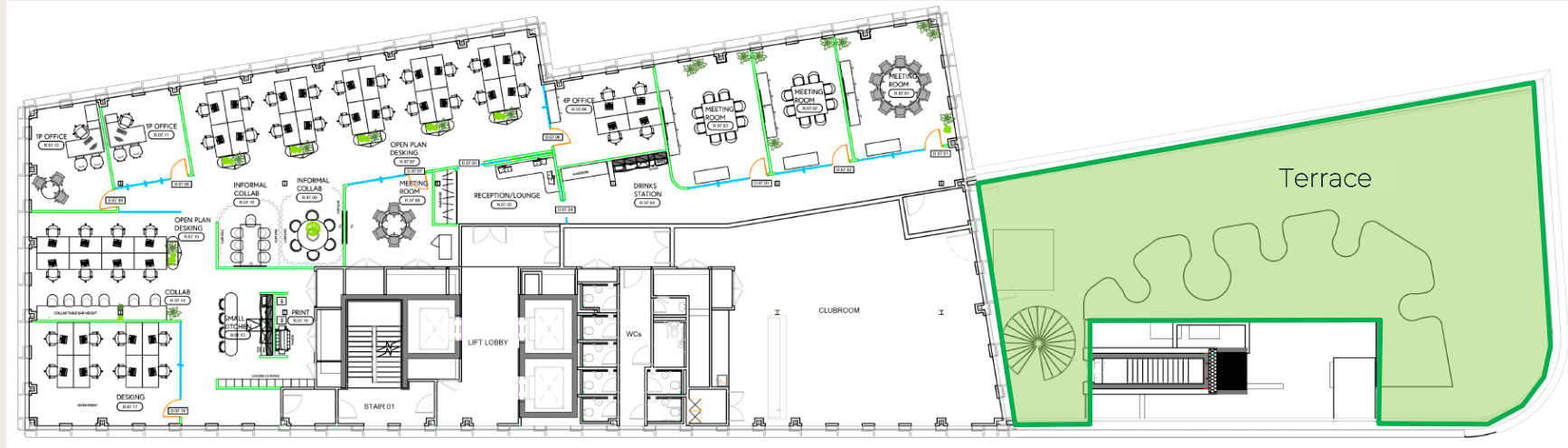


7th floor



6th floor

TBC London – Indicative Fit Out



7th floor




6th floor

For more information or to arrange a viewing please contact the sole agents:



Charlie Bruxner-Randall

Associate Director


 +44 7545 958 740

 charlie@rebasegroup.com



George Haworth

Director


 +44 7872 960 406


 george@rebasegroup.com




Nick Brennan

Founding Director

 +44 7834 782 379

 nick@rebasegroup.com

 www.rebasegroup.com