

An aerial photograph of the London skyline at dusk or dawn. The city is partially obscured by a thick layer of low-hanging clouds and mist. Several prominent skyscrapers are visible, including the Shard on the left and the Gherkin in the center. The sky is a mix of deep blues and greys, with some light breaking through the clouds. The overall mood is atmospheric and dramatic.

THE LONBAR

Bank
City of London

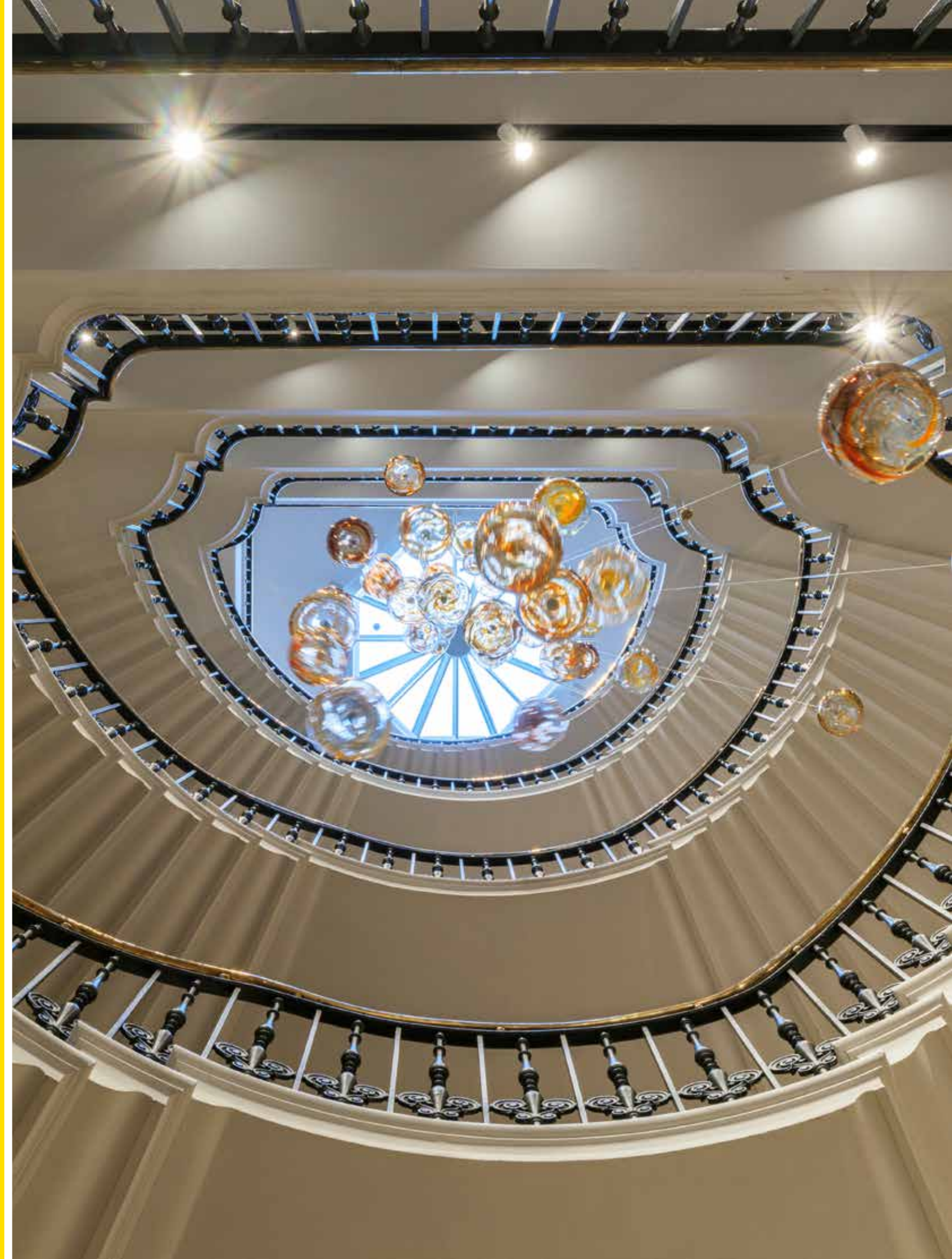


3

This is the spot

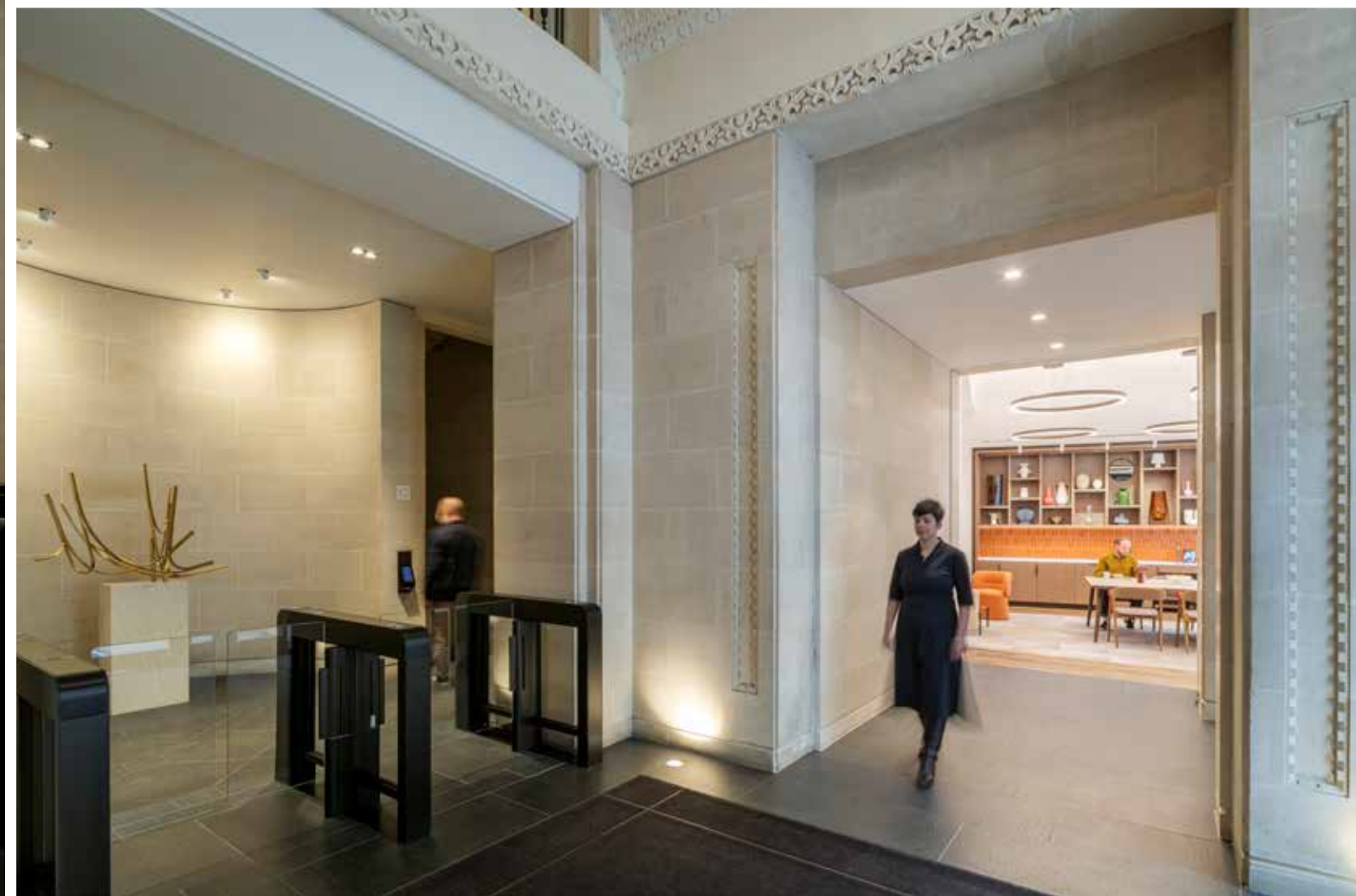
3 Lombard Street, a striking Grade II listed City building, has been remodelled and repurposed for today's tenants. Adjacent to The Mansion House and facing the Bank of England and Royal Exchange, it reflects the global power and influence of the City. With its Byzantine features and elegant curved façade, it dominates this most prestigious of London's commercial locations.

The Building





ENTRANCE VIEWS





TENANT LOUNGE



POSSIBLE THIRD FLOOR (WEST) LAYOUT



POSSIBLE THIRD FLOOR (WEST) LAYOUT



FOURTH FLOOR (EAST) – PRIVATE TERRACE





From its grand corner position, 3 Lombard Street enjoys striking views over The City's heart at Bank junction.

The second floor is being delivered fully fitted and furnished and is ready for tenant occupation in January 2025

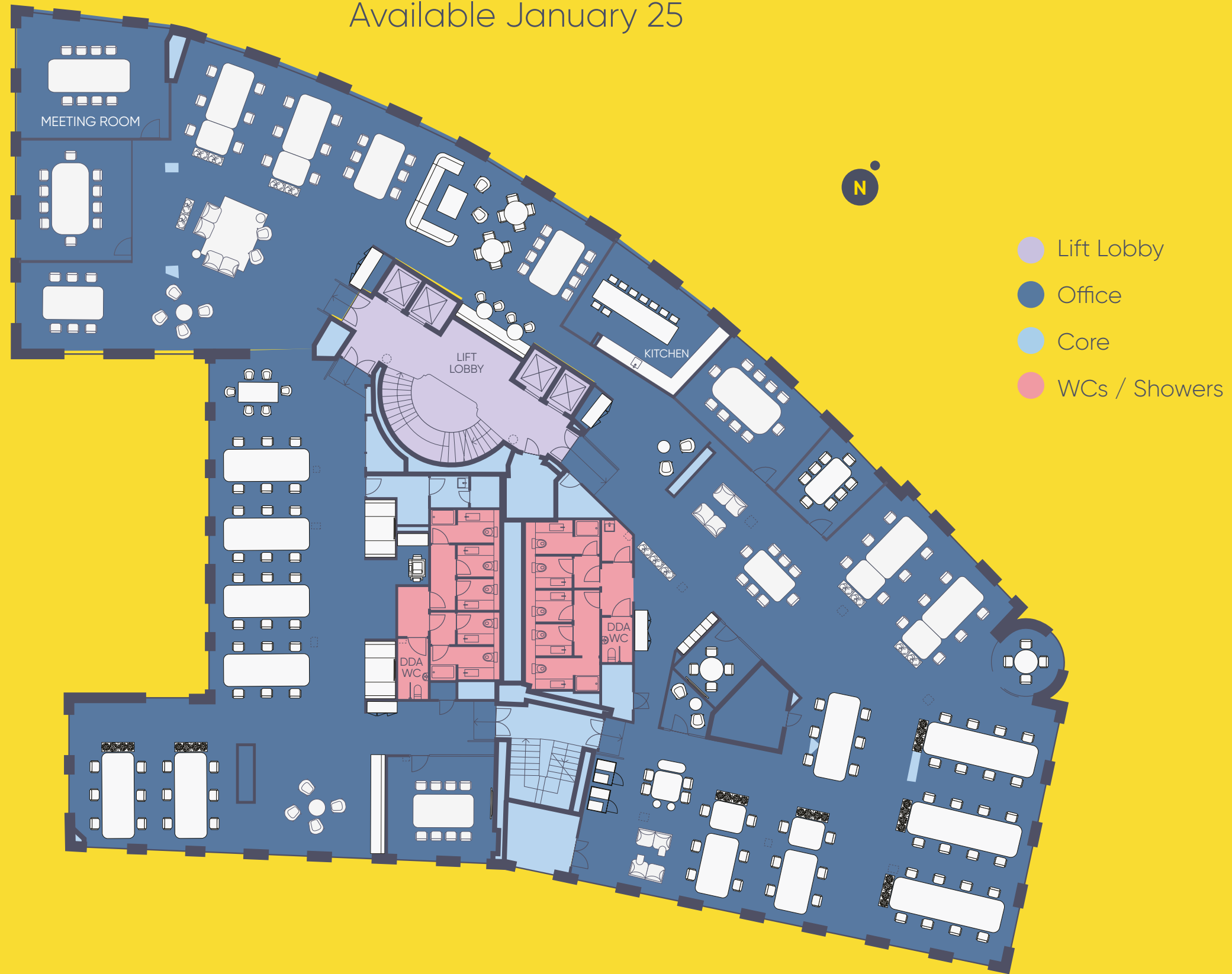
Floor areas

Floor	SQ FT	SQ M	Finish	Availability
Fourth (East)	4,584	426	CAT A+	Let
Third (East)	5,210	484	CAT B	Under Offer
Third (West)	7,277	676	CAT A+	Let
Second	12,229	1,242	CAT B	Jan 2025

CAT A represents a standard, open plan Landlord finish, decorated, with ceilings, services and lighting installed as appropriate.
CAT A+ indicates the possible addition of a kitchen, some fit out, limited furniture and the installation of data and small power wiring.
CAT B represents a fully fitted and furnished unit with small power wiring and live comms wiring installed.

Second

Available January 25



12,229 SQ.FT 1,242 SQ.M

Specification



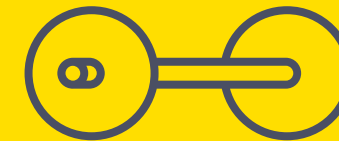
Bookable meeting rooms



Remodelled reception



Concierge



Private gym



Wellness room



Tenant lounge



Terraces on 4th & 5th floors



Air conditioning



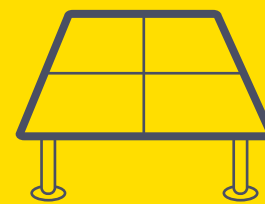
4x passenger lifts



64 bicycle spaces



114 lockers



Raised access floors



Platinum

Central City



3 Lombard Street is spot on for getting around Central London.

Just next door to the revitalised Bank Station, and within walking distance of the Elizabeth Line connection at Liverpool Street Station. Major bus routes radiate from Bank junction, and every London airport is under an hour away. Core parts of London's financial district are easily walkable, and even faster by bike.

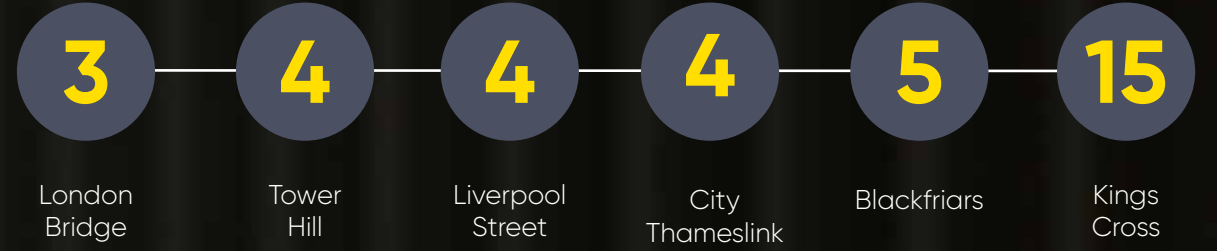
3 Lombard Street is the perfect spot to access all parts of Central London.





ELIZABETH LINE

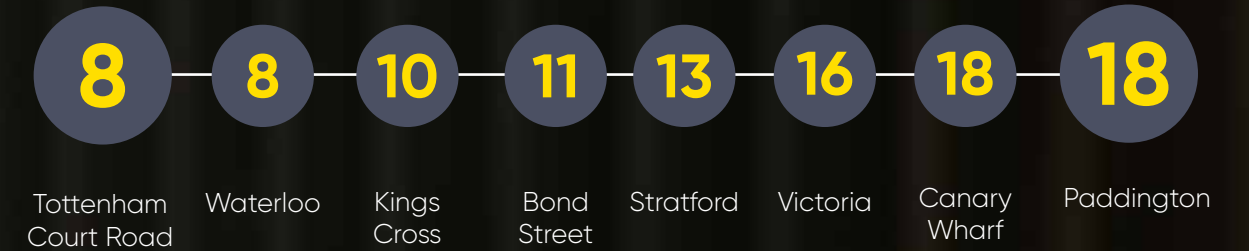
Bike



Foot



Train



Air



*All times in minutes



ANNO ELIZABETHAE R. XIII CONDITVA



Mon - Fri
7 am - 7 pm



Cycle City

3 Lombard St is pedal friendly with secure spaces for standard and Brompton bikes, 5 showers, vanity and hairdryer stations, bicycle charging points, a drying room and 150 lockers

30
St Mary Axe

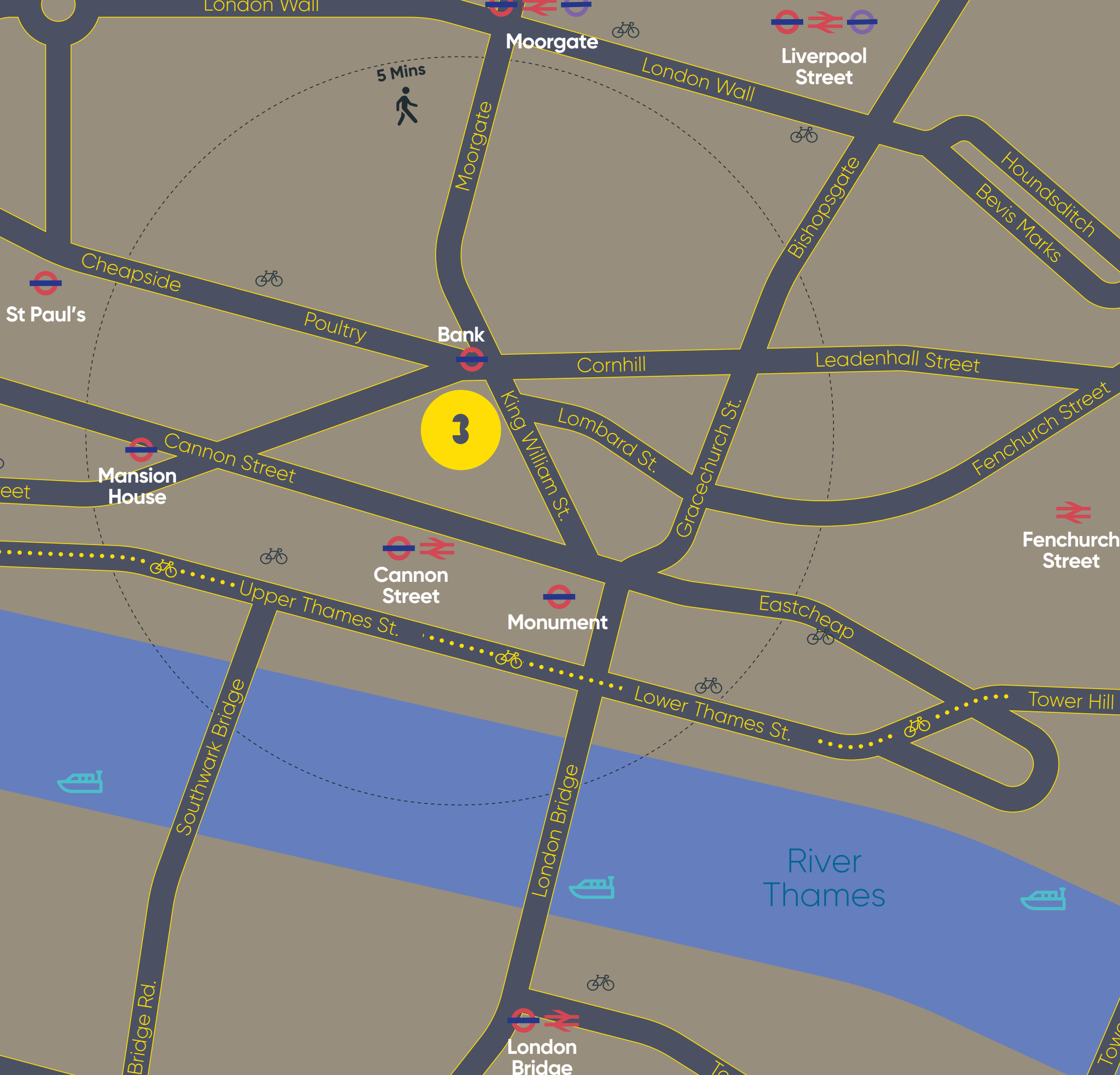
122
Leadenhall Street

20
Fenchurch Street

One Lime Street

THREE LOMBARD





- National Rail 
- Underground Station 
- Elizabeth Line Station 
- Santander Cycle Hire 
- Uber Boat 

Lifestyle City



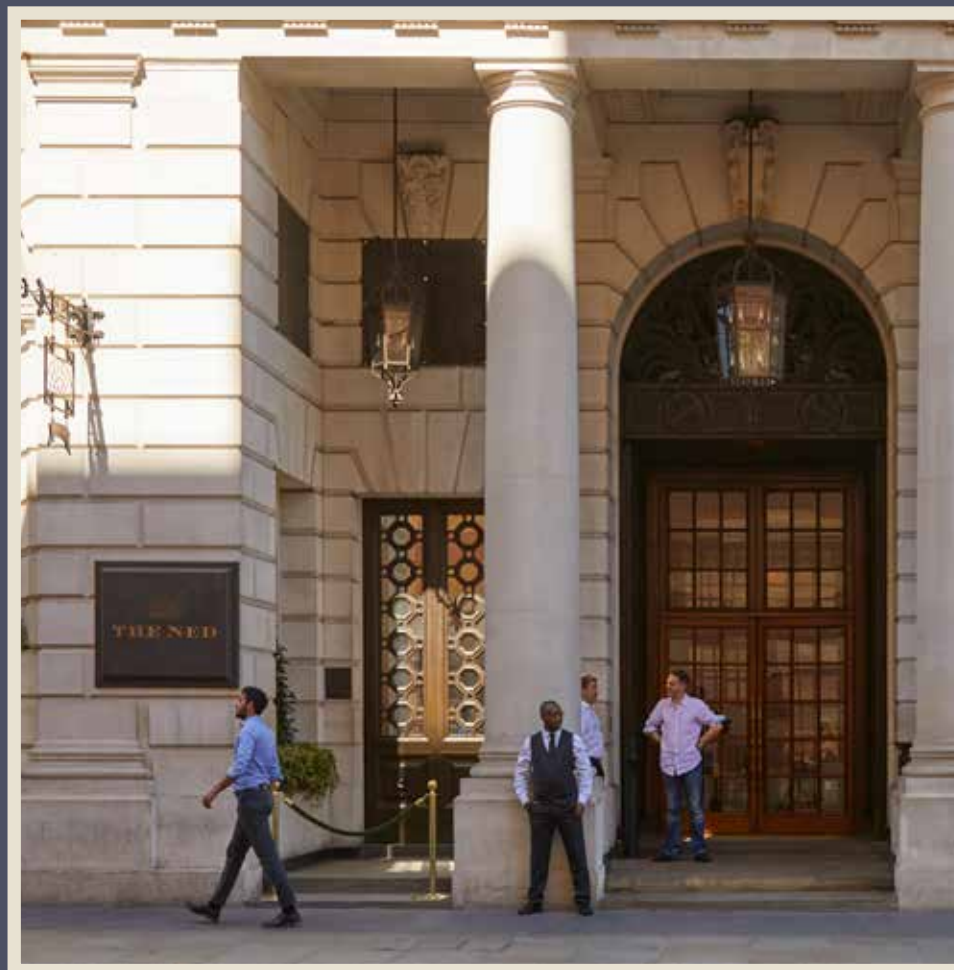
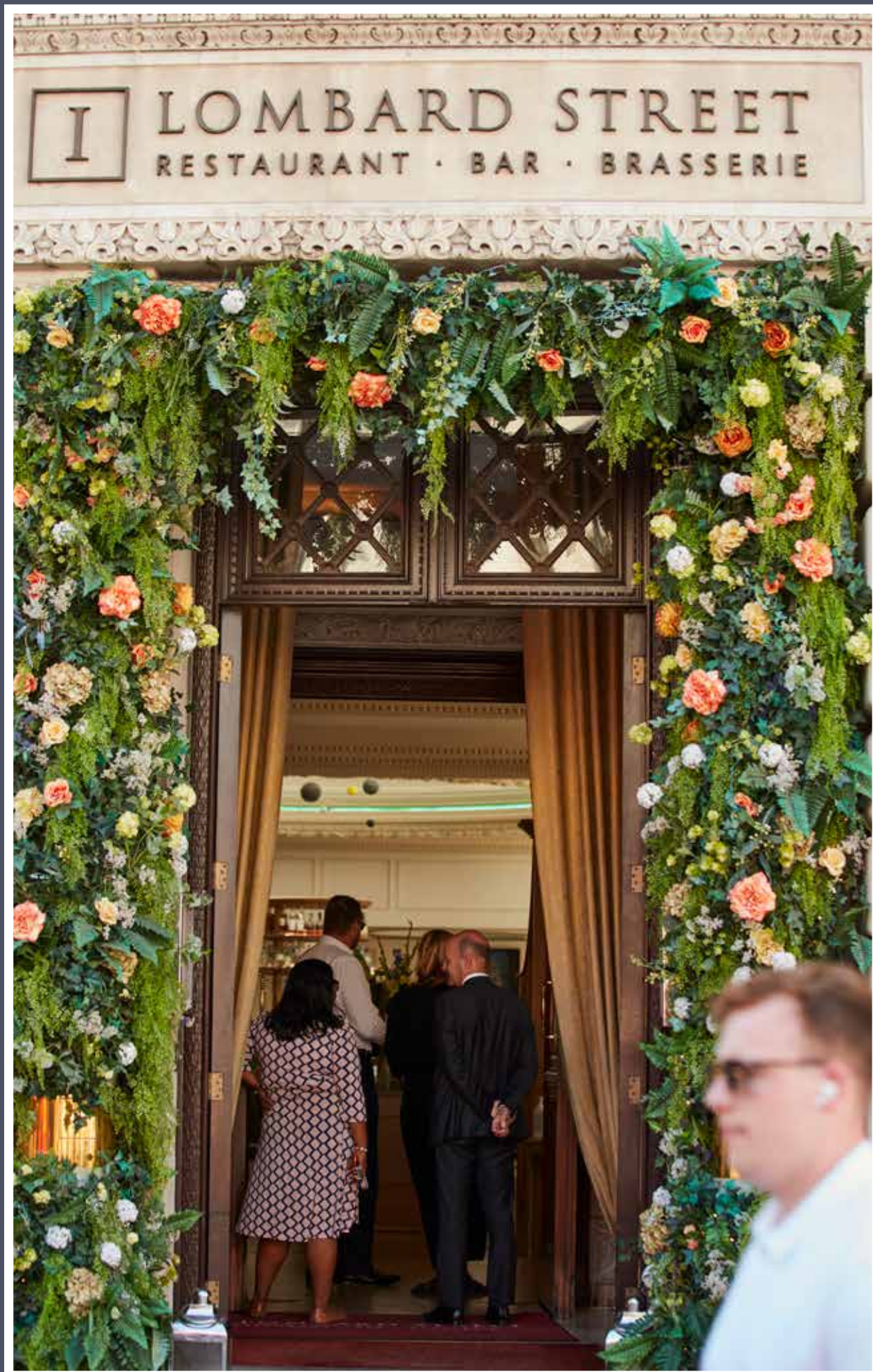
Right in the heart of the City

3 Lombard Street is at the centre of one of London's best food and drinks spots – whether your staff want simple grab and go snacks or easily affordable lunches. Eat elevated burgers at Honest Burgers, where the menu changes with the seasons, or stylish European at buzzing Harry's Bar, a firm favourite for after work food and dinner. Balls Brothers Austin Friars boasts an open kitchen great for team nights out.





Iconic restaurant 1 Lombard Street is on the ground floor of the building, busy at all times of the day with its spacious interior and famous circular bar. Add Hispania London, just down the street, The Ned for relaxed Luxury and The Fortnum's Bar & Restaurant at The Royal Exchange, and you're still only just scratching the surface of what's on offer for a spot to eat or drink.



THREE LOMBARD

Malcolm Trice

07791 049792

m.trice@inglebytrice.co.uk

Oliver Bates

07802 674438

oliver.bates@fishergerman.co.uk

Francis Cundell

07939 598545

f.cundell@inglebytrice.co.uk

Liam Carvalho

07884 414418

liam.carvalho@fishergerman.co.uk

Veronika Sillitoe

07966 029048

v.sillitoe@inglebytrice.co.uk

Doug Gordon

07884 408136

doug.gordon@fishergerman.co.uk

threelombard.com

Subject to contract. Ingleby Trice and Fisher German for themselves and the vendor of this property give notice that these particulars do not form, or form part of, any offer or contract. They are intended to give fair description of the property and whilst every effort has been made to ensure their accuracy this cannot be guaranteed. Any intending purchaser must therefore satisfy themselves by inspection or otherwise. Neither Ingleby Trice and Fisher German, nor any of its employees, has any authority to make or give any further representations or warranty whatsoever in relation to this property. All prices and rents quoted are net of vat. Oct 2024