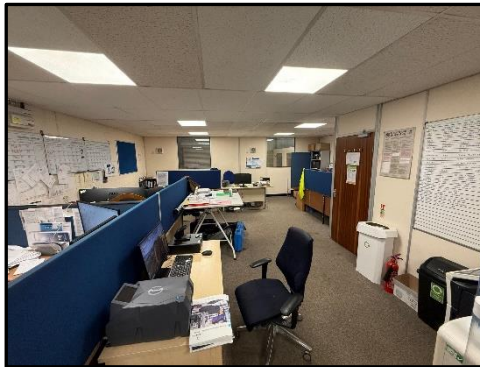


# 14 MILL HALL BUSINESS ESTATE MILL HALL, AYLESFORD, KENT ME20 7JZ



**INDUSTRIAL/WAREHOUSE UNIT**  
**1,876 SQ. FT. (174 M<sup>2</sup>)**  
**PLUS 1<sup>ST</sup> FLOOR MEZZANINE/OFFICES**  
**975 SQ. FT. (90 M<sup>2</sup>)**

**TO LET**

