



TO LET

Air conditioned office with parking adjacent train station

10 Atlantic Square,
Witham, Essex CM8 2TL

RENT

£20,265

per annum exclusive plus VAT

AVAILABLE AREA [NIA]

1,351 sq ft

[125.51 sq m]

IN BRIEF

- » Adjacent to Witham mainline train station
- » Air conditioning
- » Suspended ceiling with recessed LED lighting
- » 1 mile from A12 junction
- » 5 allocated car parking spaces

LOCATION

Atlantic Square is located on Station Road off Avenue Road, close to Witham town centre and opposite Witham mainline train station. Witham Station provides frequent services to London Liverpool Street with an approximate journey time of 45 minutes. Atlantic Square is approximately 1 mile from the nearest A12 junction which provides both north and southbound access.

DESCRIPTION

Atlantic Square forms an office scheme generally comprising two storey terraced office buildings around a landscaped garden area and pond. To the front of the scheme is a private car park.

The property provides two storey, predominantly open plan, office accommodation. The accommodation benefits from air conditioning, suspended ceilings with recessed LED lighting, central heating, and perimeter trunking. There are WC facilities on both floors with a kitchenette on the first floor.

The property has 5 demised car parking spaces.

ACCOMMODATION

[Approximate Net Internal Floor Areas]

- » **Ground Floor:** 632 sq ft [58.68 sq m]
- » **Ground Floor Store:** 23 sq ft [2.15 sq m]
- » **First Floor:** 696 sq ft [64.68 sq m]
- » **Total:** 1,351 sq ft [125.51 sq m]



◀ Colchester / Ipswich /
Felixstowe

Chelmsford / M25 /
London ▶

A12

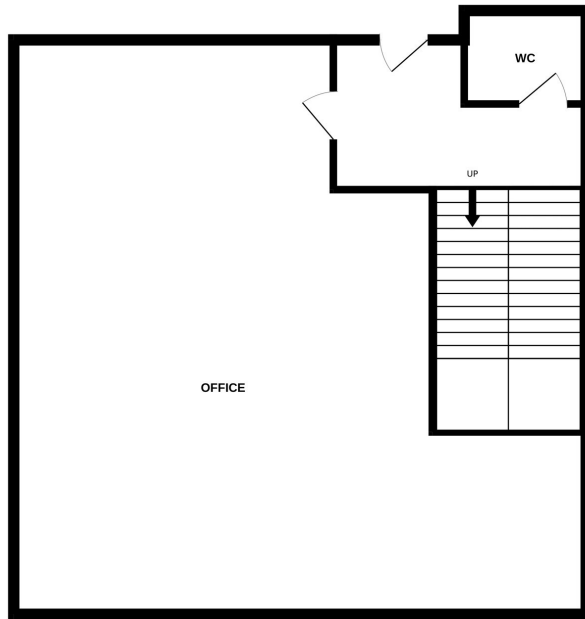
Atlantic Square

Witham Train
Station

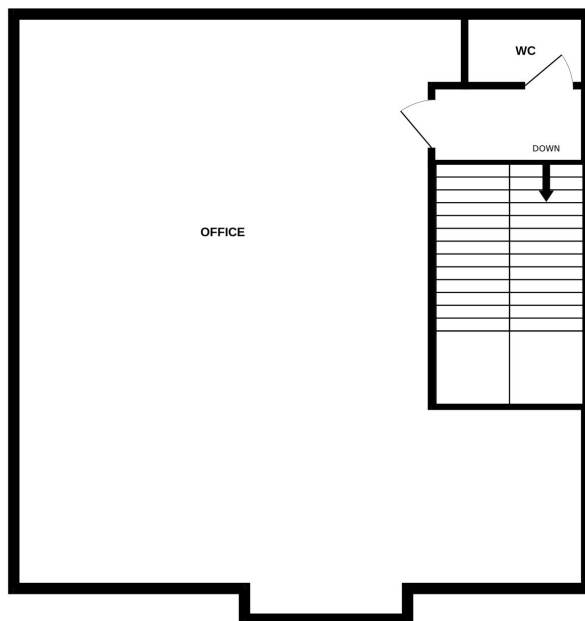


Floorplan - Not to Scale and for Indicative Purposes Only

Ground Floor



First Floor



Whilst every attempt has been made to ensure the accuracy of the floorplan contained here, measurements of doors, windows, rooms and any other items are approximate and no responsibility is taken for any error, omission or mis-statement. This plan is for illustrative purposes only and should be used as such by any prospective purchaser. The services, systems and appliances shown have not been tested and no guarantee as to their operability or efficiency can be given.
Made with Metropix ©2025

EPC

D - 80.

SERVICES

We understand the properties are connected to mains water, drainage, electricity and gas. We have not tested any of the services and all interested parties should rely upon their own enquiries with the relevant utility company in connection with the availability and capacity of all of those serving the properties including IT and telecommunication links.

LOCAL AUTHORITY

Braintree District Council

T. 01376 552525

BUSINESS RATES

The property is entered into the Valuation Office Agency rating list with a rateable value of £15,500, which will give rise to an approximate annual rates liability of £6,696 (2026/27).

We understand that the car parking spaces are assessed under various individual assessments and generally attract a Rateable Value of £150 per space. Interested parties are advised to make enquiries with the local authority.

SERVICE CHARGE

There is an annual service charge towards the upkeep of the estate. Further details are available upon request.

VAT

We understand that the property is elected to VAT.

TERMS

The office is available from mid May 2026 to let on a new, full repairing and insuring lease at a commencing annual rent of £20,265 per annum exclusive plus VAT.

LEGAL COSTS

Each party to bear their own legal costs incurred in this transaction.

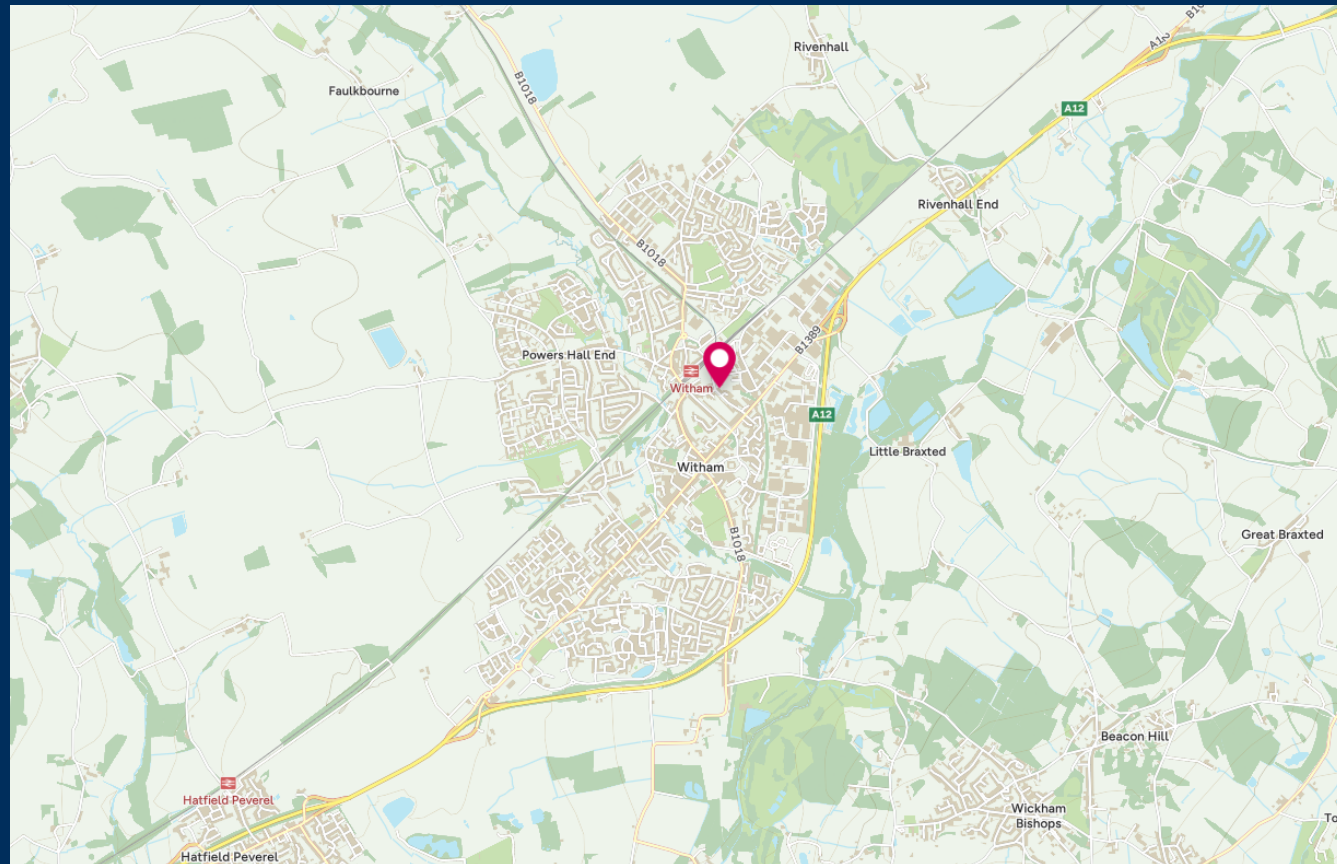
**VIEWINGS STRICTLY BY APPOINTMENT
VIA SOLE LETTING AGENTS:**

**Fenn Wright
64 Newland Street
Witham
CM8 1AH**

**Contact:
John Logan
E: jdl@fennwright.co.uk**

**Scarlett Small
E: scarlett.small@fennwright.co.uk**

**fennwright.co.uk
01376 530135**



Fenn Wright for themselves and for the vendors or lessors of this property whose agents they give notice that:

- i. The particulars are set out as a general outline for the guidance of intending purchasers or lessees; and do not constitute, nor constitute part of, an offer or contract.
- ii. All descriptions, dimensions, references to condition and necessary permissions for use and occupation, and other details are given in good faith and are believed to be correct but any intending purchasers or lessees should not rely on them as statements or representations of fact but must satisfy themselves by inspection or otherwise as to the correctness of each of them.
- iii. The vendor or lessor does not make or give, and neither Fenn Wright LLP nor any person in their employment has the authority to make or give, any representation or warranty whatsoever in relation to this property.
- iv. All statements contained in these particulars as to this property are made without responsibility on the part of Fenn Wright LLP or the vendor/lessor.
- v. All quoting terms may be subject to VAT at the prevailing rate from time to time.
- vi. Fenn Wright have not tested any electrical items, appliances, any plumbing or heating systems and therefore, cannot give any warranty or undertaking as regards their operation or efficiency.

Fenn Wright is a Limited Liability Partnership, trading as Fenn Wright. Registered in England under no. OC431458. Registered office: 1 Tollgate East, Stanway, Colchester, Essex, CO3 8RQ. A list of members is open to inspection at our offices.

OS licence no: TT000311015

Particulars updated May 2026

Fenn Wright

