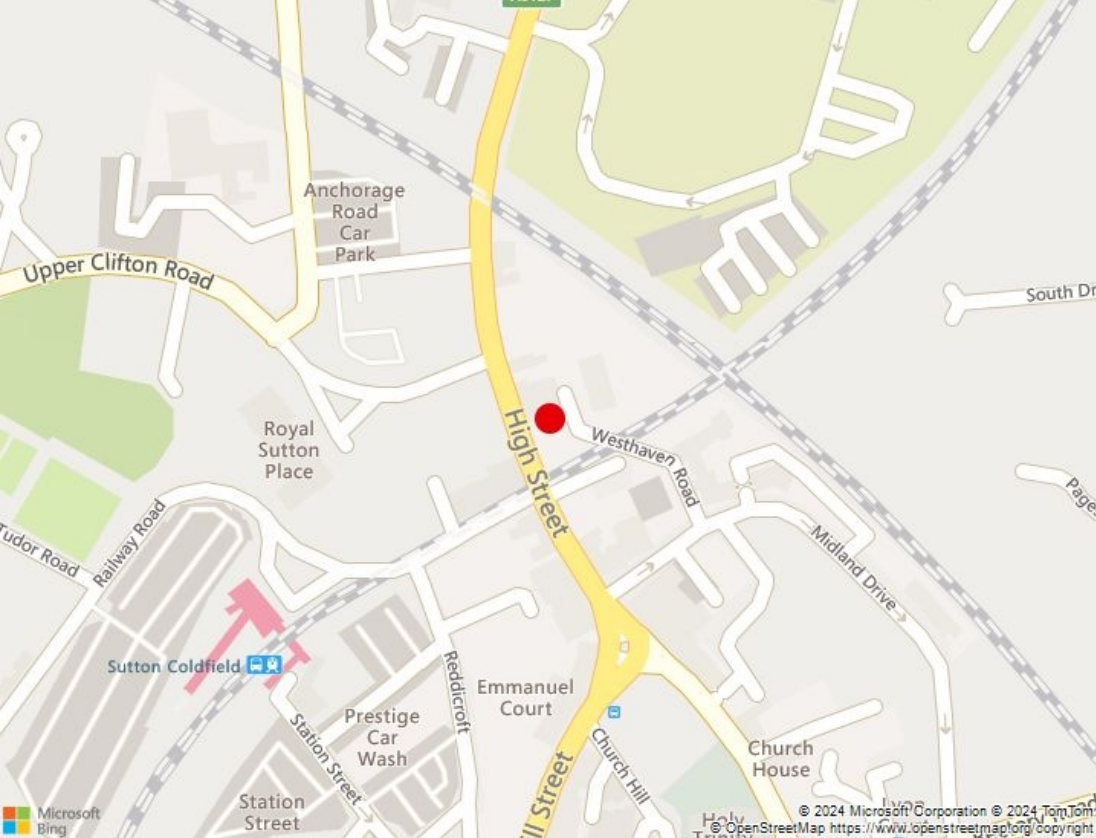


RETAIL UNIT TO LET

28 High Street, Sutton Coldfield, West Midlands, B72 1UP

307 SqFt (28.52 SqM) | £10,750 per annum exclusive





KEY FEATURES

- Prominent main road frontage
- Popular and busy High Street
- Self-contained retail unit
- Walking distance to the train station and town centre
- Suitable for a variety of retail uses

LOCATION

The premises are situated on the busy Sutton Coldfield High Street, immediately adjacent to its junction with Mill Street, within the main commercial area of the Town Centre only a short walking distance from the rail station and Shopping Centre. The High Street also attracts a large number of students from BMet College and Bishop Vesey School.

DESCRIPTION

The property was previously occupied by a barbers and comprises a ground floor retail unit with a kitchen area to the rear, ancillary storage space, WC and access to the rear car park, where there is one space demised.



Area	SqFt	SqM
Ground Floor Retail	189	17.56
Kitchen	87	8.08
Rear Ancillary	31	2.88
Total Floor Area	307	28.52

28 High Street, Sutton Coldfield, West Midlands B72 1UP



TERMS

The premises are available by way of 5 year lease or multiples thereof on an internal repairing and insuring basis subject to a service charge.

ASKING RENT

£10,750 per annum exclusive

SERVICE CHARGE

A Service Charge is payable towards the costs of maintenance of common areas and car parking, currently in the region of £435 per annum.

EPC

Energy Performance Rating C59. Certificate available on request.

BUSINESS RATES

Rateable Value £5,900. Rates Payable (2024/2025) of £2,909 prior to any transitional arrangements or small business relief.

However, businesses may benefit from 100% business rate relief in 2024/2025 on this property.

Interested parties are advised to make their own enquiries with the Local Authority (Birmingham) for verification purposes.

MONEY LAUNDERING

In accordance with Anti Money Laundering Regulations, two forms of ID and confirmation of the source of funding will be required from the successful applicant.

VAT

All figures quoted are exclusive of VAT which will be payable.

VIEWING

Strictly by prior appointment, please contact:



Daniel Woods
DDI: 0121 362 1532
Mob: 07926 904587
E: daniel.woods@burleybrowne.co.uk



David Hemming MRICS
DDI: 0121 362 1530
Mob: 07841 234160
E: david.hemming@burleybrowne.co.uk



0121 321 3441
www.burleybrowne.co.uk



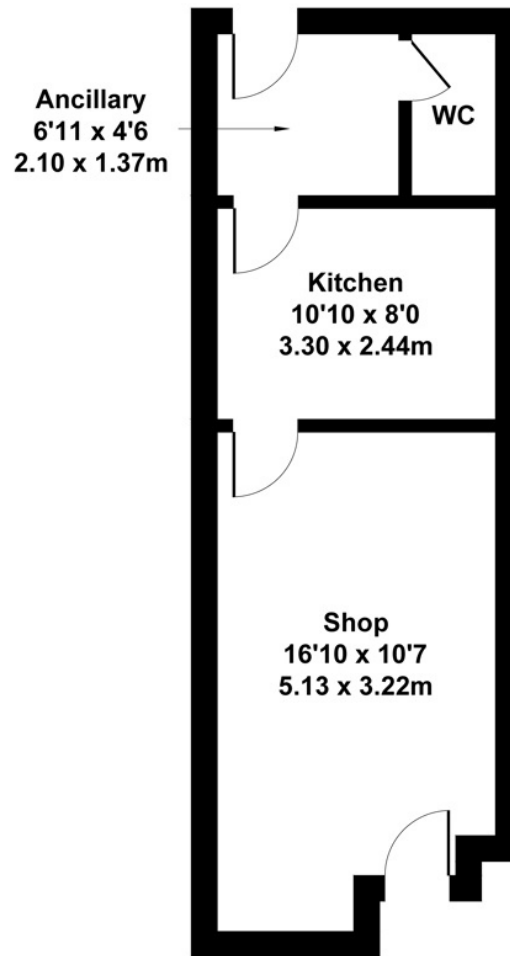
Burley Browne gives notice that, (i) these particulars are intended as a general outline only for the guidance of prospective purchasers or lessees and do not constitute any part of any offer or contract, (ii) the accuracy of any description and or dimensions necessary for use and occupation cannot be guaranteed and any prospective purchasers or tenants should not rely on them as statements or representations of fact but must satisfy themselves by inspection or otherwise; (iii) no employee of the agents has any authority to make or give any representation or enter into any contract whatsoever in relation to the property; (iv) the agents will not be liable in negligence or otherwise for any loss arising from use of these particulars.

Misrepresentation Act 1967. Unfair Contract Terms 1977. Consumer Protection Regulations under Unfair Trading Regulations 2008. The Business Protection Regulations from Misleading Marketing Regulations 2008.

28 High Street, Sutton Coldfield, B72 1UP

Approximate Gross Internal Area

301 sq ft - 28.48 sq m



Not to Scale. Produced by The Plan Portal 2024
For Illustrative Purposes Only.

0121 321 3441
www.burleybrowne.co.uk



Burley Browne gives notice that, (i) these particulars are intended as a general outline only for the guidance of prospective purchasers or lessees and do not constitute any part of any offer or contract, (ii) the accuracy of any description and or dimensions necessary for use and occupation cannot be guaranteed and any prospective purchasers or tenants should not rely on them as statements or representations of fact but must satisfy themselves by inspection or otherwise; (iii) no employee of the agents has any authority to make or give any representation or enter into any contract whatsoever in relation to the property; (iv) the agents will not be liable in negligence or otherwise for any loss arising from use of these particulars.

Misrepresentation Act 1967. Unfair Contract Terms 1977. Consumer Protection Regulations under Unfair Trading Regulations 2008. The Business Protection Regulations from Misleading Marketing Regulations 2008.