



SUMMARY

- Newly refurbished business centre suites
- All inclusive packages, including internet
- Prominent town centre location
- Ideal for start-ups / growing businesses
- Excellent connectivity

DESCRIPTION

Crown House, Worksop is a prominently positioned building, with a new business centre currently undergoing refurbishment. With a range of modern office suites being delivered, the building is being upgraded to provide bright, contemporary workspace suitable for a variety of occupiers, from start-ups to established businesses.

The available suites are designed to offer flexibility and practicality, with a straightforward, ready-to-occupy setup. An all-inclusive rental package covering utilities and internet ensures cost certainty and ease of management for tenants.

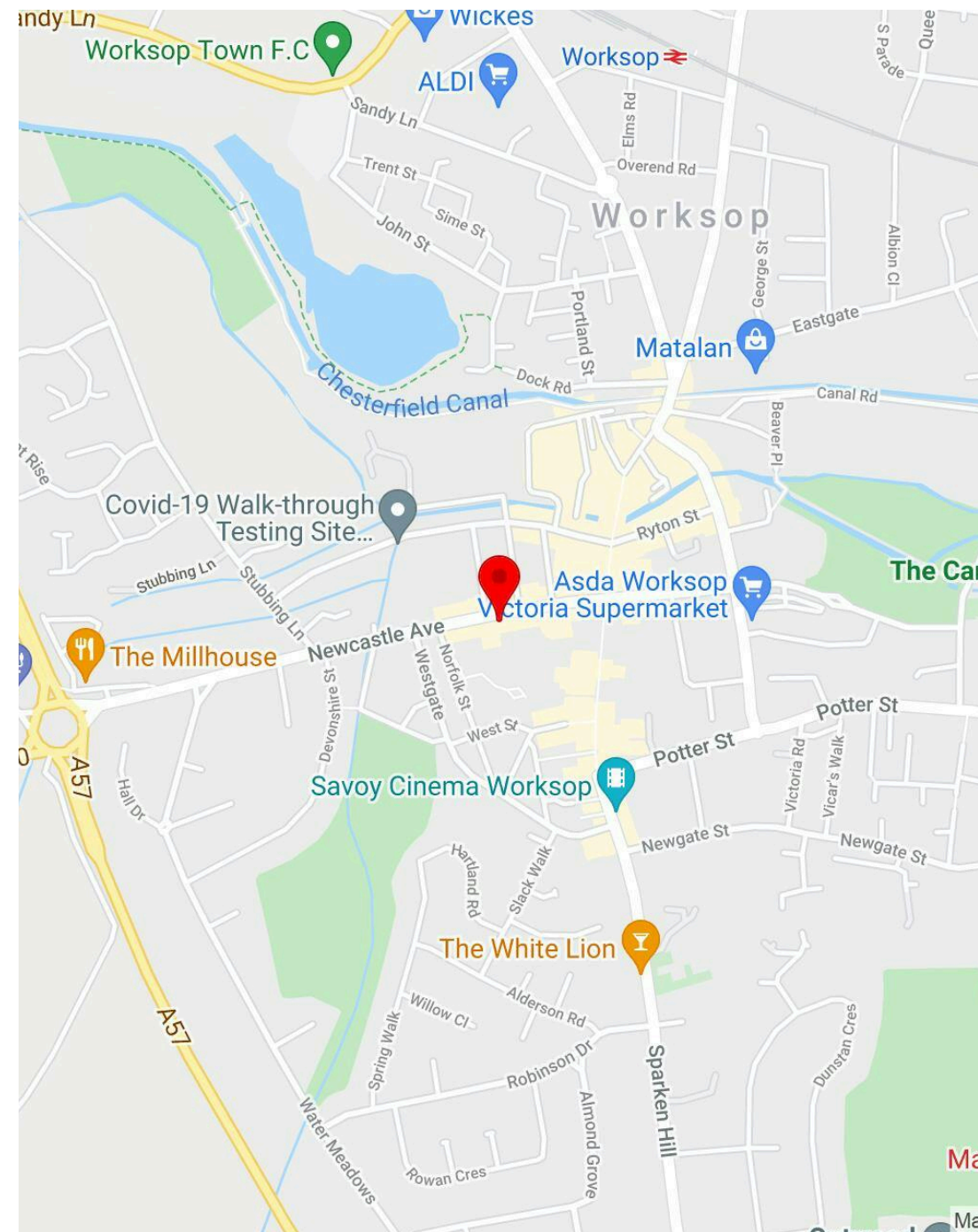
Crown House provides a refreshed and professional working environment, ideal for businesses seeking quality office space within a well-connected town centre location.



LOCATION

Crown House is situated in Worksop town centre, providing convenient access to a wide range of local amenities including shops, cafés, and public services.

The property benefits from good transport links, with easy access to the A57 and A1(M), as well as Worksop railway station offering regular services to Sheffield, Lincoln and Nottingham. Its central position makes it an accessible and practical base for both staff and clients.



Crown House



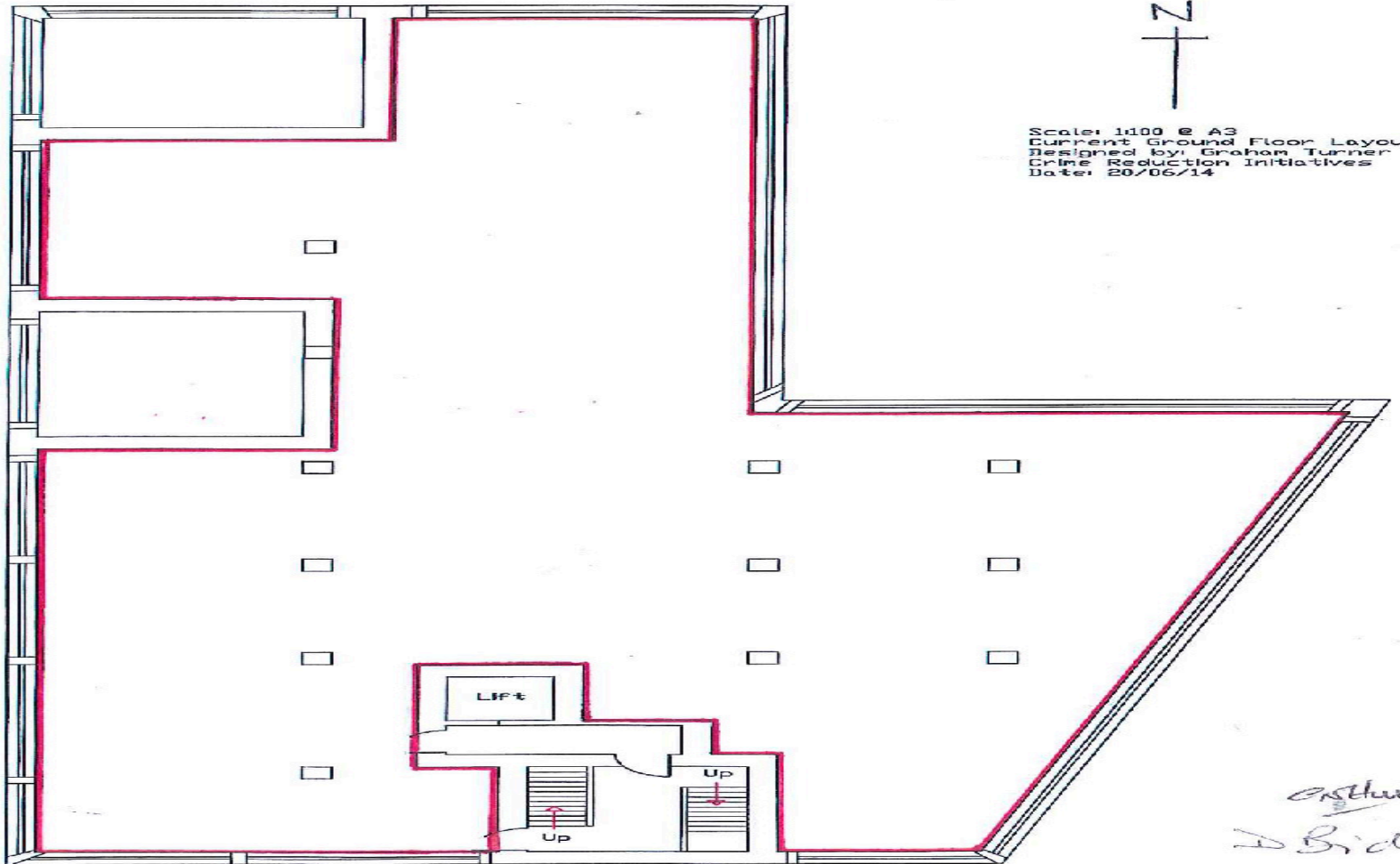
Crown House



GROUND FLOOR CROWN HOUSE FLOOR PLANS.PDF

Plan 1.

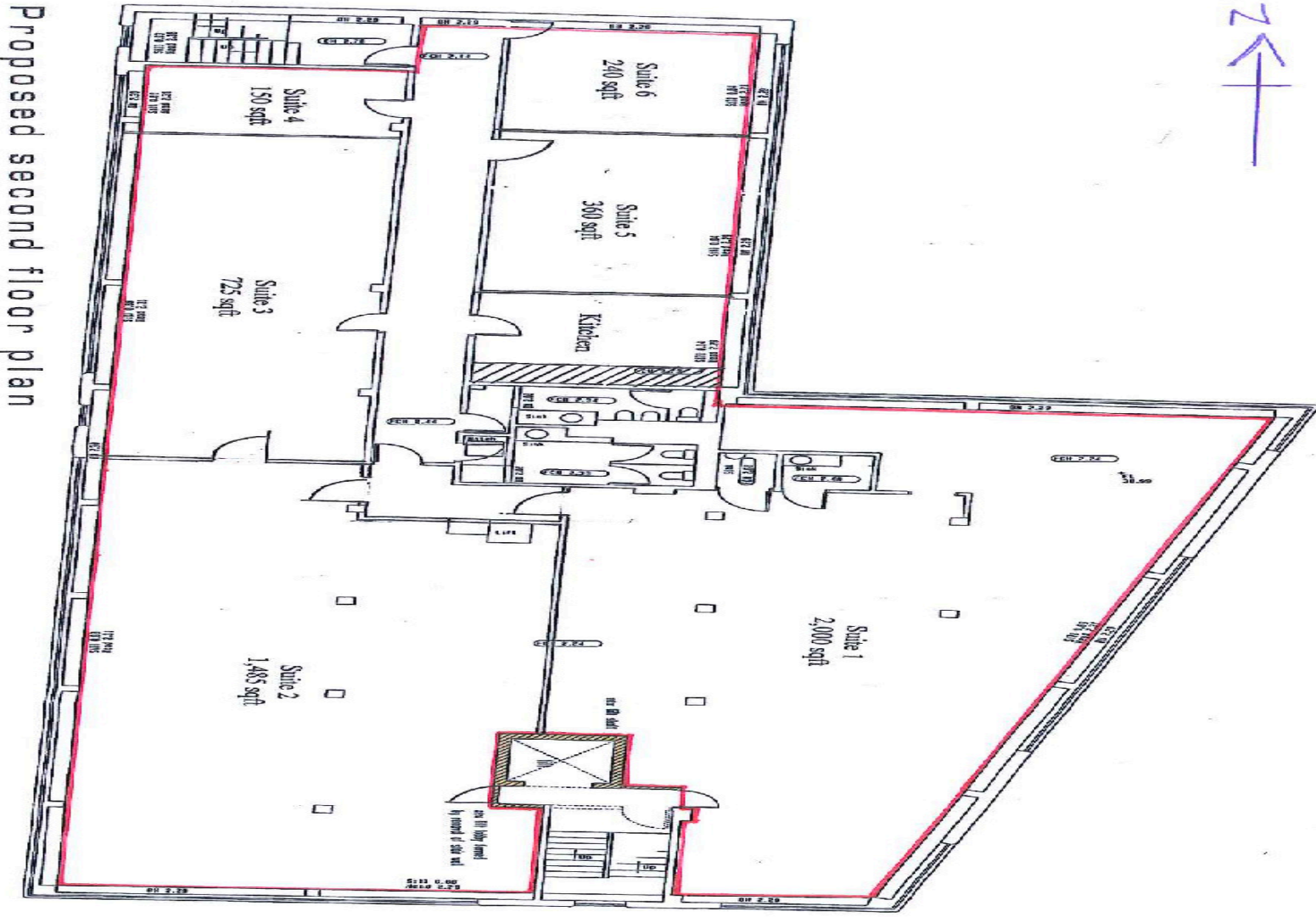
Ground Floor



Scale: 1:100 @ A3
Current Ground Floor Layout
Designed by: Graham Turner
Crime Reduction Initiatives
Date: 20/06/14

Arthur
D Biddle

2ND FLOOR CROWN HOUSE FLOOR PLANS.PDF



Proposed second floor plan



CUBED Property Advisors Limited



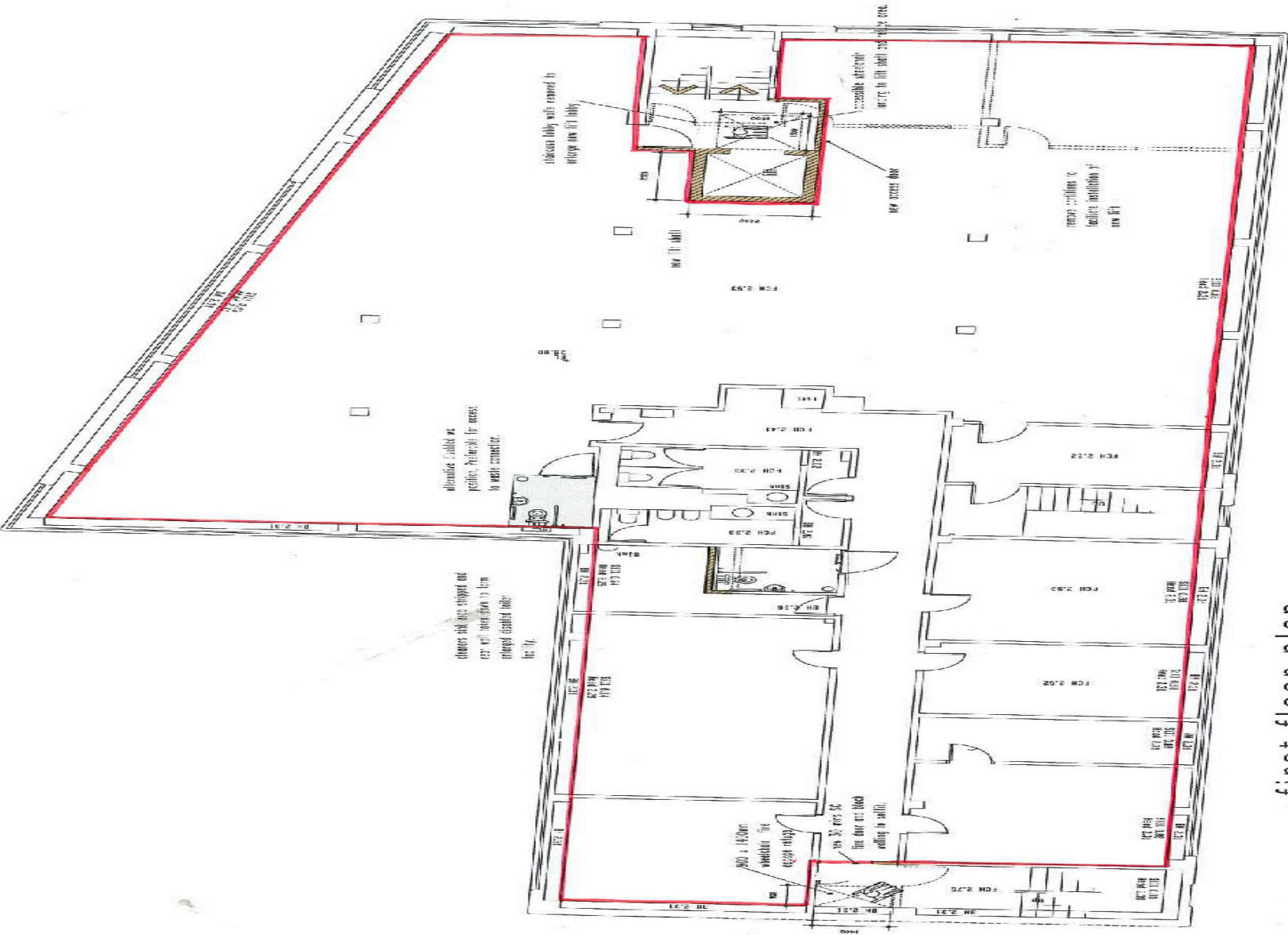
Scale: 1:100 @ A3

Client: Hurstwood Holdings

Title: Proposed Second floor

Drawn: CPAD/16/03

FIRST FLOOR CROWN HOUSE FLOOR PLANS.PDF



first floor plan



CUBED Property Advisors Limited



scale: 1:100 @ 1/3

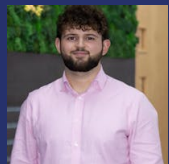
Client: Hurstwood Holdings

Dwg nr: CPA016102

AVAILABILITY

FLOOR/UNIT	DESCRIPTION	SIZE	RENT	SERVICE CHARGE
1st	First Floor	5,801 sq ft	£32,000 /annum	On Application
1st	Suite 1	840 sq ft	£1,260 /month	£140 /month
1st	Suite 2	352 sq ft	£557 /month	£59 /month
1st	Suite 3	240 sq ft	£380 /month	£40 /month
1st	Suite 4	163 sq ft	£258 /month	£27 /month
1st	Suite 5	340 sq ft	£538 /month	£57 /month
1st	Suite 6	247 sq ft	£391 /month	£41 /month
1st	Suite 7	405 sq ft	£641 /month	£68 /month
1st	Suite 8	1,802 sq ft	£2,553 /month	£300 /month

TO ARRANGE A VIEWING, PLEASE CONTACT



Oliver Brown

0161 220 1999 | 07955 283 889

oliver.brown@hurstwoodholdings.com



Robbie Harrocks

0161 220 1999 | 07842421659

robbie.harrocks@hurstwoodholdings.com



HURSTWOOD HOLDINGS

