

# Welcome to Kent House

A Fully Managed workspace  
where your people are our priority.

 14/17 Market Place,  
Fitzrovia, W1W 8AJ

[gpe.co.uk/portfolio/kent-house](https://gpe.co.uk/portfolio/kent-house)



# Contents

03 What's in your building



04 Why us



06 Availability schedule



07 Floorplan



09 Location



14 Get in touch



Download as PDF

Kent House



# An iconic place to do business

Nothing about Kent House is ordinary. From the unmistakable Art Deco building - where stunning original features meet cutting-edge interior design - to its location in the heart of London's West End, there are few more sought-after locations in the capital.



## Cycle storage

Super-secure cycle spaces for your beloved two wheeled companion.



## Shower cubicles

Premium end of journey facilities, including shower amenities on each floor.



## On-site receptionist

Providing a warm welcome you and your visitors.

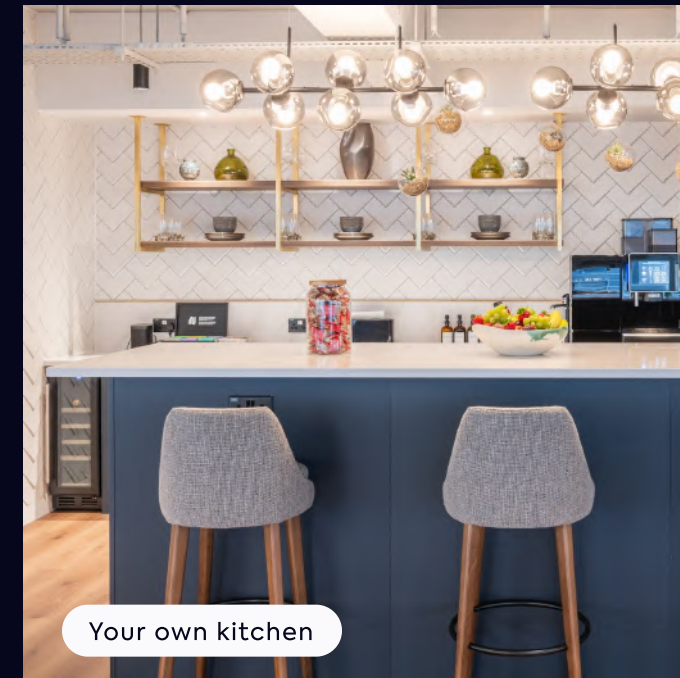


## sesame® workplace app

For contactless access, plus other features depending on your needs.



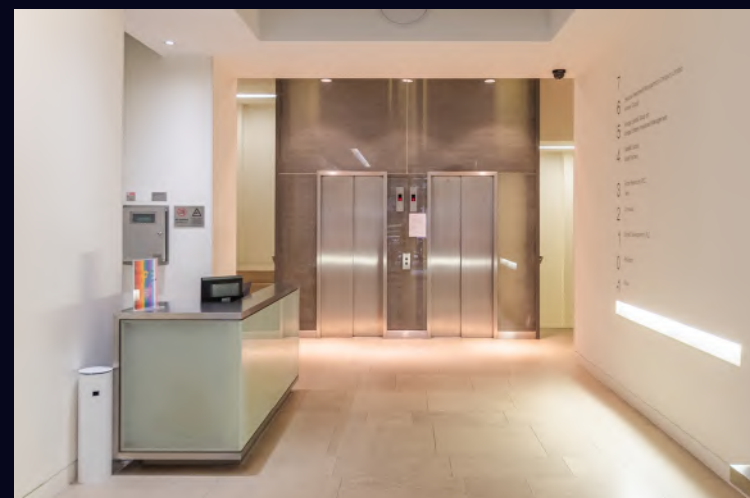
Your own meeting rooms



Your own kitchen



Break out space to collaborate with colleagues



Receptionist to welcome you and your visitors



What's in your building

# It's all included in one bill, no hidden extras



## 6 reasons to choose GPE Fully Managed



### 1 – Fully managed and fully yours

Say hello to a furnished workspace that's exclusively yours. Our Fully Managed service is a truly hassle-free experience.

[How we make it hassle-free](#)



### 2 – All-in-one bill with no hidden extras

Say goodbye to multiple bills. Each month you'll receive one all-inclusive bill from us, and, your bill remains fixed for your contract period.

[See what's included](#)



### 3 – Relax, you're in safe hands

We've been doing this for a long time. Our in-house experts curate the perfect experience, so you can enjoy market-leading workspaces. We own and manage our buildings, so you'll always deal directly with us.

[Learn more about us](#)



### 4 – Plug in and go – your tech's all sorted

You get safe, secure and ultra-fast wireless connectivity so you can work seamlessly from day one, with IT help on-hand. Everyone gets access to sesame™, your award-winning workspace app.

[Head over to the tech](#)



### 5 – Working towards a better world

As an environmentally-conscious company, we prioritise sustainability and refuse to engage in greenwashing. We're working towards being a net zero carbon business by 2040.

[How we're reducing our impact](#)



### 6 – Exceptional service as standard



Your people are our priority. It's why we've developed our customer promise – the values by which we operate – so we can deliver you a great experience.



# Availability schedule

Let's get down to the details...

The details

Floor	Configuration	Max occupancy	Sq ft	Floorplan	Key features	Availability
<b>1st Floor</b>	46 desks + 3 meeting rooms + 1 private office	62	3,995		Art deco feel with multiple breakout spaces	 June 2024

# Floorplan

## 1st Floor, Kent House

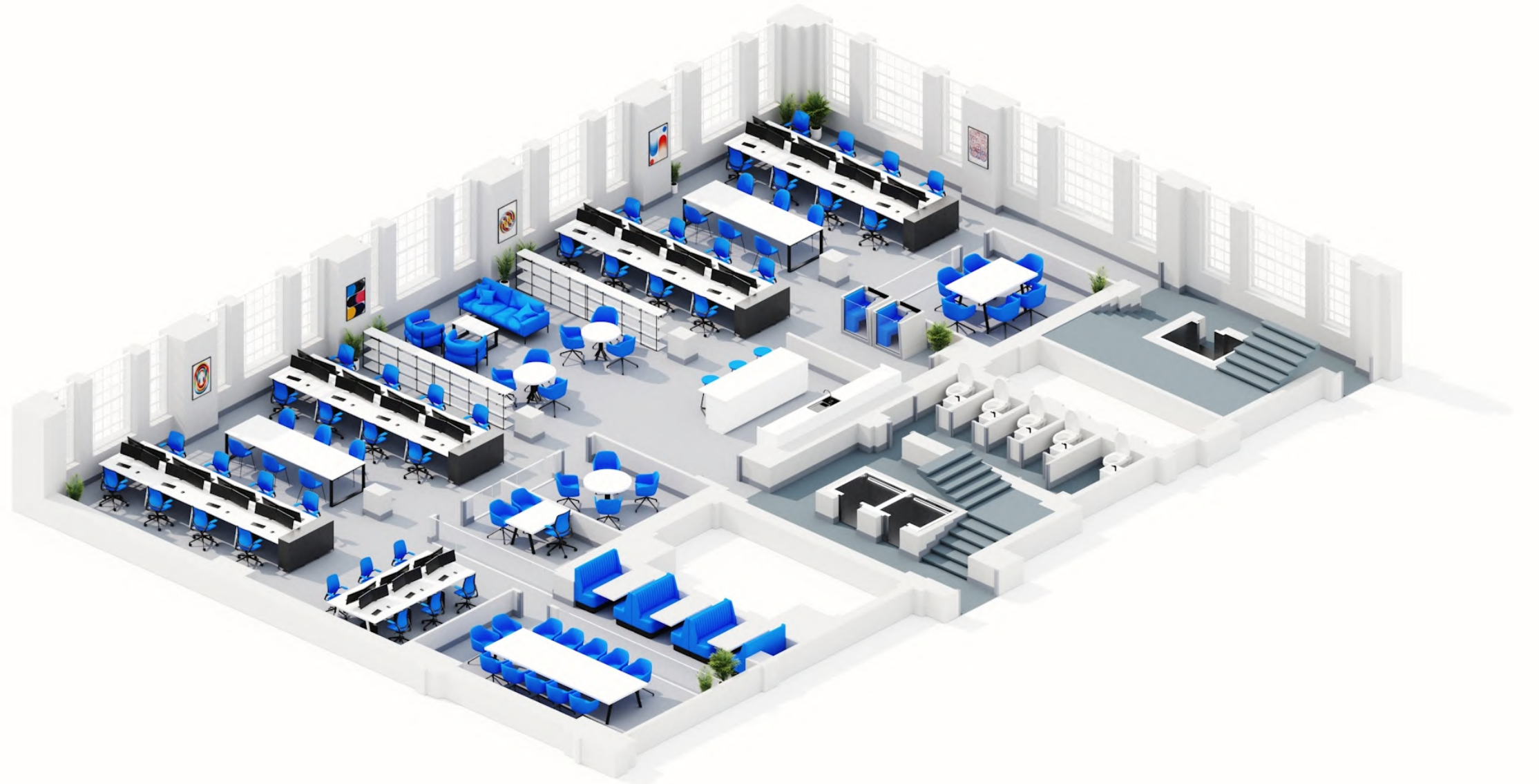
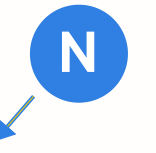
-  Fitzrovia
-  3,995 sq ft
-  62 maximum occupancy
-  46 current desks
-  3 meeting rooms
-  Breakout area
-  Private office
-  2 phone booths
-  Kitchen
-  Wine fridge
-  Coffee machine



[Contents](#)

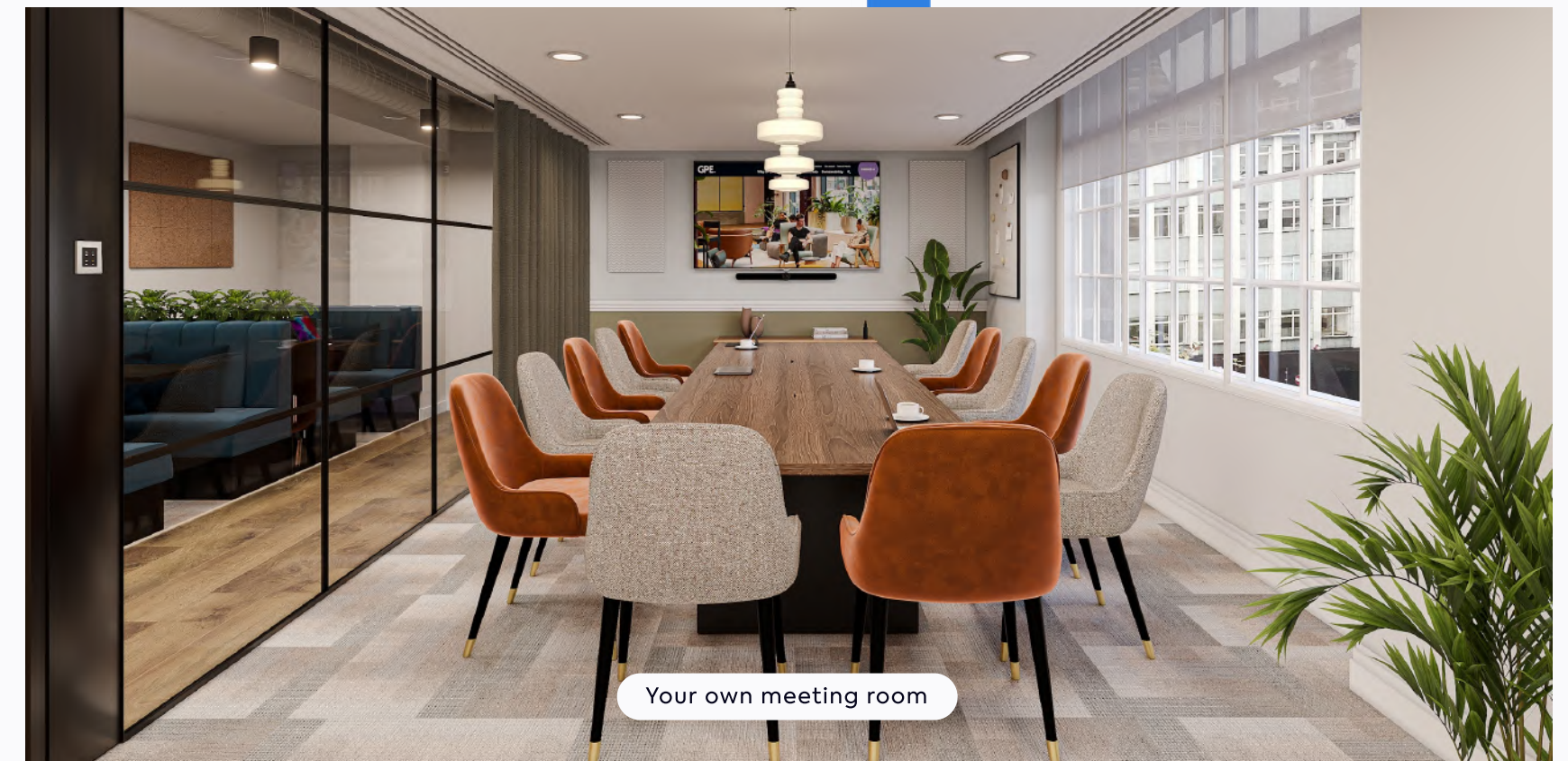
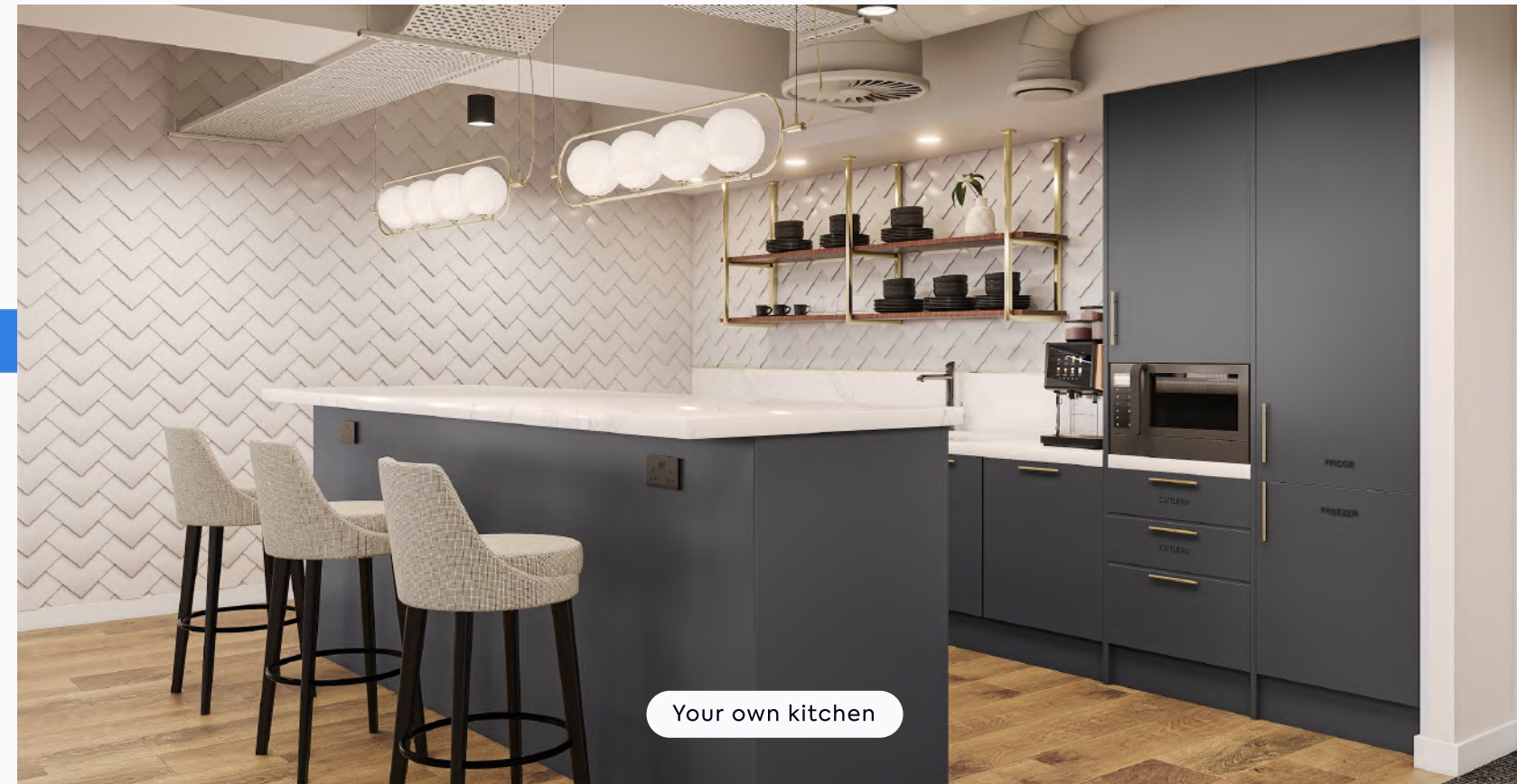
Kent House

[View/download 2D floorplan](#)

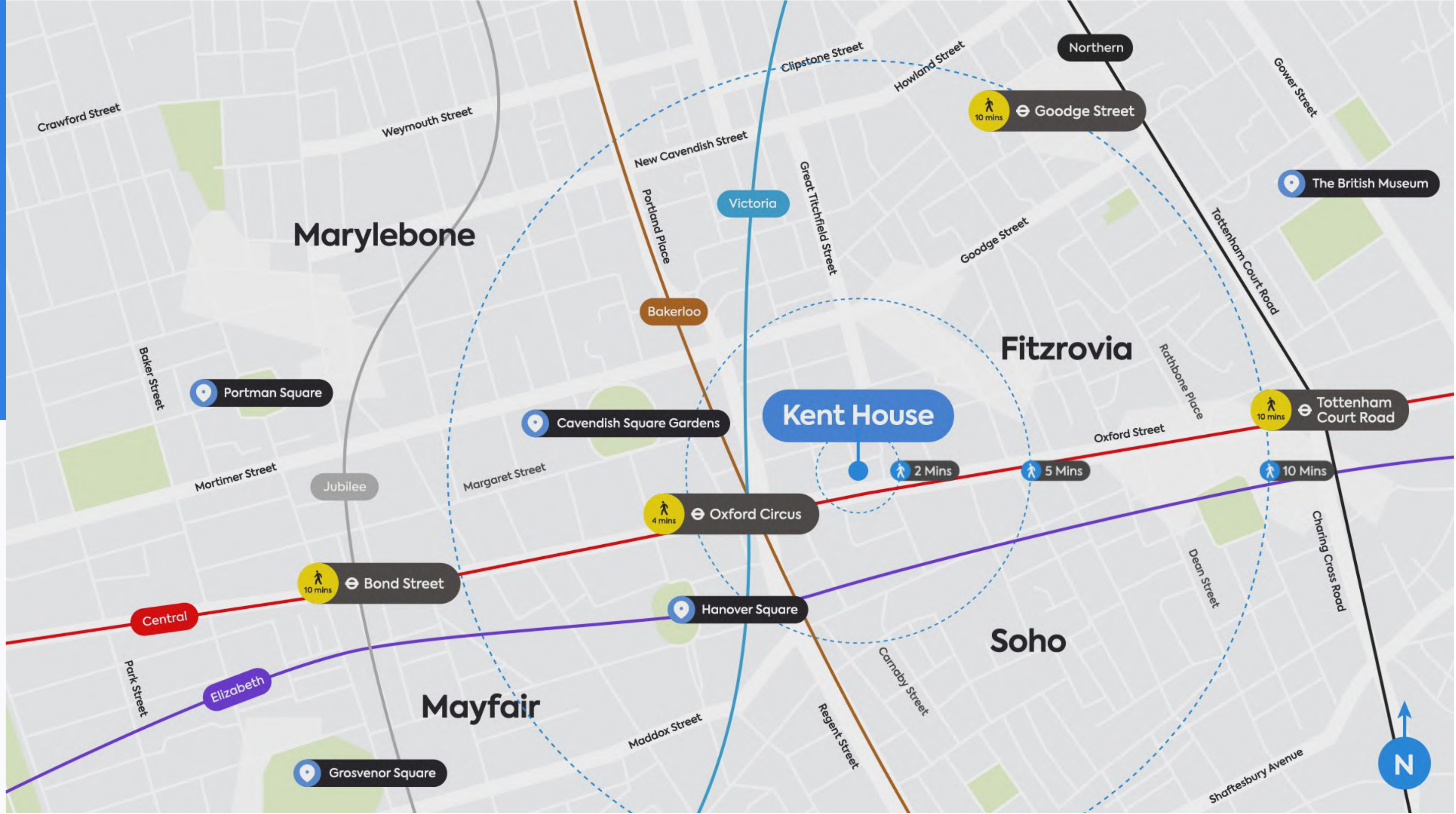


\*This floorplans colour scheme and furnishings are for illustrative purposes only.

# 1st Floor



# Truly Connected



Kent House offers the best of both worlds. While the space offers a little tranquillity away from the noise, three underground lines - including two Elizabeth line stations - are within a 10 minute walk giving you easy access to the best of London and beyond.

 **Walking Distance**

**Oxford Circus**  
4 mins  


**Bond Street**  
10 mins  


**Tottenham Court Road**  
10 mins  


**Goodge Street**  
10 mins  




Pollocks Toy Museum



Cavendish Square



Drunch



Charlotte Street Hotel



The Oxford Market



Oxford Street



Stylish  
Fitzrovia

# Tried and tasted

Within

# 10

minutes

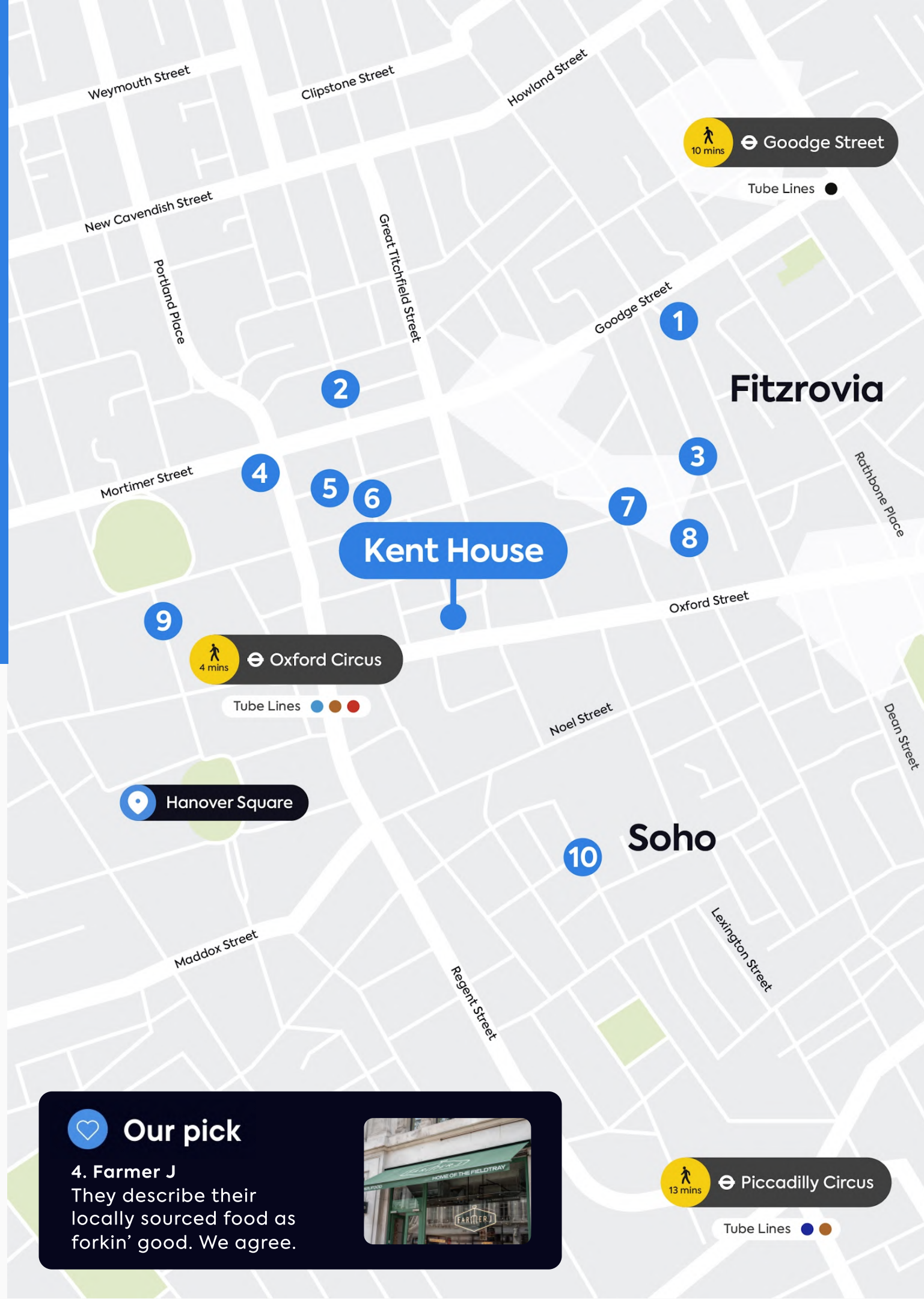


## Highlights

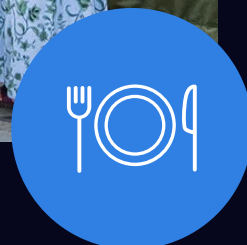
- 1 Mr Fogg's House of Botanicals
- 2 Riding House Café
- 3 The Bricklayers Arms
- 4 Farmer J
- 5 Kiss the Hippo Coffee
- 6 Faros
- 7 Kaffeine
- 8 Circolo Popolare
- 9 Market Halls
- 10 Social Eating House

### Our pick

**4. Farmer J**  
They describe their locally sourced food as forkin' good. We agree.



# Good food



The food scene near Kent House is strong, so you never have to wander far when hunger strikes. For great coffee give Kiss the Hippo a try, for a classic pub lunch dive into The Bricklayers Arms, or enjoy outrageously good Italian food at Circolo Popolare.

# Spoilt for choice

Within

# 10

minutes

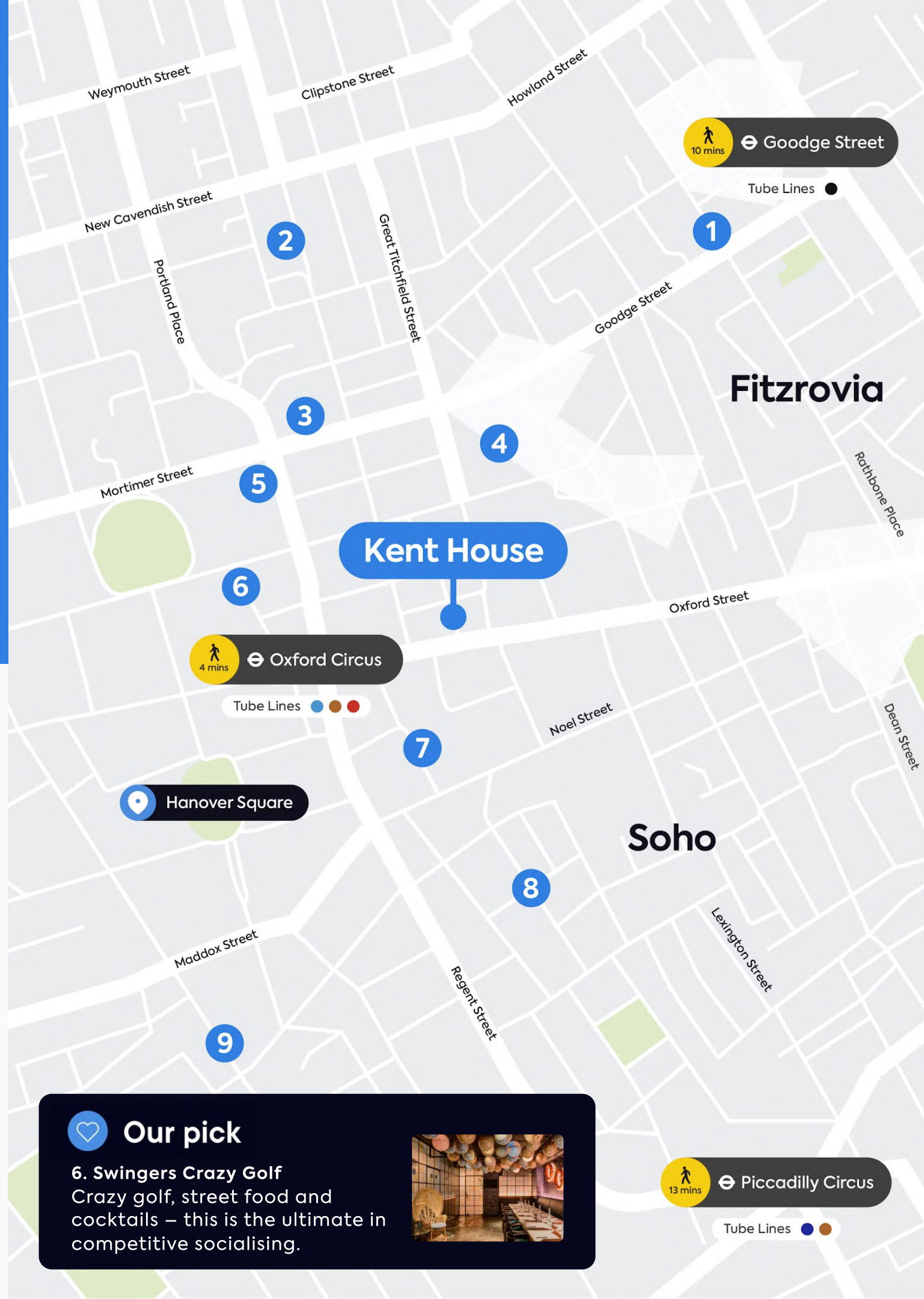


## Highlights

- 1 Pollocks Toy Museum
- 2 Java Whiskers Cat Café
- 3 Psyche
- 4 The Cartoon Museum
- 5 Regent Street Cinema
- 6 Swingers Crazy Golf
- 7 The London Palladium
- 8 Carnaby Street
- 9 Halcyon Gallery

### Our pick

**6. Swingers Crazy Golf**  
Crazy golf, street food and cocktails – this is the ultimate in competitive socialising.



# Things to do



Kent House is surrounded by the iconic and the curious. Art lovers, theatre lovers, toy lovers and fun lovers... whatever your passion there are amazing finds to be discovered.

# On your doorstep

Within

# 10

minutes

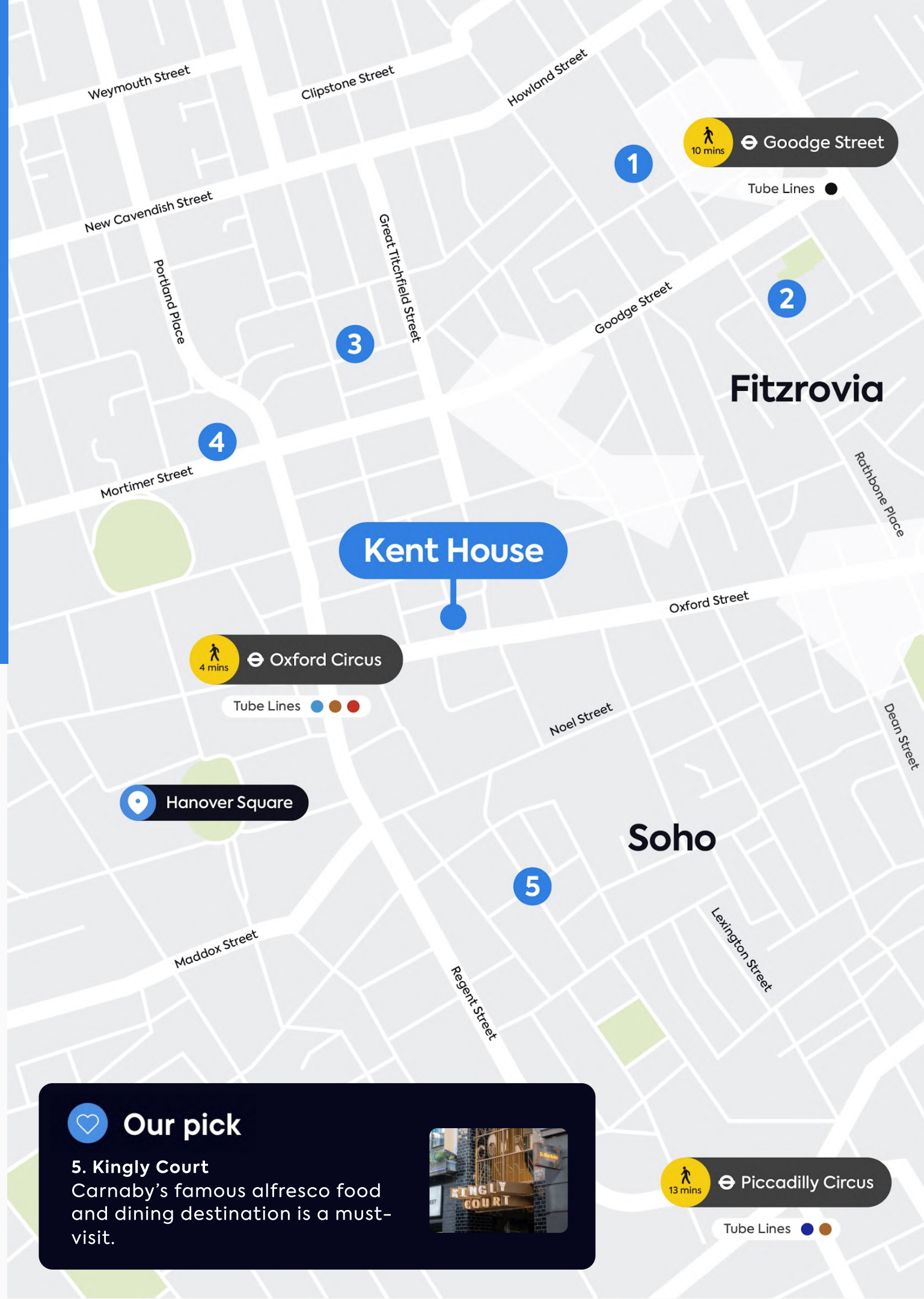


## Highlights

- 1 The Fitzrovia Mural
- 2 Goode Flowers
- 3 Attendant Coffee Roasters
- 4 Chaun Spa at The Langham
- 5 Kingly Court

## Our pick

**5. Kingly Court**  
Carnaby's famous alfresco food and dining destination is a must-visit.



# Hidden Gems



There are plenty of spots that the locals keep for themselves, each of which add to the area's unique charm. And if you decide to make Kent House your new workspace, you'll be one of those in the know.

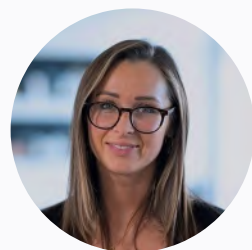
# Get in touch

We hope we've piqued your interest, but it's only just the beginning.  
We'd love to show you more. Get in touch to book your viewing today.

**GPE.**  
Greater together



**David Korman**  
+44 (0) 7435 939 956  
david.korman@gpe.co.uk



**Grace Tomlinson**  
+44 (0) 7871 678 728  
grace.tomlinson@gpe.co.uk

EDWARD CHARLES  
& PARTNERS W 1  
CHARTERED SURVEYORS

**Jamie Shuttle**  
+44 (0) 7788 414 332  
jshuttle@edwardcharles.co.uk

**Sean Cunningham**  
+44 (0) 7827985858  
scunningham@edwardcharles.co.uk

Download as PDF