



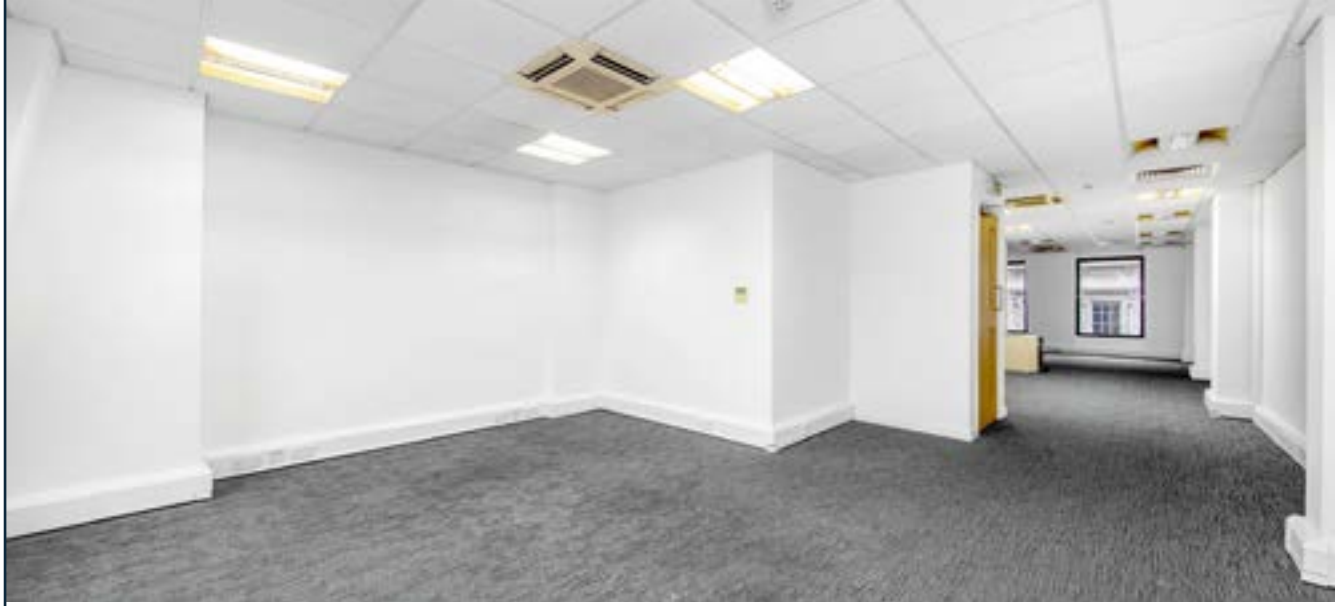
5 CONDUIT STREET

4TH FLOOR



5 CONDUIT STREET

AVAILABLE 4TH FLOOR, 652 SQ FT



OVERVIEW

Located on Conduit Street, this property offers easy access to Mayfair and local transport links such as Oxford Circus station and Bond Street station.

The building is accessed by key fob entry system and features a 4-person passenger lift, shared WCs and access to shower facilities. The demise features air-conditioning, kitchenette, suspended ceiling and large double glazed windows which provide excellent natural light.

RENT

£75.00 PER SQ FT

Rents are quoted exclusive of VAT. Subject to contract.

FEATURES

- Air conditioning
- Kitchenette
- Excellent natural light
- Access to shower facilities
- Passenger lift

OUR TERMS

Lease length:
3 years

Break clause:
6 months' notice

Business rates:
Approx. £25.76 psf

VIEWING

Strictly by appointment through the sole agents.

THE CROWN ESTATE WORKPLACES

020 8163 2443

info@thecrownestateworkplaces.com