



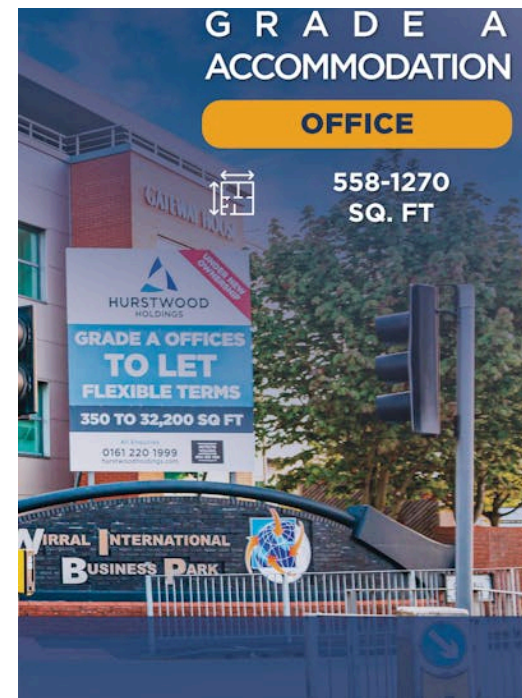
PROMINENT LOCATION

SUMMARY

- Suspended ceilings
- Full access raised floors
- 2 x 12 person disabled access lifts
- 124 car parking spaces
- Design led breakout areas
- Shower amenities
- Designated meeting rooms

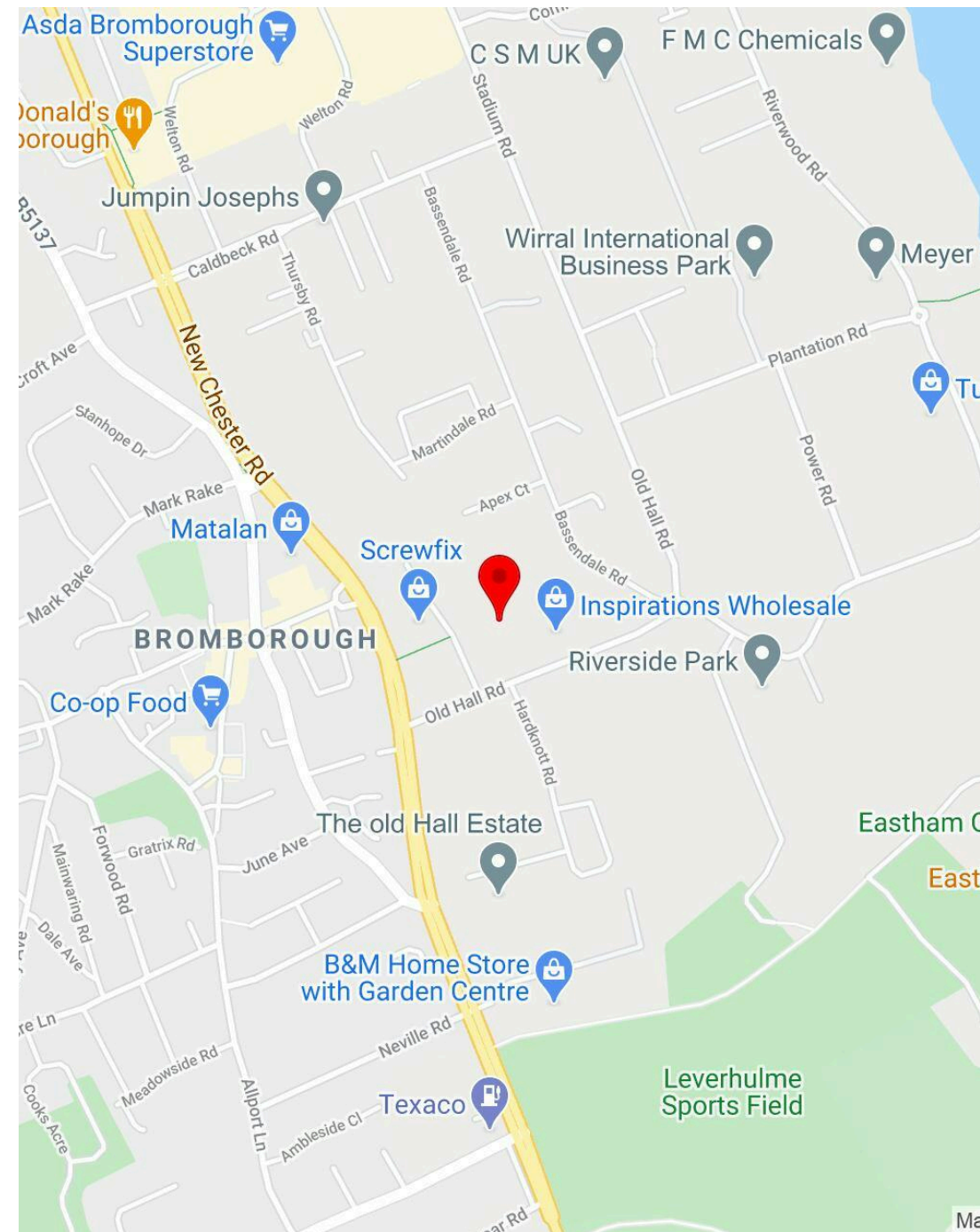
DESCRIPTION

Gateway House is a landmark, fully refurbished Grade A office building offering highly flexible workspace across four floors, with suites available from approximately 558 sq ft to 1,270 sq ft. Designed for modern business needs, the property features suspended ceilings, full-access raised floors, integrated LED lighting, four-pipe fan coil air conditioning, super-fast connectivity, and smart kitchen and breakout zones. Additional amenities include shower facilities, private meeting rooms, and two 12-person lifts. With a substantial 124 on-site car parking spaces, it's an ideal location for professional occupiers seeking quality, convenience, and visibility.



LOCATION

Positioned prominently on the A41 (New Chester Road) at the entrance to Wirral International Business Park, Gateway House offers outstanding regional connectivity. It provides direct road links via the Kingsway and Queensway tunnels to Liverpool city centre (8 miles), with Chester 12 miles to the north. Birkenhead is just 2 miles away. Bromborough Merseyrail Station and extensive bus services are within walking distance, while nearby amenities include Croft Retail & Leisure Park—offering retail favourites, fitness, cafes, and more. The Port of Liverpool and Birkenhead Docks lie just 6 miles away.



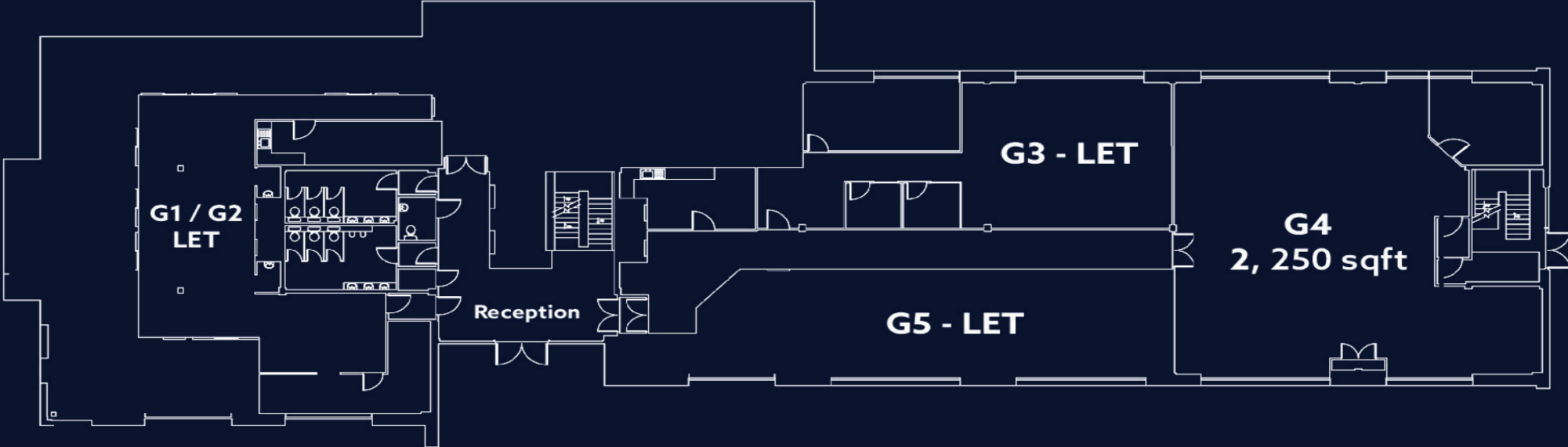
Gateway House



Gateway House



Ground Floor



AVAILABILITY

DESCRIPTION

S4

SIZE

480 sq ft

RENT

£740 /month

SERVICE CHARGE

£80 /month

TO ARRANGE A VIEWING, PLEASE CONTACT



Oliver Brown
0161 220 1999 | 07955 283 889
oliver.brown@hurstwoodholdings.com



Robbie Harrocks
0161 220 1999 | 07842421659
robbie.harrocks@hurstwoodholdings.com

GATEWAY HOUSE



HURSTWOOD HOLDINGS



PROMINENT LOCATION

