

157-197

BUCKINGHAM PALACE ROAD



Meeting rooms available to rent

FULLY-FITTED OFFICE SPACE SITUATED IN A PRIME VICTORIA LOCATION

On site café & restaurant



On-site gym facilities



AVAILABLE NOW:
6,636 SQ FT

EXCELLENT NATURAL LIGHT, PROVIDING FANTASTIC VIEWS ACROSS CENTRAL LONDON

157-197



Business lounge



Main entrance reception

2ND

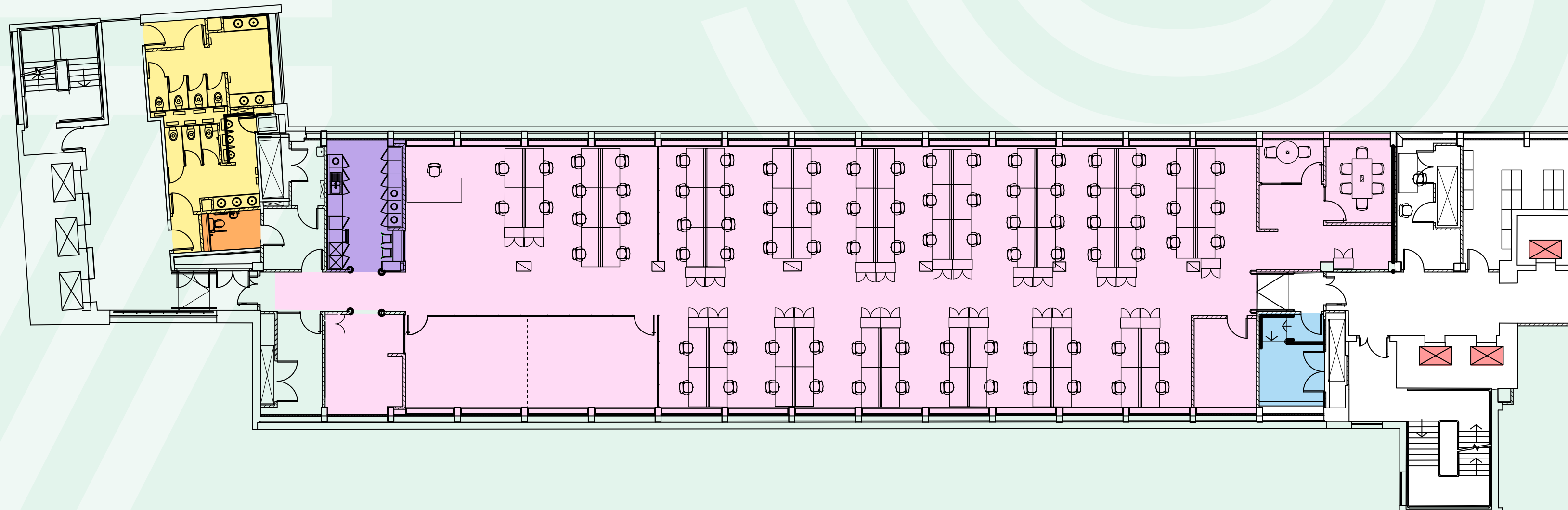
North Wing

Existing Layout Plan

6,636 sq ft

617 sq m

BUCKINGHAM PALACE ROAD



- Workspace
- Kitchenette
- Toilets
- Accessible WC
- Lifts
- Server
- Core

Plans are not to scale. For indicative purposes only.



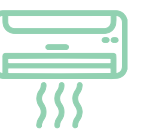
SPECIFICATION:



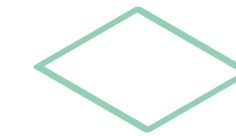
Fully fitted –
“Plug in & Go”



Excellent
natural light



Air
conditioning



Raised
access floor



Passenger lifts



Meeting rooms
available to rent



On-site Café &
Restaurant



On-site gym
facilities



Drop-in business
lounge



Cycle storage and
shower facilities



Manned reception
/ commissionaire



Auditorium
available to rent

LOCAL AREA

Belgravia

157-197



Chelsea



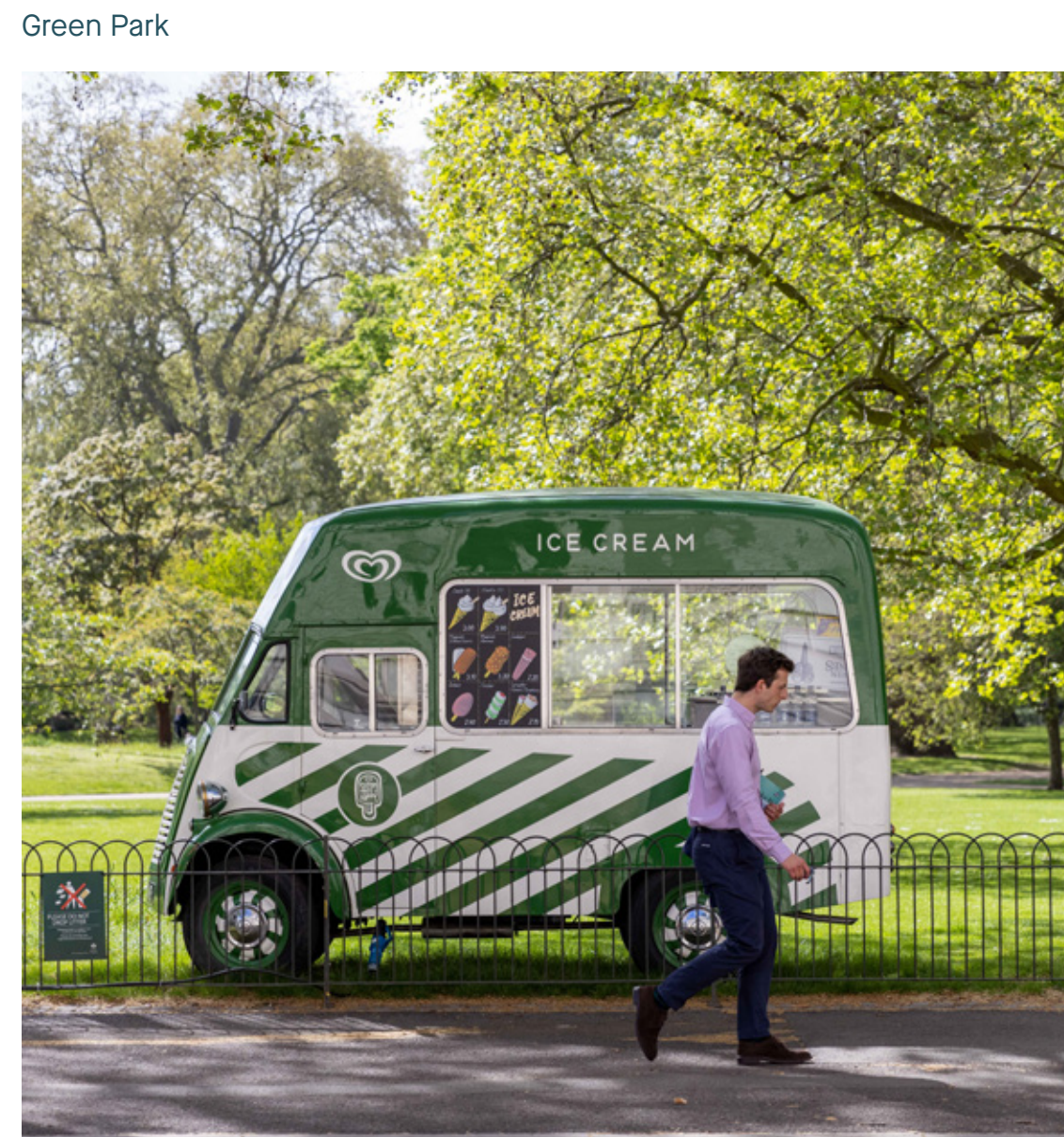
Les Senteurs Perfumery

157-197 Buckingham Palace Road is prominently situated on the corner of Buckingham Palace Road at its junction with Elizabeth Bridge Road adjacent to Victoria Mainline Station (Circle, District and Victoria lines), allowing easy access to Westminster, Green Park, Oxford Circus, South London and the City.

The location provides immediate access to a wealth of amenities from restaurants and bars, to retail shops and cafes.



Eccleston Yards



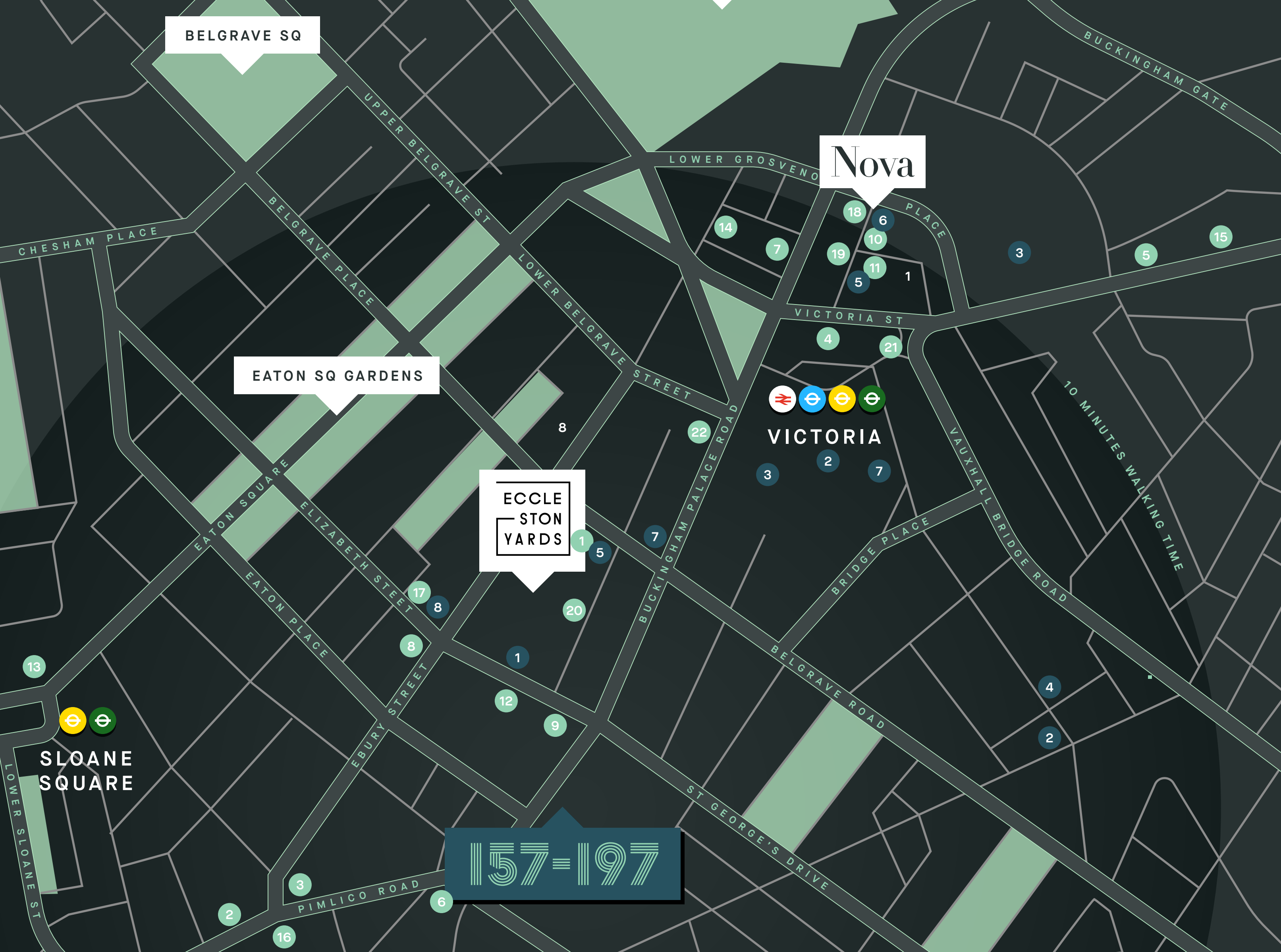
Green Park



Peggy Porschen



St James's Park



LOCAL AMENITIES

157-197



Drinking & Dining

1. Boisdale of Belgravia
2. Daylesford Organic
3. La Poule Au Pot
4. Market Hall Victoria
5. M Victoria
6. No 11 Pimlico Road
7. Pizza Pilgrims
8. Peggy Porschen
9. Pret A Manger
10. Rail House
11. Stick'n'sushi
12. The Athenian
13. The Botanist
14. The Goring Cocktail Bar
15. The Ivy Victoria
16. The Orange Public House + Hotel
17. The Thomas Cubitt Belgravia
18. Timmy Green
19. Vagabond
20. Wild by Tart
21. Flat Iron
22. Harry's Restaurant



Coffee

1. Black Sheep Coffee
2. Café Nero
3. Costa
4. Hatch 77
5. Ole & Steen
6. Notes
7. Starbucks
8. Tom Tom Coffee House

FURTHER INFORMATION

TERMS

A new sublease(s) is available for a term by arrangement.

Financial terms on application.

VAT

The property is not elected for VAT.

EPC

EPC – C rating

Building net zero carbon target by 2029

Rainwater Harvesting

Uses renewable electricity

Subject to contact.

VISIT

www.157-197bpr.co.uk



Auditorium and meeting rooms available to hire

VIEWING STRICTLY BY APPOINTMENT:



Guy Bowring

gbowring@tuckerman.co.uk

+44 (0) 7831 185 728

Scott Fisher

sfisher@tuckerman.co.uk

+44 (0) 7890 572 225

Christopher Black

christopher.black@alignsurveyors.co.uk

01609 797 330

Jade Henson-Amphlett

jhensona@tuckerman.co.uk

+44 (0) 7921 452 727

IMPORTANT INFORMATION: These particulars are for general information purposes only and do not represent an offer of contract or part of one. Tuckerman & Align Chartered Surveyors has made every attempt to ensure that the particulars and other information provided are as accurate as possible and are not intended to amount to advice on which you should rely as being factually accurate. You should not assume that the property has all necessary planning, building regulations or other consents and Tuckerman & Align Chartered Surveyors have not tested any services, facilities or equipment. Any measurements and distances given are approximate only. Purchasers must satisfy themselves of all of the aforementioned by independent inspection or otherwise. Although we make reasonable efforts to update our information, neither Tuckerman & Align Chartered Surveyors nor anyone in its employment or acting on its behalf makes any representations warranties or guarantees, whether express or implied, in relation to the property, or that the content in these particulars is accurate, complete or up to date. Our images only represent part of the property as it appeared at the time they were taken. If you require further information please contact us. Design by Studio185.london | 229