

# CROSSLAND OTTER HUNT

3-4 John Princes Street,  
W1G 0JL

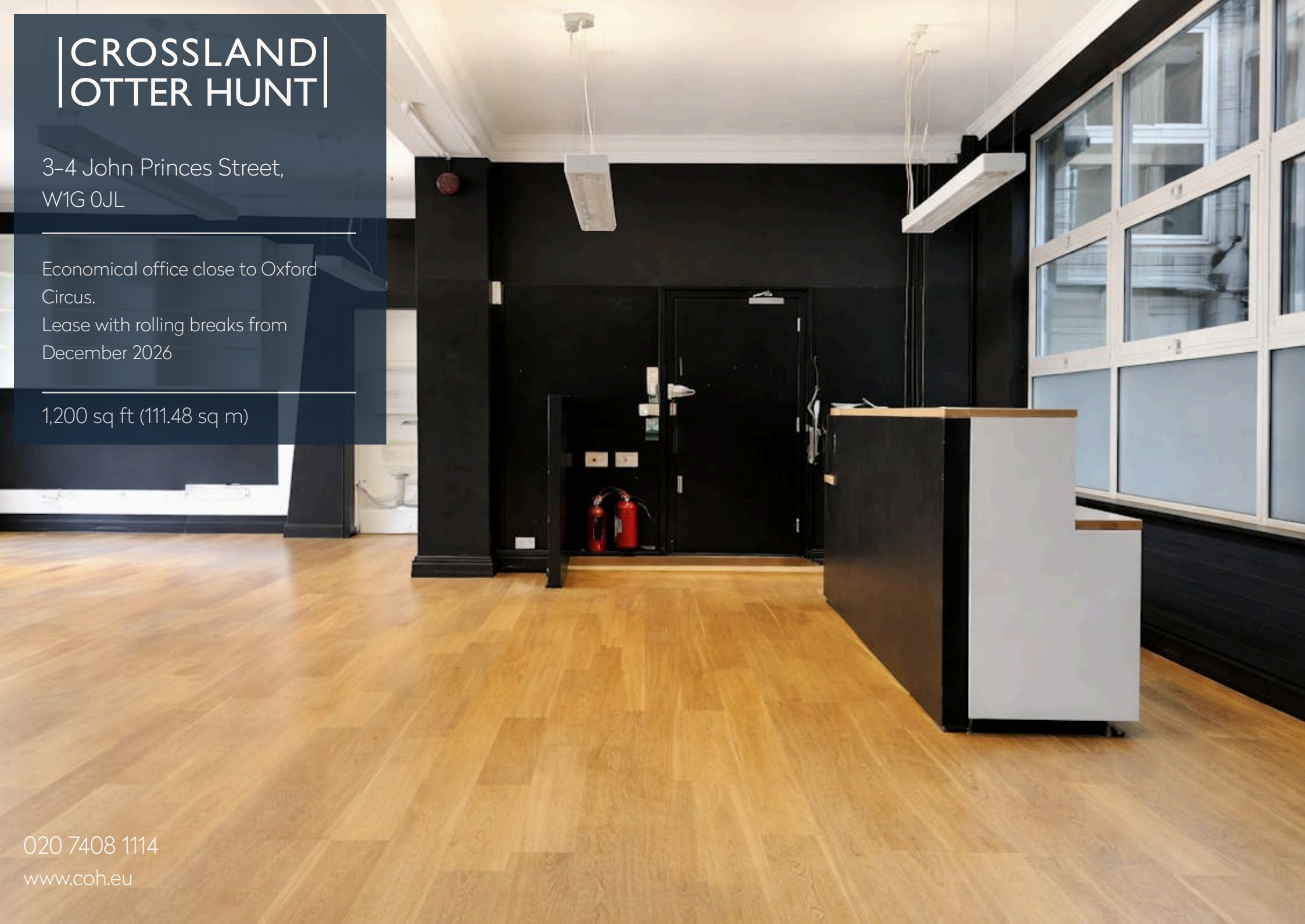
Economical office close to Oxford  
Circus.

Lease with rolling breaks from  
December 2026

1,200 sq ft (111.48 sq m)

020 7408 1114

[www.coh.eu](http://www.coh.eu)



# CROSSLAND OTTER HUNT

3-4 John Princes Street,  
W1G 0JL

Economical office close to Oxford  
Circus.

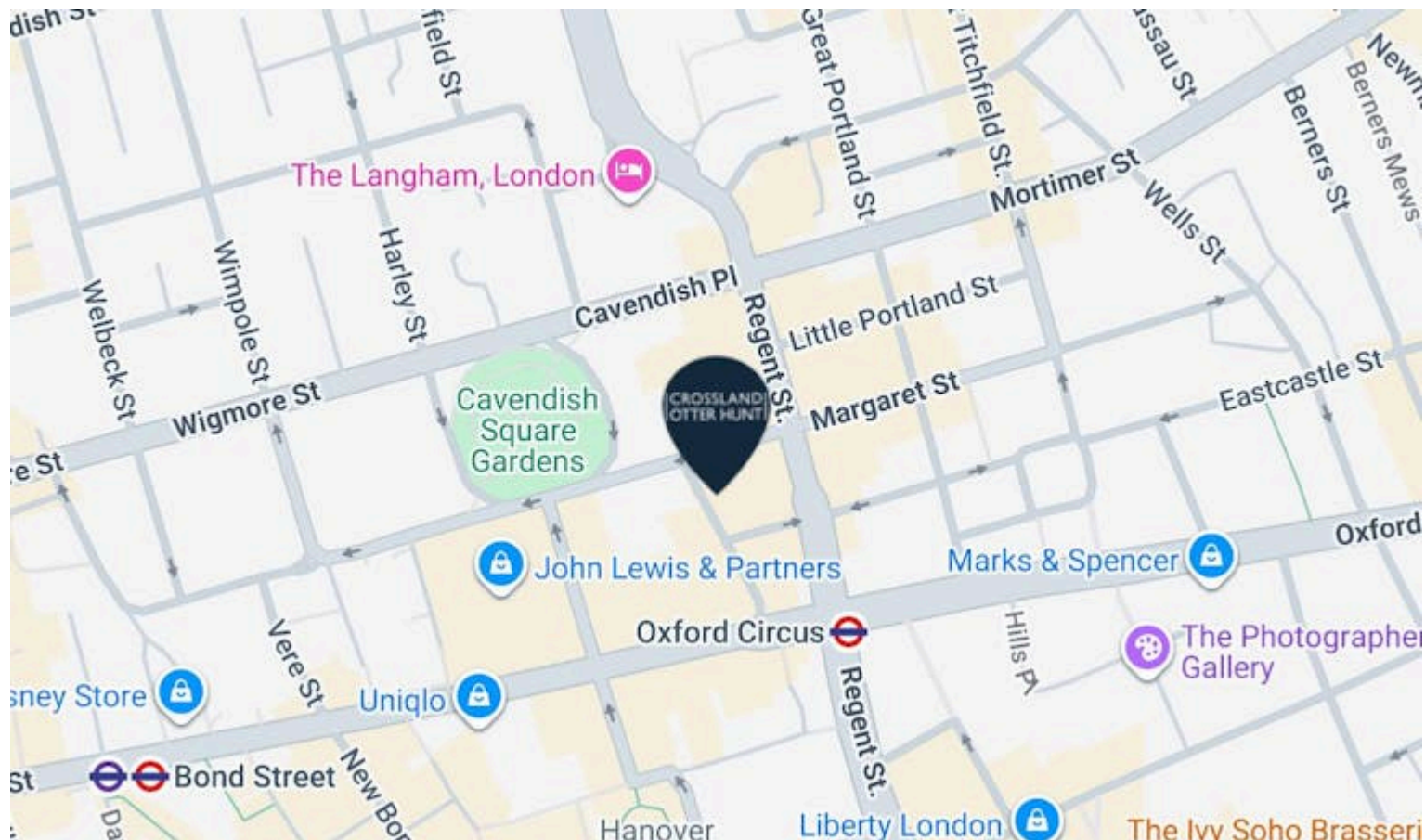
Lease with rolling breaks from  
December 2026

1,200 sq ft (111.48 sq m)

[View Online →](#)

020 7408 1114

[www.coh.eu](http://www.coh.eu)



## Nearest Stations



Oxford Circus  
(0.1 Miles)



Bond Street  
(0.3 Miles)



Goodge Street  
(0.5 Miles)

John Princes Street links Oxford Street with Margaret Street, just north west of Oxford Circus. Transport access is excellent with Bond Street station close by and bus routes to all parts of London on the doorstep. The restaurants and shops of both Mayfair and Soho are close at hand.

# CROSSLAND OTTER HUNT

3-4 John Princes Street,  
W1G 0JL

---

Economical office close to Oxford  
Circus.

Lease with rolling breaks from  
December 2026

---

1,200 sq ft (111.48 sq m)

---

[View Online →](#)

---

020 7408 1114

[www.coh.eu](http://www.coh.eu)



- Wood floors to office
- Great natural light
- Lift
- Meeting room
- High ceilings
- Kitchenette
- Open plan office
- Close to Oxford Circus station

## Accommodation

The accommodation comprises the following areas:

NAME	SQ FT	RENT (SQ FT)	RATES PAYABLE (SQ FT)	SERVICE CHARGE (SQ FT)	TOTAL YEAR	AVAILABILITY
1st	1,200	£33.33	£27.83	£18.35	£95,412	Available
Total	1,200	£33.33	£27.83	£18.35	£95,412	

# CROSSLAND OTTER HUNT

## CONTACT US



Mike MacKeith  
07831361722  
mike@coh.eu



Emma Byrne  
07715516788  
emmab@coh.eu



Phil Frenay  
02073992742 | 07818566174  
phil@coh.eu

020 7408 1114

[www.coh.eu](http://www.coh.eu)

## Description

A Self-Contained office of 1,200 sq ft over the whole first floor, arranged as an open plan area and a meeting room to the rear.

## Location

John Princes Street links Oxford Street with Margaret Street, just north west of Oxford Circus. Transport access is excellent with Bond Street station close by and bus routes to all parts of London on the doorstep. The restaurants and shops of both Mayfair and Soho are close at hand.

## EPC

C

## ANTI MONEY LAUNDERING

The successful applicant will be required to provide two forms of ID and proof/source of funds, to satisfy anti-money laundering protocols.

# CROSSLAND OTTER HUNT

[www.coh.eu](http://www.coh.eu)



Visit Our Office  
3-5 Barrett Street  
London  
W1U 1AY