



THE GRAND

60-62 BROAD STREET | BANBURY | OX16 5BL

FOR SALE OR TO LET

A former theatre sensitively redeveloped to provide **12 new apartments** and **4,500 sq ft of commercial space.**

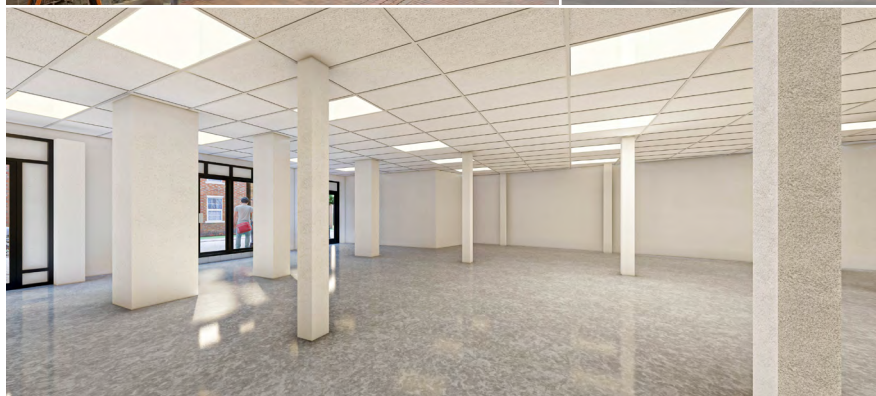
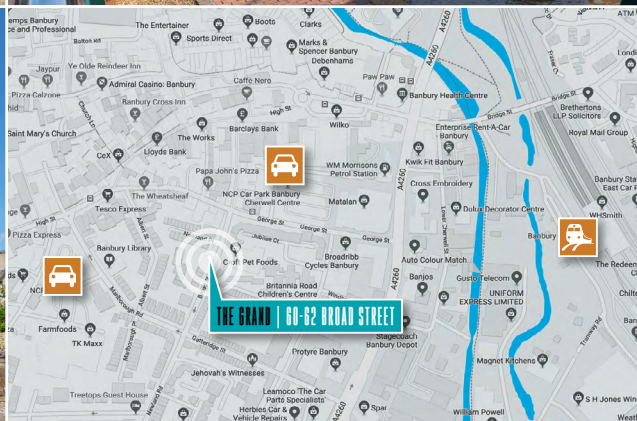
FOR SALE OR TO LET

LOCATION

The historic Oxfordshire market town of Banbury is well located in the north of the county, giving easy road and rail connection to London, Oxford and the major Midlands population centres of Birmingham and Coventry. It is a lively town with a thriving commercial core.

The bustling High Street, the lanes of the Old Town and Castle Quay shopping mall have a wide variety of shopping, restaurants and cafés, while the charming older streets and historic areas sit happily alongside the newer developments.

Banbury's enviable location, on the edge of the Cotswolds and within the lovely Cherwell Valley, also allows easy access to Bicester Retail Village and the other attractions of Oxfordshire.



To arrange an inspection, please contact the Landlord's sole agents, **May & Company:**

SAMUEL MAY

E samuel@mayandcompany.co.uk

T 020 3503 0635

M 07742 256873

MISREPRESENTATIONS ACT 1967 & PROPERTY MISDESCRIPTIONS ACT 1991

These sales particulars are intended only to give a fair description of the property and do not form the basis of any contract or any part thereof. The descriptions, dimensions and all other information are believed to be correct but their accuracy is in no way guaranteed. The purchaser or lessee will be responsible for satisfying themselves on all matters relevant to any developments they may propose to carry out and neither the Vendors nor their agents accept liability in respect thereof. These particulars do not constitute any part of any offer or contract. The Vendors do not make or give, nor does any other person in their employment have any authority to make or give, any representations or warranty whatsoever in relation to this property. These details are believed to be correct at the time of compilation but may be subject to subsequent amendment. Regulated by RICS.

MAY & COMPANY
RETAIL & LEISURE SPECIALISTS