

60 Worship Street, London, EC2A 2EZ

The available office floors provide warehouse style,
bright, fitted creative space full of character



Third Floor



SUMMARY

The entire floor provides great fitted warehouse office space to let, benefitting from amazing natural light with single glazed triple aspect windows. The space will have access to brilliant communal facilities.

CONTRACT

Flexible lease terms available including all of your occupancy costs such as rent, business rates, service charge, utilities, cleaning, security, building insurance, maintenance and A/C etc.

FLOOR

Third Floor

SIZE

3,030 SQ FT

INCLUDES

- Space for 50 desks
- 10 person board room
- 3 x 3-4 person meeting rooms
- Breakout space
- Kitchen
- Great natural light with single glazed triple aspect windows
- Floor to ceiling height over 3 metres

Furniture available by separate arrangement



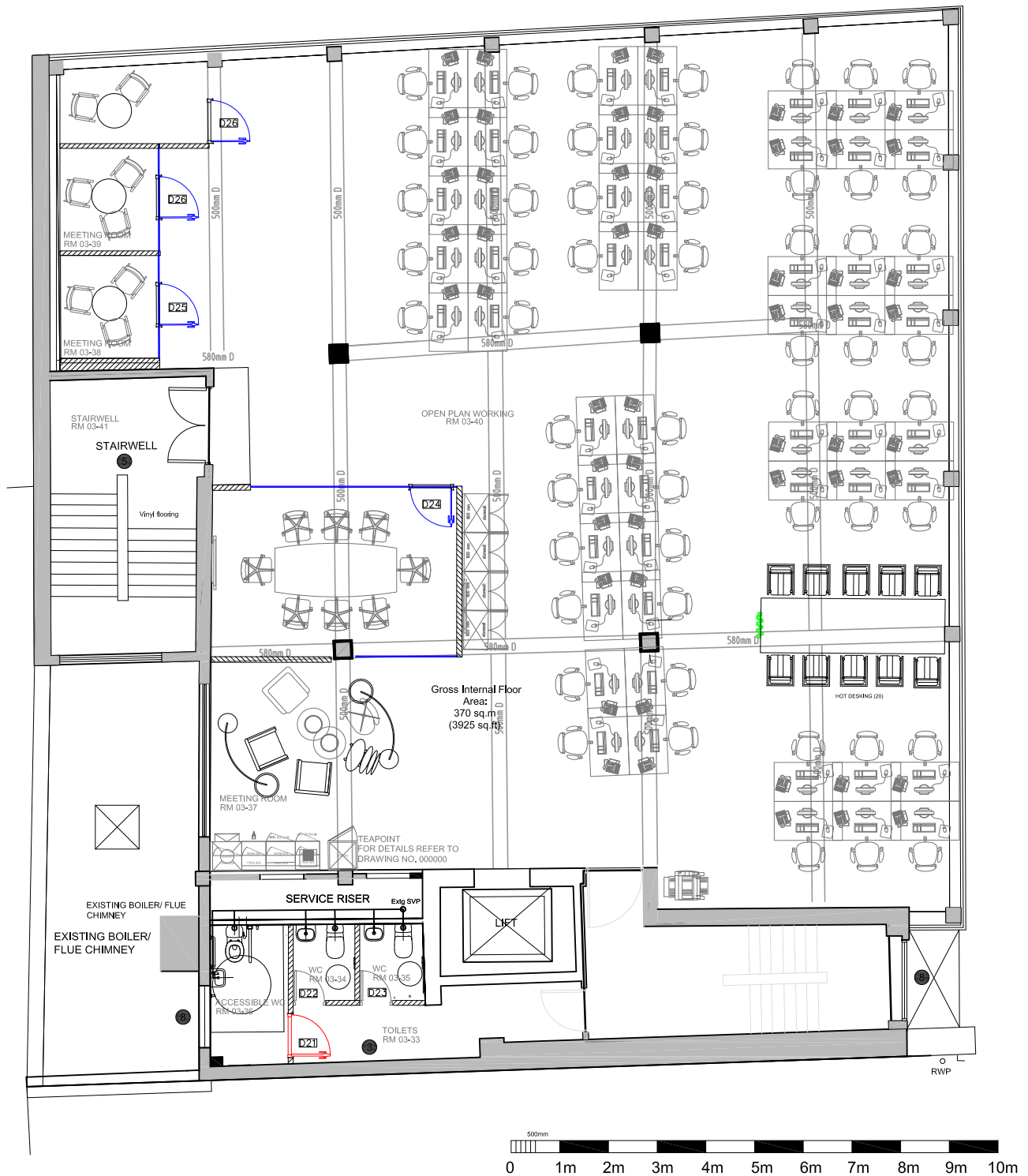
Description

This converted warehouse provides a stylish, design focused bright space, full of character with an abundance of natural light. Tenants will benefit from great onsite facilities, including showers, cycle racks, changing rooms and access to event space.

The space comprises of the entire 3rd floor (top floor in the building) and is fitted out to provide dynamic and creative office space with the ability to brand your workspace.

Third Floor Floorplan

WORSHIP STREET



Lower Ground Floor



SUMMARY

The entire lower ground floor great fitted creative office space to let, benefitting from good natural light and exposed services. The additional storage space has been turned into unique meeting spaces, with the floor also having its own demised WC's.

CONTRACT

Flexible lease terms available including all of your occupancy costs such as rent, business rates, service charge, utilities, cleaning, security, building insurance, maintenance and A/C etc.

FLOOR

Lower Ground floor

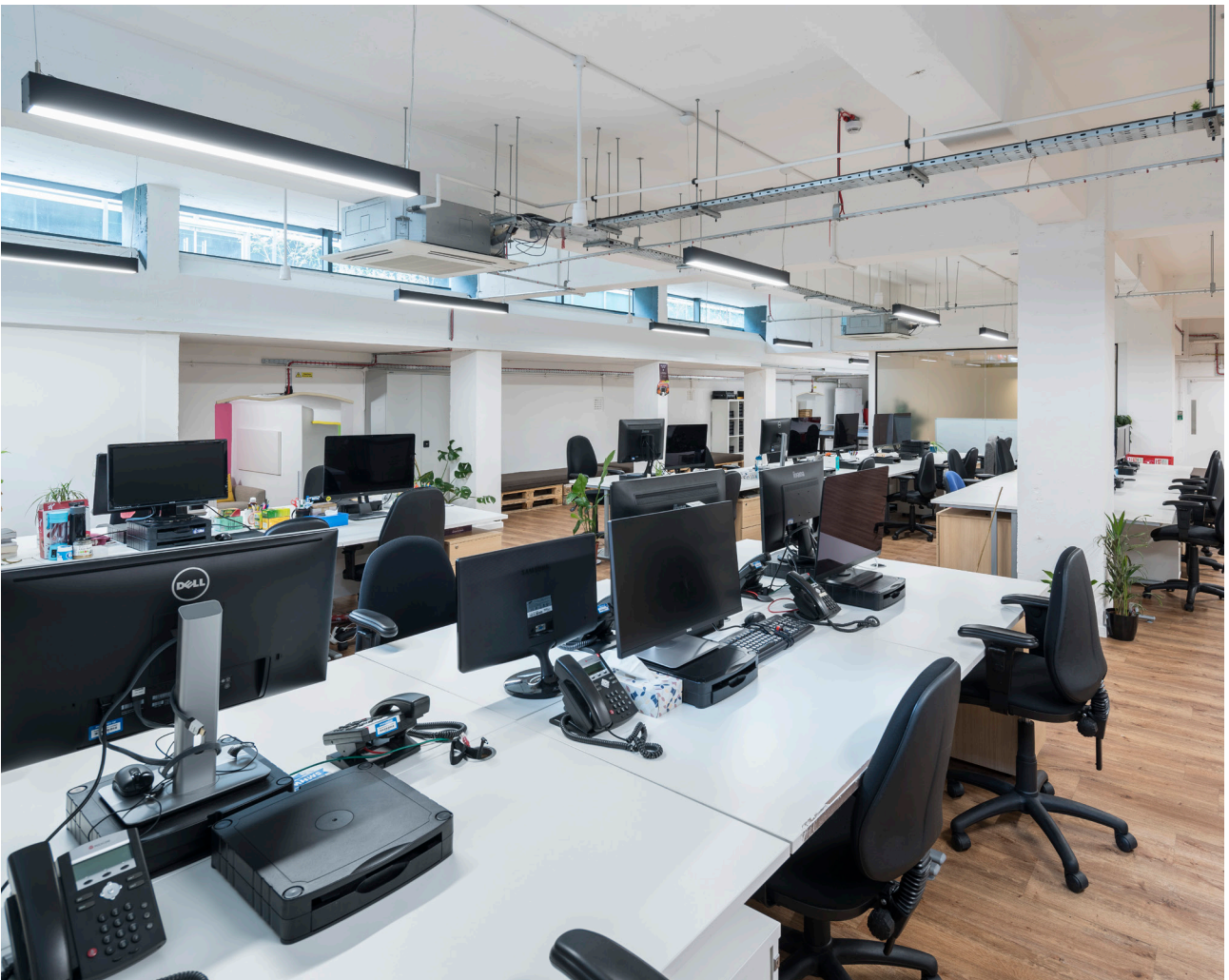
SIZE

3,585 sq ft (plus 603 sq ft storage)

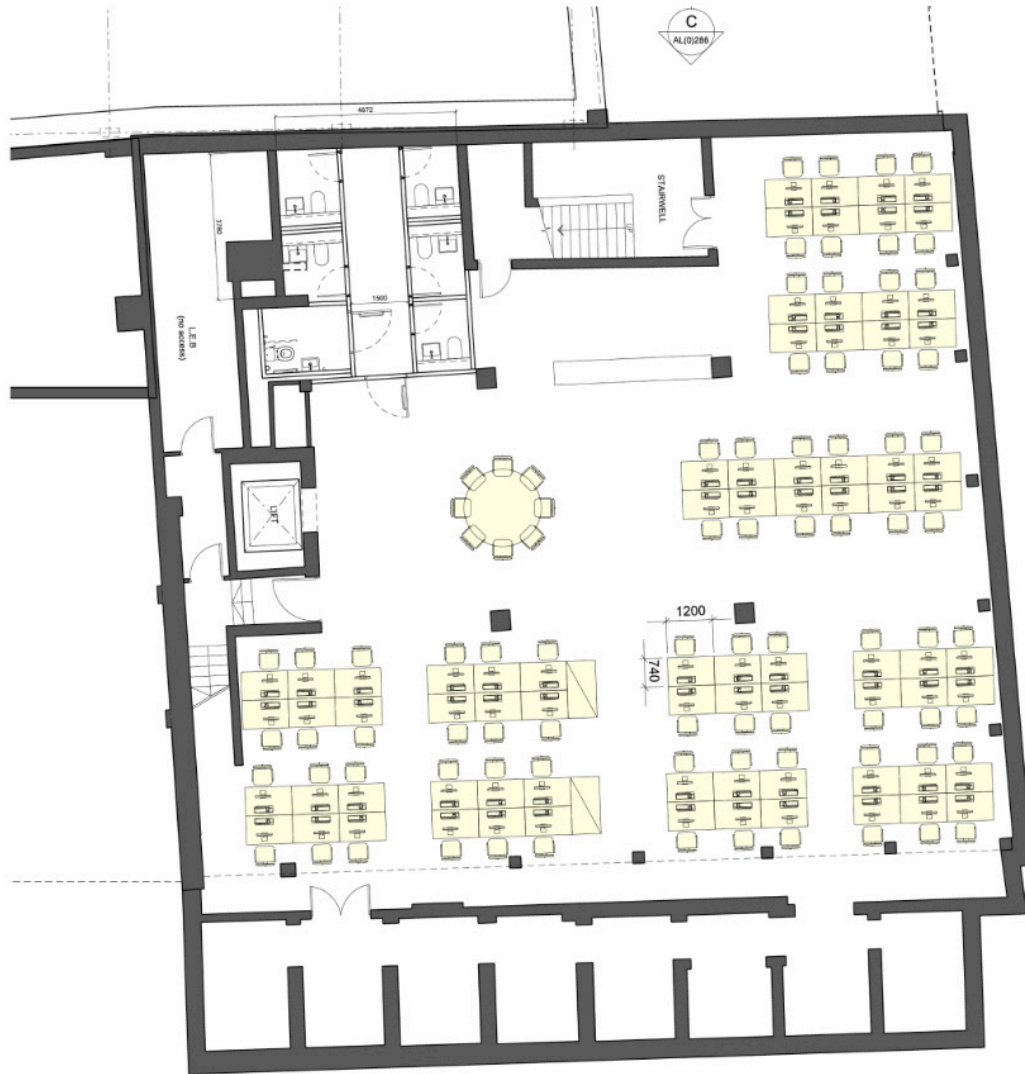
INCLUDES

- Space for 70 desks
- 10 person board room
- 5 x 3-4 person unique meeting spaces
- Breakout space
- Kitchen
- Natural light
- Floor to ceiling height over 3 metres





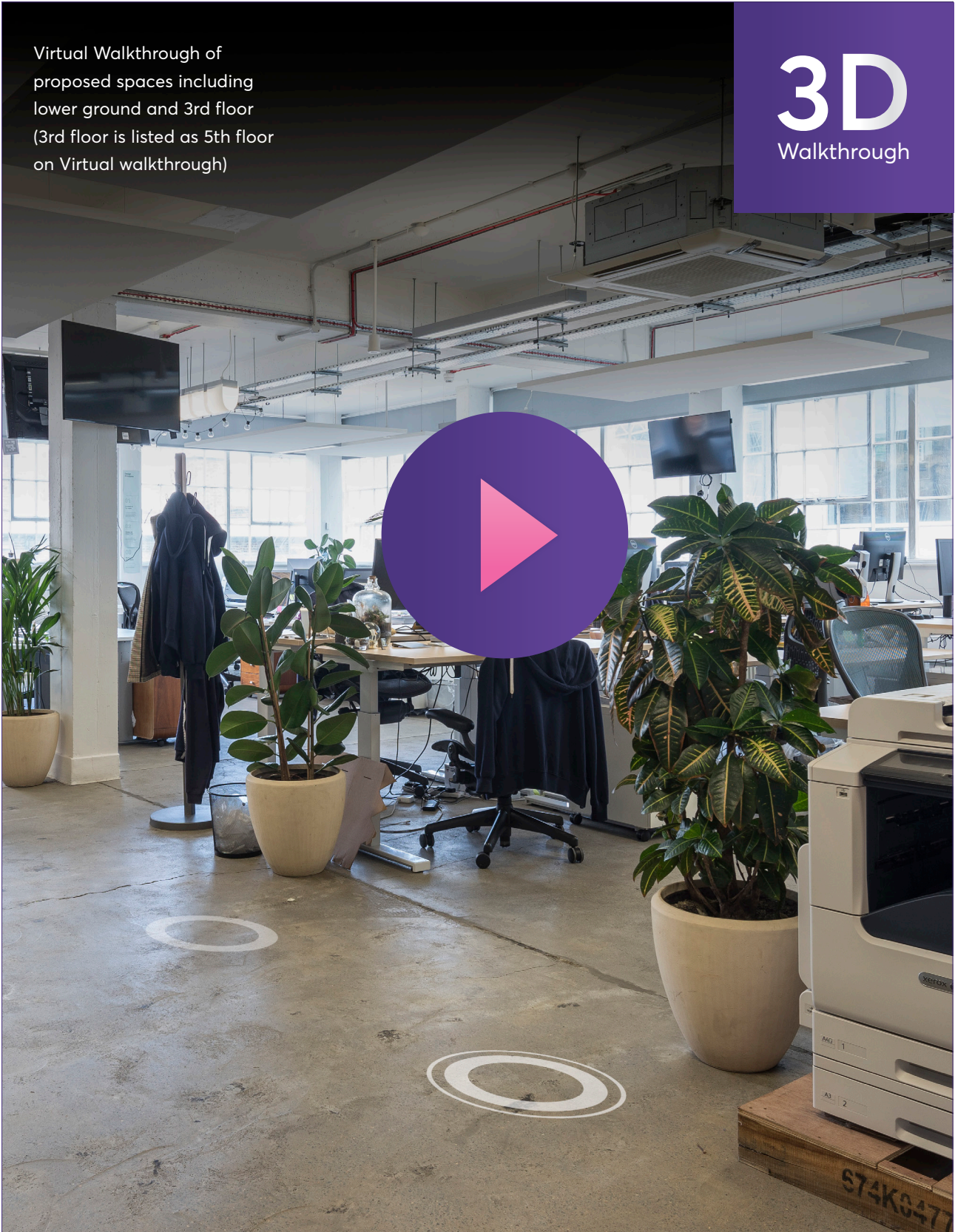
Lower Ground Floorplan



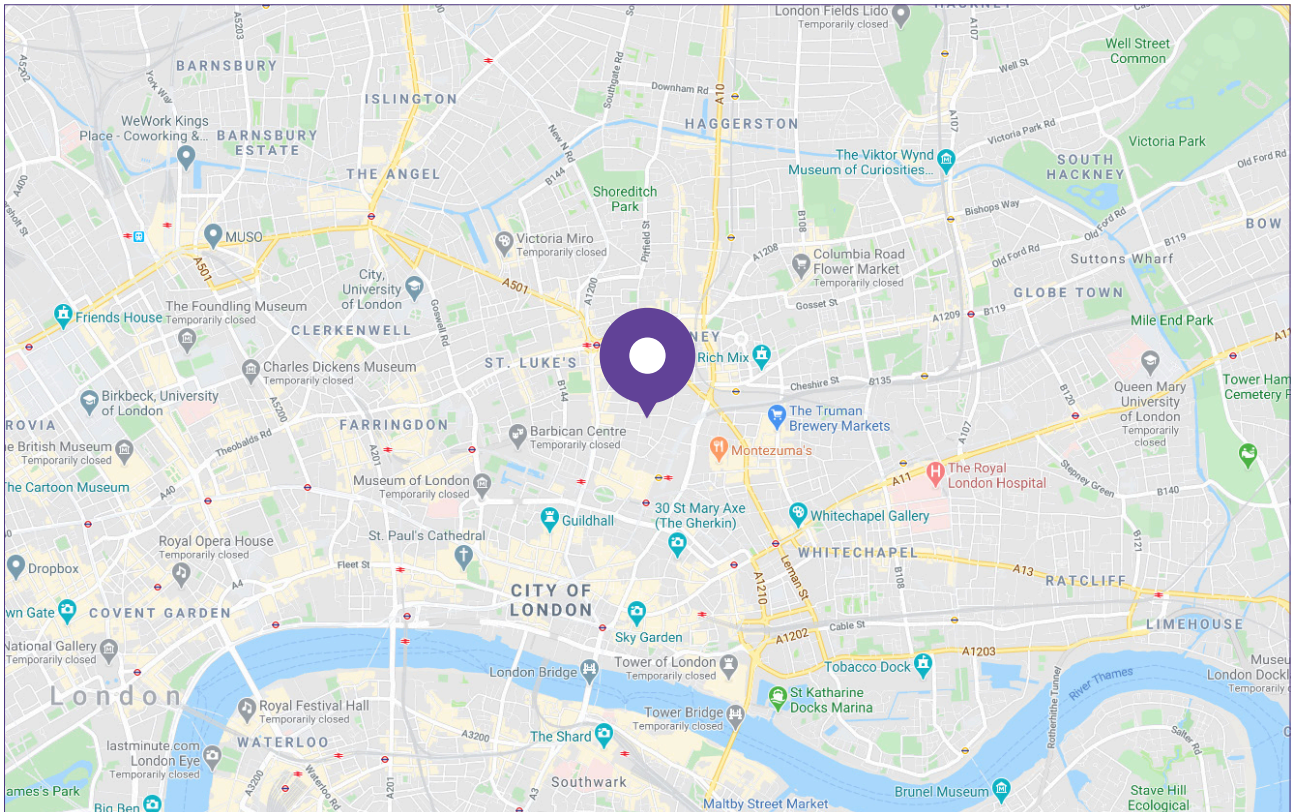
Explore the Office

Virtual Walkthrough of proposed spaces including lower ground and 3rd floor (3rd floor is listed as 5th floor on Virtual walkthrough)

3D
Walkthrough







Map



Location

60 Worship Street occupies a prominent position on the corner of Vandy Street and Worship Street. It benefits from being a vibrant part of City fringe close to all the local eateries, bars, restaurants, amenities and transport links.

Transport Links

-  **Liverpool Street**
(Central, Metropolitan, Circle, Hammersmith & City, Mainline Trains)
-  **Moorgate**
(Northern, Hammersmith & City, Metropolitan, Circle and Mainline Trains)
-  **Old Street**
(Northern and Mainline Trains),
-  **Shoreditch High Street**
(Mainline Trains)

Lease

The space is available by way of a flexible fully inclusive lease for a term to be agreed.

Contact Information

Daniel Howard

Director/ Head of Global Corporate Solutions

T: 020 3872 7128

M: 07725 341984

danielh@officefreedom.com

David Garson

Global Head of Enterprise - EMEA

T: 020 3872 7147

M: 07961 606732

david@officefreedom.com

This document has been prepared by Office Freedom for advertising and general information only. Office Freedom makes no guarantees, representations or warranties of any kind, expressed or implied, regarding the information including, but not limited to, warranties of content, accuracy and reliability. Any interested party should undertake their own inquiries as to the accuracy of the information. Office Freedom excludes unequivocally all inferred or implied terms, conditions and warranties arising out of this document and excludes all liability for loss and damages arising there from. This publication is copyrighted property of Office Freedom. © 2020. All rights reserved.