

7 Hertford Street, London, W1J 7RH

Stylish and Contemporary Mayfair Townhouse

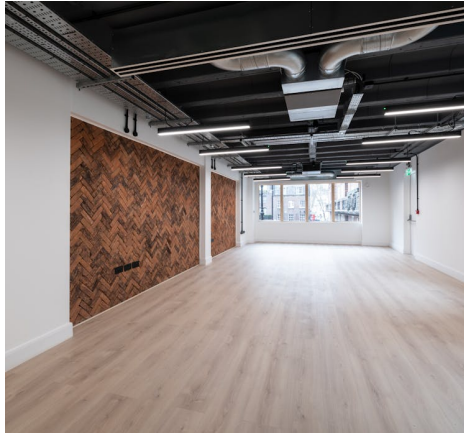
Suites available from 547 - 2,616 sq ft

- Newly refurbished
- LED lighting
- Generous ceiling heights
- Shower and bike racks
- Impressive reception
- Excellent natural light
- 8 person passenger lift

7 Hertford Street

London, W1J 7RH

CROSSLAND
OTTER HUNT



Summary

Available Size	547 to 2,616 sq ft / 50.82 to 243.03 sq m
Rent	£85 - £105 per sq ft
Service Charge	£18.60 per sq ft
EPC	Upon Enquiry

Description

7 Hertford Street is located on the south-east corner of Hertford street. It is in close proximity to Shepherd Market which offers a variety of boutique shops, galleries and cafes. Many renowned hotels, restaurants and private members clubs are also nearby. The building is well connected with Green Park being the closest underground Station and Hyde Park corner also a short walk away.

Location

The building offers high-quality office accommodation in an excellent location in Mayfair. The building has been comprehensively refurbished and includes a terrace on the ground floor.

Accommodation

The accommodation comprises the following areas:

Name	sq ft	sq m	Rent (sq ft)	Rates Payable (sq ft)	Service Charge (sq ft)	Total /sq ft	Availability
3rd	1,047	97.27	£105	£39	£18.60	£162.60	Available
2nd	1,022	94.95	£99.50	£39	£18.60	£157.10	Available
Ground	547	50.82	£85	£39	£18.60	£142.60	Under Offer

Viewings

Via the joint sole agents Crossland Otter Hunt or JLL.

Terms

Available by way of a new lease direct from the landlord.



Phil Frenay

02073992742 | 07818566174

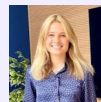
phil@coh.eu



Richard Lockhart

020 7399 2735 | 07780661096

richard@coh.eu



Charlotte Steele

020 7408 1114 | 07503625481

charlotte@coh.eu

Michael Oliver (JLL)

Poppy Taylor (JLL)

Georgina Ford (JLL)