

High Quality
Fitted Out Offices

NEWTON
PERKINS



The Hallmark Building

52-56 Leadenhall Street,
London, EC3A2EB

7,688 TO 24,825 SQ FT

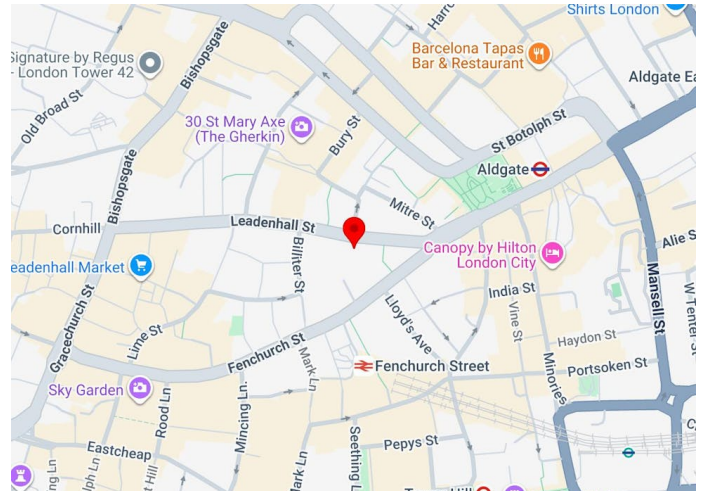
TO LET

- Fully fitted accommodation
- Impressive Entrance Halls
- Commissionaire Services
- 5 x refurbished Passenger Lifts
- 24 Hour access and security
- Cycle centre and shower/locker room facilities
- On-Site gym facilities (Fitness First)

+44 (0) 20 7456 0700
newtonperkins.com

High Quality Fitted Out Offices

NEWTON PERKINS



Summary

Available Size	7,688 to 24,825 sq ft / 714.24 to 2,306.32 sq m
Rent	£50 - £55 per sq ft / Part 3rd - £55.00 / Self Contained Ground & 1st - £50.00
Rates Payable	£21.12 per sq ft
Service Charge	£18.50 per sq ft
EPC	Upon enquiry

Description

With a fantastic range of available facilities, The Hallmark Building offers high quality amenities ranging from brand new shower and changing rooms, on-site bike storage and a fully equipped gym.

Terms

New leases are available direct from the Landlord for a term by arrangement up to 11/10/2029.

Accommodation

The accommodation comprises the following areas:

Name	sq ft	Availability
3rd - Part	7,688	Available
Ground - Self Contained & 1st	17,137	Available

Location

Leadenhall Street is an enviable and historic location at the heart of the insurance and financial district.

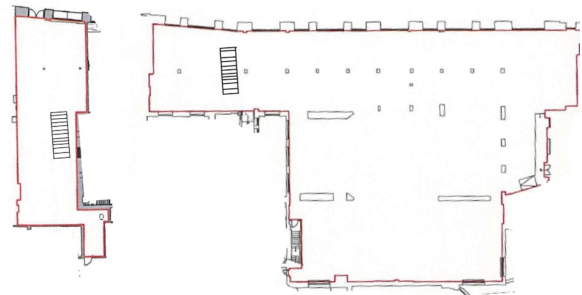
For food, drink and leisure there's plenty to explore on the doorstep, but a short stroll in any direction will lead to even further discoveries, from the fine dining venues of Bank and Spitalfields to the creative and independent venues in Aldgate or premium waterside setting of St. Katharine Docks.



Jonathan Beilin
0207 456 0727 | 07976392016
jb@newtonperkins.com



Chris Sutcliffe
07970 831 250
crs@newtonperkins.com



Self Contained
Ground

Self Contained
1st Floor

+44 (0) 20 7456 0700
newtonperkins.com

