

# Ryden

# RETAIL PHARMACY INVESTMENT OPPORTUNITY



12 BARNTON  
STREET  
STIRLING  
FK8 1NB

LET TO EXPRESS  
HEALTHCARE LTD  
FRI LEASE UNTIL 2040  
OVER 14 YEARS OF  
UNEXPIRED INCOME  
OFFERS OVER  
£180,000 (EXCLUSIVE  
OF VAT)  
NIY 8.45%

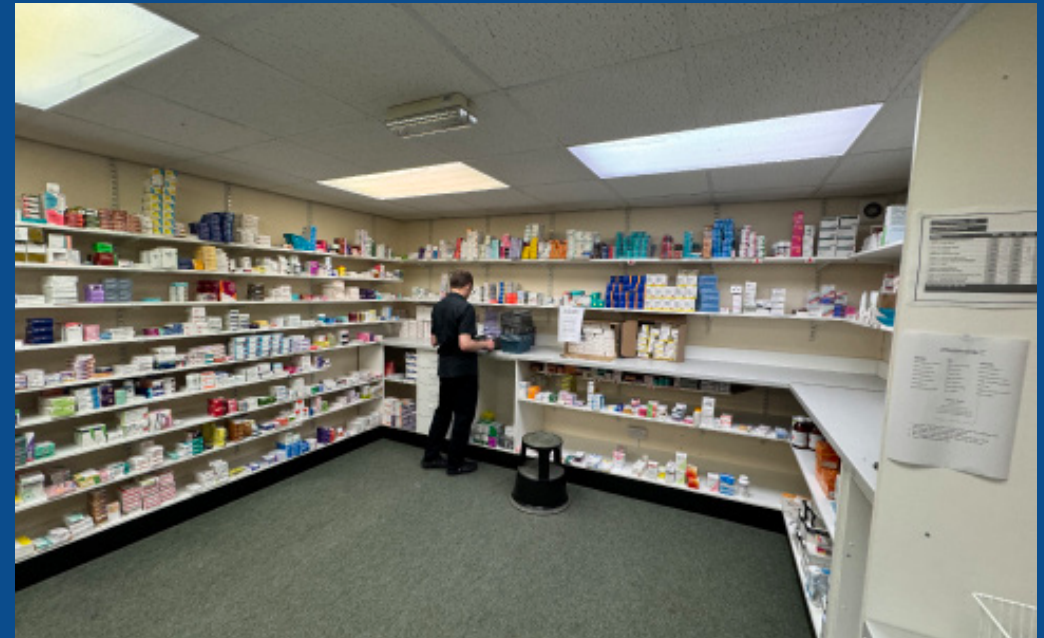
FIND OUT MORE AT [RYDEN.CO.UK](https://www.ryden.co.uk)



# INVESTMENT SUMMARY

- Ground & lower ground floor pharmacy/retail investment
- Let to Express Healthcare Ltd
- Full repairing and insuring lease expiring 27th November 2040
- Passing rent of £15,500 per annum (only £9.11 per sq ft / Zone A rate of £27 per sq ft)
- Subject to 3-yearly upward only rent reviews (next review date is 28th November 2028)
- Express Healthcare Ltd has a Creditsafe International Score of B and a Risk Score of 70 which indicates low risk. The tenant has a Net Worth of £1.77M

**We are seeking offers over £180,000 (exclusive of VAT). A purchase at this level would reflect a Net Initial Yield of 8.45%, assuming purchasers costs of 1.97%.**



## LOCATION

Located in the heart of Stirling's city centre, 12 Barton Street occupies a highly visible, prominent trading position within a busy commercial area. The property benefits from good footfall and passing traffic, situated just a short walk from both the Thistles Shopping Centre and Stirling's primary pedestrianised retail zone.

The location benefits from transport connectivity, with Stirling's main railway and bus stations less than a five-minute walk away, providing direct links to Edinburgh, Glasgow, and the wider Central Belt.

## DESCRIPTION

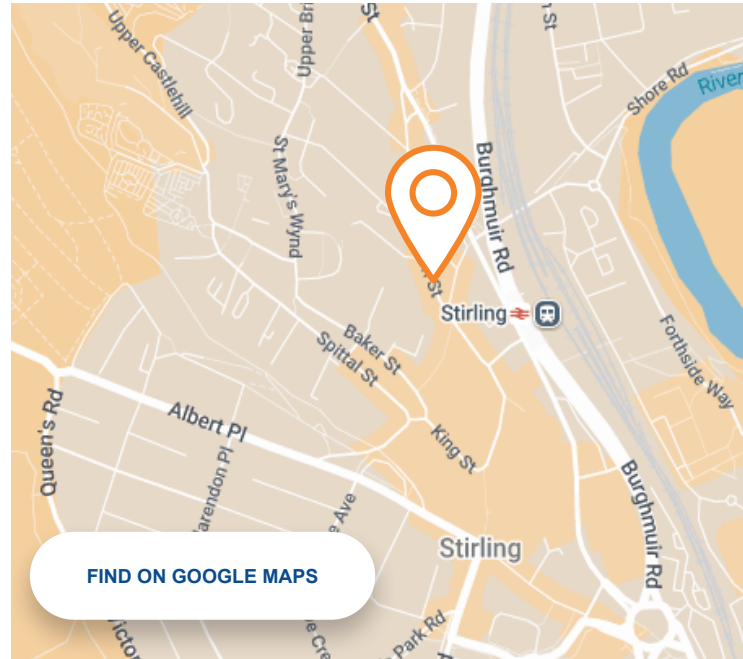
The subjects comprise a prominent ground and lower ground floor retail unit, forming part of a traditional stone built tenement building. The property features a large, highly visible glazed display frontage with a recessed customer entrance, offering excellent signage opportunities to maximise passing trade.

Internally, the accommodation is arranged to provide a bright, open-plan front sales area, which is easily adaptable to a variety of retail or professional service layouts. To the rear, the property includes a consultation room and sales desk, whilst the basement consists of a staff room, dedicated storage and WC facilities.

## ACCOMMODATION

The subjects have the following approximate areas:-

DESCRIPTION	SQ M	SQ FT
GROUND FLOOR	55	596
LOWER GROUND FLOOR	103	1,106
<b>TOTAL</b>	<b>158</b>	<b>1,702</b>





# LEASE SUMMARY

LEASE SUMMARY	
TENANT	Express Healthcare Ltd t/a Capsule Pharmacy
LEASE TERM	<b>Start date:</b> 28th November 1993
	<b>Assigned to current tenant:</b> 6th October 2023*
	<b>End Date:</b> 27th November 2040
ANNUAL RENT	£15,500 per annum
RENT REVIEW	3-yearly intervals, upwards only to the open market rent (next review in November 2028)
LEASE TYPE	Full Repairing & Insuring (No Schedule of Condition)

\*A £20,000 premium was paid for the assignation.

## FURTHER INFORMATION

### TENANT COVENANTS

The property is let to Express Healthcare Ltd (Company Number: SC704539), an established corporate occupier operating within the resilient healthcare sector. Incorporated in 2021, the tenant has built a solid trading track record in Scotland.

The tenant has a Creditsafe Risk Score of 70, representing low risk. Based on their accounts YE 2025, the company has a Tangible Net Worth of £1.77M.

### TENURE

Outright ownership / heritable interest (Scottish equivalent to English freehold).

### VAT

All figures are exclusive of VAT which is payable at the prevailing rate.

### ANTI-MONEY LAUNDERING

To comply with anti-money laundering regulations we are legally required to undertake due diligence on prospective purchasers which will at the minimum include proof of identity/address and funding. Applicable documentation will therefore be required on agreement of Heads of Terms.

### PROPOSAL

Ryden are instructed to seek offers over £180,000 (exclusive of VAT) representing a net initial yield of 8.45% (assuming purchaser's costs of 1.97%).



**capsule** pharmacy



**12 BARNTON  
STREET  
STIRLING  
FK8 1NB**

# GET IN TOUCH

Please get in touch with our letting agent for more details.

## **Kyle Wright**

**T** 07425 478 303

**E** [kyle.wright@ryden.co.uk](mailto:kyle.wright@ryden.co.uk)

## **Nick Armstrong**

**T** 07740 961 592

**E** [nick.armstrong@ryden.co.uk](mailto:nick.armstrong@ryden.co.uk)

## **Ryden**

7 Exchange Crescent  
Conference Square  
Edinburgh  
EH3 8AN  
0131 225 6612

[ryden.co.uk](http://ryden.co.uk)

---

# Ryden

---

© Ryden LLP. Details of Ryden can be viewed on our website [www.ryden.co.uk](http://www.ryden.co.uk). This document is for general informative purposes only. The information in it is believed to be correct, but no express or implied representation or warranties are made by Ryden as to its accuracy or completeness and the opinions in it constitute our judgement as of this date but are subject to change. Reliance should not be placed upon the information, forecast and opinions for any other purpose, and no responsibility or liability, whether in negligence or otherwise, is accepted by Ryden or any of its members, partners, officers, employees, agents or representatives for any loss arising from any use of this document or its contents or otherwise arising in connection with this document. All rights reserved. No part of this document may be transmitted or reproduced in any material form by any means, electronic, recording, mechanical, photocopying or otherwise, or stored in any information storage or retrieval system of any nature, without the prior written permission of the copyright holder, except in accordance with the provision of the Copyright Designs and Patents Act 1988. Warning: the doing of an unauthorised act in relation to a copyright work may result in both a civil claim for damages and criminal prosecution. June 2026

