

Compton

*For Rent*  
**18 Brunswick Place  
Old Street N1**



Fully fitted office space at the Verse Building - high-quality, fully fitted office space, designed for seamless occupation

**For Rent**

**Size**

2,002 - 8,365 Ft<sup>2</sup>

**Rent**

£49.50 - £59.50 per sq ft  
Approx.

**Fitout**

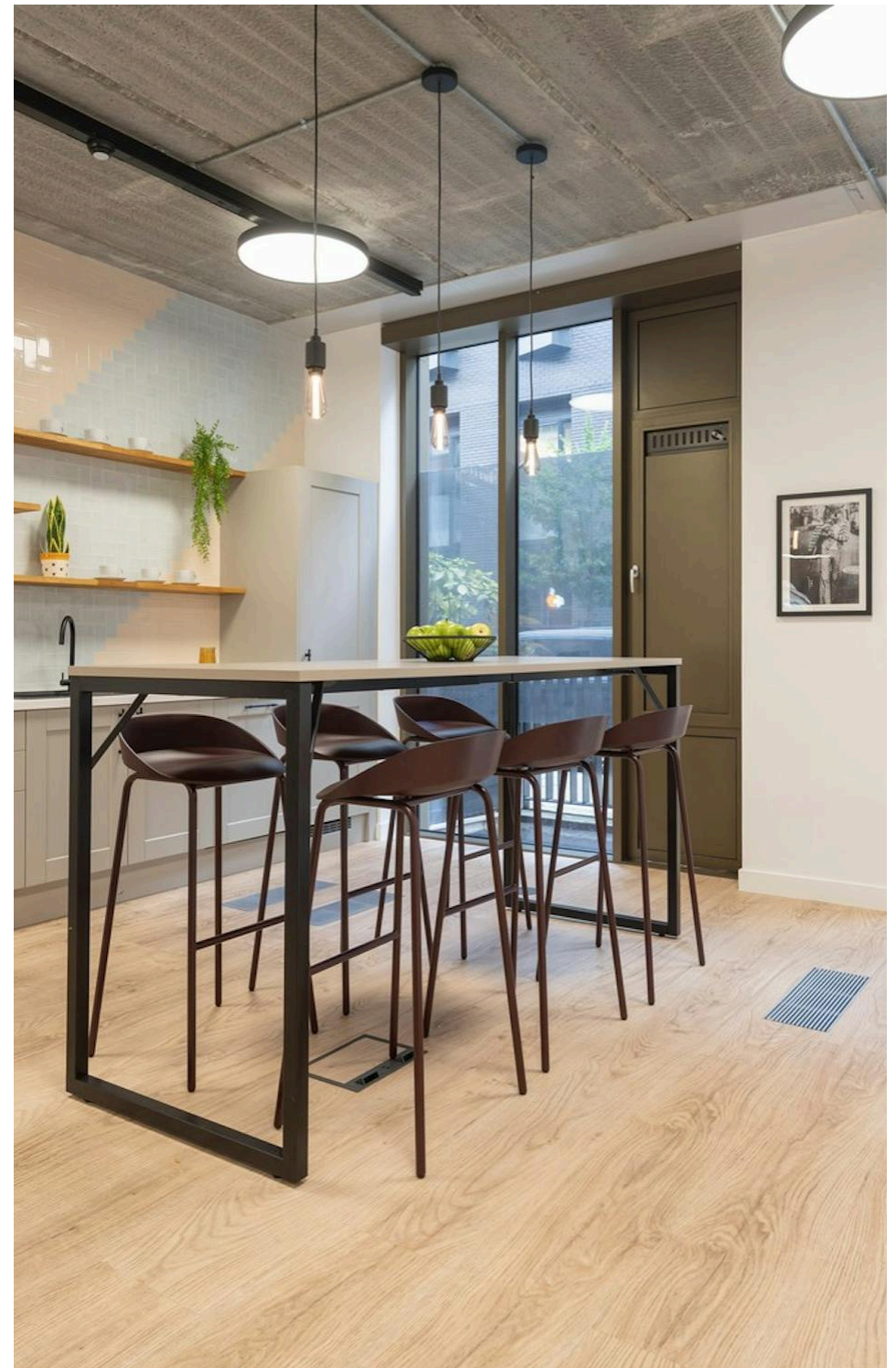
Fitted

**Verse Building**  
18 Brunswick Place  
Old Street N1

**Description**

The Verse Building offers high-quality, fully fitted office space, designed for seamless occupation. Thoughtfully designed with premium furnishings, the workspace includes open-plan desk areas, meeting rooms, booth seating, a welcoming reception area, and a well-equipped kitchen. Built-in storage, dedicated WCs, and phone booths ensure both functionality and convenience.

Sitting alongside its Victorian-period neighbour, the Verse Building provides contemporary office accommodation, offering an ideal environment for creative and tech-driven businesses. Tenants benefit from a manned reception, bike storage, and shower facilities, creating a fully serviced and modern workplace.



**For Rent**

**Size**

2,002 - 8,365 Ft<sup>2</sup>

**Rent**

£49.50 - £59.50 per sq ft  
Approx.

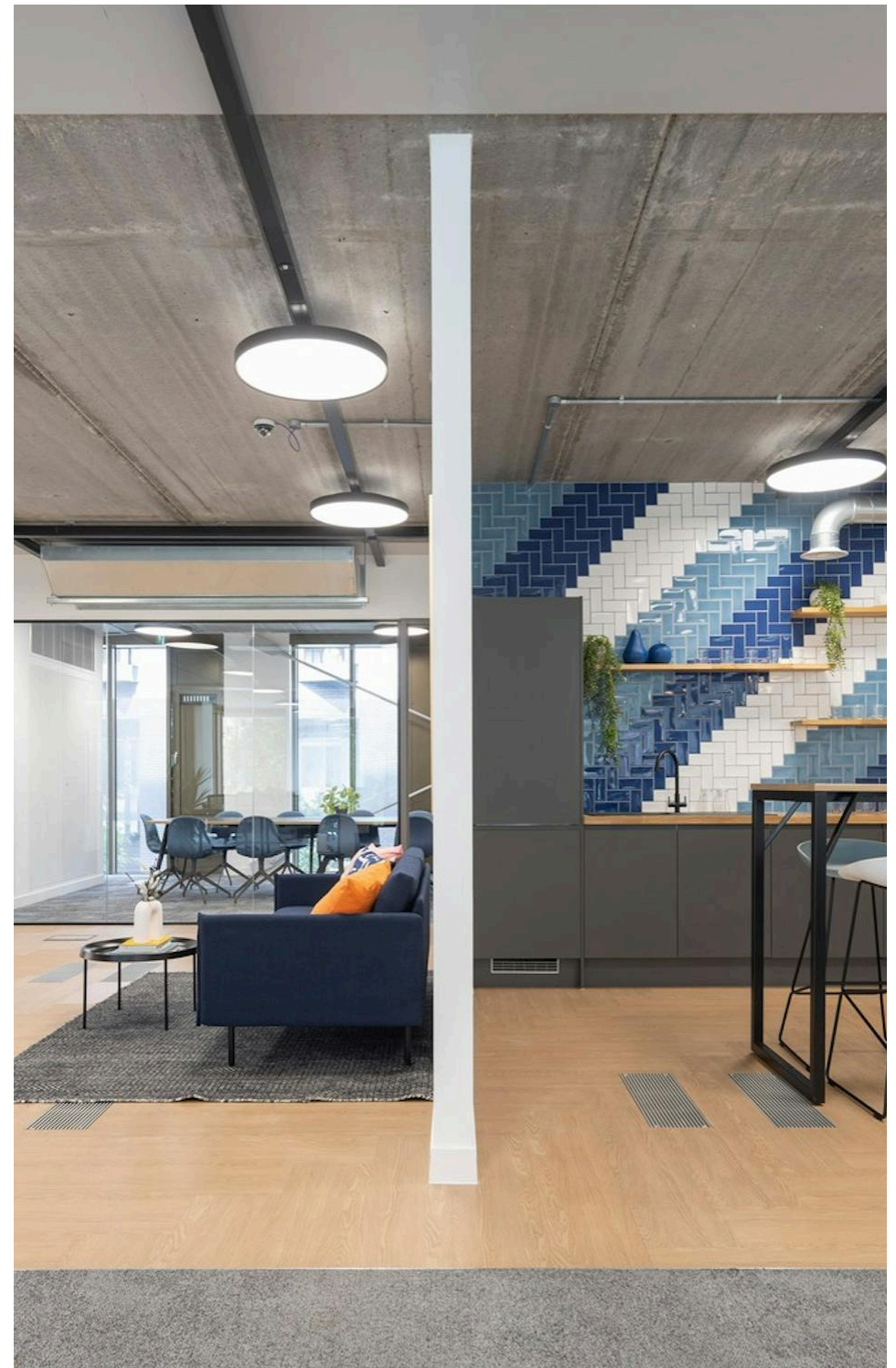
**Fitout**

Fitted

**Verse Building**  
18 Brunswick Place  
Old Street N1

**Description**

A true plug-and-play solution, this is an exceptional opportunity to secure a premium office in one of London's most vibrant and well-connected commercial districts.



For Rent

**Verse Building**  
18 Brunswick Place  
Old Street N1

*Click to Play*



*For Rent*

**Verse Building**  
18 Brunswick Place  
Old Street N1

*Ground Floor - Main Office Space*

**Size**

2,002 - 8,365 Ft<sup>2</sup>

**Rent**

£49.50 - £59.50 per sq ft

Approx.

**Fitout**

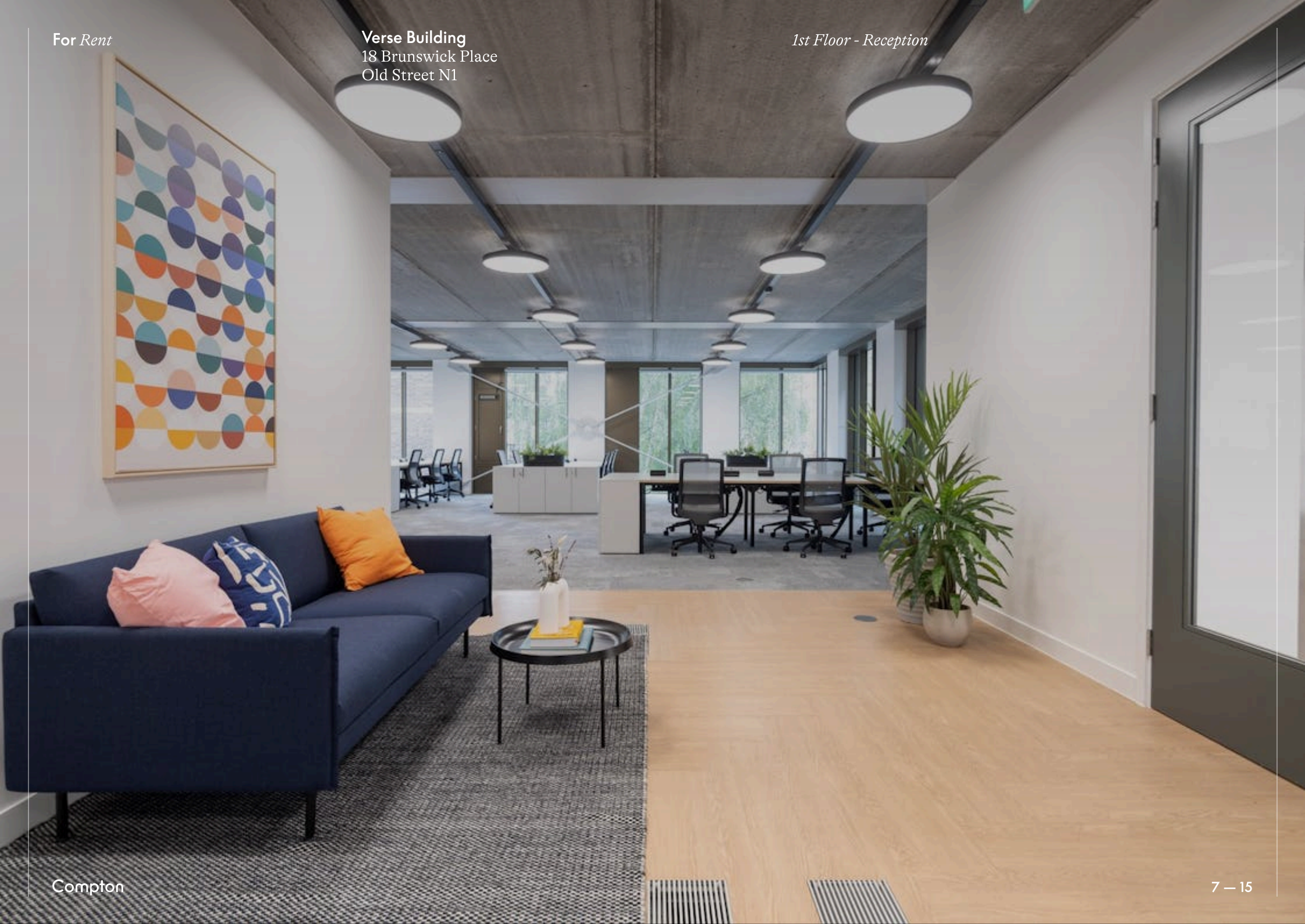
Fitted



For Rent

**Verse Building**  
18 Brunswick Place  
Old Street N1

*1st Floor - Reception*



For Rent

**Verse Building**  
18 Brunswick Place  
Old Street N1

*Ground Floor - Main Office Space*



*Ground Floor - Kitchen*

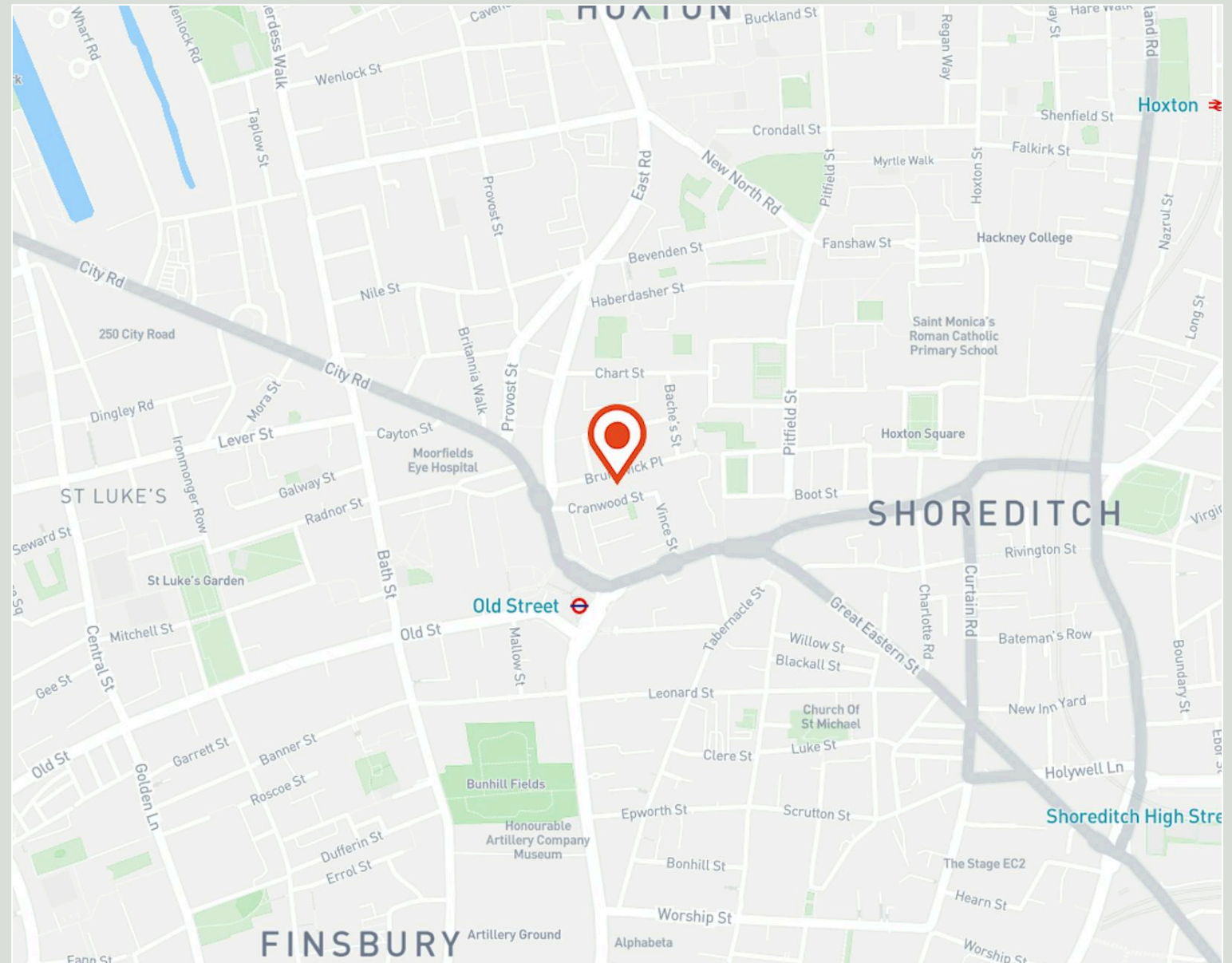
## For Rent

**Verse Building**  
18 Brunswick Place  
Old Street N1

## Location

Verse is situated in a prime location in London's tech and creative hub, positioned between Old Street and Shoreditch. Just a short walk from Old Street Station (Northern Line and National Rail), it offers seamless connectivity to the City, King's Cross, and beyond.

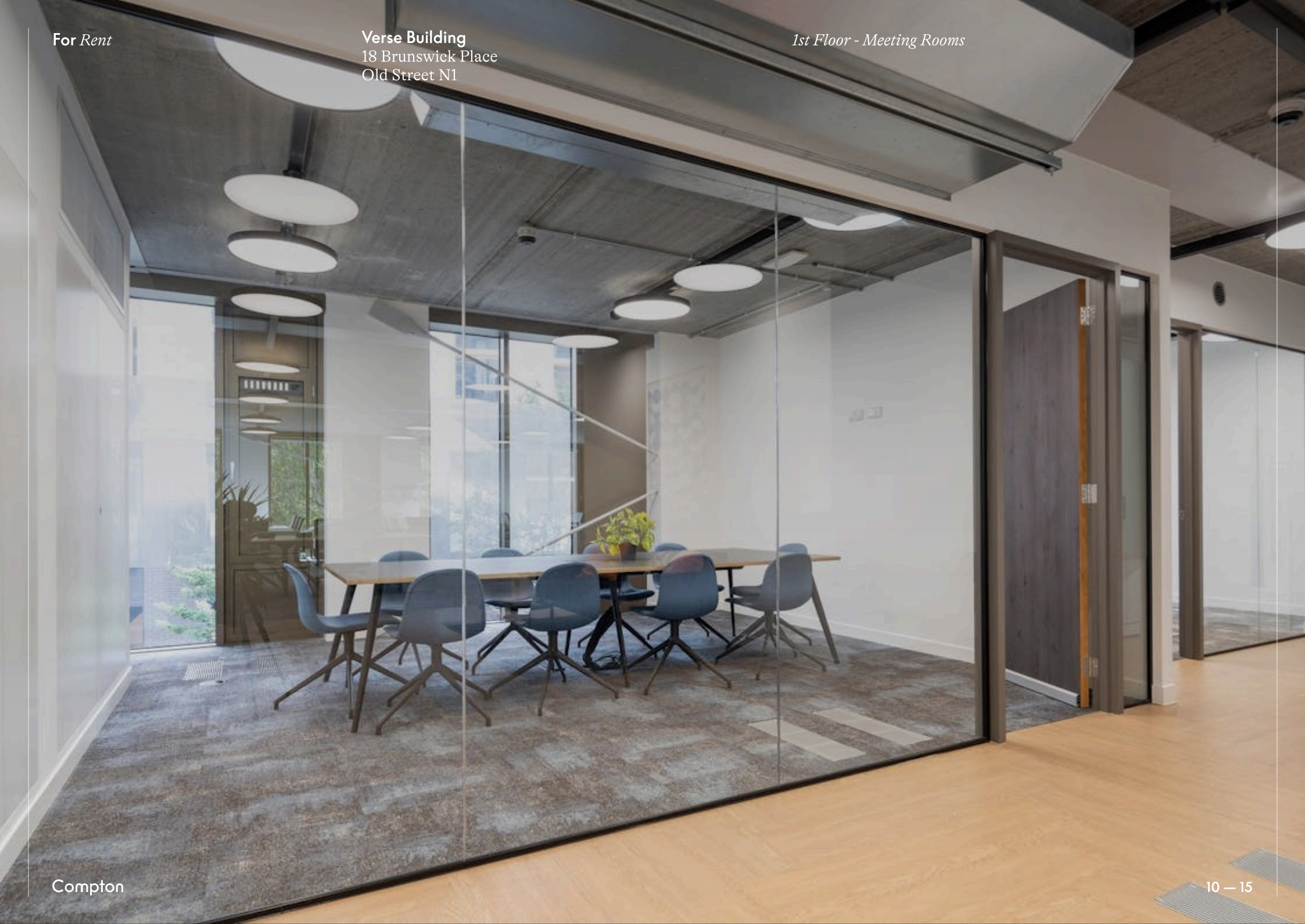
The area is home to a dynamic mix of businesses, from innovative startups to established media, design, and technology firms. With an array of independent cafes, bars, and restaurants nearby, it provides an ideal work environment with excellent local amenities.



For Rent

Verse Building  
18 Brunswick Place  
Old Street N1

1st Floor - Meeting Rooms



Compton

*For Rent*

**Verse Building**  
18 Brunswick Place  
Old Street N1

**Amenities**

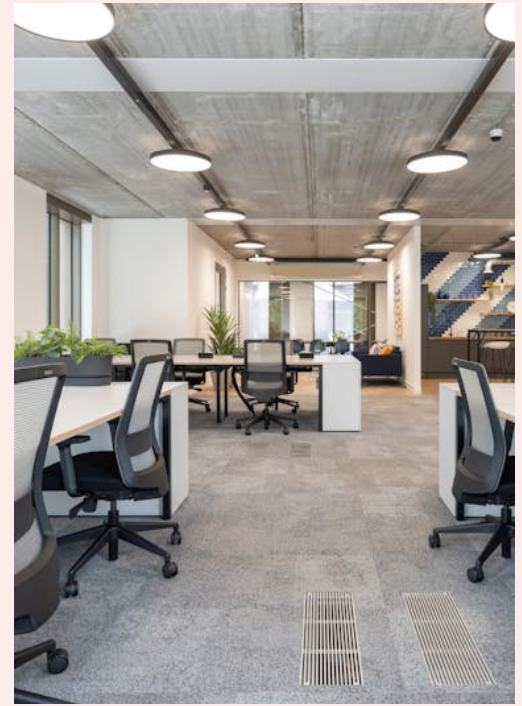
- Fully fitted office space
- Workstations (1200mm) x30
- 10P Meeting Room x1
- 6P Meeting Room x1
- Informal Meeting Room x1
- Kitchen x1
- Collaborative Work Settings
- On site commissionaire
- Communal bike storage & shower facilities
- Demised WCs
- Air conditioning



For Rent

**Verse Building**  
18 Brunswick Place  
Old Street N1

*1st Floor - Main Office Space*



*1st Floor - Reception*

For Rent

**Verse Building**  
18 Brunswick Place  
Old Street N1

*Availability*

<b>Name</b>	<b>Sq Ft</b>	<b>Rent (Sq Ft)</b>	<b>Rates Payable (Sq Ft)</b>	<b>Service Charge (Sq Ft)</b>	<b>Total /Sq Ft</b>	<b>Total Month</b>	<b>Total Year</b>	<b>Availability</b>
7th - Fully Fitted	2,121	£59.50	£22.04	£14.88	£96.42	£17,042.24	£204,506.82	Available
6th	2,121	£52.50	£22.04	£14.88	£89.42	£15,804.99	£189,659.82	Available
4th - Fully Fitted	2,121	£55	£22.04	£14.88	£91.92	£16,246.86	£194,962.32	Available
Ground - Fully Fitted	2,002	£49.50	£22.04	£14.88	£86.42	£14,417.74	£173,012.84	Available
<b>Total</b>	<b>8,365</b>	<b>£54.13</b>	<b>£22.04</b>	<b>£14.88</b>	<b>£91.05</b>	<b>£63,511.83</b>	<b>£762,141.80</b>	

## For Rent

**Verse Building**  
18 Brunswick Place  
Old Street N1

### Fit Out - What's included?

Workstations (1200mm) x30 10P  
Meeting Room x1 6P Meeting Room  
x1 Kitchen / Tea Point x1 Booth  
Seating x1 Phone Booth x1  
Reception / Welcome Area x1  
Lockers / Built In Storage Demised  
WCs x2

### Landlord

Private

### Tenure

New Lease

### Availability

Available Immediately

### Compton Concierge

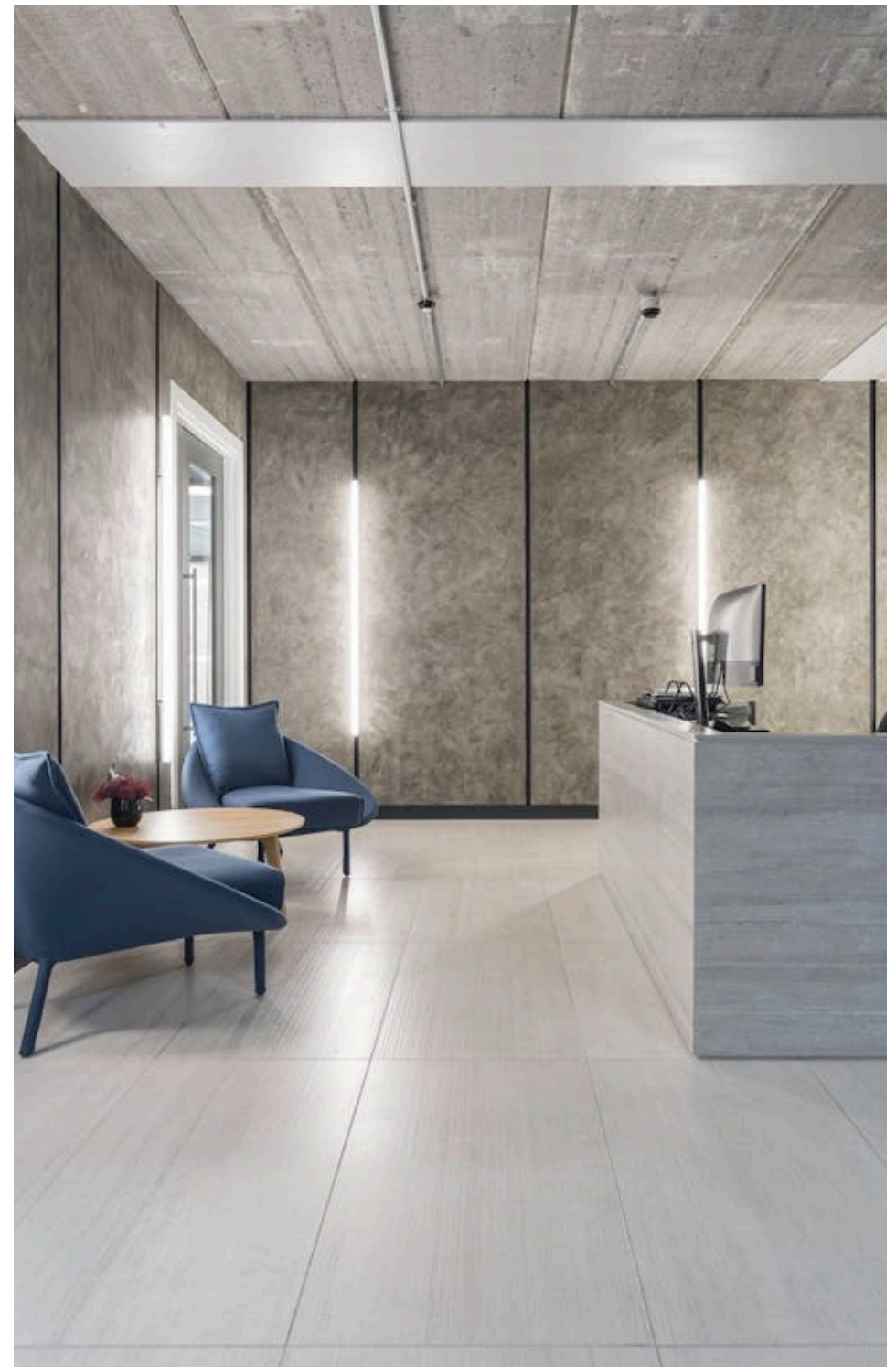
Want your workspace *managed*?

Find out more

[compton.london/concierge](https://compton.london/concierge)

### Content

Watch the Film  
(click button)



Contact Us

compton.london

020 7101 2020

enquiries@compton.london

All appointments to view must be arranged via sole agents, Compton, through:



**Jake Kinsler**

jk@compton.london

0207 101 2020 | 07928049777



**Sonia Oberoi**

so@compton.london

020 7101 2020 | 07483 882 598



**Sarah Hill**

sh@compton.london

0207 101 2020 | 07936 338 774