

One Olympia



Benefits of Partnering With Us



Global market leader
in workspace
and work
infrastructure
transformation



35 years' experience in
supporting our
customers' workspace
needs



**Present in
5,000 locations**
1,200 cities
130 countries



15,000 team members
ready to support your
business and your
people 24/7



Carbon neutral
and working towards a
sustainable future



Supporting businesses
from solo entrepreneurs to
87% of the Fortune 500

Everything is Included



Facilities

Business lounges and breakout areas
Access to kitchens and utilities
High tech meeting rooms



IT & Security

Ultra-fast internet
Super-quick, constant Wi-Fi access
Reliable IT infrastructure



Professional Support

Dedicated community team
Administrative support
Access to printing and scanning



Productive Workspace

Workstyle choices
Ergonomic furniture
High quality design
Design your office



Facility Management

Cleaning
Maintenance
Health & Safety guidelines



Global Community

Access to global network of business lounges
Global Networking
Wide choice of events



Flexibility

Free relocation
Flexible term
24/7 access



Account Management

Dedicated account self-service portal
24/7 helpdesk
IT Support

One Olympia Opening 30th Nov 2026



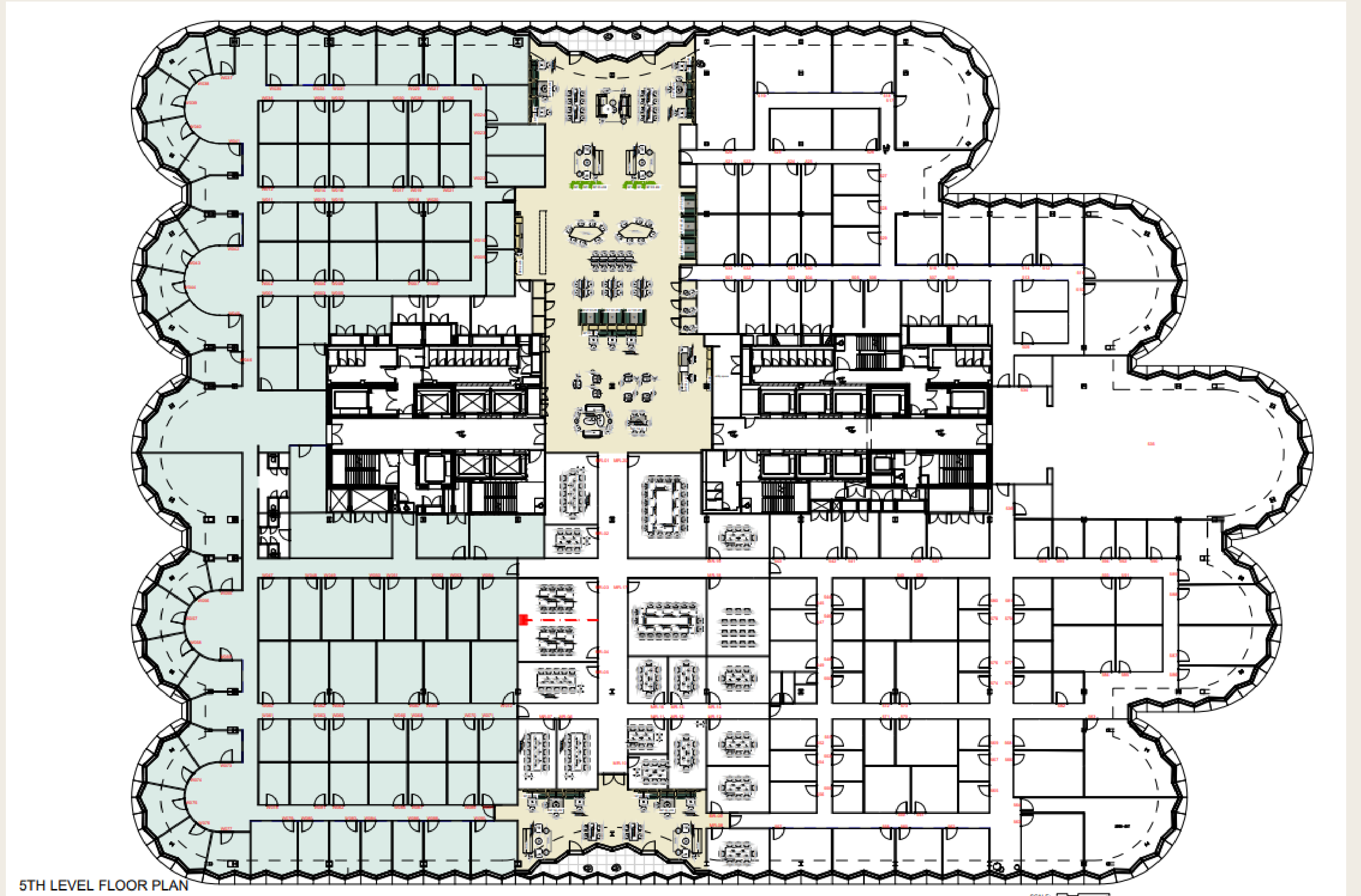
One Olympia

One Olympia will be IWG's global flagship, introducing a new expression of luxury workspace to London. Defined by light, space and beautifully crafted design, it will offer an atmosphere that feels calm, modern and quietly confident. Private offices flow into curated lounges and generous communal areas, all shaped with the ease and elegance of a high end hotel. With sweeping views across West London and hospitality woven into every detail, One Olympia will deliver a workspace that feels elevated from the moment you arrive, a destination created to inspire, to impress and to bring out your best work.

**Floor 5, One Olympia Hammersmith
Road London W14 8UX**



One Olympia 5th Floor - 77,000sqft



Thank you

**frost
meadowcroft**
020 8748 1200

Shaun Wolfe

swolfe@frostmeadowcroft.com

+44 7900 911 135

Simon Kibble

skibble@frostmeadowcroft.com

+44 7774 646 393