

RETFORD HOSPITAL OFFICES

Retford Hospital, North Road,
Retford, DN22 7XF

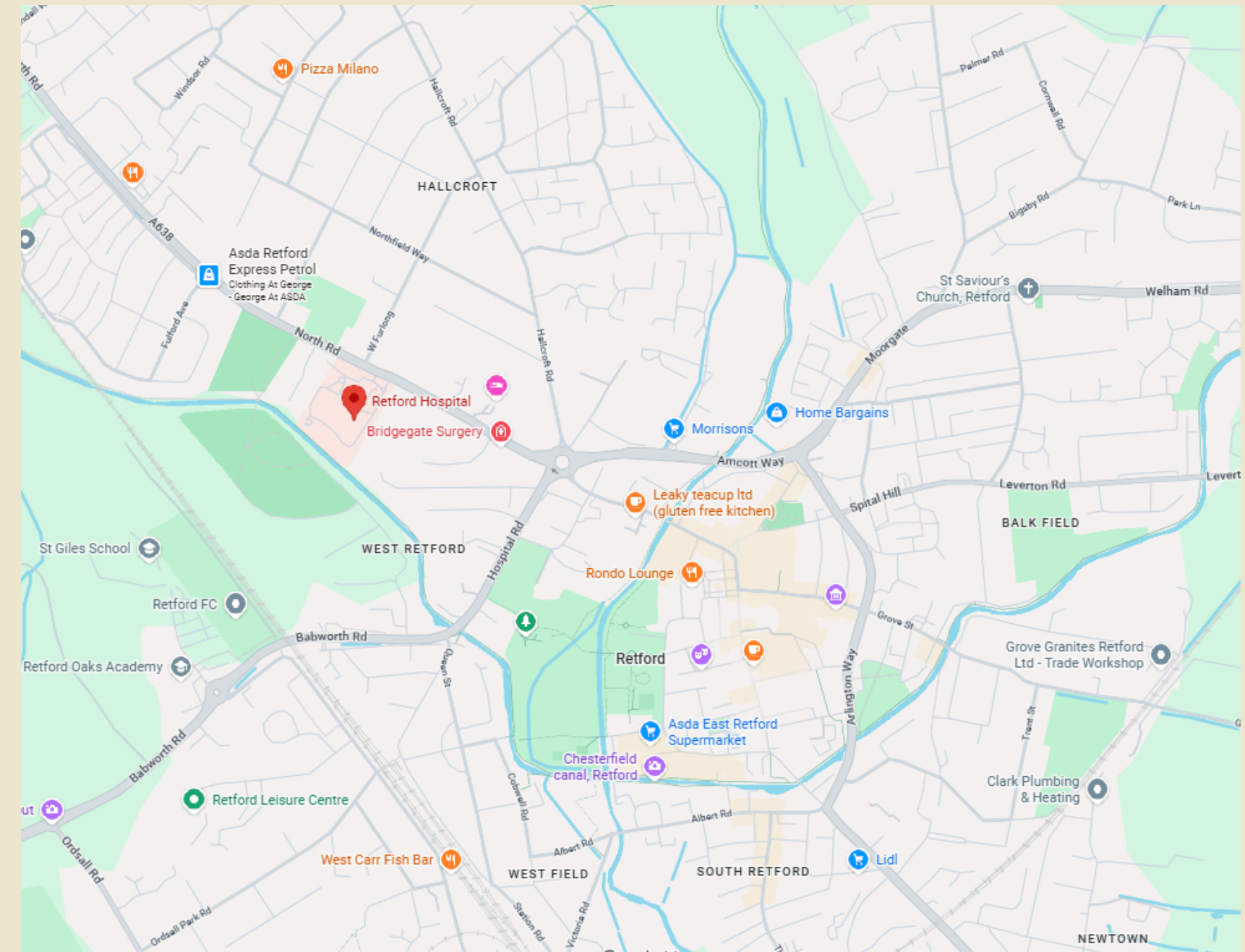
TO LET



YOUR PROPERTY PARTNER OF CHOICE

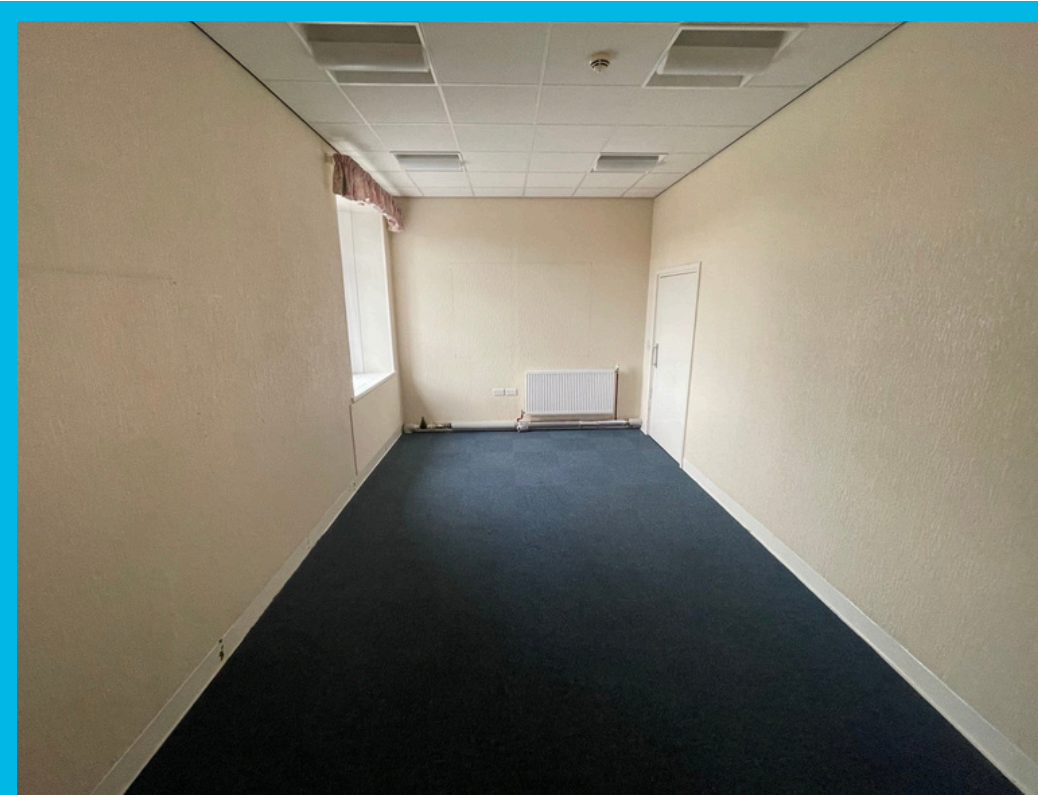
Office accommodation available in a desirable central Retford location

- Office accommodation split over two floors
- Suitable for medical, clinical, office or professional uses
- Secure coded access
- Onsite car parking
- Strong connectivity Via A638 and A620 with links to the A1(M)
- Located in a recognised medical and professional setting
- Excellent motorway access
- <https://w3w.co/putty.cattle.pill>



TO LET

Use Class (E)



PROPERTY OVERVIEW

DESCRIPTION

A first and second-floor office accommodation is available to let on a floor by floor basis or its entirety at Retford Hospital, offering flexible office or clinical services. The building benefits from a secure coded access and on-site parking is available for staff and visitors. The property presents a well-located opportunity for office, professional or medical occupiers, available immediately.

LOCATION

Retford Hospital is located on North Road, a short distance from Retford town centre, providing easy access to local amenities and services. Retford benefits from excellent transport connectivity, with the A638 and A620 linking directly to the wider road and network and the A1(M). Retford railway station provides mainline services as well as regular regional connections to Doncaster, Lincoln and Sheffield.

SUMMARY

Available Size	NRA 393.40 sq.m./ NIA 102.36 - 330.76 sq. m.
Rent	POA
Business Rates	Upon Enquiry
Service Charge	Upon Enquiry Excluding Business Rates
Car Parking	Car Parking Available
EPC Rating	C

ACCOMMODATION

The accommodation comprises the following areas

Name	NRA (sq.m)	NIA (Sq.m)	Availability
First Floor		228.40	Available
Second Floor		102.36	Available
Total	393.40	330.73	





RETFORD HOSPITAL OFFICES

Viewing & Further Information



Daniel Clinch
07947 990224
daniel.clinch@alignpropertypartners.co.uk



Julie Anderson
07968 799 734
julie.anderson@alignpropertypartners.co.uk

View Properties [Here](#)



